

NUMBER: 23-025-14

GROUP: Body

DATE: September 24, 2014

This bulletin is supplied as technical information only and is not an authorization for repair. No part of this publication may be reproduced, stored in a retrieval system, or transmitted, in any form or by any means, electronic, mechanical, photocopying, or otherwise, without written permission of Chrysler Group LLC.

THIS SERVICE BULLETIN IS ALSO BEING RELEASED AS RAPID RESPONSE TRANSMITTAL (RRT) 14-079. ALL APPLICABLE SOLD AND UN-SOLD RRT VIN's HAVE BEEN LOADED. TO VERIFY THAT THIS RRT SERVICE ACTION IS APPLICABLE TO THE VEHICLE, USE VIP OR PERFORM A VIN SEARCH IN TECHCONNECT. ALL REPAIRS ARE REIMBURSABLE WITHIN THE PROVISIONS OF WARRANTY.

SUBJECT:

Instrument Panel 500 Nameplate Not Fully Seated

OVERVIEW:

This bulletin involves replacing the "500" nameplate on the instrument panel.

MODELS:

2014 (FF) 500/500e

NOTE: This bulletin applies to vehicles built on or after May 12, 2014 (MDH 0512XX) and on or before May 26, 2014 (MDH 0526XX).

SYMPTOM/CONDITION:

The customer may describe a gap between the "500" nameplate and the instrument panel bezel.

DIAGNOSIS:

If a customer's VIN is listed in VIP or your RRT VIN list, perform the repair. For all other customers that describe the symptom/condition, perform the Repair Procedure.

PARTS REQUIRED:

Qty.	Part No.	Description
4	68073305AA	Push Nut
1 (AR)	1RX98SZ0AA	Name Plate - 500
1 (AR)	1TS48SZ0AA	Name Plate - 500c (Cabrio)
1 (AR)	1VT13SZ0AB	Name Plate - 500e (Electric)

REPAIR PROCEDURE:

1. Remove the instrument panel bezel (1) (Fig. 1). Refer to the detailed service procedures available in DealerCONNECT> TechCONNECT under: Service Info> 23 - Body> Instrument Panel> BEZEL, Instrument Panel, Center> Removal.

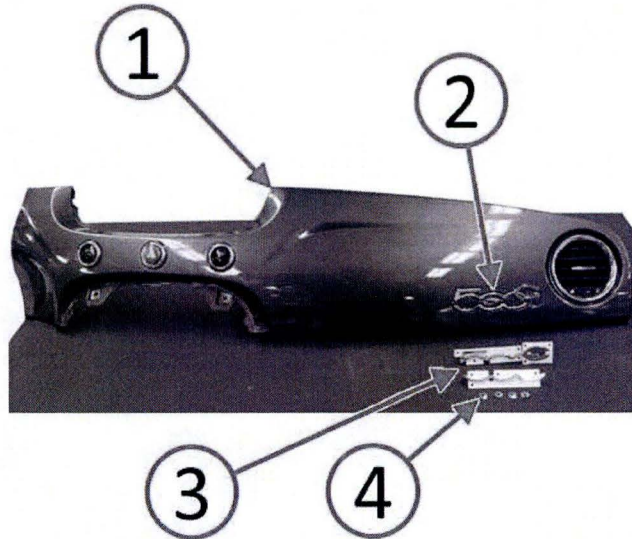


Fig. 1 Remove Instrument Panel Bezel

- 1 - Instrument Panel Bezel
- 2 - "500" Name Plate
- 3 - New - "500" Name Plate
- 4 - New - Push Nuts

NOTE: The old "500" name plate will be removed and discarded. Breaking off the fastener studs is permitted.

2. From the back side of the instrument panel bezel, remove the "500" name plate fastener studs (1) in order to release the name plate from the bezel (Fig. 2).

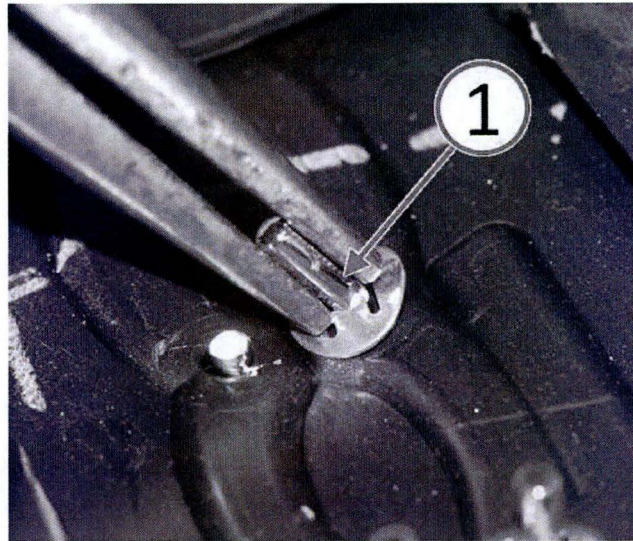


Fig. 2 Remove Name Plate Fasteners

1 - "500" Name Plate Fastener Studs

3. Being very careful to not scratch the instrument panel bezel, use a trim stick or equivalent (1) to remove the "500" nameplate from the instrument panel bezel (Fig. 3).

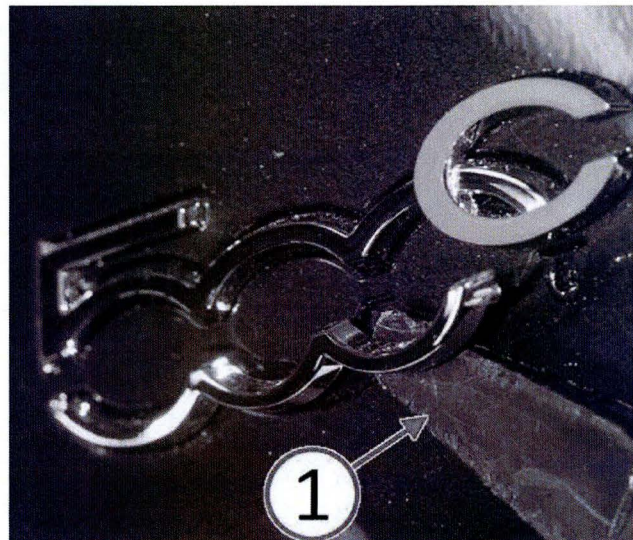


Fig. 3 Remove Name Plate From Bezel

1 - Trim Stick

- Using a clean cloth (2) dampened with isopropyl alcohol or general purpose adhesive cleaner safe for painted surfaces, clean any adhesive residue (1) from the instrument panel bezel (Fig. 4).

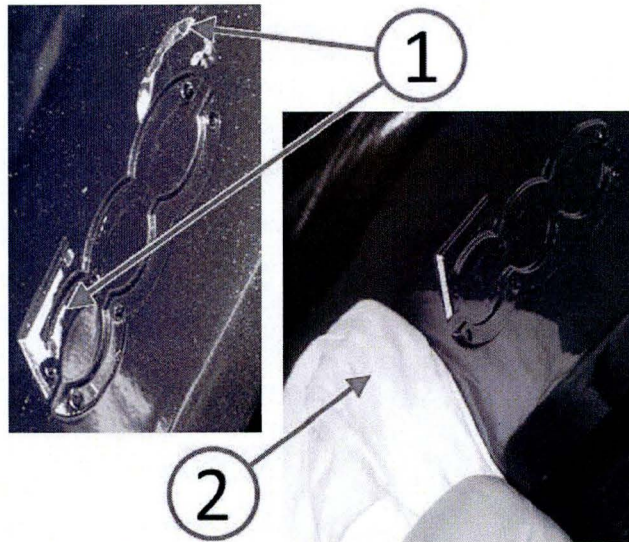


Fig. 4 Remove Remaining Adhesive

1 - Adhesive Residue

2 - Clean Cloth

CAUTION: Do not remove the long fastener studs from the name plate. Only remove the single short locator studs.

- Being very careful to not damage the new "500" name plate, use a file or equivalent tool to remove the single short name plate locator stud (1) from each half of the new "500" name plate (Fig. 5).

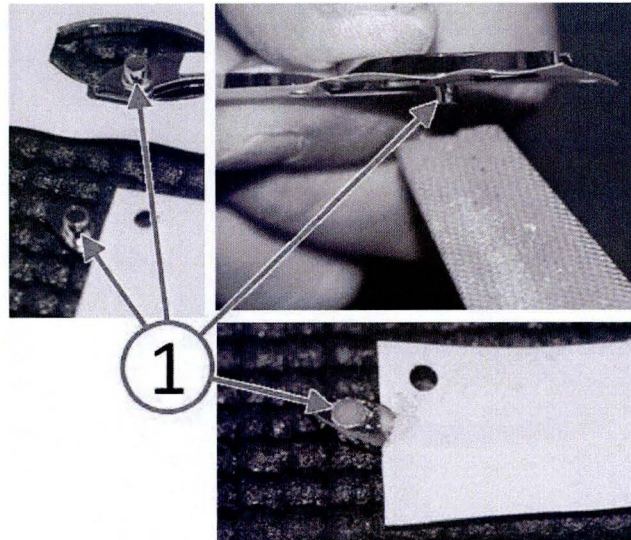


Fig. 5 Remove Short Locator Studs

1 - Name Plate Short Locator Stud

-
6. Remove the white adhesive liner from the new "500" name plate prior to installation.
 7. Carefully align and install the new "500" name plate (1) to the instrument panel bezel name plate depression (2) (Fig. 6).

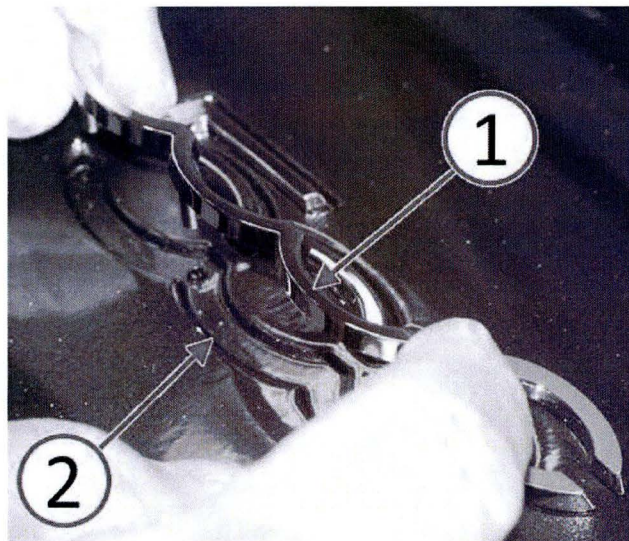


Fig. 6 Align And Install New Name Plate

1 - Name Plate

2 - Bezel Name Plate Depression

8. Inspect to ensure the new "500" nameplate (1) is perfectly aligned with the depression (2) in the instrument panel bezel (Fig. 7).



Fig. 7 Inspect Name Plate Alignment

- 1 - Name Plate
 - 2 - Bezel Name Plate Depression
-

9. Secure the new "500" name plate to the instrument panel bezel with the four push nuts (2) (Fig. 8).

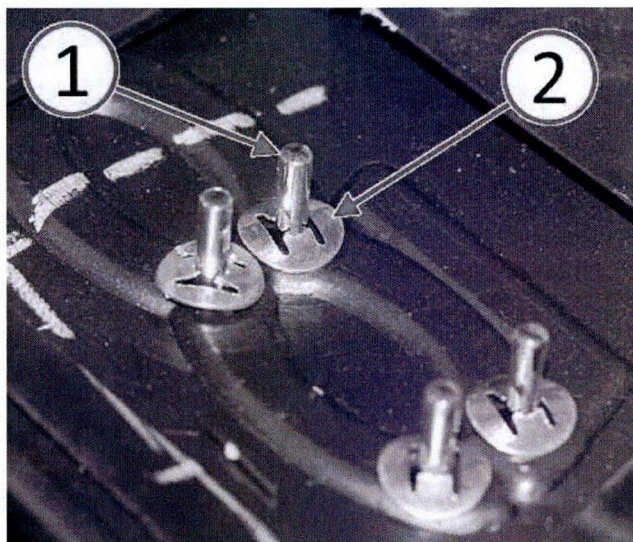


Fig. 8 Install Name Plate Fasteners

- 1 - Name Plate Fastener Studs
- 2 - Push Nuts

10. Install the instrument panel bezel. Refer to the detailed service procedures available in DealerCONNECT> TechCONNECT under: Service Info> 23 - Body> Instrument Panel> BEZEL, Instrument Panel, Center> Installation.

POLICY:

Reimbursable within the provisions of the warranty.

TIME ALLOWANCE:

Labor Operation No:	Description	Skill Category	Amount
23-03-08-94	Replace The Instrument Panel Bezel "500" Name Plate. (0 - Unskilled)	6 - Electrical and Body Systems	0.4 Hrs.
23-03-08-95	Replace The Instrument Panel Bezel "500" Name Plate. Equipped with Sales Code (E99) Electric Motor. (3 - Highly Skilled)	6 - Electrical and Body Systems	1.0 Hrs.

FAILURE CODE:

ZZ	Service Action
----	----------------