 Connection offline

Field campaign

Topic	Flying Spur - Potential mismatch - Keys to entry and start authorisation control unit control J518 (SC14/12)
Market area	Worldwide Bentley (1WBE)
Brand	Bentley
Transaction No.	2037366/1
Campaign number	EA12
Note	
Type	
US code	

Vehicle data

Flying Spur

Sales types

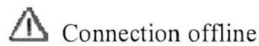
Type	MY	Brand	Designation	Engine code	Gearbox code	Final drive code
4W2*	2014	E		*	*	*

Chassis numbers

Manufacturer	Filler	Type	Filler	MY	Factory	From	To	Prod from	Prod to
SCB	*	3W	*	E	*	090307	096997		
SCB	*	ZA	*	E	*	090307	096997		
SCB	EA5	3W	8	E	C	000272	000272		

Documents

Document name
master.xml



Connection offline

EA12

Transaction No.: 2037366/1

Flying Spur - Potential mismatch - Keys to entry and start authorisation control unit control J518 (SC14/12)

Notes



Repair instructions

Technical background

Vehicle keys can be supplied in two Generation types, they are as follows:

Generation 1

Generation 2

It has been identified that a number of cars may have a mismatch between the Generation of keys and the Generation of the entry and start authorisation control unit -J518-

Carry out the instructions to clarify the key Generation matches the Generation of the entry and start authorisation control unit -J518-

Generation 1 keys should be paired with a Generation 1 control unit -J518-

Generation 2 keys should be paired with a Generation 2 control unit -J518-

Should a mismatch be detected for example:

Generation 2 key with a Generation 1 control unit -J518- (or reverse) instructions are detailed within this procedure to match the two components.

Remedy

This campaign must be carried out on all applicable vehicles within the specific VIN range to ensure all affected vehicles are checked and repaired as detailed within the onward instructions.

Customer notification

Customers do not need to be informed directly of this campaign. Please ensure that all affected vehicles are checked and repaired during a service visit. You should also inform your new and used car sales departments so that the vehicles affected can be checked and, if necessary, repaired immediately.

Whilst carrying out this campaign please check for any outstanding workshop actions, please ensure that all relevant VIN related workshop actions are conducted during the same workshop visit.

Warranty accounting instructions

IMPORTANT: *Normal warranty policies apply. Please use the applicable code depending on work conducted*

Time to conduct section 1 – Vehicle key Generation check

Warranty Type	710 or 790
Labour operation code	96 66 01 99 (for RO open date on or before 31 July 2014) 96 66 01 00 (for RO open date after 31 July 2014)
Damage Service Number	EA12
Damage code	00 66
Time	20 time units
Criteria ID	01

Time to conduct sections 1 and 2 – Vehicle key Generation check and J518 Generation change

Warranty Type 710 or 790
 Labour operation code 96 66 25 99 (for RO open date on or before 31 July 2014)
 96 66 25 00 (for RO open date after 31 July 2014)

Damage Service Number EA12
 Damage code 00 66
 Time 30 time units
 Criteria ID 01

Genuine parts

Not applicable

Parts supply

Not applicable

Parts despatch control

Not applicable

Questions and answers

Question: Does the customer need to supply all vehicle keys including valet keys?

Answer: Yes, please ask the customer to supply all applicable vehicle keys including valet keys

Repair instructions

 Notes

Technical background

Vehicle keys can be supplied in two Generation types, they are as follows:

Generation 1

Generation 2

It has been identified that a number of cars may have a mismatch between the Generation of keys and the Generation of the entry and start authorisation control unit -J518-

Carry out the instructions to clarify the key Generation matches the Generation of the entry and start authorisation control unit -J518-

Generation 1 keys should be paired with a Generation 1 control unit -J518-

Generation 2 keys should be paired with a Generation 2 control unit -J518-

Should a mismatch be detected for example:

Generation 2 key with a Generation 1 control unit -J518- (or reverse) instructions are detailed within this procedure to match the two components.

Check

If the vehicle is not already listed as repaired in the "Repair history" (in Elsa Pro), check for the campaign identification mark which is a yellow paint spot on the right hand boot trim panel bracket located in front of the starter battery (Figure 7) if the paint marks are not visible please carry out the required work in accordance with

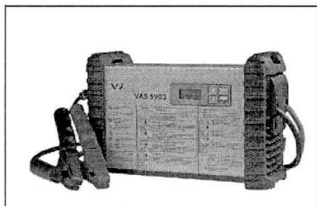
these instructions.

Genuine parts

Not applicable

Tools

Flat bladed screwdriver with a tip width and thickness of 4mm x 0.5mm must be used to open the integrated key fob body.



VAS 5903 – or a charger with the same specification must be used

Work

Section 1 - Vehicle key Generation clarification

1. Remove the ignition key fob battery cover – Refer to workshop manual Rep.Gr 57 - Integrated key battery - To replace



When removing and refitting the rear of the key fob take care to not damage the key fob, only use a flat bladed screwdriver with a tip width and thickness of 4mm x 0.5mm

2. With the key fob back removed check the part number of the key, the part number is located as shown in Figure 1

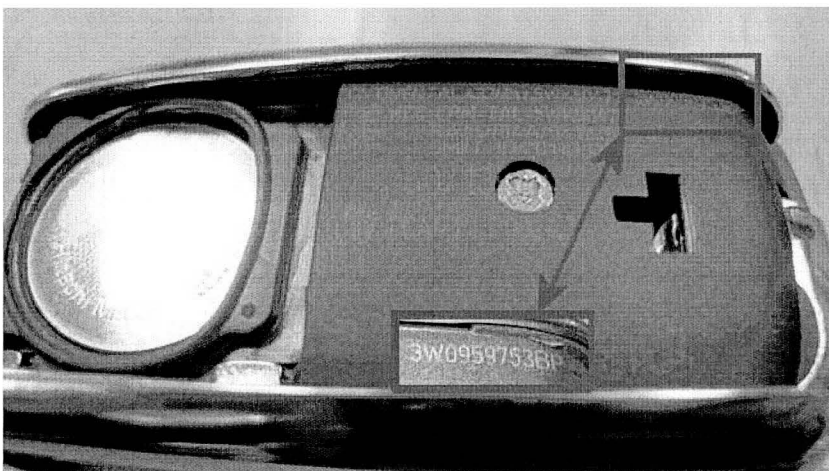


Figure 1

The part number is formatted as 3W0 959 753XX

The suffix (XX) identifies the generation of the key as follows:

Generation type	Suffix (XX)
1	AB - AD - AF - AH - AK - AM - AP - AR - AT - BB - BD - BF - BG - BH - BJ - BK - BL - BM - BN

	- T
2	BP - BQ - BR - BS - BT - CA

3. Repeat procedure 2 on all remaining keys including valet keys (if applicable)



All vehicle keys including the valet key should be of the same Generation, in the event that not all of the keys are of the same Generation, please raise a DISS ticket

NOTE: Once the suffix and the Generation of all keys is clarified follow the onward instructions to confirm the Generation of control unit -J518- matches the key

4. Ensure a suitable battery charger (VAS 5903 – or a charger with the same specification) is correctly connected to the vehicle electrical system for the duration of this procedure – Refer to workshop manual Rep.Gr 27 – Batteries to charge

- Switch on ignition, the ignition should not be switched on by using the start/stop switch in the centre console, Always insert the key into the ignition barrel to switch on the ignition

- Connect the Bentley diagnostic tool VAS 5052A or later approved equipment, to the vehicle On Board Diagnostic (OBD) socket

- From the Desktop launch the Offboard Diagnostic Information System Service by using the Diagstarter icon



CAUTION: Before commencing ensure that the correct product version of Offboard Diagnostic Information System Service is installed, the Diagnostic data level should also be checked and confirmed

- Referring to Figure 2, from the Offboard Diagnostic Information System Service home screen select Information (Point A)

- Select Versions (Point B) the Version information screen will now open

- At Point C, check the Offboard Diagnostic Information System Service product version which must be 2.1.1 or higher

- At Point D, check the Diagnostic data level which must be 2.5.0 or higher

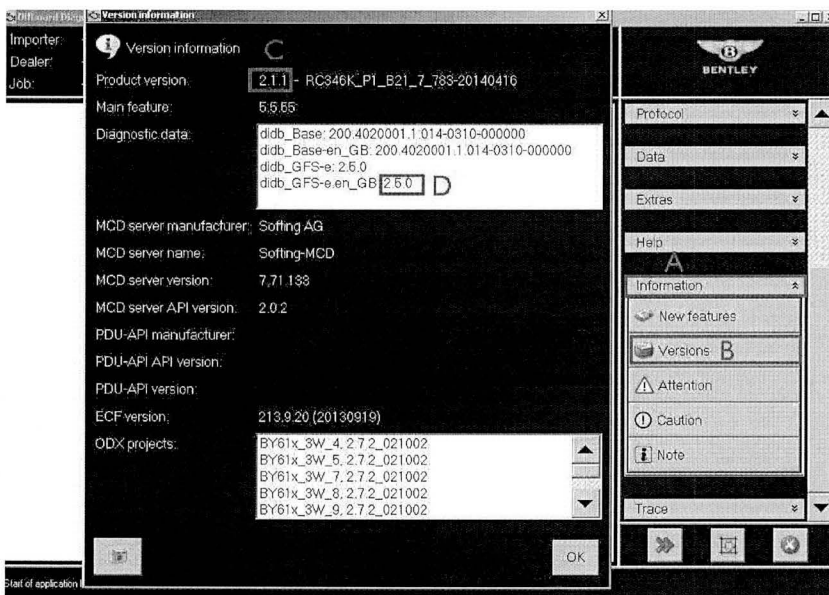


Figure 2

In the event that one or both versions do not meet the afore mentioned criteria please update your Offboard Diagnostic Information System Service to the appropriate level.

5. From the Offboard Diagnostic Information System Service home screen

- Select – Start diagnosis

- Select – Model/Engine

6. Deselect Guided Fault Finding – remove tick from *Using guided fault finding* option – then select *Yes* at pop-up and *Apply* (Figure 3)

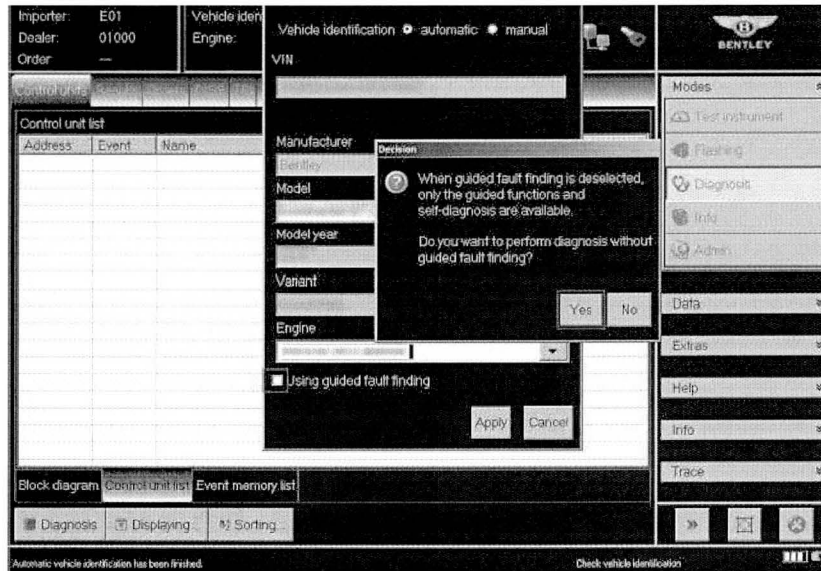


Figure 3

- Referring to Figure 4 select – Special functions

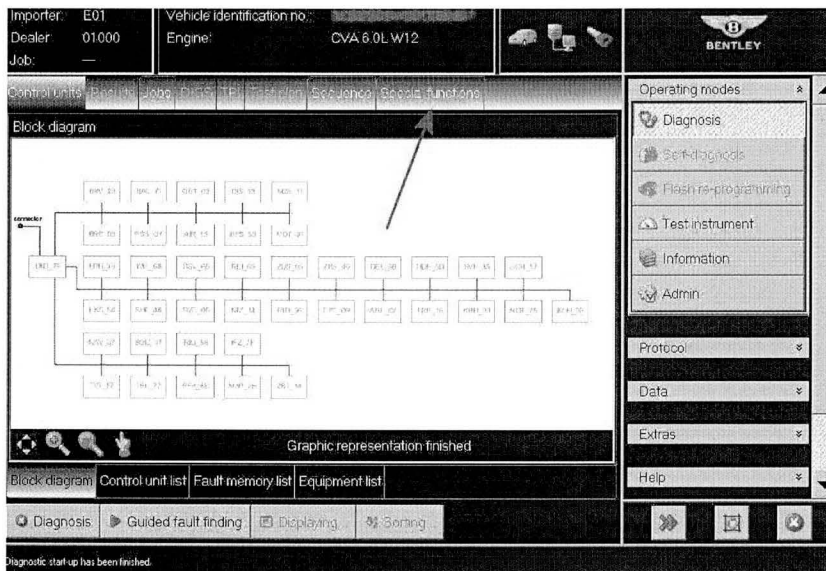


Figure 4

- Select Vehicle key, read/write parameters (Figure 5 Point A)

- Select Perform test (Figure 5 Point B) and follow all on screen prompts until you reach the screen shown in Figure 6

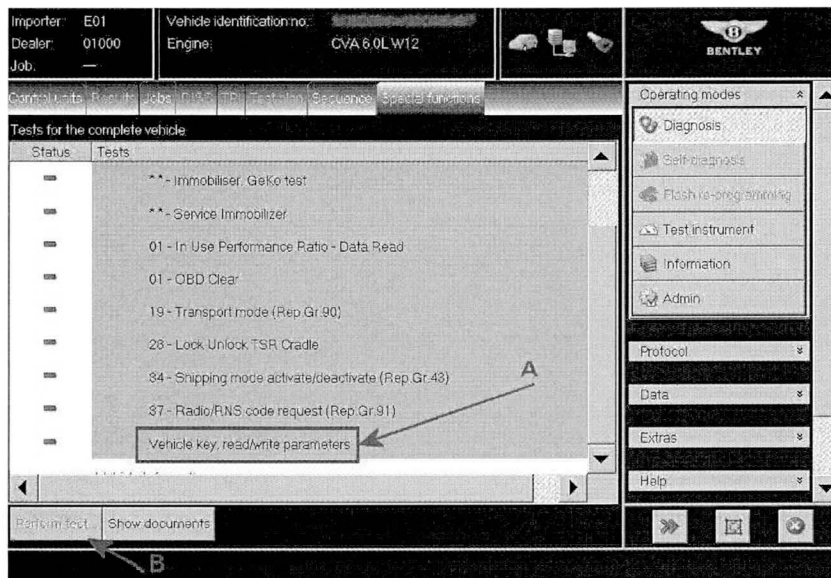


Figure 5

- Figure 6 confirms the Generation of the Entry and start authorisation control unit -J518 -

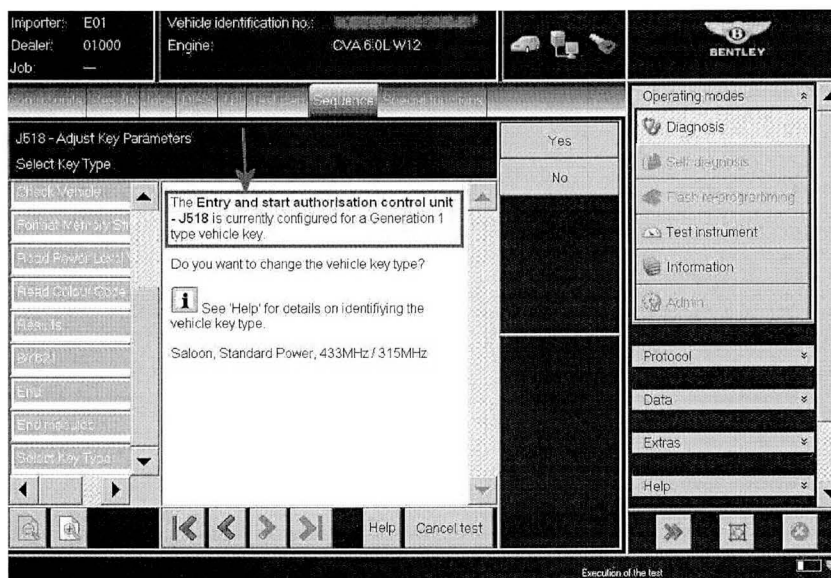


Figure 6

IMPORTANT: Should the Generation of the key match the entry and start authorisation control unit -J518- no further action is required, should a mismatch be evident please go to Section 2 to change the Generation configuration within control unit -J518-

7. If no mismatch is evident, place a yellow paint completion mark on the right hand boot trim panel bracket located in front of the starter battery (Figure 7)

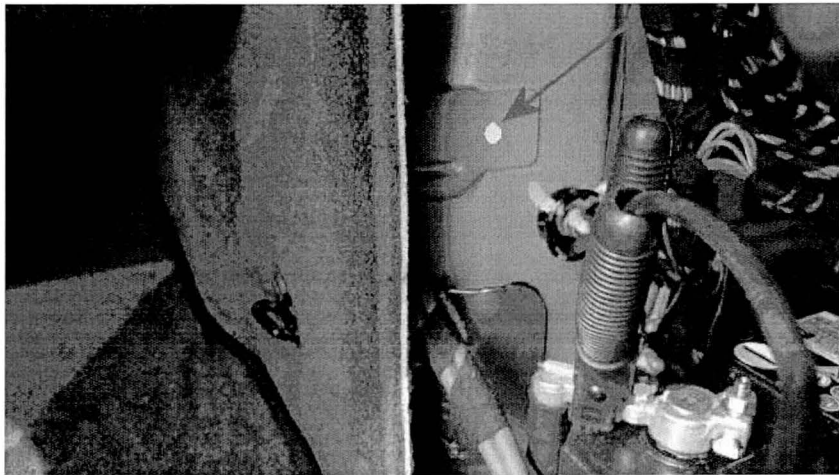


Figure 7

Section 2 Control unit –J518- Generation change

1. Referring to Figure 8, select **Yes** and follow all on screen prompts



- Ensure you are connected to your on – line network – Broadband. Use a hardwire connection for software updates Bluetooth connections are not advised.

- When requested, enter your GEKO user ID and follow all on screen prompts until the Generation of the control unit -J518- matches the Generation of the key

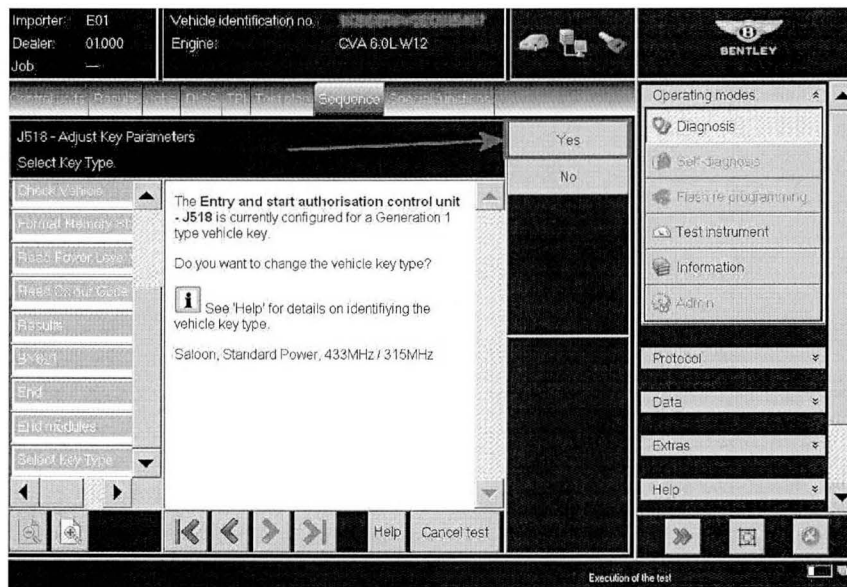


Figure 8

2. Place a yellow paint completion mark on the right hand boot trim panel bracket located in front of the starter battery (as shown in Figure 7)

Identification

Yellow paint completion mark on the right hand boot trim panel bracket located in front of the starter battery (Figure 7)

 Repair instructions  Notes