

Connection offline

## Field campaign

|                        |  |
|------------------------|--|
| <b>Topic</b>           | Battery monitor control unit – software update (SC13/21) |
| <b>Market area</b>     | Worldwide Bentley (1WBE)                                 |
| <b>Brand</b>           | Bentley  |
| <b>Transaction No.</b> | 2035952/3  |
| <b>Campaign number</b> | E798   |
| <b>Note</b>            |  |
| <b>Type</b>            | Workshop Campaign  |
| <b>US code</b>         |  |

## Vehicle data

### Continental range and Spur 12MY onwards

#### Sales types

| Type  | MY   | Brand | Designation | Engine code | Gearbox code | Final drive code |
|-------|------|-------|-------------|-------------|--------------|------------------|
| 3931* | 2012 | E     |             | *           | *            | *                |
| 3931* | 2013 | E     |             | *           | *            | *                |
| 3931* | 2014 | E     |             | *           | *            | *                |
| 3932* | 2012 | E     |             | *           | *            | *                |
| 3932* | 2013 | E     |             | *           | *            | *                |
| 3932* | 2014 | E     |             | *           | *            | *                |
| 3941* | 2012 | E     |             | *           | *            | *                |
| 3941* | 2013 | E     |             | *           | *            | *                |
| 3942* | 2012 | E     |             | *           | *            | *                |
| 3942* | 2013 | E     |             | *           | *            | *                |
| 3942* | 2014 | E     |             | *           | *            | *                |
| 3W2*  | 2012 | E     |             | *           | *            | *                |
| 3W2*  | 2013 | E     |             | *           | *            | *                |
| 3W7*  | 2012 | E     |             | *           | *            | *                |
| 3W7*  | 2013 | E     |             | *           | *            | *                |
| 3W7*  | 2014 | E     |             | *           | *            | *                |
| 3W8*  | 2012 | E     |             | *           | *            | *                |
| 4W21* | 2014 | E     |             | *           | *            | *                |

#### Chassis numbers

| Manufacturer | Filler | Type | Filler | MY | Factory | From   | To     | Prod from | Prod to |
|--------------|--------|------|--------|----|---------|--------|--------|-----------|---------|
| SCB          | ***    | **   | *      | *  | *       | 000001 | 090231 |           |         |

#### Control units

| Diagnostic address | Software part number | Software version | Hardware part number | Hardware version |
|--------------------|----------------------|------------------|----------------------|------------------|
|                    |                      |                  |                      |                  |

|                         |               |      |               |     |
|-------------------------|---------------|------|---------------|-----|
| 71 - Battery<br>Charger | 3W3.915.181.A | 0540 | 3W3.915.181.A | H04 |
|-------------------------|---------------|------|---------------|-----|

## Documents

| Document name |
|---------------|
| master.xml    |



Connection offline

Workshop Campaign E798

Transaction No.: 2035952/3

Battery monitor control unit – software update (SC13/21)

## Notes



Repair instructions

### Technical background

The threshold for a voltage monitor diagnostic within the battery monitor control unit (J367) has been found to be too sensitive. If this diagnostic is triggered powertrain CAN activity is restricted resulting in reduced functionality of the park brake release switch

### Remedy

Revised software has been developed and introduced from VIN SCBEA5ZAXEC090231. This software can be loaded into the control unit by using the attached Software Version Management (SVM) code via the SVM system

### Customer notification

Customers do not need to be informed directly of this campaign. Please ensure that all affected vehicles are checked and repaired during a service visit. You should also inform your new and used car sales department so that the vehicles affected can be checked and, if necessary, repaired immediately (and not just before sale)



Before Carrying out this Campaign check to clarify if the battery control module with the part number of 3W3 915 181B has been previously fitted (Refer to Check section), should the vehicle have had the part fitted this Campaign is not applicable, please refer to the Warranty accounting instruction section of this procedure for labour claim instructions to allow the campaign applicability to be removed for the applicable VIN

### Warranty accounting instructions

#### For first generation Continental family, ie Supersports, Speed and Continental Flying Spur derivatives

Warranty Type 710 or 790

Labour Operation Code 01 29 00 43

Damage Service Number E798

Damage Code 00 66

Criteria ID 01

Time 50 TU

#### For New Continental family and Flying Spur

Warranty Type 710 or 790

Labour Operation Code 01 29 00 05

Damage Service Number E798

Damage Code 00 66

Criteria ID 01  
Time 50 TU

**Time to be claimed to remove the campaign from the system should 3W3 915 181B be fitted**

Warranty Type 710 or 790  
Labour operation code 01 29 00 01  
Damage Service Number E798  
Damage Code 00 66  
Criteria ID 01  
Time 10 TU

### Genuine parts



Before Carrying out this Campaign check to clarify if a battery monitor control unit with the part number of 3W3 915 181B has been previously fitted (Refer to Check section), should the vehicle have had the part fitted this Campaign is not applicable, please refer to the Warranty accounting instruction section of this procedure for labour claim instructions to allow the campaign applicability to be removed for the applicable VIN

### Parts supply

N/A

### Parts despatch control

N/A

## Repair instructions



Notes

### Technical background

The threshold for a voltage monitor diagnostic within the battery monitor control unit (J367) has been found to be too sensitive. If this diagnostic is triggered powertrain CAN activity is restricted resulting in reduced functionality of the park brake release switch

### Check

If the vehicle is not already listed as repaired in the 'Repair History' (ElsaPro), check the vehicle for the campaign identification mark, (see Figure 10), if this is not visible carry out the required work in accordance with these instructions

### Genuine parts



Before Carrying out this Campaign check to clarify if a battery monitor control unit with the part number of 3W3 915 181B has been previously fitted (Refer to Check section), should the vehicle have had the part fitted this Campaign is not applicable, please refer to the Warranty accounting instruction section of this


procedure for labour claim instructions to allow the campaign applicability to be removed for the applicable VIN

## Tools



VAS 5903 – or a charger with the same specification must be used

## Work

1. Ensure a suitable battery charger (VAS 5903 – or a charger with the same specification) is correctly connected to the vehicle electrical system for the duration of this procedure – Refer to workshop manual Rep.Gr 27 – Batteries to charge
2. Switch on ignition **IMPORTANT:** When performing software updates the ignition must never be switched on by using the start/stop switch in the centre console, Always insert the key into the ignition barrel to switch on the ignition
3. Connect the Bentley diagnostic tool VAS 5052A or later approved equipment, to the vehicle On Board Diagnostic (OBD) socket
4. Ensure you are connected to your on – line network – Broadband. Use a hardwire connection for software updates Bluetooth connections are not advised.
5. From the VAS diagnostic tool main desktop select Offboard Diagnostic Information System 



9. Select *Special functions* (1), Select *SVM – Problem related Hardware/Software Update* (2), Select *Perform test* (3) (see Figure 2)



Figure 3

10. At SVM process screen reference the table below and enter the specific SVM code for the vehicle being worked and then *Apply* (2)

| Vehicle type  | SVM code to be used |
|---|---------------------|
| Flying Spur   | 4W071UPDATE01       |
| New Continental family  | 39071UPDATE01       |
| Series one Continental family i.e. Supersports, Speed and Continental Flying Spur derivatives | 3W071UPDATE01       |

11. Check you have entered the correct SVM code and select *Yes*

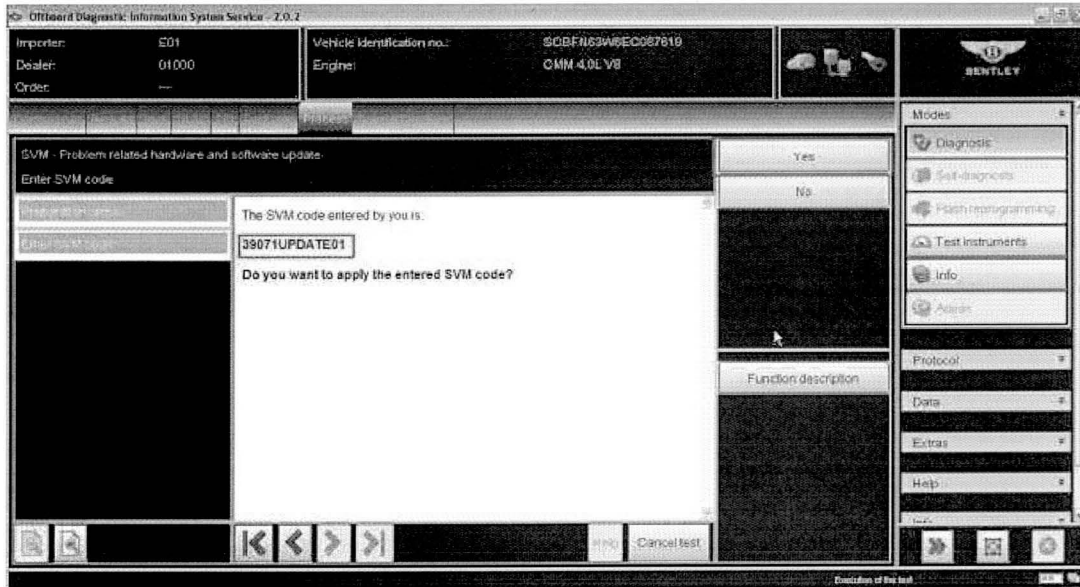


Figure 4

- 12. Ensure adequate vehicle battery voltage is maintained. If prompted enter your global user ID and password
- 13. Follow the on screen prompts to continue through the procedure

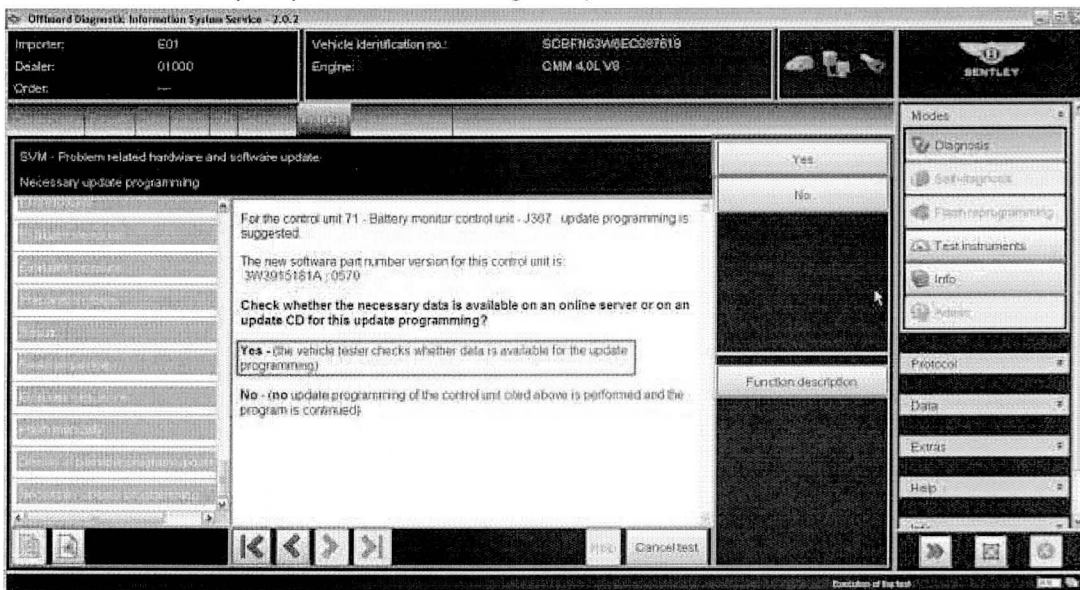


Figure 5

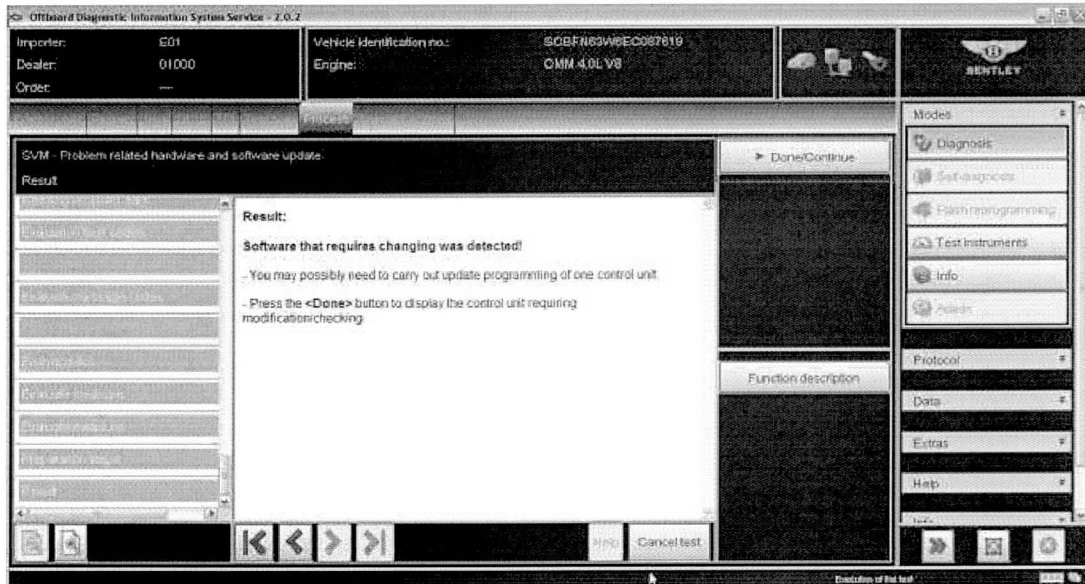


Figure 6

14. Once software is detected select *Done/Continue*

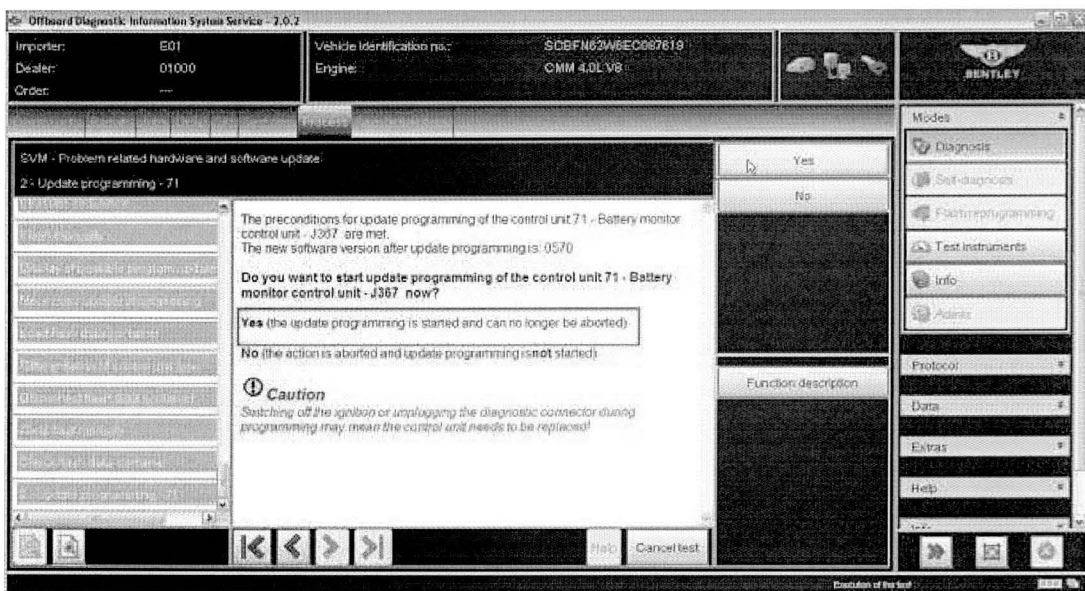


Figure 7

15. Select *Yes* to update Battery monitor control unit, a progress bar will be displayed during the update

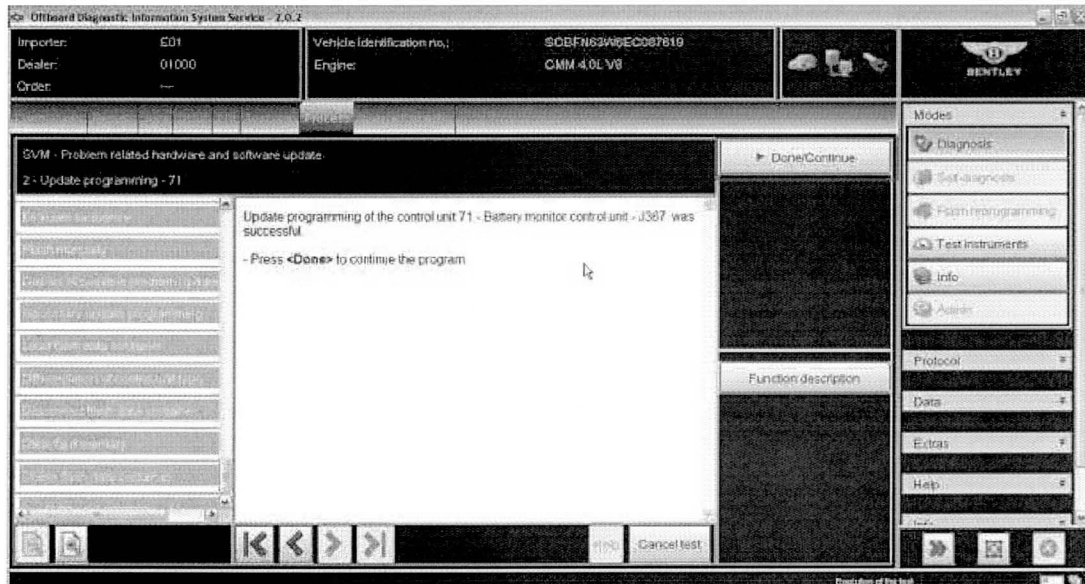


Figure 8

16. Once Done/Continue is selected at the successful programming screen then you are prompted to perform an ignition off/on cycle, to do this: FIRST press Done/Continue then at prompt turn ignition OFF, press Done/Continue then at prompt turn ignition ON
17. When statement *Calibration required changing was detected!* is displayed press Done/Continue and follow on screen prompts to enable the calibration program to run to end and then *Exit* diagnostics
18. Use *Guided Fault Finding* in Offboard Diagnostic Information System to carry out a complete diagnostic sweep of the vehicle, clearing any fault codes generated as a result of performing this campaign. NOTE: Due to the fault codes induced as a result of this software update the vehicle ignition status will not be visible to the VAS tester during this initial guided fault finding control module sweep therefore click continue at ignitions status prompts.

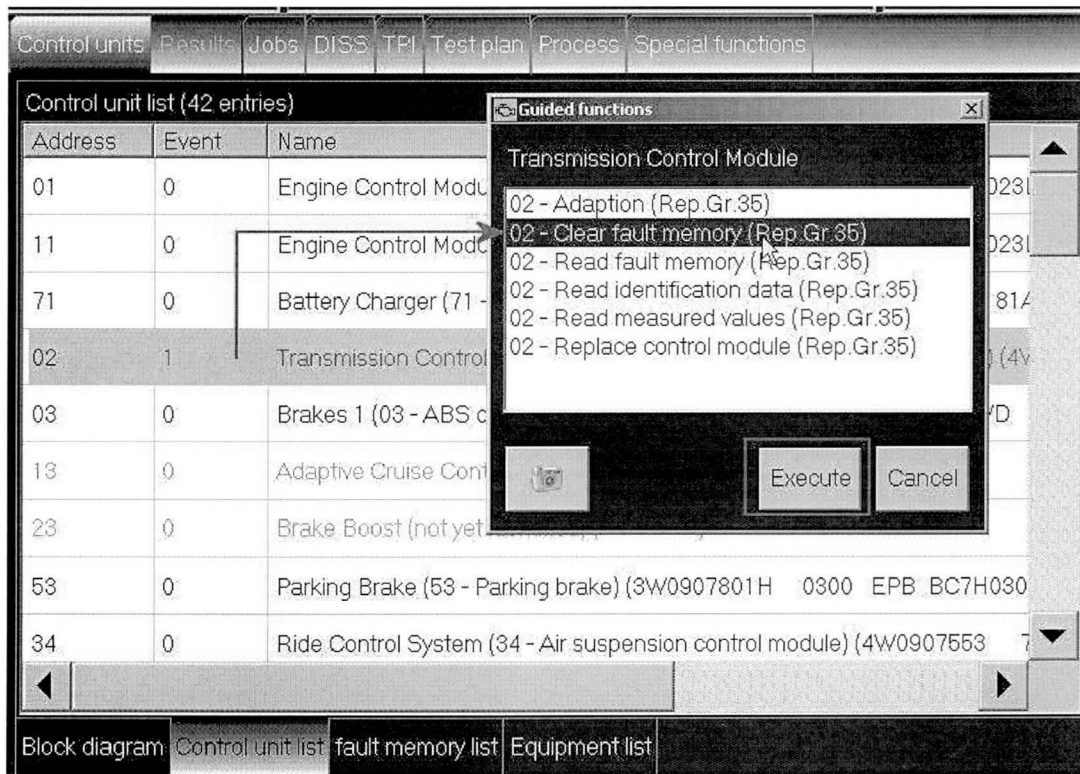


Figure 9

19. NOTE 2: It is possible that an engine or transmission fault code may require guided fault finding to be used directly in that specific control module to clear the fault code (see Figure 9)
20. On completion apply a blue campaign completion mark (see Figure 10)

### Identification

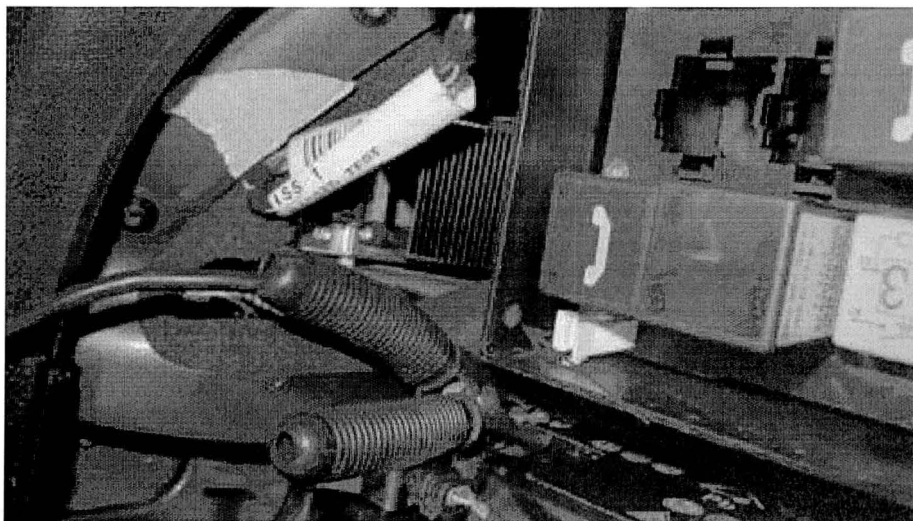


Figure 10

On completion apply a blue campaign completion mark to the boot mounted fuse box adjacent to the main system battery negative post (see Figure 10)

---

 Repair instructions  Notes