

**NUMBER:** 23-011-14 REV. A

**GROUP:** Body

**DATE:** July 22, 2014

*This bulletin is supplied as technical information only and is not an authorization for repair. No part of this publication may be reproduced, stored in a retrieval system, or transmitted, in any form or by any means, electronic, mechanical, photocopying, or otherwise, without written permission of Chrysler Group LLC.*

**THIS BULLETIN SUPERSEDES SERVICE BULLETIN 23-011-14, DATED MAY 16, 2014, WHICH SHOULD BE REMOVED FROM YOUR FILES. ALL REVISIONS ARE HIGHLIGHTED WITH **\*\*ASTERISKS\*\*** AND INCLUDE ADDING INSPECTION STEP AND INSPECTION LABOR OPERATION NUMBER.**

**THIS SERVICE BULLETIN IS ALSO BEING RELEASED AS RAPID RESPONSE TRANSMITTAL (RRT) 14-041. ALL APPLICABLE SOLD AND UN-SOLD RRT VIN'S HAVE BEEN LOADED. TO VERIFY THAT THIS RRT SERVICE ACTION IS APPLICABLE TO THE VEHICLE, USE VIP OR PERFORM A VIN SEARCH IN TECHCONNECT. ALL REPAIRS ARE REIMBURSABLE WITHIN THE PROVISIONS OF WARRANTY.**

**SUBJECT:**

Left Rear Sliding Door Weatherstrip Seal Sticks Out At Bottom Of C-Pillar Door Opening

**OVERVIEW:**

This bulletin involves replacing the left rear C-pillar cut line sliding door seal.

**MODELS:**

2014                      RT                                      Caravan / Town & Country

**NOTE: This bulletin applies to vehicles built on or after March 5, 2014 (MDH 0305XX) and on or before March 11, 2014 (MDH 0311XX).**

**SYMPTOM/CONDITION:**

Some vehicles may have a left rear sliding door weatherstrip seal that sticks out along the C-pillar side of the door opening as shown in (Fig. 1).

**DIAGNOSIS:**

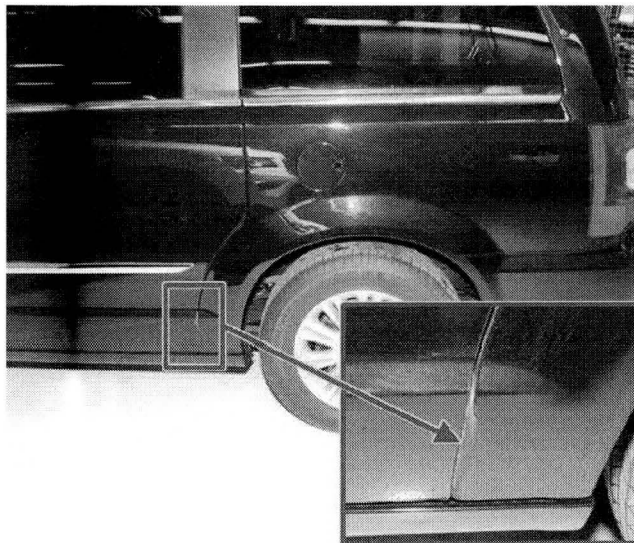
If a customer's VIN is listed in VIP or your RRT VIN list, perform the repair. For all other customers that describe the symptom/condition, perform the Repair Procedure.

**PARTS REQUIRED:**

Qty.	Part No.	Description
1	68078281AC	SEAL, Rear Door, C-Pillar Cut Line, Left

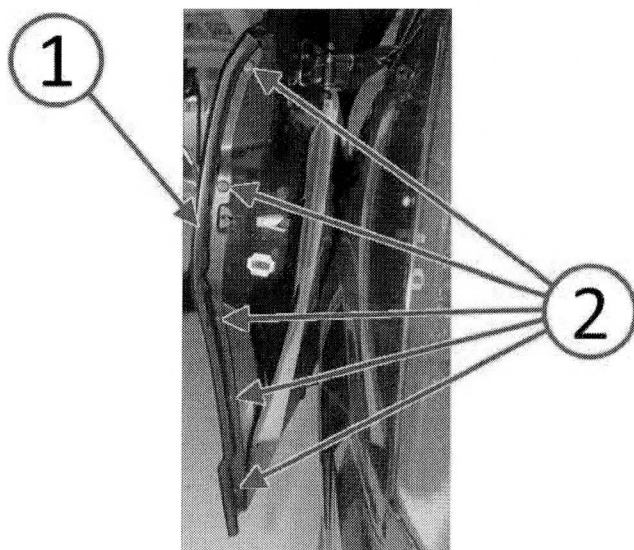
**REPAIR PROCEDURE:**

1. **\*\*Is the left rear sliding door weatherstrip seal sticking out along the C-pillar side of the door opening as shown in (Fig. 1)?**
  - a. YES >>> Continue with Step #2.
  - b. No >>> No further action is required. This bulletin does not apply.\*\*



**Fig. 1 Symptom Condition Area Of Concern**

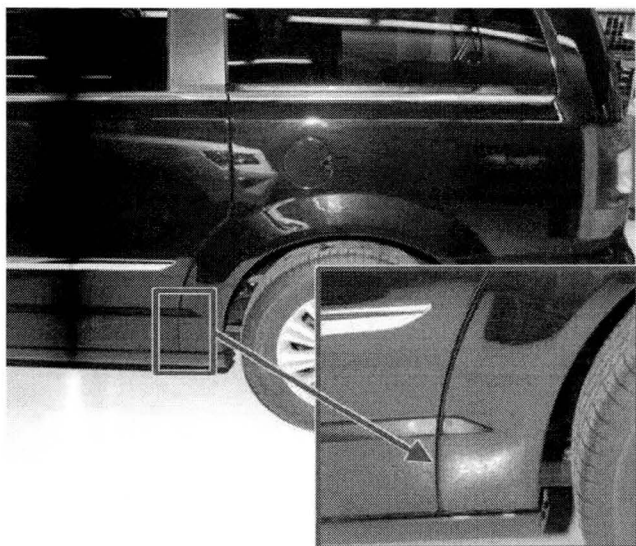
2. Replace the weatherstrip seal on the left rear sliding door with the seal specified in the PARTS REQUIRED section of this bulletin (Fig. 2).



**Fig. 2 Door Weatherstrip Seal Replacement**

- 1 - Weatherstrip Seal  
2 - Fir-Tree Fasteners
-

3. Verify that the symptom/condition has been corrected as shown in (Fig. 3).



**Fig. 3 Symptom Condition Corrected**

**POLICY:**

Reimbursable within the provisions of the warranty.

**TIME ALLOWANCE:**

Labor Operation No:	Description	Skill Category	Amount
**23-51-37-91**	**Inspect Weatherstrip/Seal, Sliding Door C-Pillar Cut Line (1 - Semi-Skilled)**	**6 - Electrical and Body Systems**	**0.2 Hrs.**
23-51-37-90	Weatherstrip/Seal, Sliding Door C-Pillar Cut Line - Replace Left Side (1 - Semi-Skilled)	6 - Electrical and Body Systems	0.2 Hrs.

**FAILURE CODE:**

ZZ	Service Action
----	----------------