

 Connection offline

Technical product information

Topic	Water ingress – hood stowage area - high mounted stop lamp
Market area	Worldwide Bentley (1WBE)
Brand	Bentley
Transaction No.	2035817/1
Level	EH
Status	Approval
Release date	

New customer code

Object of complaint	Complaint type	Position
Roof systems, special bodies -> Convertible roof	leaks	

New workshop code

Object of complaint	Complaint type	Position
Lighting system, signalling -> Exterior lights -> Additional brake light	leaks -> leaking	

Vehicle data

GTC

Sales types


Type	MY	Brand	Designation	Engine code	Gearbox code	Final drive code
394*	2012	E		*	*	*
394*	2013	E		*	*	*
394*	2014	E		*	*	*
3W78*	2012	E		*	*	*
3W78*	2013	E		*	*	*
3W78*	2014	E		*	*	*

Chassis numbers

Manufacturer	Filler	Type	Filler	MY	Factory	From	To	Prod from	Prod to
SCB	**	**	*	*	C				

Documents

Document name
master.xml
master.doc

 Connection offline

Technical product information

Transaction No.: 2035817/1

Water ingress – hood stowage area - high mounted stop lamp

Customer statement / workshop findings

Water leaks into hood stowage area

Technical background

Seal failure between the brightware containing the high mounted stop lamp, and the tonneau cover, can lead to water ingress into the hood stowage area

Production change

Improved seal used from VIN SCBGT3ZA9EC092110

Measure

When a water leak investigation identifies a leak path via the tonneau brightware then the following operation is applicable

1. Remove the tonneau cover brightware refer to workshop manual Rep.Gr. 66 Brightware/blackware assembly (including stop lamp) To remove and fit

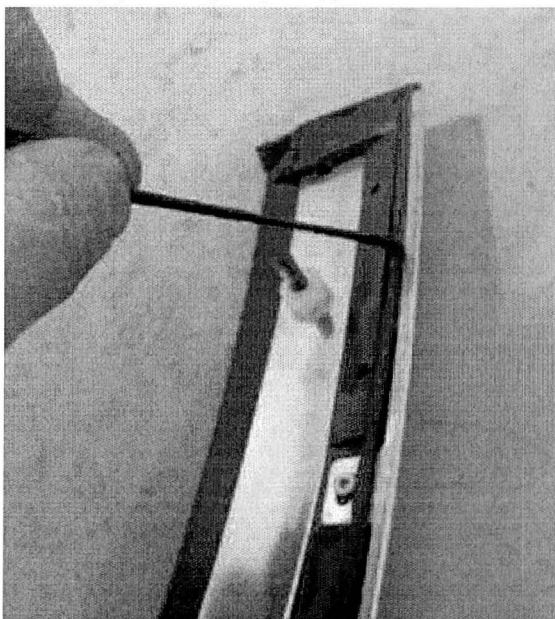


Figure 1

2. Remove the original seal and thoroughly clean the surface on which the new seals will be positioned (see Figure 1)

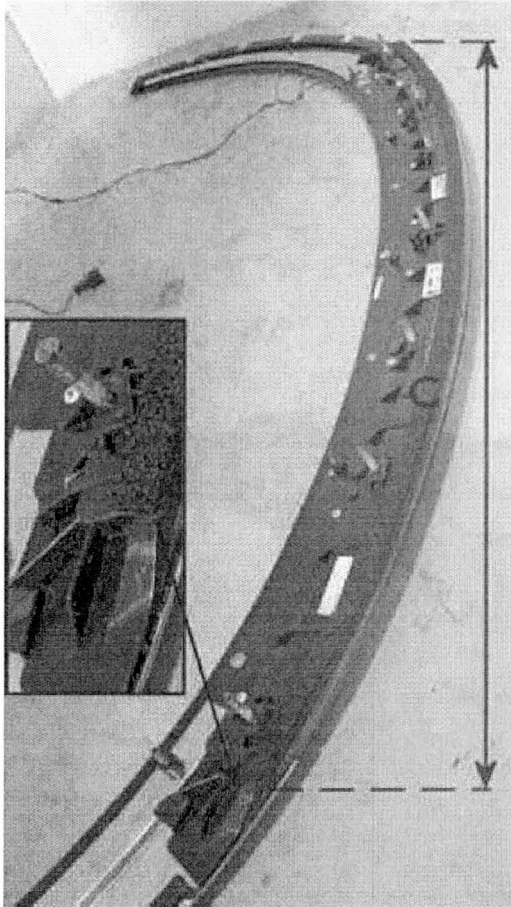


Figure 2

3. Fit new central foam strip (C) part number 3W7854335. Fit this foam strip centrally on the base of the stop lamp housing (see figure 2)

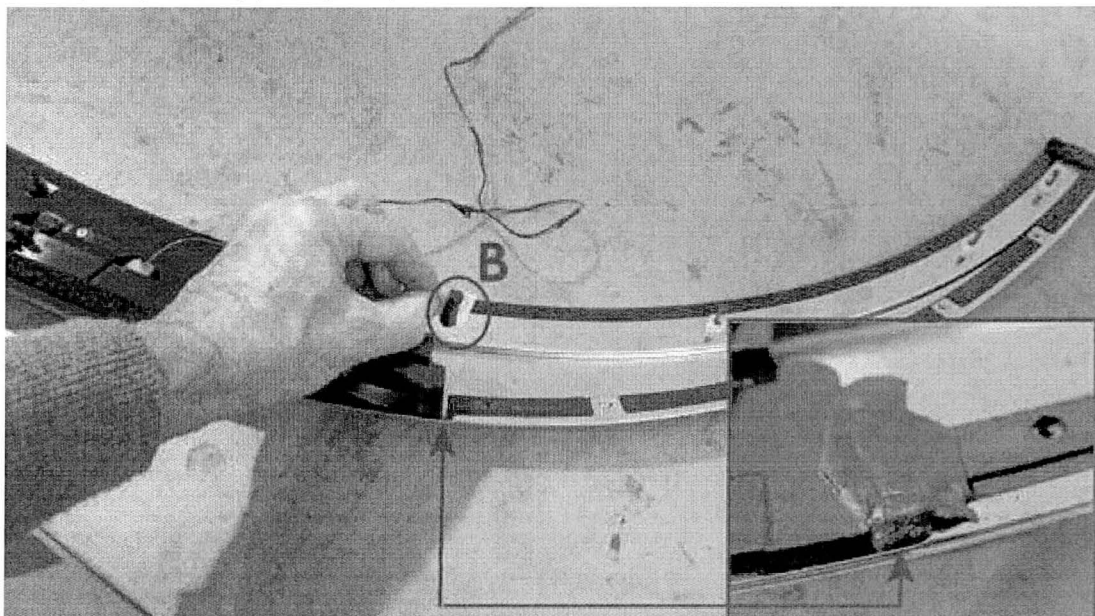


Figure 3

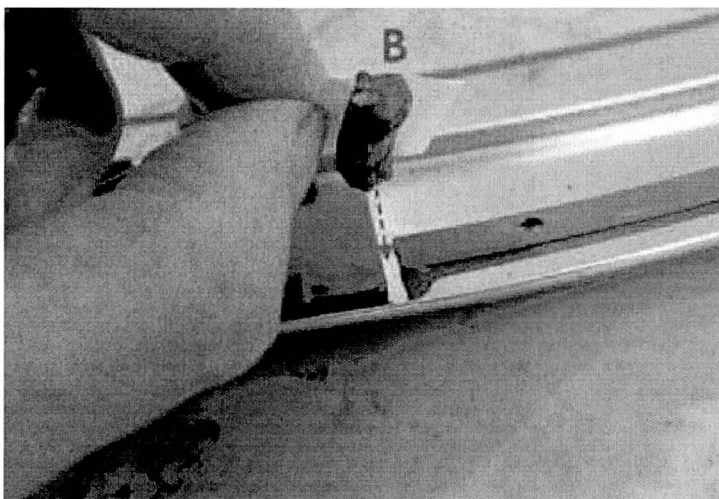


Figure 3a

4. Cut two 15mm length of butyl seal from the roll (part number 3W7854546) manipulate these cut lengths of butyl seal (B) into the two slots adjacent to either side of the stop lamp housing to produce a water tight seal and bridge the gap (see Figure 3 and 3a)

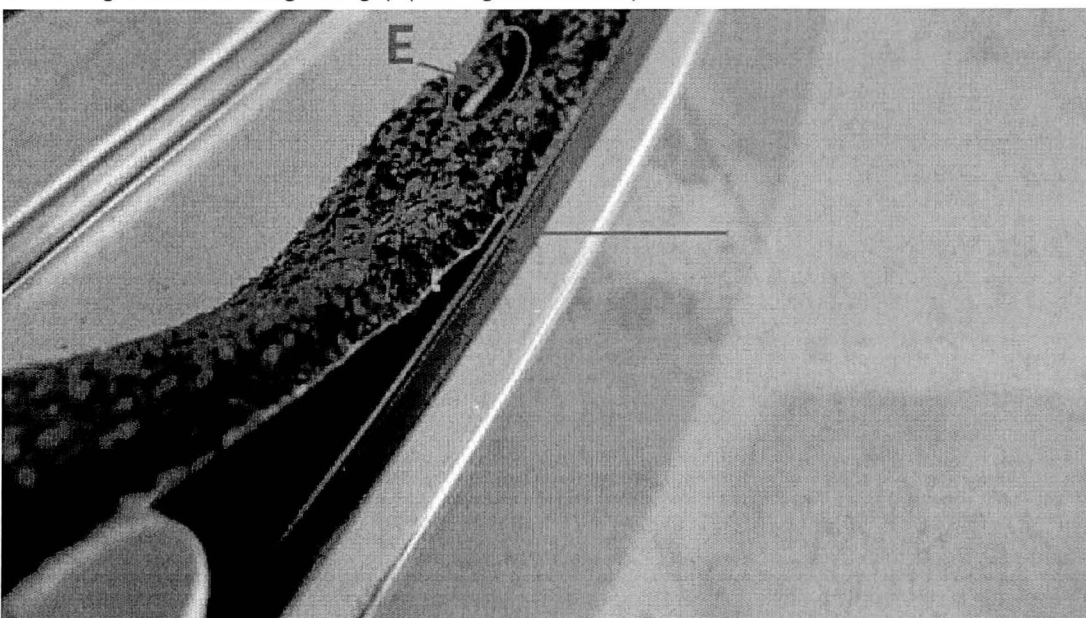


Figure 4

5. Fit the two side seals (D) part number 3W7854336. Align slots (E) cut into this seal with the thread insert in the brightware. Seal (D) should line up with the raised edge of the plastic structure (see arrow Figure 4)

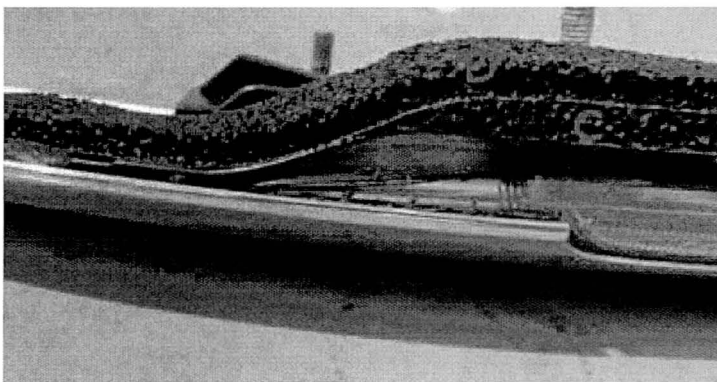


Figure 5

6. Seal D should pass over seal C creating a double seal thickness on the stop lamp moulding (see Figure 5)

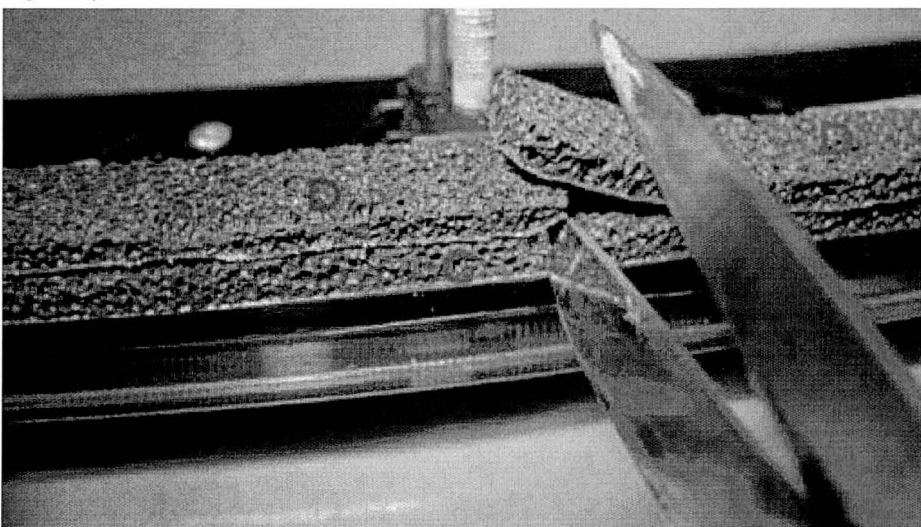


Figure 6

7. Where the two side seals (D) meet in the centre of the assembly cut off the excess to create a butt joint (see Figure 6)
8. Thoroughly clean the tonneau panel prior to refitting the tonneau brightware
9. Refit the tonneau brightware refer to workshop manual Rep.Gr. 66 Brightware/blackware assembly (including stop lamp) To remove and fit

Warranty accounting instructions

Only applicable for car that are currently covered by manufacturers' warranty

Warranty Type	110
Labour Operation Code	94 70 49 00
Damage Service Number	94 70
Damage Code	01 00
Time	150 TU

Parts information

New Part Number	Description	Displaced Part Number	Quantity
3W7854335	Foam centre strip (no holes)	3W7854849	1
3W7854336	Foam side strip (holes)		2
** 3W7854546	Butyl seal		1 roll **

** NOTE: Part number 3W7854546 will deliver one roll of butyl strip from which sufficient lengths can be cut to complete many cars