

# **VANTRAAX®**

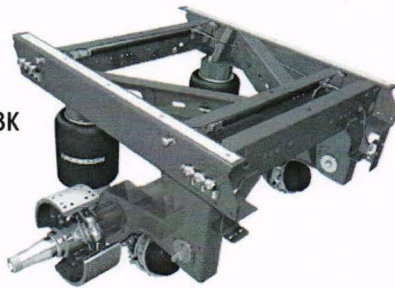
## HKANL 23K/HKANT 23K/40K/ 46K/69K23/HKAT 50K/69K25 and HKARL Specifications

LIT NO: L629

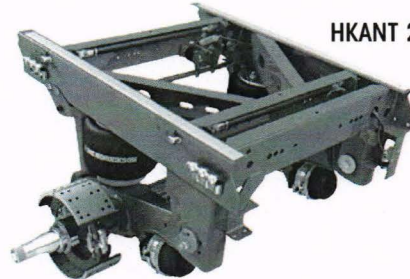
DATE: July 2014

REVISION: J

HKANL 23K



HKANT 23K



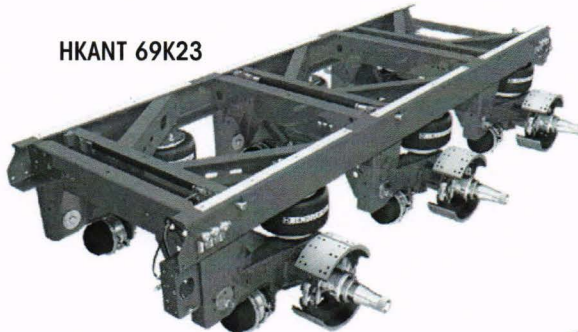
HKARL 46K



HKAT 50K



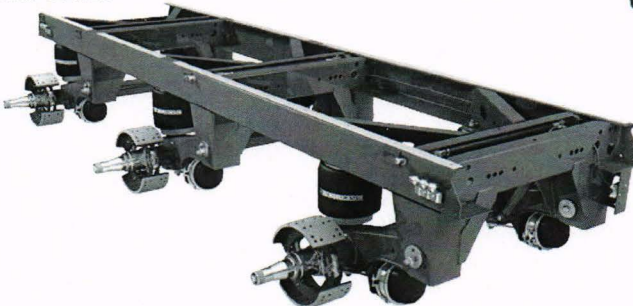
HKANT 69K23



HKANT 40K and 46K



HKAT 69K25





**TABLE OF CONTENTS**

**SPECIFICATIONS**

HKANL 23K ..... 3

HKANT 23K ..... 4

HKANT 40K ..... 5

HKANT 46K ..... 6

HKANT 46K - 121 Spread. .... 7

HKAT 50K. .... 8

HKANT 69K23 ..... 9

HKAT 69K25 ..... 10

HKARL 46K. .... 11

Brake Options ..... 12

Brake Chambers ..... 12

Brake Adjusters ..... 12

RTR® READY-TO-ROLL® ..... 12

Height Control Valves. .... 12

**OPTIONS** ..... 12



**HKANL 23K**

<b>SYSTEM CAPACITY*</b>	23,000 lbs. (10 400 kg)
<b>APPLICATION</b>	On-highway or maintained roads; not available in "high control" for single-axle, multi-trailer applications
<b>TRAILER TYPES<sup>1,2</sup></b>	<b>U.S.A. and Canada:</b> Dry, refrigerated and specialty van <b>Mexico, Central and South America:</b> None
<b>AXLE DATA</b>	<b>Diameter:</b> 5.75-inch LDA™ Large-Diameter Axle <b>Arrangement:</b> Single <b>Track:</b> 71.5-, 77.5- and 83.5-inch <b>Spread:</b> N/A
<b>FRAME TYPES</b>	Steel only: 96- and 102-inch wide trailers (42-, 48- and 54-inch wide slider boxes)
<b>BASE MODEL DESCRIPTION</b>	HKANL 23K VANTRAAX® slider suspension system consisting of 48-inch wide slider box with 16- or 17-inch ride height suspension, 77.5-inch axle track, HN spindles, 16.5- x 7-inch brakes with Abex 3030-197 brake lining, ABS brackets, QUIK-ALIGN® pivot connection, QUIK-DRAW® pin-pull mechanism and standard Cam Tube System™.

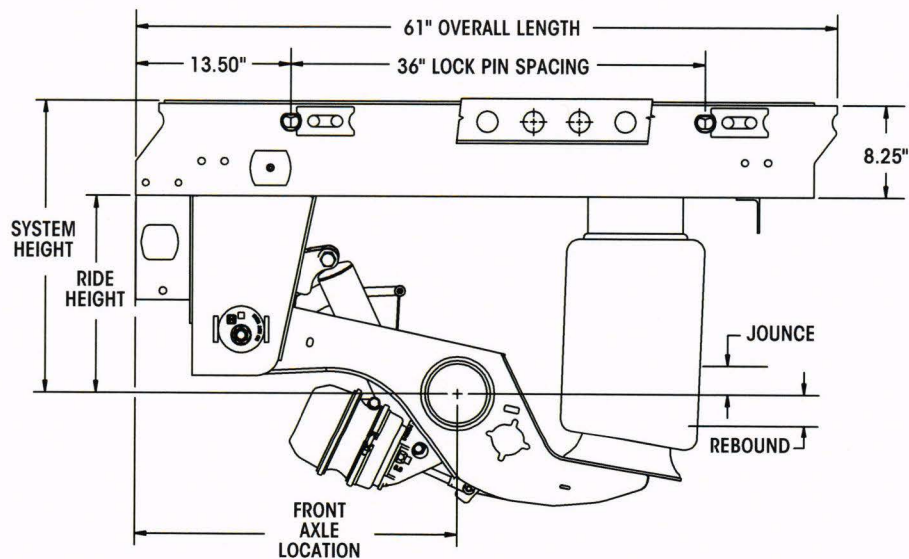


\* System capacity refers to the suspension, axle and slider. Ratings for brakes and wheel-end components differ depending upon options chosen.  
 1. Review tire clearance. Wheel cut outs may be necessary.  
 2. Your trailer body rails must be able to support the lifted VANTRAAX System.

AXLE SPREAD (inches)	RIDE HEIGHT (inches)	SYSTEM HEIGHT (inches)	FRONT AXLE LOCATION (inches)	JOUNCE (inches)	REBOUND (inches)	WEIGHT (pounds)
N/A	16	24.25	28.1	5.5	4.3	857
	17	25.25	27.9	6.5	3.3	857

Note: Weight includes 48-inch wide slider, suspension, HN LDA™ Large-Diameter Axle (5.75-inch) and foundation brake components (body rail weights not included). For a 42-inch wide slider system, deduct 21 pounds. For a 54-inch wide slider system, add 23 pounds. For fixed-pin option, deduct 8 pounds. Does not include box shims.

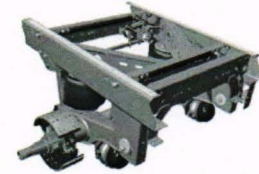
**SPECIFICATIONS**





**HKANT 23K**

<b>SYSTEM CAPACITY*</b>	23,000 lbs. (10 400 kg)
<b>APPLICATION</b>	On-highway or maintained roads; not available in "high control" for single-axle, multi-trailer applications
<b>TRAILER TYPES</b>	<b>U.S.A. and Canada:</b> Dry, refrigerated and specialty van <b>Mexico, Central and South America:</b> None
<b>AXLE DATA</b>	<b>Diameter:</b> 5.75-inch LDA™ Large-Diameter Axle <b>Arrangement:</b> Single <b>Track:</b> 71.5-, 77.5- and 83.5-inch <b>Spread:</b> N/A
<b>FRAME TYPES</b>	Steel only: 96- and 102-inch wide trailers (42-, 48- and 54-inch wide slider boxes)
<b>BASE MODEL DESCRIPTION</b>	HKANT 23K VANTRAA <sup>®</sup> slider suspension system consisting of 48-inch wide slider box with 16-inch ride height suspension, 77.5-inch axle track, HN spindles, 16.5- x 7-inch brakes with Abex 3030-197 brake lining, ABS brackets, QUIK-ALIGN <sup>®</sup> pivot connection, QUIK-DRAW <sup>®</sup> pin-pull mechanism and standard Cam Tube System™.

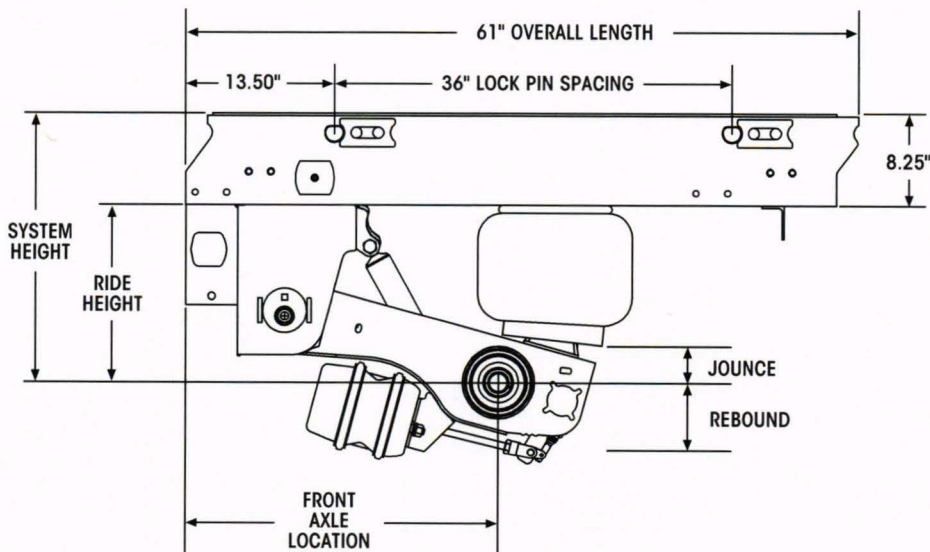


\*System capacity refers to the suspension, axle and slider. Ratings for brakes and wheel-end components differ depending upon options chosen.

AXLE SPREAD (inches)	RIDE HEIGHT (inches)	SYSTEM HEIGHT (inches)	FRONT AXLE LOCATION (inches)	JOUNCE (inches)	REBOUND (inches)	WEIGHT (pounds)
N/A	16	24.25	28.4	2.8	4.5	785
	17	25.25	28.0	2.8	3.5	787

Note: Weight includes 48-inch wide slider, suspension, HN LDA™ Large-Diameter Axle (5.75-inch) and foundation brake components (body rail weights not included). For a 42-inch wide slider system, deduct 19 pounds. For a 54-inch wide slider system, add 24 pounds. For fixed-pin option, deduct 8 pounds. Does not include box shims.

**SPECIFICATIONS**





## HKANT 40K

<b>SYSTEM CAPACITY*</b>	40,000 lbs. (18 000 kg)
<b>APPLICATION</b>	On-highway
<b>TRAILER TYPES</b>	<b>U.S.A. and Canada:</b> Dry and refrigerated van <b>Mexico, Central and South America:</b> None
<b>AXLE DATA</b>	<b>Diameter:</b> 5.75-inch LDA™ Large-Diameter Axle <b>Arrangement:</b> Tandem <b>Track:</b> 71.5-, 77.5- and 83.5-inch <b>Spread:</b> 49-inch
<b>FRAME TYPES</b>	Steel only: 96- and 102-inch wide trailers (42-, 48- and 54-inch wide slider boxes)
<b>BASE MODEL DESCRIPTION</b>	HKANT 40K VANTRAA <sup>®</sup> slider suspension system consisting of 49-inch spread, 48-inch wide slider box with two 16-inch ride height suspensions, 77.5-inch axle track, HN spindles, 16.5- x 7-inch brakes with Abex 3030-197 brake lining, ABS brackets, QUIK-ALIGN <sup>®</sup> pivot connection, QUIK-DRAW <sup>®</sup> pin-pull mechanism and standard Cam Tube System™.

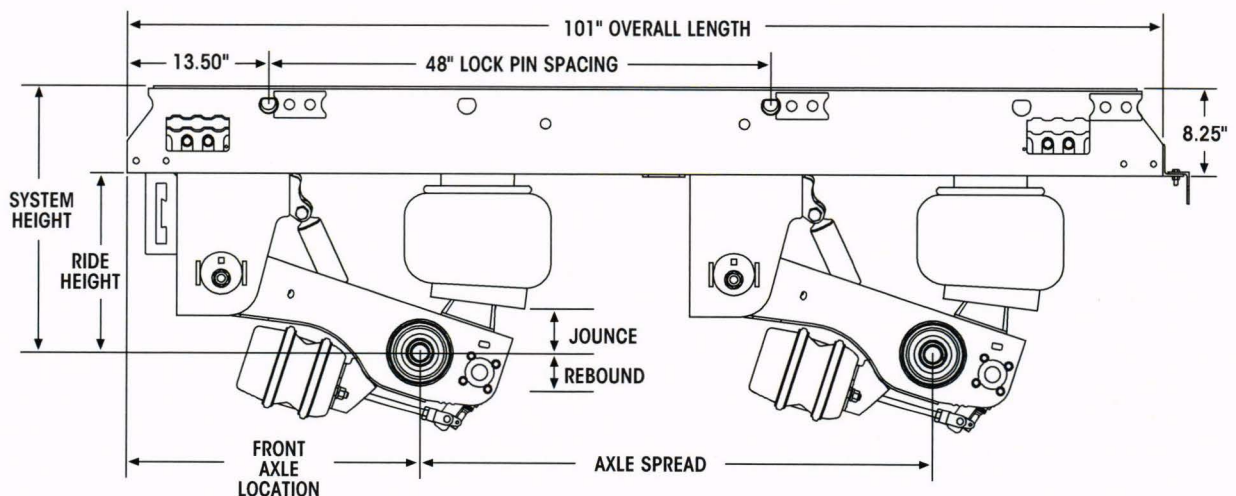


\*System capacity refers to the suspensions, axles and slider. Ratings for brakes and wheel-end components differ depending upon options chosen.

AXLE SPREAD (inches)	RIDE HEIGHT (inches)	SYSTEM HEIGHT (inches)	FRONT AXLE LOCATION (inches)	JOUNCE (inches)	REBOUND (inches)	WEIGHT (pounds)
49	16	24.25	28.4	2.8	4.5	1,394
	17	25.25	28.0	2.8	3.5	1,398

Note: Weight includes 48-inch wide slider, suspensions, HN LDA™ Large-Diameter Axle (5.75-inch) and foundation brake components (body rail weights not included). For a 42-inch wide slider system, deduct 33 pounds. For a 54-inch wide slider system, add 33 pounds. For manual pin-pull mechanism, add 13 pounds. Does not include SURELOK<sup>®</sup> or box shims.

## SPECIFICATIONS

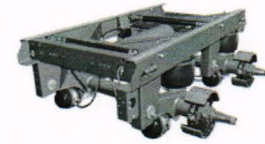


# VANTRAAX® SPECIFICATIONS



## HKANT 46K

<b>SYSTEM CAPACITY*</b>	46,000 lbs. (20 700 kg)
<b>APPLICATION</b>	On-highway or maintained roads
<b>TRAILER TYPES</b>	<b>U.S.A. and Canada:</b> Dry, refrigerated and specialty van <b>Mexico, Central and South America:</b> None
<b>AXLE DATA</b>	<b>Diameter:</b> 5.75-inch LDA™ Large-Diameter Axle <b>Arrangement:</b> Tandem <b>Track:</b> 71.5-, 77.5- and 83.5-inch <b>Spread:</b> 49-inch
<b>FRAME TYPES</b>	Steel only: 96- and 102-inch wide trailers (42-, 48- and 54-inch wide slider boxes)
<b>BASE MODEL DESCRIPTION</b>	HKANT 46K VANTRAAX® slider suspension system consisting of 49-inch spread, 48-inch wide slider box with two 16-inch ride height suspensions, 77.5-inch axle track, HN spindles, 16.5- x 7-inch brakes with Abex 3030-197 brake lining, ABS brackets, QUIK-ALIGN® pivot connection, QUIK-DRAW® pin-pull mechanism and standard Cam Tube System™.

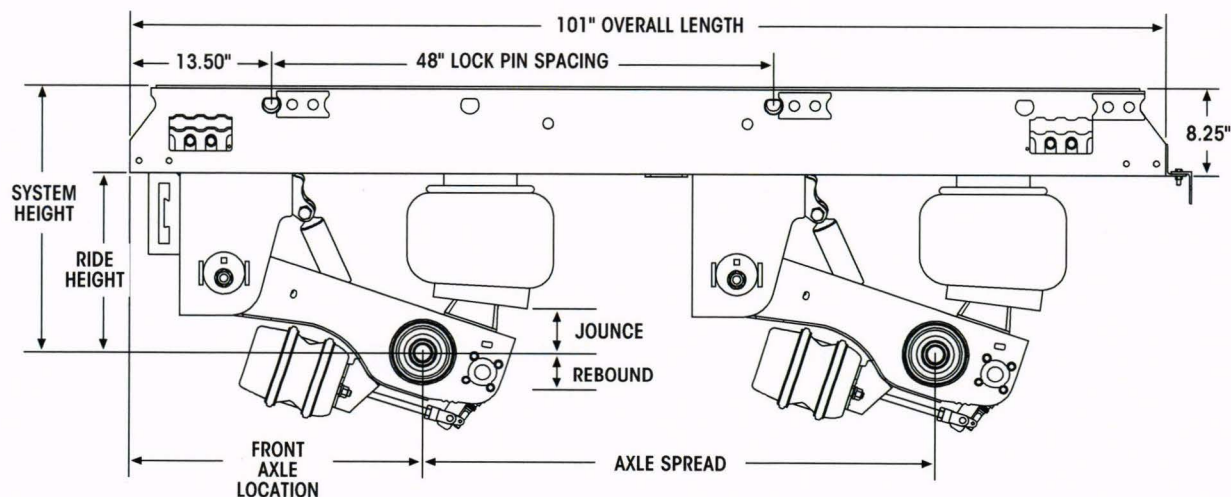


\*System capacity refers to the suspensions, axles and slider. Ratings for brakes and wheel-end components differ depending upon options chosen.

AXLE SPREAD (inches)	RISE HEIGHT (inches)	SYSTEM HEIGHT (inches)	FRONT AXLE LOCATION (inches)	JOUNCE (inches)	REBOUND (inches)	WEIGHT (pounds)
49	16	24.25	28.4	2.8	5.5	1,405
	17	25.25	28.0	2.8	4.5	1,409

Note: Weight includes 48-inch wide slider, suspensions, HN LDA™ Large-Diameter Axle (5.75-inch) and foundation brake components (body rail weights not included). For a 42-inch wide slider system, deduct 33 pounds. For a 54-inch wide slider system, add 33 pounds. For manual pin-pull mechanism, add 13 pounds. Does not include SURELOK® or box shims.

## SPECIFICATIONS

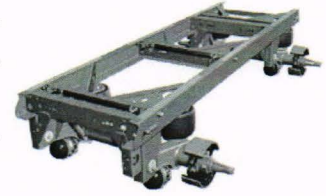




# VANTRAAX® SPECIFICATIONS

## HKANT 46K — 121-inch Spread

<b>SYSTEM CAPACITY*</b>	46,000 lbs. (20 700 kg)
<b>APPLICATION</b>	On-highway or maintained roads
<b>TRAILER TYPES</b>	<b>U.S.A. and Canada:</b> Dry, refrigerated and specialty van <b>Mexico, Central and South America:</b> None
<b>AXLE DATA</b>	<b>Diameter:</b> 5.75-inch LDA™ Large-Diameter Axle <b>Arrangement:</b> Tandem <b>Track:</b> 77.5- and 83.5-inch <b>Spread:</b> 121-inch
<b>FRAME TYPES</b>	Steel only: 102-inch wide trailers (48- and 54-inch wide slider boxes)
<b>BASE MODEL DESCRIPTION</b>	HKANT 46K VANTRAAX® slider suspension system consisting of 49-inch spread, 48-inch wide slider box with two 16-inch ride height suspensions, 77.5-inch axle track, HN spindles, 16.5- x 7-inch brakes with Abex 3030-197 brake lining, ABS brackets, QUIK-ALIGN® pivot connection, QUIK-DRAW® pin-pull mechanism and standard Cam Tube System™.

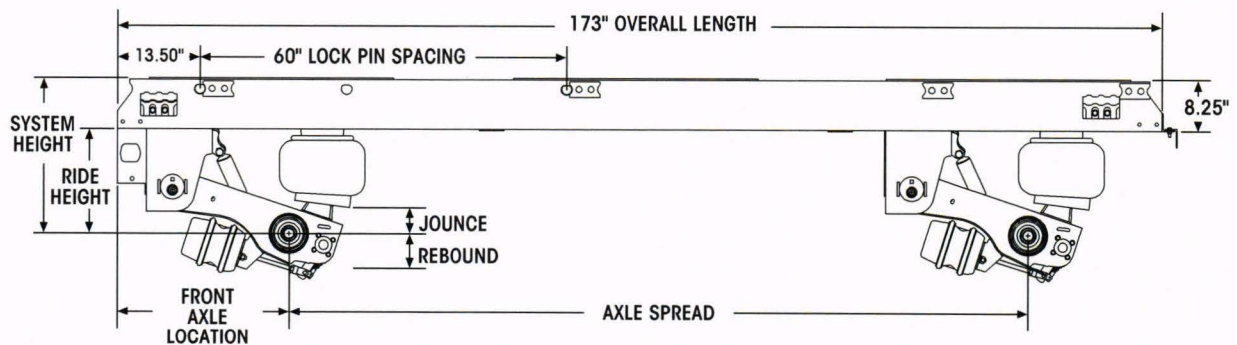


\*System capacity refers to the suspensions, axles and slider. Ratings for brakes and wheel-end components differ depending upon options chosen.

AXLE SPREAD (inches)	RISE HEIGHT (inches)	SYSTEM HEIGHT (inches)	FRONT AXLE LOCATION (inches)	JOUNCE (inches)	REBOUND (inches)	WEIGHT (pounds)
121	16	24.25	28.4	2.8	4.5	1,652
	17	25.25	28.0	2.8	3.5	1,656

Note: Weight includes 48-inch wide slider, suspensions, HN LDA™ Large-Diameter Axle (5.75-inch) and foundation brake components (body rail weights not included). For a 54-inch wide slider system, add 45 pounds. For fixed-pin option, deduct 9 pounds. Does not include SURELOK® or box shims.

## SPECIFICATIONS

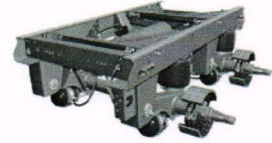


# VANTRAA<sup>®</sup> SPECIFICATIONS



## HKAT 50K

<b>SYSTEM CAPACITY*</b>	50,000 lbs. (22 500 kg)
<b>APPLICATION</b>	On-highway or maintained roads "domiciled in Mexico"
<b>TRAILER TYPES</b>	<b>U.S.A. and Canada:</b> Dry, refrigerated and specialty van <b>Mexico, Central and South America:</b> Dry, refrigerated and specialty van
<b>AXLE DATA</b>	<b>Diameter:</b> 5.75-inch LDA™ Large-Diameter Axle <b>Arrangement:</b> Tandem <b>Track:</b> 71.5- and 77.5-inch <b>Spread:</b> 49-inch
<b>FRAME TYPES</b>	Steel only: 96- and 102-inch wide trailers (42- and 48-inch wide slider boxes)
<b>BASE MODEL DESCRIPTION</b>	HKAT 50K VANTRAA <sup>®</sup> slider suspension system consisting of 49-inch spread, 48-inch wide slider box with two 16-inch ride height suspensions, 77.5-inch axle track, HN spindles, 16.5- x 7-inch brakes with Abex 3030-197 brake lining, ABS brackets, QUIK-ALIGN <sup>®</sup> pivot connection, QUIK-DRAW <sup>®</sup> pin-pull mechanism and standard Cam Tube System™.

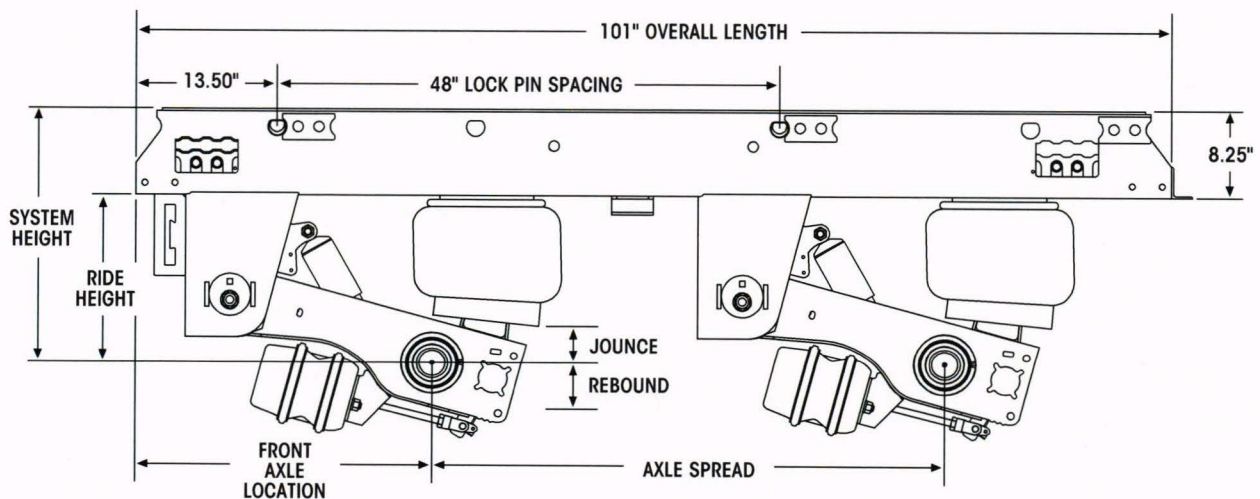


\*System capacity refers to the suspensions, axles and slider. Ratings for brakes and wheel-end components differ depending upon options chosen.

AXLE SPREAD (inches)	RISE HEIGHT (inches)	SYSTEM HEIGHT (inches)	FRONT AXLE LOCATION (inches)	JOUNCE (inches)	REBOUND (inches)	WEIGHT (pounds)
49	16	24.25	28.4	3.1	4.6	1,579
	17	25.25	28.0	3.3	3.6	1,584

Note: Weight includes 48-inch wide slider, suspensions, HN LDA™ Large-Diameter Axle (5.75-inch) and foundation brake components (body rail weights not included). For a 42-inch wide slider system, deduct 41 pounds. For manual pin-pull mechanism, add 15 pounds. For fixed-pin option, deduct 21 pounds. Does not include SURELOK<sup>®</sup> or box shims.

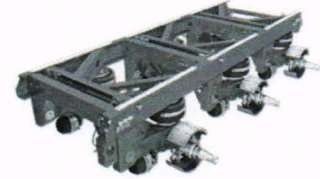
## SPECIFICATIONS





## HKANT 69K23

<b>SYSTEM CAPACITY*</b>	69,000 lbs. (31 200 kg)
<b>APPLICATION</b>	On-highway or maintained roads
<b>TRAILER TYPES</b>	<b>U.S.A. and Canada:</b> Dry, refrigerated and specialty van <b>Mexico, Central and South America:</b> None
<b>AXLE DATA</b>	<b>Diameter:</b> 5.75-inch LDA™ Large-Diameter Axle Capacity: 23,000 lbs. (10 400 kg) <b>Arrangement:</b> Tridem <b>Track:</b> 71.5- and 83.5-inch <b>Spread:</b> 49-, 60- and 72-inch
<b>FRAME TYPES</b>	Steel only: 96- and 102-inch wide trailers (48- and 54-inch wide slider boxes)
<b>BASE MODEL DESCRIPTION</b>	HKANT 69K23 VANTRAAX® slider suspension system consisting of 72-inch spread, 48-inch wide slider box with three 16-inch ride height suspensions, 77.5-inch axle track, HN spindles, 16.5- x 7-inch brakes with Abex 3030-197 brake lining, ABS brackets, QUIK-ALIGN® pivot connection, QUIK-DRAW® pin-pull mechanism and standard Cam Tube System™.

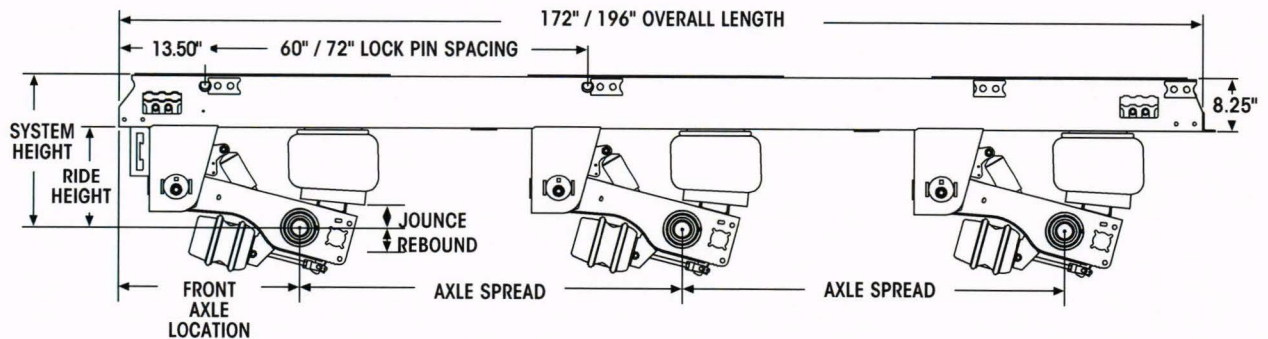


\*System capacity refers to the suspensions, axles and slider. Ratings for brakes and wheel-end components differ depending upon options chosen.

AXLE SPREAD (inches)	RISE HEIGHT (inches)	SYSTEM HEIGHT (inches)	FRONT AXLE LOCATION (inches)	JOUNCE (inches)	REBOUND (inches)	WEIGHT (pounds)
60	16	24.25	28.4	2.8	4.7	2,188
	17	25.25	28.0	3.0	3.7	2,195
72	16	24.25	28.4	2.8	4.7	2,236
	17	25.25	28.0	3.0	3.7	2,242
49	16	24.25	28.4	2.8	4.7	2,143
	17	25.25	28.0	3.0	3.7	2,149

Note: Weight includes 48-inch wide slider, suspensions, HN LDA™ Large-Diameter Axle (5.75-inch) and foundation brake components (body rail weights not included). For a 42-inch wide slider system, deduct 59 pounds. For a 54-inch wide slider system, add 61 pounds. For manual pin-pull mechanism, add 18 pounds for the 72-inch spread model and 14 pounds for the 60-inch spread model. For fixed-pin option, deduct 24 pounds for the 72-inch spread model and 26 pounds for the 60-inch spread model. Does not include SURELOK® or box shims.

## SPECIFICATIONS



# VANTRAAX® SPECIFICATIONS



## HKAT 69K25

<b>SYSTEM CAPACITY*</b>	69,000 lbs. (31 200 kg)
<b>APPLICATION</b>	On-highway or maintained roads
<b>TRAILER TYPES</b>	<b>U.S.A. and Canada:</b> Dry, refrigerated and specialty van <b>Mexico, Central and South America:</b> None
<b>AXLE DATA</b>	<b>Diameter:</b> 5.75-inch LDA™ Large-Diameter Axle <b>Capacity:</b> 25,000 lbs. (11 300 kg) <b>Arrangement:</b> Tridem <b>Track:</b> 71.5-, 77.5 and 83.5-inch <b>Spread:</b> 60- and 72-inch
<b>FRAME TYPES</b>	Steel only; 96- and 102-inch wide trailers (42-, 48- and 54-inch wide slider boxes)
<b>BASE MODEL DESCRIPTION</b>	HKANT 69K25 VANTRAAX® slider suspension system consisting of 72-inch spread, 48-inch wide slider box with three 16-inch ride height suspensions, 77.5-inch axle track, HN spindles, 16.5- x 7-inch brakes with Abex 3030-197 brake lining, ABS brackets, QUIK-ALIGN® pivot connection, QUIK-DRAW® pin-pull mechanism and standard Cam Tube System™.

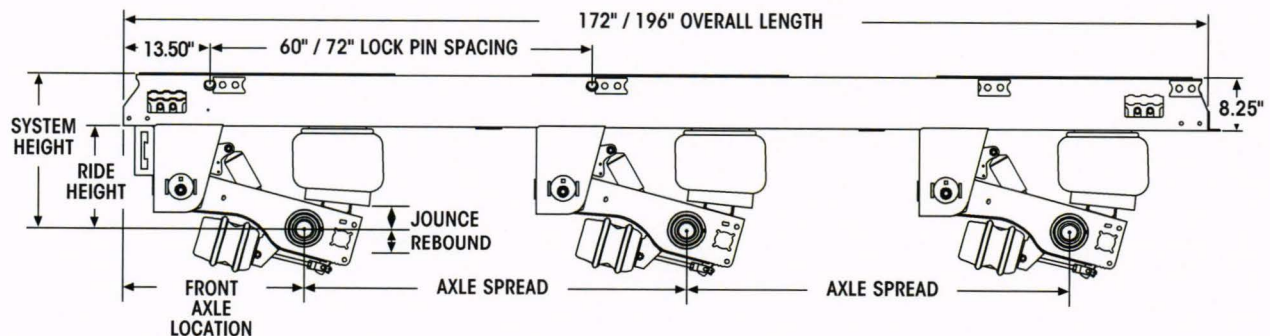


\*System capacity refers to the suspensions, axles and slider. Ratings for brakes and wheel-end components differ depending upon options chosen.

AXLE SPREAD (inches)	RISE HEIGHT (inches)	SYSTEM HEIGHT (inches)	FRONT AXLE LOCATION (inches)	JOUNCE (inches)	REBOUND (inches)	WEIGHT (pounds)
60	16	24.25	28.4	3.1	4.6	2,420
	17	25.25	28.0	3.0	3.6	2,427
72	16	24.25	28.4	3.1	4.6	2,479
	17	25.25	28.0	3.0	3.6	2,486

Note: Weight includes 48-inch wide slider, suspensions, HN LDA™ Large-Diameter Axle (5.75-inch) and foundation brake components (body rail weights not included). For a 42-inch wide slider system, deduct 66 pounds. For a 54-inch wide slider system, add 68 pounds. For manual pin-pull mechanism, add 18 pounds for the 72-inch spread model and 14 pounds for the 60-inch model. For fixed-pin option, deduct 24 pounds for the 72-inch spread model and 26 pounds for the 60-inch spread model. Does not include SURELOK® or box shims.

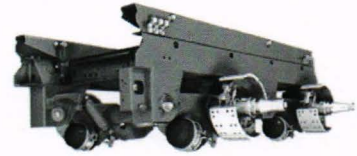
## SPECIFICATIONS





HKARL 46K

<b>SYSTEM CAPACITY*</b>	46,000 lbs. (20 700 kg)
<b>APPLICATION</b>	On-highway or maintained roads
<b>TRAILER TYPES</b>	<b>U.S.A. and Canada:</b> Dry, refrigerated and specialty van <b>Mexico, Central and South America:</b> None
<b>AXLE DATA</b>	<b>Diameter:</b> 5.75-inch LDA™ Large-Diameter Axle <b>Arrangement:</b> Tandem <b>Track:</b> 77.5-inch <b>Spread:</b> 49-inch
<b>FRAME TYPES</b>	Steel only: 96- and 102-inch wide trailers (48-inch wide slider boxes)
<b>BASE MODEL DESCRIPTION</b>	HKARL 46K VANTRAAX® slider suspension system consisting of 48-inch wide slider box with 10- or 11-inch ride height suspensions, 77.5-inch axle track, HN spindles, 16.5- x 7-inch brakes with Abex 3030-197 brake lining, ABS brackets, QUIK-ALIGN® pivot connection, QUIK-DRAW® pin-pull mechanism and standard Cam Tube System™.

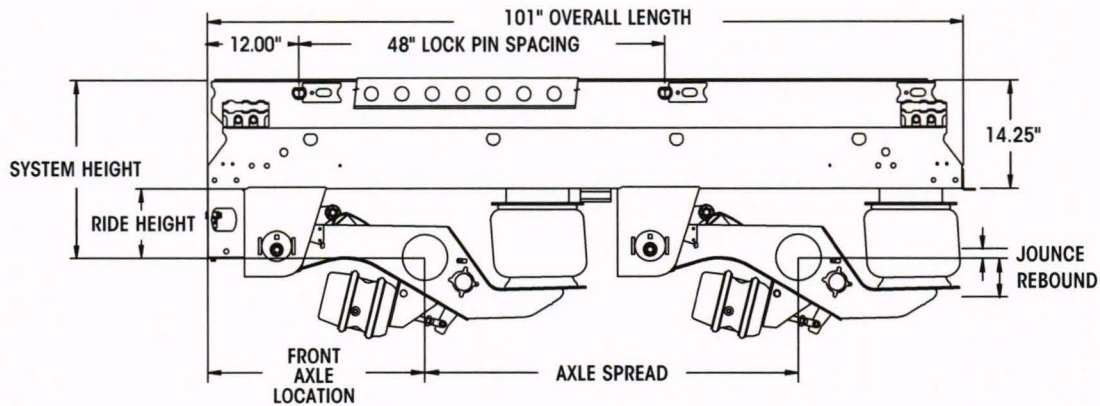


\*System capacity refers to the suspension, axle and slider. Ratings for brakes and wheel-end components differ depending upon options chosen.

AXLE SPREAD (inches)	RISE HEIGHT (inches)	SYSTEM HEIGHT (inches)	FRONT AXLE LOCATION (inches)	JOUNCE (inches)	REBOUND (inches)	WEIGHT (pounds)
49	10	24.25	28.5	3.3	4.8	1,840
	11	25.25	28.5	3.4	4.2	1,856

Note: Weight includes 48-inch wide slider, suspensions, HN 5-inch axles and foundation brake components (body rail weights not included). 42-inch wide slider system not available. For manual pin-pull mechanism, add 14 pounds. For fixed-pin option, deduct 8 pounds. Does not include box shims.

SPECIFICATIONS





## BRAKE OPTIONS

For complete details on the wide range of brake options available including lining choices, brake ratings and FMVSS/CMVSS 121 brake certifications, refer to publication *L809, Brake Specifications*. Air disc brake packages available on VANTRAAX® HKANT models. Please contact Hendrickson for assistance.

## BRAKE CHAMBERS

Industry standard brake chambers with pushrod length of 9.75-inches and clamping / port orientation of zero degrees are compatible except HKARL models which are specified with a pushrod length of 7 inches.

## BRAKE ADJUSTERS

Industry standard 5.5- and 6-inch brake adjusters are compatible.

## RTR® READY-TO-ROLL®

Choose from a broad mix of offerings to customize running gear for your specific application. Wheel-end options consist of aluminum, ductile iron or ADI in a variety of standard and extended service packages.

## HEIGHT CONTROL VALVES

For complete details on available height control valve kits, refer to publication *L1182, Controls Parts Catalog*.

## OPTIONS

### SLIDER PIN EXTRACTOR

QUICK-DRAW® — fully pneumatic, pin-pull mechanism  
Fixed-pin option — slider pins only for fixed van applications

### SURELOK®

Dock height lock that maintains trailer at deck height while minimizing trailer walk during loading and unloading

### DUST SHIELD

Clamp-on dust shield provides protection for both drum and air disc brakes — factory or OEM installed

### WELD-ON AIR TANK BRACKETS

Bracket kits available for customer installation; use with industry standard jumbo or small tanks  
Factory installed brackets available from Hendrickson; use with industry standard jumbo tanks

### MANUAL STOP BAR

Efficiently assists the driver in slider box repositioning

### STINGER

Bolt-on bracket available in 32- or 36-inch lengths — road and curbside mounting ready

### MUD FLAP MOUNTING ANGLE

Bolt-on bracket, attaches to rear cross member

### FACTORY PRE-ALIGNED SLIDERS

Ensures accurate parallelism between two neutral-toe axles

### SOFT COAT FINISH

Provides superior protection against rust and corrosion

### RAMP-READY (HKARL 46K)

Eliminates need for heavy, expensive spacer tubes with built-in 30-inch by 6.5-inch ramp bay — 10- and 11-inch ride heights

### LOW-RIDE (HKAL 46K)\*

Ideal for low-ride height applications — 10- and 11-inch ride heights

### ZMD® ZERO MAINTENANCE DAMPING®

Innovative ride solution exclusively through Hendrickson that eliminates the shock absorbers by integrating the damping function into the air spring.

### SMARTLIFT™

Liftable slider for automatic weight-sensing lift systems that allows one axle to raise and lower to optimize tire life and fuel efficiency with no driver interaction.

*\* Please contact your Hendrickson customer service representative for component information.*

Call your trailer dealer or Hendrickson at **330.489.0045** or **866.RIDEAIR (743.3247)** for additional information.



[www.hendrickson-intl.com](http://www.hendrickson-intl.com)

#### TRAILER COMMERCIAL VEHICLE SYSTEMS

2070 Industrial Place SE  
Canton, OH 44707-2641 USA  
866.RIDEAIR (743.3247)  
330.489.0045 • Fax 800.696.4416

#### Hendrickson Canada

250 Chrysler Drive, Unit #3  
Brampton, ON Canada L6S 6B6  
800.668.5360  
905.789.1030 • Fax 905.789.1033

#### Hendrickson Mexicana

Circuito El Marqués Sur #29  
Parque Industrial El Marqués  
Pob. El Colorado, Municipio El Marqués,  
Querétaro, México C.P. 76246  
+52 (442) 296.3600 • Fax +52 (442) 296.3601