

Tony Lawrence

From: Christopher Ciz
Sent: Tuesday, April 29, 2014 1:33 PM
To: All Dirs All Rgns - PT; All Dirs All Rgns - SR
Subject: MAZDA DEALER NOTICE - SERVICE BULLETIN RELEASE

SERVICE BULLETIN RELEASE - 04/29/2014

2014 INDEX: http://www.mstore2000.com/PDF_Files/index04-29-14.pdf

The following Service Bulletin has just been issued.

- For latest MS3 postings, click here: <https://portal.mazdausa.com/m173/service/esi/MazdaServiceShop>

- For printable PDF files from MStore, click on the link below each TSB title:

* If the links do not automatically take you directly to the document, cut and paste the link into your internet browser address window and press enter.

UPDATED BULLETINS

01-010/14 – MULTI-MODEL (WITH SKYACTIV 2.0L/2.5L) - MIL ON WITH DTC P0191:00 OR P0192:00

http://www.mstore2000.com/PDF_Files/01-010-14-2896b.pdf

05-005/14 – MULTI-MODEL (WITH SKYACTIV 6AT) - CHECK ENGINE LIGHT AND AUTOMATIC TRANSAXLE WARNING LIGHT ON WITH DTC P0842, P0847, P0872 AND/OR P0877 STORED IN TCM MEMORY

http://www.mstore2000.com/PDF_Files/05-005-14-2902d.pdf

09-020/14 – MULTI-MODEL - TOMTOM NAVIGATION FUNCTIONALITY CONCERNS AFTER MSP42

http://www.mstore2000.com/PDF_Files/09-020-14-2913a.pdf

09-021/14 – 2014 MAZDA3 (WITH MAZDA CONNECT) - VARIOUS AUDIO SYSTEM CONCERNS WITH TUNER AND AMP UNIT (TAU)

http://www.mstore2000.com/PDF_Files/09-021-14-2915.pdf

- Please distribute this information to all parts and service personnel.
- **If you no longer wish to receive Mazda bulletins, please contact the IT Administrator at your dealership and ask them to remove your email address from under the EMDCS application.**

Service Bulletin

Mazda North American Operations
Irvine, CA 92618-2922



© 2014 Mazda Motor of America, Inc.

Subject: CHECK ENGINE LIGHT ON WITH DTC P0191:00 OR P0192:00	Bulletin No: 01-010/14
	Last Issued: 04/29/2014

BULLETIN NOTE

- This bulletin supersedes the previous bulletin 01-010/14 issued on 04/07/14 and 04/08/14. The DESCRIPTION has been revised.
- Changes are noted below beside the change bar in Red.

APPLICABLE MODEL(S)/VINS

2012-13 Mazda3 (with SKYACTIV 2.0L)

2013-14 CX-5 vehicles with VINs lower than JM3KE*****420619 (produced before December 1, 2013)

2014 Mazda3 vehicles with VINs lower than JM1BM*****154277 (produced before December 1, 2013)

2014 Mazda6 vehicles with VINs lower than JM1GJ*****162756 (produced before December 1, 2013)

DESCRIPTION

Some vehicles may experience the check engine light on with DTC P0191:00 or DTC P0192:00 stored in memory.

DTC P0191:00: Fuel pressure sensor circuit range/performance problem (except 2014 Mazda3)

DTC P0192:00: Fuel pressure sensor circuit low input (2014 Mazda3)

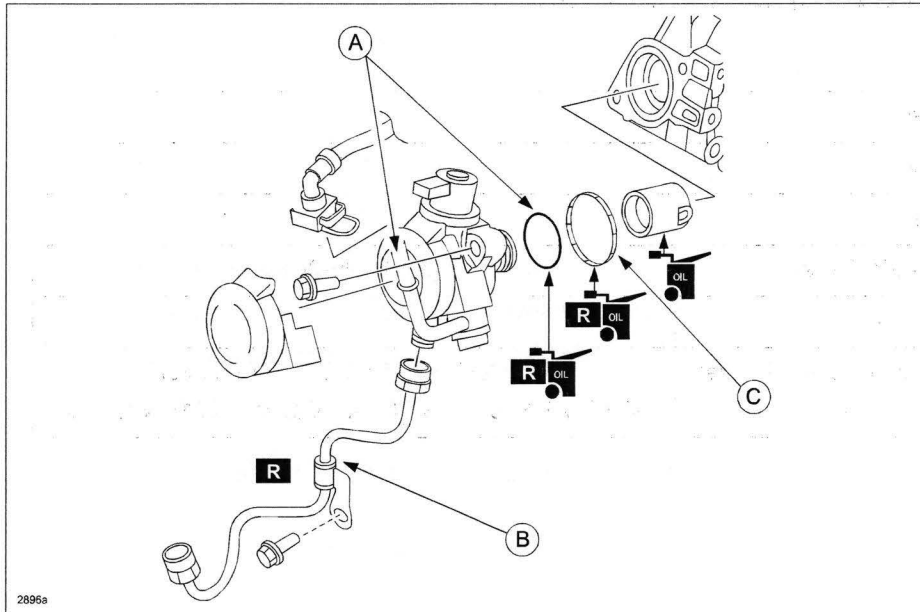
This is caused by the high pressure fuel pump not generating the target fuel pressure (due to a manufacturing error of the inner parts). To correct the problem, production control has been improved.

Customers having this concern should have their vehicle repaired using the following repair procedure.

CONSUMER NOTICE: The information and instructions in this bulletin are intended for use by skilled technicians. Mazda technicians utilize the proper tools/equipment and take training to correctly and safely maintain Mazda vehicles. These instructions should not be performed by "do-it-yourselfers." Customers should not assume this bulletin applies to their vehicle or that their vehicle will develop the described concern. To determine if the information applies, customers should contact their nearest authorized Mazda dealership. Mazda North American Operations reserves the right to alter the specifications and contents of this bulletin without obligation or advance notice. All rights reserved. No part of this bulletin may be reproduced in any form or by any means, electronic or mechanical—including photocopying and recording and the use of any kind of information storage and retrieval system—without permission in writing.

REPAIR PROCEDURE

1. Verify customer concern.
2. Replace the high pressure fuel pump with a modified one according to the Workshop Manual.
3. Replace the high pressure fuel pump (A: fuel pump; B: fuel pipe; C: rubber seal) with a modified one according to the instructions on MS3 online or the Workshop Manual (section 01-14 HIGH PRESSURE FUEL PUMP REMOVAL/INSTALLATION).



4. Verify repair.

PART(S) INFORMATION

Part Number	Description	Qty.	Notes
PE18-20-3F0	Fuel Pump	1	All models
PE01-13-290D	Fuel Pipe	1	2.0L
PY01-13-290A		1	2.5L
PE01-13-555	Rubber Seal	1	All models

WARRANTY INFORMATION

NOTE:

- This warranty information applies only to verified customer complaints on vehicles eligible for warranty repair.
- This repair will be covered under Mazda's Federal Emission Warranty (long term) or CA PZEV Emission Warranty.
- Additional diagnostic time cannot be claimed for this repair.

Warranty Type	A
Symptom Code	6X
Damage Code	9W
Part Number Main Cause	PE18-20-3F0
Quantity	1
Operation Number / Labor Hours:	XXK61ARX/ 1.0 Hrs. (2012-13 Mazda3) XXK61ARX/ 0.8 Hrs. (CX-5, Mazda6, 2014 Mazda3)