

Tony Lawrence

From: Christopher Ciz
Sent: Monday, April 07, 2014 3:50 PM
To: All Dirs All Rgns - PT; All Dirs All Rgns - SR
Subject: MAZDA DEALER NOTICE - SERVICE BULLETIN RELEASE

SERVICE BULLETIN RELEASE - 04/07/2014

2014 INDEX: http://www.mstore2000.com/PDF_Files/index04-07-14.pdf

The following Service Bulletin has just been issued.

- For latest MS3 postings, click here: <https://portal.mazdausa.com/m173/service/esi/MazdaServiceShop>

- For printable PDF files from MStore, click on the link below each TSB title:

* If the links do not automatically take you directly to the document, cut and paste the link into your internet browser address window and press enter.

NEW BULLETINS

01-010/14 – MULTI-MODEL (WITH SKYACTIV 2.0L/2.5L) - MIL ON WITH DTC P0191:00

http://www.mstore2000.com/PDF_Files/01-010-14-2896.pdf

09-020/14 – MULTI-MODEL - TOMTOM NAVIGATION FUNCTIONALITY CONCERNS AFTER MSP42

http://www.mstore2000.com/PDF_Files/09-020-14-2913.pdf

UPDATED BULLETIN

01-009/14 – MULTI-MODEL (WITH SKYACTIV) - ROUGH IDLE WITH MIL ON AND DTC P0015 / P0524

http://www.mstore2000.com/PDF_Files/01-009-14-2909.pdf

- Please distribute this information to all parts and service personnel.
- **If you no longer wish to receive Mazda bulletins, please contact the IT Administrator at your dealership and ask them to remove your email address from under the EMDCS application.**

© 2014 Mazda Motor of America, Inc.

Subject: MIL ON WITH DTC P0191:00	Bulletin No: 01-010/14
	Last Issued: 04/07/2014

APPLICABLE MODEL(S)/VINS

2012-13 Mazda3 (with SKYACTIV 2.0L)

2013-14 CX-5 vehicles with VINs lower than JM3KE*****420619 (produced before December 1, 2013)

2014 Mazda3 vehicles with VINs lower than JM1BM*****154277 (produced before December 1, 2013)

2014 Mazda6 vehicles with VINs lower than JM1GJ*****162756 (produced before December 1, 2013)

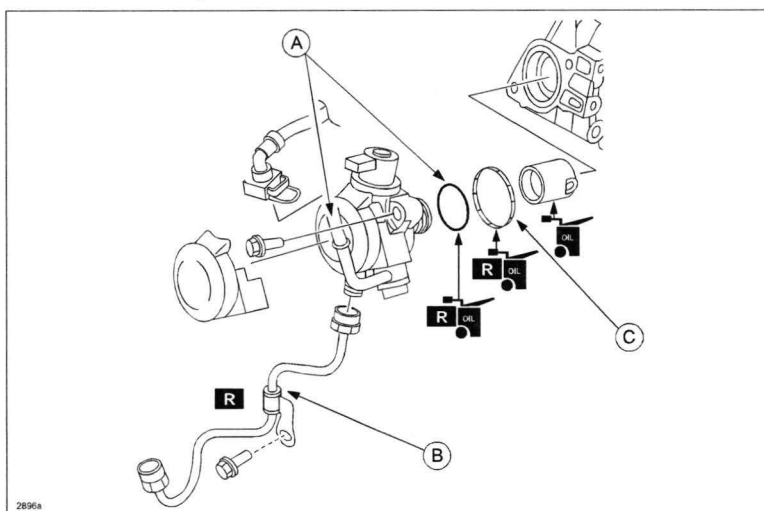
DESCRIPTION

Some vehicles may experience the MIL on with DTC P0191:00 (Fuel pressure sensor circuit range/performance problem) stored in memory. This is caused by the high pressure fuel pump not generating the target fuel pressure (due to a manufacturing error of the inner parts). To correct the problem, production control has been improved.

Customers having this concern should have their vehicle repaired using the following repair procedure.

REPAIR PROCEDURE

1. Verify customer concern.
2. Replace the high pressure fuel pump with a modified one according to the Workshop Manual.
3. Replace the high pressure fuel pump (A: fuel pump; B: fuel pipe; C: rubber seal) with a modified one according to the instructions on MS3 online or the Workshop Manual (section 01-14 HIGH PRESSURE FUEL PUMP REMOVAL/INSTALLATION).



4. Verify repair.

Bulletin No: 01-010/14 © 2014 Mazda Motor of America, Inc.	Last Issued: 04/07/2014
----------------------------------------------------------------------	--------------------------------

PART(S) INFORMATION

Part Number	Description	Qty.	Notes
PE18-20-3F0	Fuel Pump	1	All models
PE01-13-290D	Fuel Pipe	1	2.0L
PY01-13-290A		1	2.5L
PF01-13-555	Rubber Seal	1	All models

WARRANTY INFORMATION

NOTE:

- This warranty information applies only to verified customer complaints on vehicles eligible for warranty repair.
- This repair will be covered under Mazda's Federal Emission Warranty (long term) or CA PZEV Emission Warranty.
- Additional diagnostic time cannot be claimed for this repair.

Warranty Type	A
Symptom Code	6X
Damage Code	9W
Part Number Main Cause	PE18-20-3F0
Quantity	1
Operation Number / Labor Hours:	X XK61ARX/ 1.0 Hrs. (2012-13 Mazda3) X XK61ARX/ 0.8 Hrs. (CX-5, Mazda6, 2014 Mazda3)