



HYUNDAI | NEW THINKING.
NEW POSSIBILITIES.

Technical Service Bulletin

GROUP
ELECTRICAL

NUMBER
14-BE-012

DATE
JULY 2014

MODEL
SONATA (YF)

SUBJECT: BLUE LINK REMOTE START DEALER TROUBLESHOOTING GUIDE

Description:

This bulletin provides information to assist in the diagnosis of the Blue Link Remote Start feature on the 2011-2014 MY Sonata (YF). Please refer to the provided flow charts for more details.

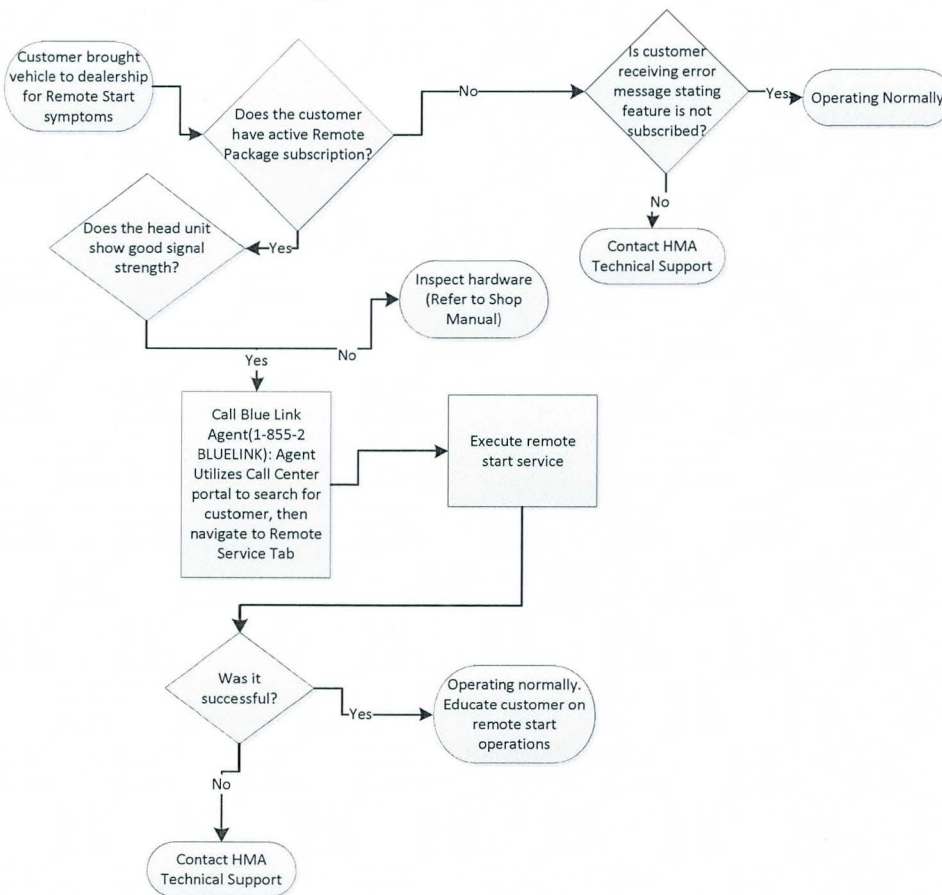
Applicable Vehicles:

- All Sonata 2011-2014 MY YF Models Equipped with Smart Key

Warranty Information:

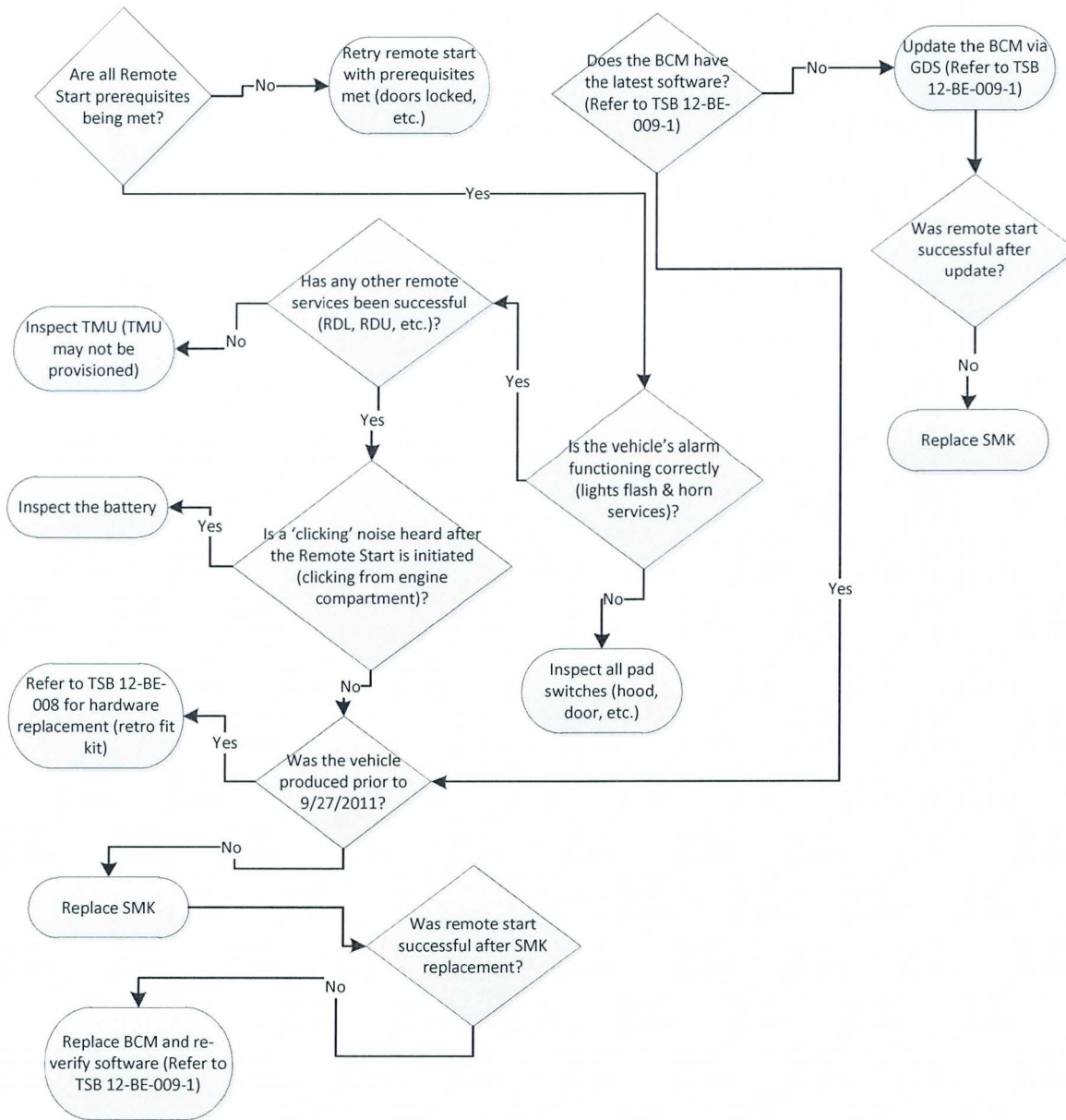
Normal warranty applies.

General Troubleshooting Flow Chart:



SUBJECT: BLUE LINK REMOTE START TROUBLESHOOTING GUIDE

Detailed Troubleshooting Flow Chart (Techline Support):



★ IMPORTANT

Make sure you have the most recent GDS and VCI updates.