

|   |                               |  |
|---|-------------------------------|--|
|  <b>HYUNDAI</b>   NEW THINKING.<br>NEW POSSIBILITIES.<br><br><b>Technical Service Bulletin</b> | <b>GROUP</b>                  | <b>NUMBER</b>  |
|   | <b>AUTOMATIC TRANSMISSION</b> | <b>14-AT-001</b>                                       |
|   | <b>DATE</b>                   | <b>MODEL</b>   |
|   | <b>JANUARY 2014</b>           | GENESIS SEDAN (BH)<br>GENESIS COUPE (BK)<br>EQUUS (VI) |
| <b>SUBJECT      AUTOMATIC TRANSMISSION TCM UPDATE – DTC P0841</b>   |                               |  |



**ECU Update**

**DESCRIPTION:**

This bulletin provides a procedure to update the TCM software for certain Genesis Sedan (BH), Genesis Coupe (BK) and Equus (VI) vehicles for the following DTC:

| DTC   | DESCRIPTION   |
|-------|---|
| P0841 | Transmission Fluid Pressure Sensor/Switch A Circuit Range/Performance |

**APPLICABLE VEHICLES:**

| MODEL YEAR | MODEL                       | APPLICABLE PRODUCTION DATE           |
|------------|-----------------------------|--------------------------------------|
| 2012~13    | Genesis Sedan (BH) with 8AT | January 26, 2011 through May 8, 2013 |
| 2013       | Genesis Coupe (BK) with 8AT | June 27, 2011 through May 15, 2013   |
| 2012~14    | Equus (VI) with 8AT         | July 4, 2011 through April 14, 2013  |

**NOTE:** There are no vehicle performance issues associated with this update.

**GDS INFORMATION:**

| EVENT # | DESCRIPTION                           |
|---------|---------------------------------------|
| 309     | 309.BH 8AT TCM P0841 DTC LOGIC CHANGE |
| 310     | 310.VI 8AT TCM P0841 DTC LOGIC CHANG  |
| 311     | 311.BK 8AT TCM P0841 DTC LOGIC CHANGE |

**WARRANTY INFORMATION:**

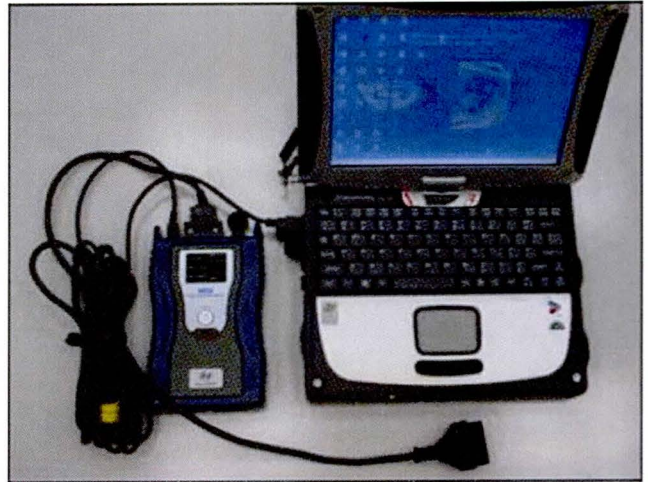
| MODEL  | OP CODE  | OP NAME     | OP TIME | CAUSAL P/N       | NATURE | CAUSE |
|--|----------|-------------|---------|------------------|--------|-------|
| Genesis Sedan (BH)<br>Genesis Coupe (BK)<br>Equus (VI) | 95440F77 | TCM UPGRADE | 0.3     | See ROM ID table | N69    | C40   |

## ROM ID INFORMATION: Verify the PCM ROM ID before updating the vehicle software.

| MODEL                       | ENGINE            | T/M TYPE | 8LR/C | PREVIOUS    |  | NEW         |            |
|-----------------------------|-------------------|----------|-------|-------------|--|-------------|------------|
|                             |                   |          |       | TCM P/N     | TCM ROM ID   | TCM P/N     | TCM ROM ID |
| GENESIS<br>SEDAN<br>(BH)    | Lambda<br>3.8 GDI | A8LR1    | NO    | 95440-4F220 | TBH0Z38NA0<br>TBH0Z38NA1<br>TBH0Z38NA2<br>TBH0Z38NA3<br>TBH0Z38NA4<br>TBH0Z38NA5<br>TBH0Z38NA6 | 95440-4F220 | TBH0G38N1A |
|                             |                   |          | YES   | 95440-4F221 | TBH0Z38NA7<br>TBH0Z38NA8<br>TBH0Z38NA9   | 95440-4F222 | TBH0G38NB1 |
|                             | Tau<br>4.6 MPI    | A8TR1    | NO    | 95440-4E220 | TBH0C46NA0<br>TBH0C46NA1<br>TBH0C46NA2<br>TBH0C46NA3<br>TBH0C46NA4                             | 95440-4E220 | TBH0M46N1A |
|                             |                   |          | YES   | 95440-4E221 | TBH0C46NA5   | 95440-4E221 | TBH0M46N10 |
|                             | Tau<br>5.0 GDI    | A8TR1    | NO    | 95440-4E200 | TBH0Z50NA0<br>TBH0Z50NA1<br>TBH0Z50NA2<br>TBH0Z50NA3<br>TBH0Z50NA4<br>TBH0Z50NA5<br>TBH0Z50NA6 | 95440-4E200 | TBH0G50N1A |
|                             |                   |          | YES   | 95440-4E201 | TBH0Z50NA7<br>TBH0Z50NA8<br>TBH0Z50NA9   | 95440-4E202 | TBH0G50NB1 |
| EQUUS<br>(VI)               | Tau<br>5.0 GDI    | A8TR1    | NO    | 95440-4E410 | TVI0Z50NA0<br>TVI0Z50NA1<br>TVI0Z50NA2<br>TVI0Z50NA3<br>TVI0Z50NA4                             | 95440-4E410 | TVI0G50N1A |
|                             |                   |          | YES   | 95440-4E411 | TVI0Z50NA5<br>TVI0Z50NA6<br>TVI0Z50NA7   | 95440-4E411 | TVI0G50N10 |
| EQUUS<br>(VI FL)            | Tau<br>5.0 GDI    | A8TR1    | YES   | 95440-4EBC0 | TVI0G50NH1<br>TVI0G50NH2   | 95440-4EBC0 | TVI0G50NH3 |
| GENESIS<br>COUPE<br>(BK FL) | Theta<br>2.0      | A8LR1    | NO    | 95440-4F030 | TBK0C20NC0<br>TBK0C20NC1   | 95440-4F030 | TBK0M20N1A |
|                             |                   |          | YES   | 95440-4F031 | TBK0C20NC2<br>TBK0C20NC3<br>TBK0C20NC4<br>TBK0C20NC5   | 95440-4F032 | TBK0M20NH1 |
|                             | Lambda<br>3.8 GDI | A8LR1    | NO    | 95440-4F120 | TBK0Z38NC0   | 95440-4F120 | TBK0G38N1A |
|                             |                   |          | YES   | 95440-4F121 | TBK0Z38NC1<br>TBK0Z38NC2<br>TBK0Z38NC3<br>TBK0Z38NC4<br>TBK0Z38NC4                             | 95440-4F122 | TBK0G38NH1 |

### GENERAL PRECAUTIONS

- Connect the USB cable between the GDS and the VCI.
- Connect the 16-pin DLC connector from the VCI into the DLC located under the driver's side dash.



#### **NOTICE**

**Make sure the battery icon at the bottom right of the GDS laptop shows at least 50%; if not, charge the GDS or attach a battery charger.**

- Turn off all lights (Do not leave the headlight switch in auto mode) and all accessories (including heater/air conditioner/fan, audio, heated seats, rear defroster, etc) to ensure the battery will not be discharged during the update.
- Perform the update with the ignition key in the ON position. (Turn the ignition key to the ON position or press the Start-Stop Button two times without depressing the brake pedal).
- Do not disconnect any cables connected to the vehicle or the GDS during the update.
- Do not start the engine or turn the ignition switch OFF during the update.

#### **NOTICE**

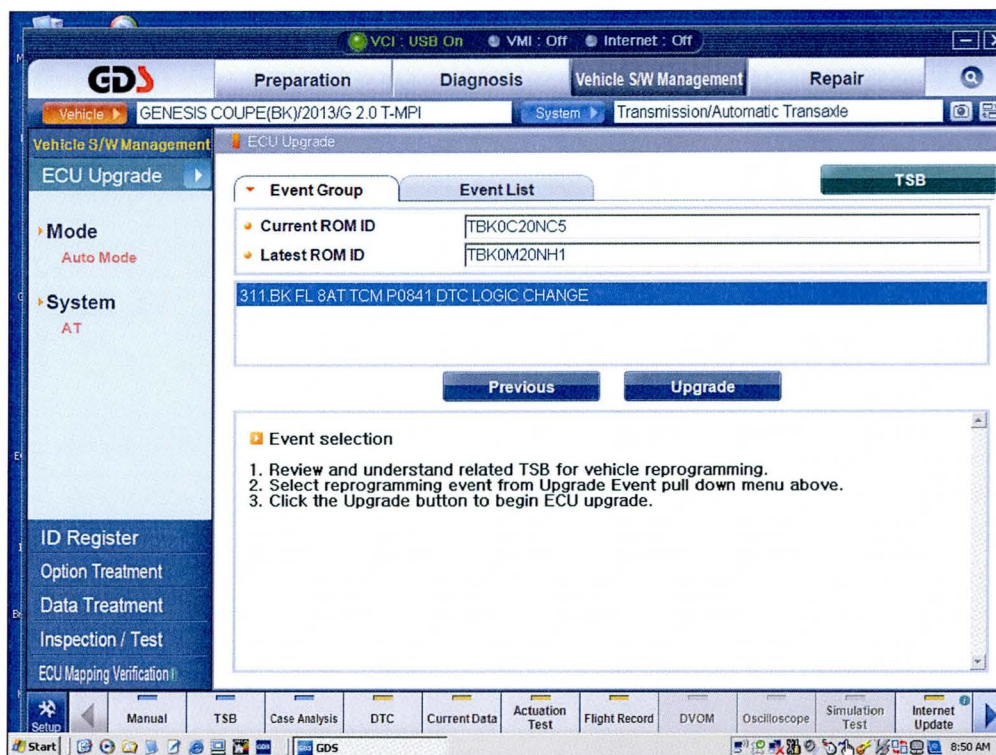
**Confirm your GDS has the most recent version. If not, connect the GDS to an Internet port, open the GDS home page and select "Update". Refer to instructions on [hmaservice.com](http://hmaservice.com) if necessary.**

#### **NOTICE**

**If you encounter GDS related problems, call the GIT Helpline at 888-437-0308.**

GDS AUTO MODE TCM UPDATE PROCEDURE

1. From the GDS home page, select **ECU Upgrade**. If necessary, select the VIN.
2. Select **AT** as the system and then select **OK**.
3. Select **Auto Mode** and then select **Next**.
4. From the **System** tab, select **AT** and then select **OK**. The GDS will read the ROM ID. Confirm the ROM is applicable as shown on Page 1, "ROM ID Information".
5. One of the following update events will display. Select the appropriate update event and select **Upgrade**.
  - 309.BH 8AT TCM P0841 DTC LOGIC CHANGE
  - 310.VI 8AT TCM P0841 DTC LOGIC CHANGE
  - 311.BK 8AT TCM P0841 DTC LOGIC CHANGE



6. If the screen indicates "**Voltage is OK**", select **OK**. If not, select **CANCEL** and charge the vehicle battery by running the engine for 10 minutes.
7. Updating will occur until 100% is reached on the bar graph. At the prompt, turn the ignition key OFF for 10 seconds, then turn it ON and select **OK**.
8. The GDS will confirm that TCM reprogramming is successfully finished. Select **OK**.
9. If the TCM update was not successful, go to **GDS MANUAL MODE TCM UPDATE**.
10. Check for Diagnostic Trouble Codes and erase any DTC.
11. Erase the DTC in the BlueLink system according to TSB 12-BE-005-2
12. Reset the automatic transmission adaptive values using A/T menu and "Option Treatment"

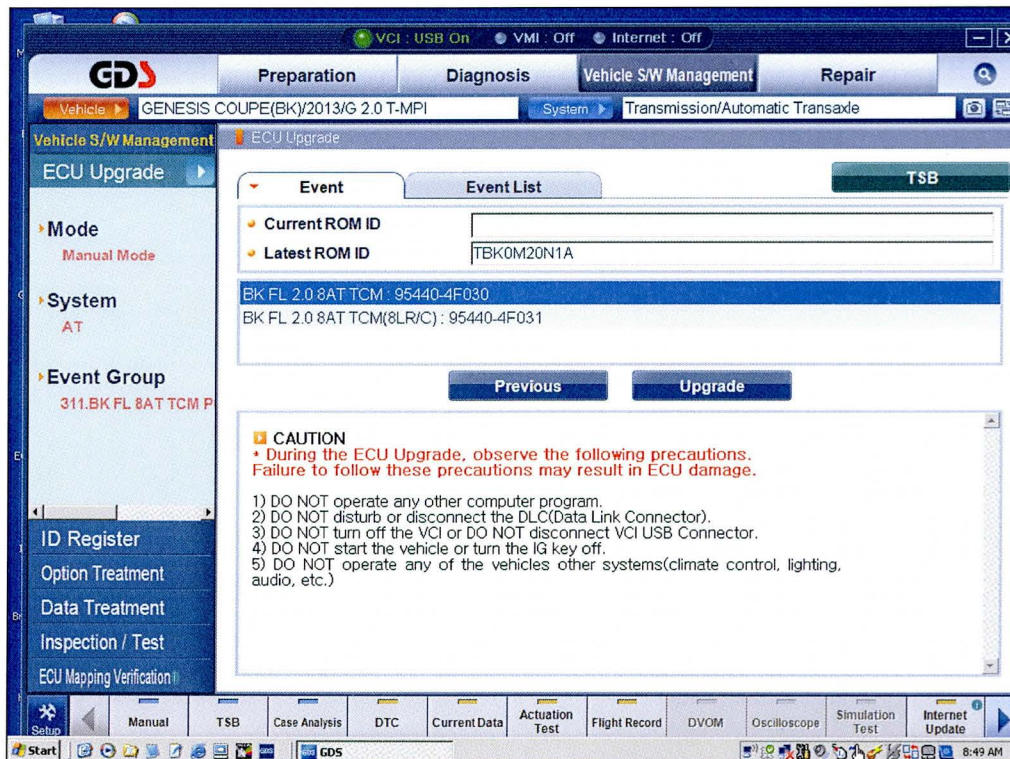
GDS MANUAL MODE TCM UPDATE PROCEDURE

**NOTICE**

In the event of AUTO MODE update failure (after the progress bar was initiated):

- You must attempt MANUAL MODE. Use the ECM P/N from the vehicle's ECM label if the correct ECM P/N is not clear from the ROM ID table.
- Replacing an ECM without carefully documenting that a MANUAL MODE update attempt was made will result in a charge back of your claim.

1. From the GDS home page, select **ECU Upgrade**. If necessary, select the VIN.
2. Select **AT** as the system and then select **OK**.
3. Select **Manual Mode** and then select **NEXT**.
4. From the **System** tab, select **AT** and then select **NEXT**.
5. Event #309, #310 or #311 will display. Select the appropriate event and select **Next**.
6. Select the appropriate TCM part number with reference to the ROM ID Information Table and select **Upgrade**. If you do not know the TCM part number, select **A/T** menu, **Option Treatment** and **System Identification**.



7. Enter the Password and click **OK**. The part number can be found on the TCM label.

**#309.BH – Genesis Sedan:**

| MENU                                    | PASSWORD |
|---|----------|
| BH 3.8 GDI 8AT TCM : 95440-4F220        | 4220     |
| BH 3.8 GDI 8AT TCM(8LR/C) : 95440-4F221 | 4221     |
| BH 4.6 MPI 8AT TCM : 95440-4E220        | 4222     |
| BH 4.6 MPI 8AT TCM(8LR/C) : 95440-4E221 | 4223     |
| BH 5.0 GDI 8AT TCM : 95440-4E200        | 4200     |
| BH 5.0 GDI 8AT TCM(8LR/C) : 95440-4E201 | 4201     |

**#310.VI – Equus**

| MENU                                       | PASSWORD |
|--|----------|
| VI 5.0 GDI 8AT TCM : 95440-4E410           | 4410     |
| VI 5.0 GDI 8AT TCM(8LR/C) : 95440-4E411    | 4411     |
| VI FL 5.0 GDI 8AT TCM(8LR/C) : 95440-4EBC0 | 4040     |

**#311.BK – Genesis Coupe**

| MENU                                       | PASSWORD |
|--|----------|
| BK FL 2.0 8AT TCM : 95440-4F030            | 4030     |
| BK FL 2.0 8AT TCM(8LR/C) : 95440-4F031     | 4031     |
| BK FL 3.8 GDI 8AT TCM : 95440-4F120        | 4120     |
| BK FL 3.8 GDI 8AT TCM(8LR/C) : 95440-4F121 | 4121     |

8. The remaining steps are the same as Step 7~12 of the Auto Procedure.