

Seat Heater Element Twisted/Bunched

Service Category Vehicle Interior

Section Seat

Market USA

Toyota Supports
ASE Certification 

Applicability

YEAR(S)	MODEL(S)	ADDITIONAL INFORMATION
2013 – 2014	Avalon HV	Body Type(s): 4Dr. Sedan Drive Type(s): 2WD Engine(s): 2AR Plant Code(s): U Transmission(s): CVT VDS(s): BD1EB WMI(s): 4T1
2013 – 2014	Avalon	Body Type(s): 4Dr. Sedan Drive Type(s): 2WD Engine(s): 2GR Plant Code(s): U Transmission(s): 6AT VDS(s): BK1EB WMI(s): 4T1

Introduction

Some 2013 – 2014 model year Avalon and Avalon HV vehicles may exhibit a condition where the surface of the driver's seat bottom outer bolster is not even (has a ridge/bulge in it) or where the bottom outer edge of the driver's seat is uncomfortable.

Both conditions are caused by the seat heater element twisting or bunching up in the concerned area.

Follow the Repair Procedure in this bulletin to address both conditions listed above.

Production Change Information

This bulletin applies to the following vehicles:

- All TMMK built (WMI = 4T1) 2013 model year Avalon and Avalon HV Limited Grade vehicles.
- TMMK built (WMI = 4T1) 2014 model year Avalon and Avalon HV Limited Grade vehicles produced **BEFORE** the Production Change Effective VINs shown below.

MODEL	DRIVETRAIN	PLANT	PRODUCTION CHANGE EFFECTIVE VIN
Avalon	2WD	TMMK (Line 1)	4T1BK1EB#EU121091
Avalon HV			4T1BD1EB#EU031110

Seat Heater Element Twisted/Bunched

Warranty Information

OP CODE	DESCRIPTION	TIME	OFF	T1	T2
BD1416	Front Seat Cushion, CVR (One Side)	1.3	87510-07021	67	13
BD1416A	Other Side	1.3			

APPLICABLE WARRANTY

- This repair is covered under the Toyota Basic Warranty. This warranty is in effect for 36 months or 36,000 miles, whichever occurs first, from the vehicle's in-service date.
- Warranty application is limited to occurrence of the specified condition described in this bulletin.

Parts Information

PART NUMBER		PART NAME	QTY
PREVIOUS	NEW		
87510-07021	87510-07022	Heater Assembly, Seat	1 – 2*
	90468-18008 90468-16019	Hog Rings	18 – 36*

* This issue has only been discovered on the LH/driver's seat. However, if it is also occurring on the RH/passenger's seat, please complete repair on both seat assemblies.

Required Tools & Equipment

REQUIRED EQUIPMENT	SUPPLIER	PART NUMBER	QTY
Techstream 2.0*	ADE	TS2UNIT	1
Techstream Lite		TSLITEPDLR01	

* Essential SST.

NOTE

- Only ONE of the Techstream units listed above is required.
- Software version 9.10.037 or later is required.
- Additional Techstream units may be ordered by calling Approved Dealer Equipment (ADE) at 1-800-368-6787.

REQUIRED MATERIAL	QUANTITY
Hog Ring Pliers	1

Seat Heater Element Twisted/Bunched

Required Tools & Equipment (Continued)

SPECIAL SERVICE TOOLS (SST)	PART NUMBER	QTY
Seat Heater Attachment Kit*	00002-01775	1
Plastic Pry Tool Kit*	00002-06020-01	1
Occupant Classification Seat Weight Set*	00002-09090-01	1

* Essential SST.

NOTE

Additional SSTs may be ordered by calling 1-800-933-8335.

Repair Procedure

1. Remove the front seat cushion heater element.

Refer to the Technical Information System (TIS), applicable model and model year Repair Manual:

- [2013 / 2014 Avalon](#):
Vehicle Interior – Seat – “Seat: Front Seat Cushion Heater: Removal”
- [2013 / 2014 Avalon HV](#):
Vehicle Interior – Seat – “Seat: Front Seat Cushion Heater: Removal”

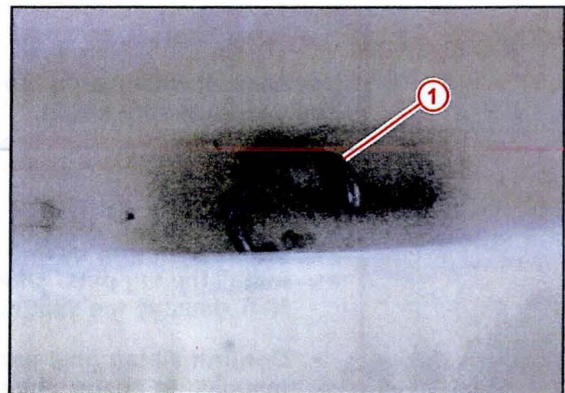
NOTICE

While disassembling the seat assembly, do NOT damage and/or soil the seat.

CAUTION

To prevent seat damage and potential injury, ensure all the clipped Hog Rings are removed.

Figure 1.



1 Remove Clipped Hog Rings

Seat Heater Element Twisted/Bunched

Repair Procedure (Continued)

2. Install a NEW front seat cushion heater element.

Refer to TIS, applicable model and model year Repair Manual:

- [2013 / 2014 Avalon](#):
Vehicle Interior – Seat – “Seat: Front Seat Cushion Heater: Installation”
- [2013 / 2014 Avalon HV](#):
Vehicle Interior – Seat – “Seat: Front Seat Cushion Heater: Installation”

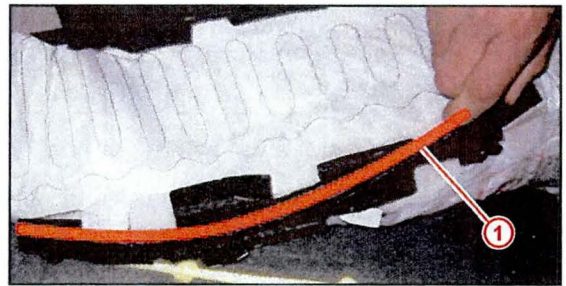
NOTICE

While installing seat covers, do NOT bend the hog ring anchor rods.

NOTE

Ensure all 22 tabs of seat heater element are attached to seat cover (NEW level parts have an additional two tabs).

Figure 2.



1 Do NOT Bend Hog Ring Anchor Rod

NOTE

Always install the seat heater so that the copper wires face the seat cover.

- Confirm the seat heater is installed with the copper wires facing the seat cover.
- Never install the heater with the copper wires facing the cushion.

CAUTION

Use caution when using the tag pin gun. The needle is very sharp.

NOTICE

- The tag pin gun uses a needle to install the tag pins. Use caution to NOT damage the seat cover.
- Confirm all tag pins are securely installed to ensure the seat heater stays in the correct position.

Figure 3.



Seat Heater Element Twisted/Bunched

Repair Procedure (Continued)

3. Confirm that the seat covers are installed correctly and are not bunched up or crooked.
4. Confirm the operation of all seat functions.
5. If the passenger seat is removed, perform passenger seat zero point calibration/sensitivity check.

Refer to TIS, applicable model and model year Repair Manual:

- [2013](#) / [2014](#) Avalon:
Vehicle Interior – Supplemental Restraint Systems– “Supplemental Restraint Systems: Occupant Classification System: Initialization”
- [2013](#) / [2014](#) Avalon HV:
Vehicle Interior – Supplemental Restraint Systems– “Supplemental Restraint Systems: Occupant Classification System: Initialization”