

Fuel Door Difficult to Open

Service Category Engine/Hybrid System

Section Fuel System

Market USA

Toyota Supports
 ASE Certification 

Applicability

YEAR(S)	MODEL(S)	ADDITIONAL INFORMATION
2013 – 2014	Avalon HV	Body Type(s): 4Dr. Sedan Drive Type(s): 2WD Engine(s): 2AR Plant Code(s): U Transmission(s): CVT VDS(s): BD1EB WMI(s): 4T1
2013 – 2014	Avalon	Body Type(s): 4Dr. Sedan Drive Type(s): 2WD Engine(s): 2GR Plant Code(s): U Transmission(s): 6AT VDS(s): BK1EB WMI(s): 4T1

Introduction

Some 2013 – 2014 model year Avalon and Avalon HV vehicles may exhibit a condition where excessive force is required to open the fuel door lid, or the fuel filler opening stopper in the fuel door assembly cannot be depressed enough to release the fuel door. Follow the Repair Procedure in this bulletin to address this condition.

NOTE

This Service Bulletin is NOT for the condition of the Fuel Filler Opening Stopper becoming stuck in the closed position.

Fuel Door Difficult to Open

Production Change Information

This bulletin applies to:

- ALL 2013 model year TMMK built Avalon and Avalon HV vehicles.
- 2014 model year TMMK built Avalon and Avalon HV vehicles produced **BEFORE** the Production Change Effective VINs shown below.

MODEL	PLANT	DRIVETRAIN	ENGINE	PRODUCTION CHANGE EFFECTIVE VIN
Avalon	TMMK	2WD	2GR-FE	4T1BK1EB#EU078028
Avalon HV			2AR-FXE	4T1BD1EB#EU018752

Warranty Information

OP CODE	DESCRIPTION	TIME	OFF	T1	T2
BD1418	Fuel Filler Opening Lid Assy	0.2	77305-07020	9A	83

APPLICABLE WARRANTY

- This repair is covered under the Toyota Basic Warranty. This warranty is in effect for 36 months or 36,000 miles, whichever occurs first, from the vehicle's in-service date.
- Warranty application is limited to occurrence of the specified condition described in this bulletin.

Parts Information

PART NUMBER	PART NAME	QTY
77358-07010	Stopper, Fuel Filler Opening Lid	1

Repair Procedure

1. Open the fuel door lid by pressing on the center of the rear edge of the fuel filler door.

NOTE

- Doors must be unlocked to open the fuel door lid.
- If the fuel filler door cannot be opened by pressing the rear edge of the fuel filler, remove the cover inside the trunk, and pull the lever to manually unlock the fuel filler door.

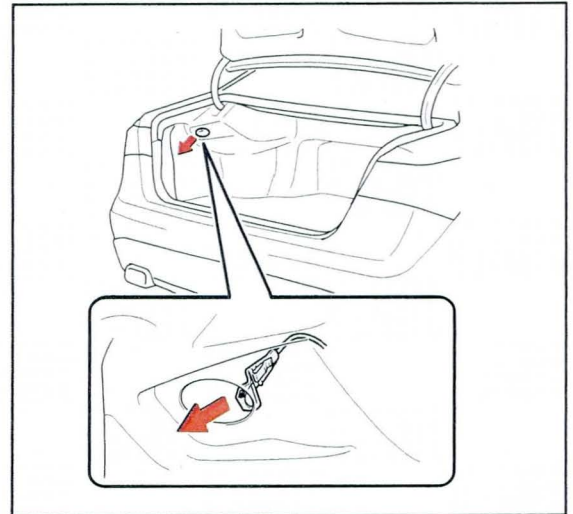
Figure 1.



Fuel Door Difficult to Open

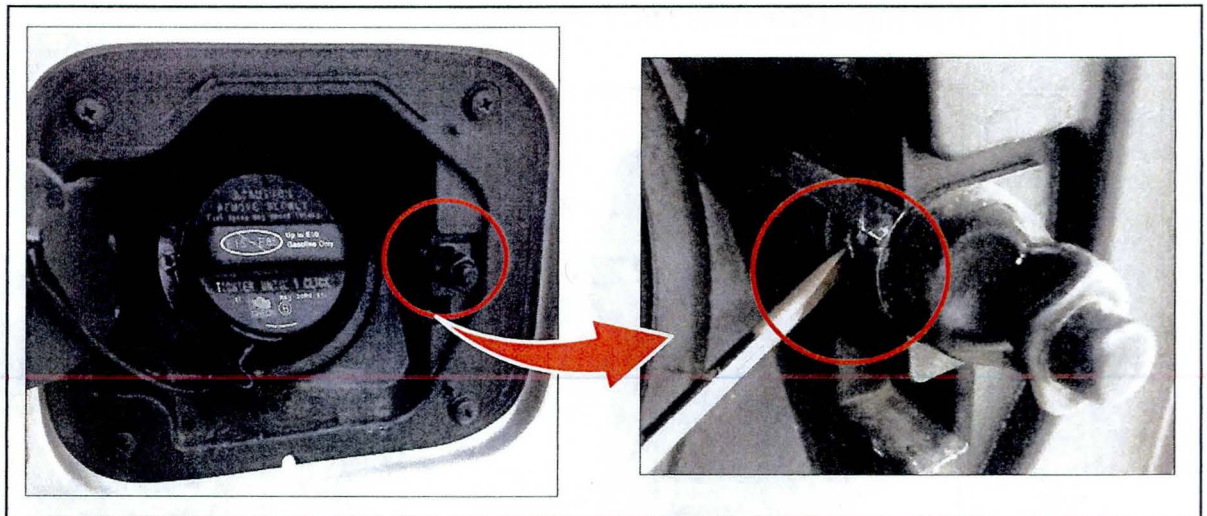
Repair Procedure (Continued)

Figure 2.



2. Use a small flathead screwdriver, or similar tool, to release the tab on the Fuel Filler Opening Stopper Assembly.

Figure 3.



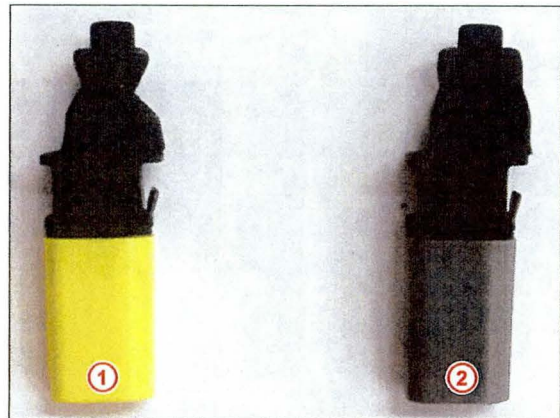
3. Remove the Fuel Filler Opening Stopper Assembly.

Fuel Door Difficult to Open

Repair Procedure (Continued)

4. Install the NEW Fuel Filler Opening Stopper Assembly.

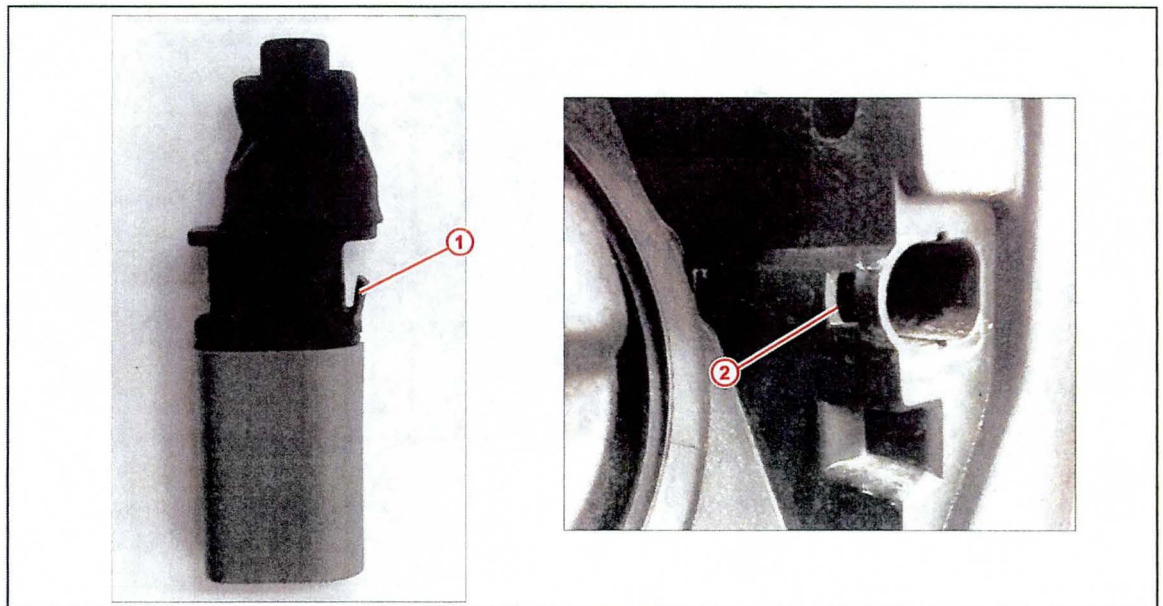
Figure 4.



1	OLD Part
2	NEW Part

- A. Line up the tab on the Fuel Filler Opening Stopper with the hole in fuel tank door assembly (tab should face toward front of vehicle).

Figure 5.



1	Tab on Fuel Filler Opening Stopper Assembly
----------	---

2	Hole in Fuel Tank Door Assembly
----------	---------------------------------

Fuel Door Difficult to Open

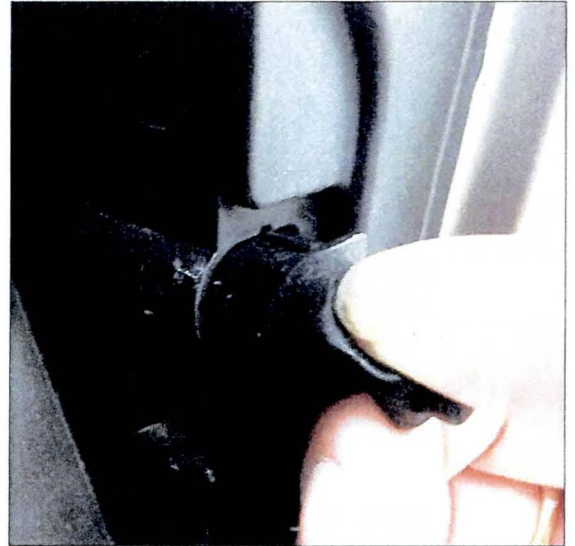
Repair Procedure (Continued)

- B. Push the Fuel Filler Opening Stopper Assembly all the way into position.

NOTE

Ensure the Fuel Filler Opening Stopper is fully installed and the tab is engaged.

Figure 6.



5. Verify operation of the fuel door assembly.