

Whistle Noise from Exterior Mirror

Service Category Vehicle Exterior

Section Mirror (ext)

Market USA

Toyota Supports
 ASE Certification 

Applicability

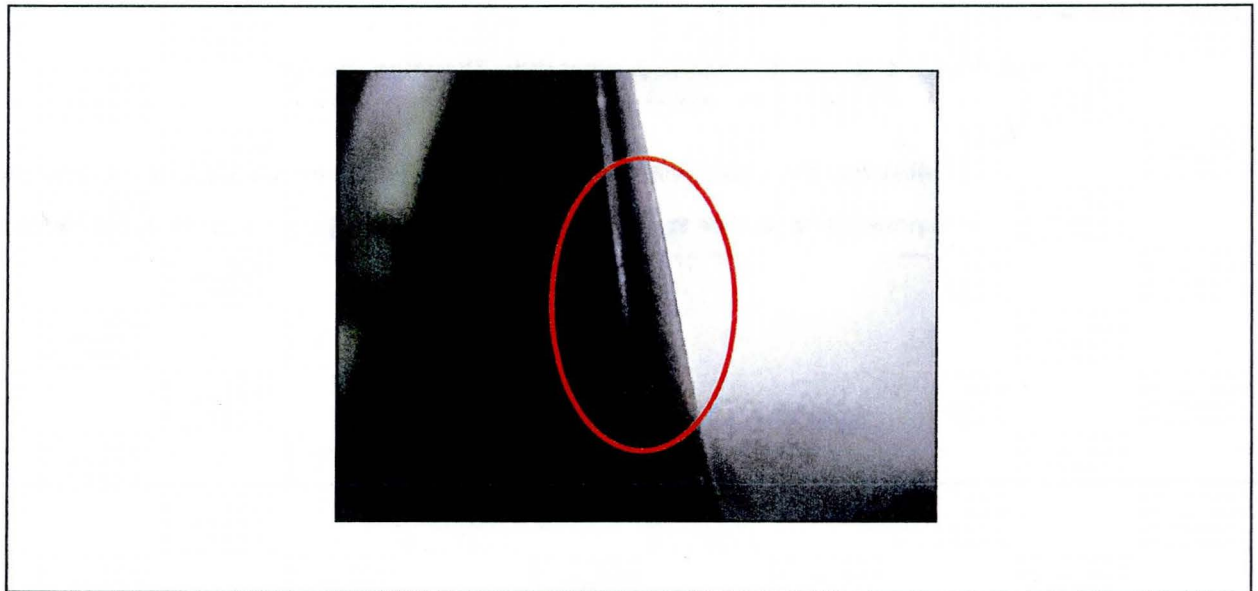
YEAR(S)	MODEL(S)	ADDITIONAL INFORMATION
2014	4Runner	

Introduction

Some 2014 model year 4Runner vehicles may exhibit a whistle noise coming from the mirror assembly while driving. A gap may be present at the inside corner of the outer mirror cover and mirror housing assembly junction.

Follow the procedure outlined below to address this condition.

Figure 1.



Production Change Information

MODEL	DRIVETRAIN	PRODUCTION CHANGE EFFECTIVE VIN
4Runner	2WD	JTEZU5JR#E5071887
	4WD	JTEBU5JR#E5168877

Whistle Noise from Exterior Mirror

Warranty Information

OP CODE	DESCRIPTION	TIME	OFF	T1	T2
BD1405	Insulate Mirror Assembly	0.4	87940-35B60 87910-35B90	59	57
Combo A	Opposite Side	0.2	87940-35B70 87910-35C00		

APPLICABLE WARRANTY

- This repair is covered under the Toyota Basic Warranty. This warranty is in effect for 36 months or 36,000 miles, whichever occurs first, from the vehicle's in-service date.
- Warranty application is limited to occurrence of the specified condition described in this bulletin.

Parts Information

PART NUMBER	PART NAME	QTY
08231-00810	Wind Noise Kit	1

Repair Procedure

1. Test drive the vehicle to confirm a noise from the mirror assembly.

NOTE

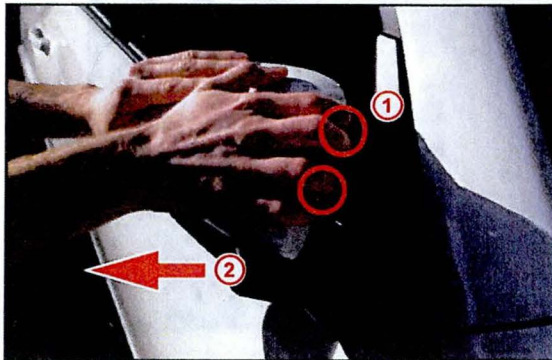
- Confirm that the noise from the outer mirror cover is not related to paint protection film.
- It is possible to service the outer mirror cover without disassembling the mirror assembly.

Whistle Noise from Exterior Mirror

Repair Procedure (Continued)

2. Remove the outer mirror cover.
 - A. Apply pressure from the front side of the outer mirror cover to disengage the clips.
 - B. Carefully pull the outer mirror cover away as shown below.

Figure 2.



1	Pressure Points
2	Pull Away Direction

Figure 3.



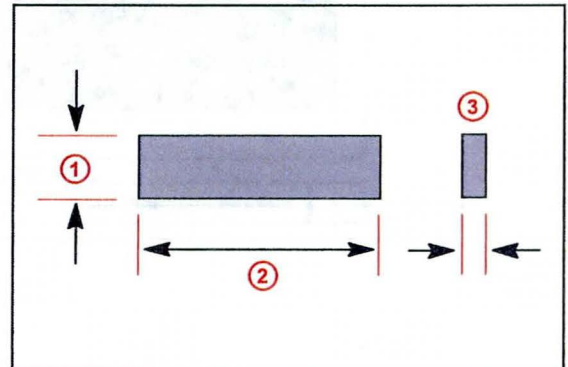
1	Outer Mirror Cover Clips
---	--------------------------

NOTICE

Use caution when removing the outer mirror cover as to NOT damage or drop the cover.

3. From the Wind Noise Kit, cut a section of felt to the following dimensions:
 - Length: 26 mm
 - Width: 10 mm
 - Thickness: 3 mm

Figure 4.



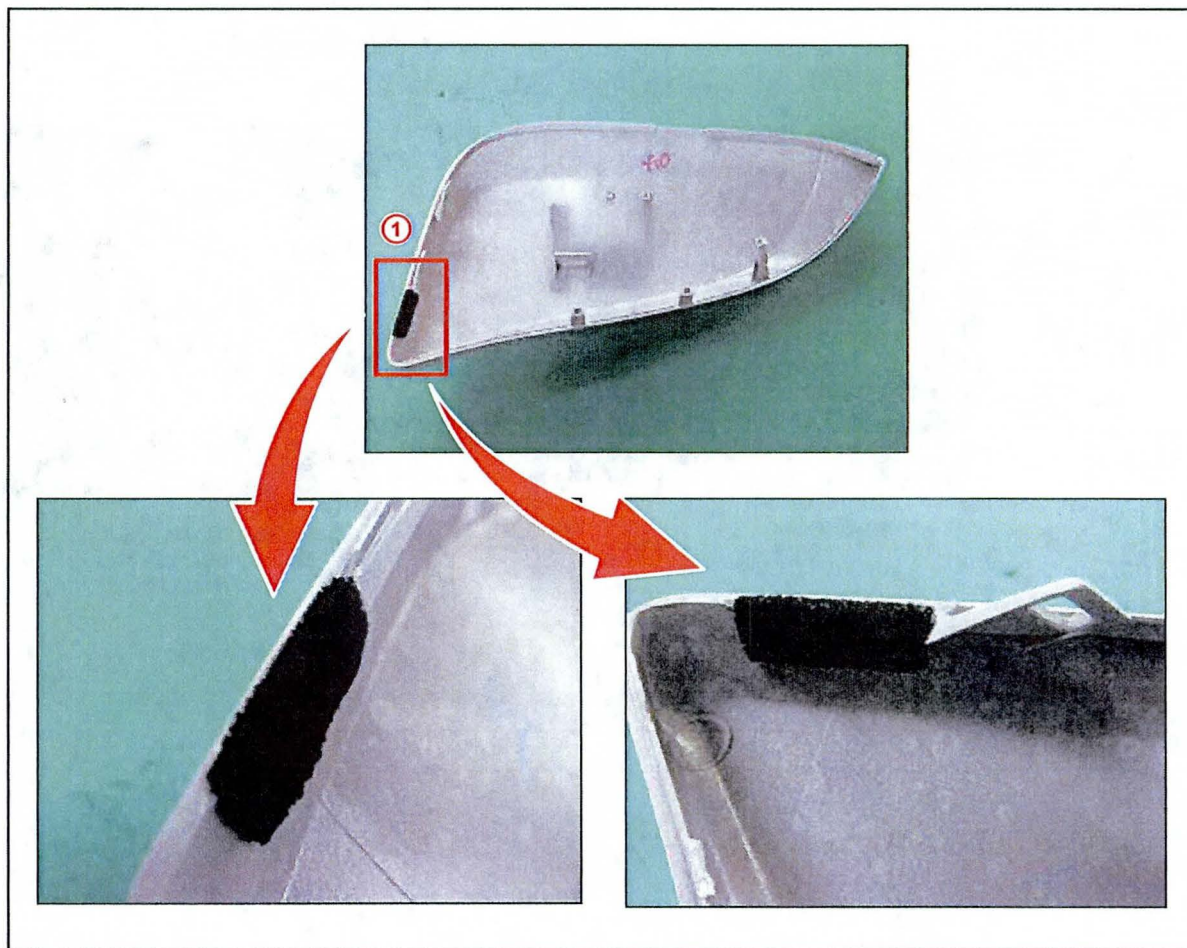
1	10 mm
2	26 mm
3	3 mm

Whistle Noise from Exterior Mirror

Repair Procedure (Continued)

4. Apply the felt to the outer mirror cover as shown.

Figure 5. Felt Location on Outer Mirror Cover (Driver Side)



1 Felt Installation Point

Whistle Noise from Exterior Mirror

Repair Procedure (Continued)

5. Reassemble the mirror by carefully aligning the clips at the circled locations and pressing until engagement.

HINT

Make sure the felt is not visible with the mirror installed.

Figure 6. Clip Locations on Outer Mirror Cover (Driver Side)

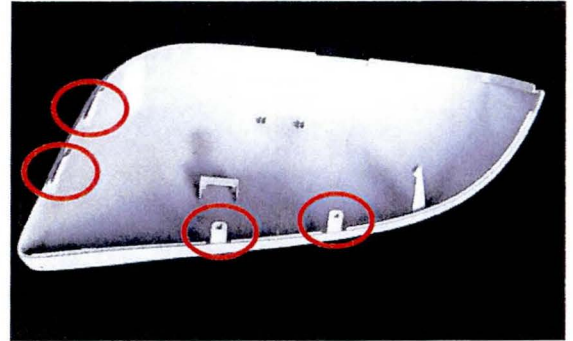
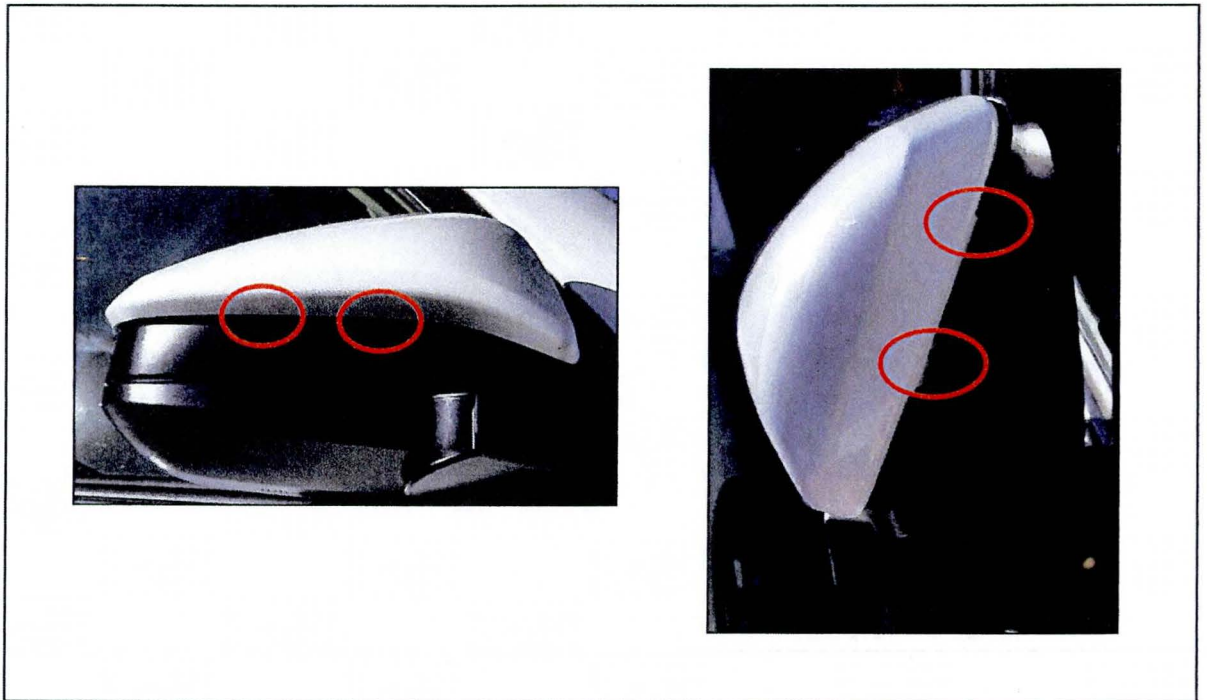


Figure 7. Installed Clip Locations on Outer Mirror Cover (Passenger Side)



6. Test drive the vehicle to confirm the whistle noise has been corrected.