


Excess Headlamp Moisture

Service
Category Vehicle Exterior

Section Lighting (ext)

Market USA

Lexus Supports
ASE Certification 

Applicability

YEAR(S)	MODEL(S)	ADDITIONAL INFORMATION
2004 – 2006	RX330	WMI(s): 2T2, JTJ
2007 – 2009	RX350	WMI(s): 2T2, JTJ
2006 – 2008	RX400H	WMI(s): JTJ

SUPERSESION NOTICE

The information contained in this bulletin supersedes SB No. L-SB-0008-10.

- The entire bulletin has been updated.

Service Bulletin No. L-SB-0008-10 is Obsolete and any printed versions should be discarded. Be sure to review the entire content of this bulletin before proceeding.

Introduction

While some condensation in the headlamp is normal and should be expected, certain 2004 – 2009 RX vehicles may exhibit a condition where excess moisture forms on the interior of the headlamp housing.

Examples of excess moisture are:

- Pooling of water at the bottom of the headlamp that do not clear with normal use of the vehicle in dry weather conditions.
- Noticeable streaks of water that run down the interior of the headlamp lenses that do not clear with normal use of the vehicle in dry weather conditions.

To address the excess moisture condition of the headlamp, an improved headlamp housing has been developed. Use the following repair information to replace the headlamp housing as necessary.

Excess Headlamp Moisture

Production Change Information

This bulletin applies to all 2004 – 2006 RX 330, 2007 – 2009 RX 350, and 2006 – 2008 RX 400h vehicles produced **BEFORE** the Production Change Effective VINs shown below.

MODEL	DRIVETRAIN	PLANT	PRODUCTION CHANGE EFFECTIVE VIN
RX 330	2WD	TMK	JTJGA31U#60065897
		TMMC	2T2GA31U#6C053399
	AWD	TMK	JTJHA31U#60106215
		TMMC	2T2HA31U#6C109798
RX 350	2WD	TMK	JTJGK####99853261
		TMMC	2T2GK####9C082087
	AWD	TMK	JTJHK####92859500
		TMMC	2T2HK####9C135374
RX 400h	2WD	TMK	JTJGW####82851829
	AWD		JTJHW####82867597

Warranty Information

OP CODE	DESCRIPTION	TIME	OFF	T1	T2
BD1409	R & R Headlamp Housing (One Side) (Used when old parts are transferred to a new housing)	1.3	811##-48### 811#0-0E0##	66	48
Combo A	Opposite Side (Headlamp Housing)	1.1			
BD1410	R & R Headlamp (One Side)	1.3			
Combo A	R & R Headlamp (Other Side)	1.1			
BD1411	R & R Headlamp & Computer (One Side)	1.3	811##-48### 811#0-0E0## 85967-51020		
BD1412	R & R Headlamp (Both Sides) & Computer (One Side)	2.4			
BD1413	R & R Headlamp (Both Sides) & Computer (Both Sides)	2.4			

APPLICABLE WARRANTY

- This repair is covered under the Lexus Basic Warranty. This warranty is in effect for 48 months or 50,000 miles, whichever occurs first, from the vehicle's in-service date.
- Warranty application is limited to occurrence of the specified condition described in this bulletin.

Excess Headlamp Moisture

Parts Information

The "Unit, Headlamp" part name in the following tables refers to a housing only and is not a complete assembly.

For vehicles equipped with HID AFS headlights, ensure that you order the correct part number for the specific production date range for the vehicle being repaired.

For Japan Built Vehicles (VINs starting with WMI "JTJ")

MODEL	GRADE	DESCRIPTION	PRODUCTION DATE	PART NUMBER	QTY	
RX 330	w/o HID	Unit, Headlamp, LH	02/2003 – 01/2006	81170-48200	1	
RX 350			01/2006 – 12/2008	81170-48200	1	
RX 330	HID		02/2003 – 08/2004	81185-48210	1	
	HID (w/ AFS, cut line)		02/2003 – 08/2005*	81185-48260	1	
RX 330 / 350	HID (w/ AFS, non-cut line)		08/2005 – 12/2008*	81185-48261	1	
RX 330	w/o HID		Unit, Headlamp, RH	02/2003 – 01/2006	81130-48200	1
RX 350				01/2006 – 12/2008	81130-48200	1
RX 330	HID			02/2003 – 08/2004	81145-48210	1
	HID (w/ AFS, cut line)			02/2003 – 08/2005*	81145-48260	1
RX 330 / 350	HID (w/ AFS, non-cut line)			08/2005 – 12/2008*	81145-48261	1

* For Japan built vehicles produced through 08/2005 – 08/2007, it is necessary to remove the original headlamp, locate the original part number on the housing, and compare the original part number with the new part number (for parts ordering accuracy).

Excess Headlamp Moisture

Parts Information (Continued)

MODEL	GRADE	DESCRIPTION	PRODUCTION DATE	PART NUMBER	QTY		
RX 400h	w/o HID	Unit, Headlamp, LH	03/2005 – 08/2007*	81170-48200	1		
			08/2007 – 12/2008*	81170-48600	1		
	HID		03/2005 – 08/2005	81185-48210	1		
	HID (w/ AFS, cut line)		03/2005 – 08/2005*	81185-48260	1		
			08/2005 – 08/2006*	81185-48211	1		
	HID (w/ AFS, non-cut line)		08/2005 – 08/2007*	81185-48261	1		
	HID (w/ AFS, blue tint)		08/2007 – 12/2008*	81185-48640	1		
	w/o HID		Unit, Headlamp, RH	03/2005 – 08/2007*	81130-48200	1	
				08/2007 – 12/2008*	81130-48600	1	
				HID	03/2005 – 08/2005	81145-48210	1
				HID (w/ AFS, cut line)	03/2005 – 08/2005*	81145-48260	1
					08/2005 – 08/2006*	81145-48211	1
				HID (w/ AFS, non-cut line)	08/2005 – 08/2007*	81145-48261	1
				HID (w/ AFS, blue tint)	08/2007 – 12/2008*	81145-48640	1

* For Japan built vehicles produced through 08/2005 – 08/2007, it is necessary to remove the original headlamp, locate the original part number on the housing, and compare the original part number with the new part number (for parts ordering accuracy).

Excess Headlamp Moisture

Parts Information (Continued)

For North American Built Vehicles (VINs Starting with WMI "2T2")

MODEL	GRADE	DESCRIPTION	PRODUCTION DATE	PART NUMBER	QTY
RX 330 / 350	w/o HID	Unit, Headlamp, LH	09/2003 – 01/2009	81170-48200	1
RX 330	HID		09/2003 – 09/2004	81185-48210	1
	HID (w/ AFS, cut line)		09/2003 – 09/2005*	81185-48260	1
RX 330 / 350	HID (w/ AFS, non-cut line)		09/2005 – 01/2009*	81185-48261	1
	w/o HID	Unit, Headlamp, RH	09/2003 – 01/2009	81130-48200	1
RX 330	HID		09/2003 – 09/2004	81145-48210	1
	HID (w/ AFS, cut line)		09/2003 – 09/2005*	81145-48260	1
RX 330 / 350	HID (w/ AFS, non-cut line)		09/2005 – 01/2009*	81145-48261	1

* For North American built vehicles produced through 09/2005, it is necessary to remove the original headlamp, locate the original part number on the housing, and compare the original part number with the new part number (for parts ordering accuracy).

For ALL Vehicles with an Inoperative ECU

NOTE
ONLY replace the headlamp ECU listed below if the new headlamp does not function when reassembled.

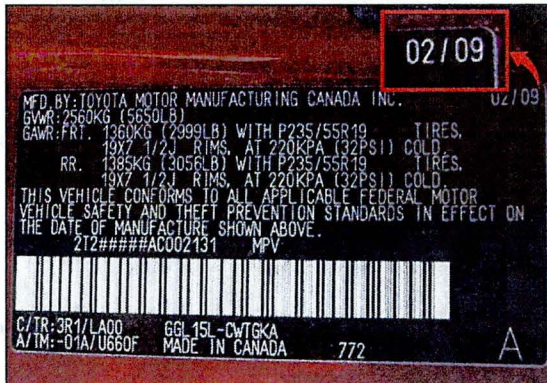
MODEL	GRADE	DESCRIPTION	PRODUCTION DATE	PART NUMBER	QTY
All	All HID	Computer, Light Control	All	85967-51020	1

Excess Headlamp Moisture

Parts Information (Continued)

NOTE

- AFS (Adaptive Front Lighting System) refers to an automatic lamp orientation control system that takes into account both steering angle and vehicle speed to orient the headlamps to an angle that provides better nighttime visibility.
- HID (High Intensity Discharge) headlamp refers to a specific type of headlamp bulb that is generally brighter than conventional headlamp bulbs.
- Certain vehicles equipped with HID AFS headlights have a distinct beam pattern or “cut line.” It is important that you order the correct part number for the specific production date of the vehicle being repaired.
- Production date can be verified by inspecting the Manufacturing Label located on the driver’s side “B” pillar.



Excess Headlamp Moisture

Repair Procedure

1. Confirm that there is a condition where excess moisture forms on the interior of the headlamp(s) as shown below.

Figure 1 shows pooling of water at the bottom of the headlamp.

Figure 1. Examples of Excess Moisture: Pooling

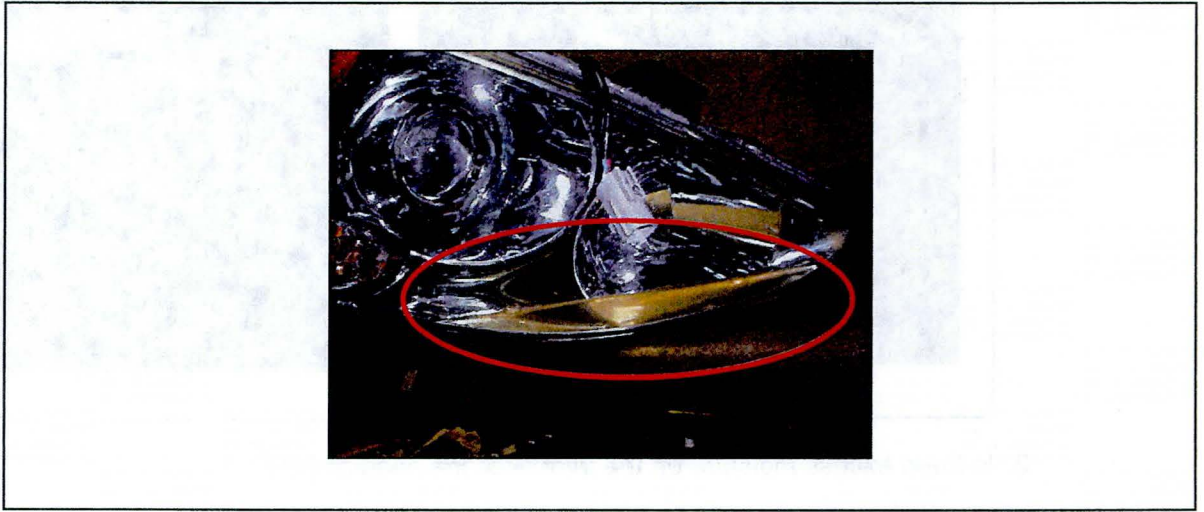
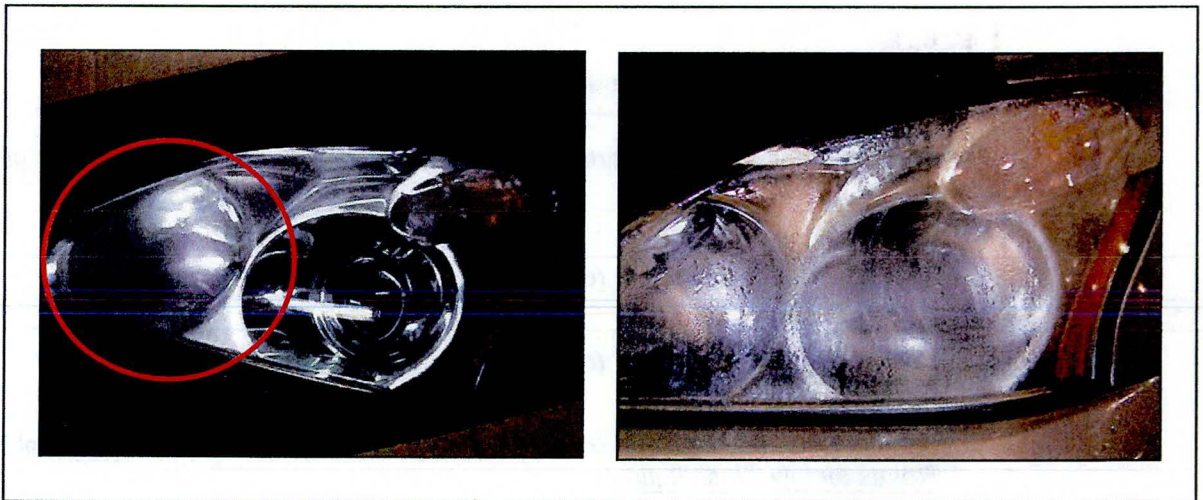


Figure 2 shows noticeable streaks that run down the interior of the headlamp lenses that do not clear with normal use of the vehicle in dry weather conditions.

Figure 2. Examples of Excess Moisture: Streaks

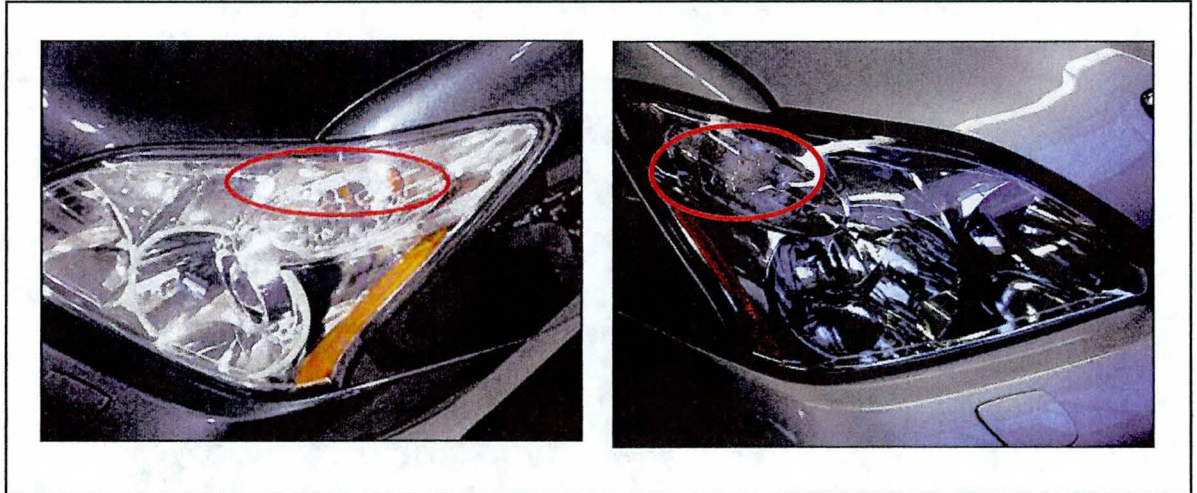


Excess Headlamp Moisture

Repair Procedure (Continued)

Figure 3 shows normal moisture on the interior of the headlamp lens.

Figure 3. Examples of Normal Moisture



2. Is there excess moisture on the interior of the headlamp(s)?
 - **YES** — Continue to step 3 for the headlamp housing.
 - **NO** — This bulletin does NOT apply.
3. Remove and replace the headlamp housing.

NOTICE

To prevent contamination, handle bulb **ONLY** at the base.

Refer to the Technical Information System (TIS), applicable model and model year Repair Manual:

- 2004 RX 330:
Vehicle Exterior – Lighting (ext) – “LH Headlamp Assy: [Overhaul](#)”
- 2005 RX 330:
Vehicle Exterior – Lighting (ext) – “LH Headlamp Assy: [Overhaul](#)”
- 2006 RX 330:
Vehicle Exterior – Lighting (ext) – “Lighting: Headlight Assembly: [Removal / Disassembly / Resassembly / Installation](#)”
- 2007 RX 350:
Vehicle Exterior – Lighting (ext) – “Lighting: Headlight Assembly: [Removal / Disassembly / Resassembly / Installation](#)”

Excess Headlamp Moisture

Repair Procedure (Continued)

- 2008 RX 350:
Vehicle Exterior – Lighting (ext) – “Lighting: Headlight Assembly: [Removal / Disassembly / Resassembly / Installation](#)”
 - 2009 RX 350:
Vehicle Exterior – Lighting (ext) – “Lighting: Headlight Assembly: [Removal / Disassembly / Resassembly / Installation](#)”
 - 2006 RX 400h:
Vehicle Exterior – Lighting (ext) – “Lighting: Headlight Assembly: [Removal / Disassembly / Resassembly / Installation](#)”
 - 2007 RX 400h:
Vehicle Exterior – Lighting (ext) – “Lighting: Headlight Assembly: [Removal / Disassembly / Resassembly / Installation](#)”
 - 2008 RX 400h:
Vehicle Exterior – Lighting (ext) – “Lighting: Headlight Assembly: [Removal / Disassembly / Resassembly / Installation](#)”
4. Confirm proper operation of the headlight(s).

If headlight(s) do not illuminate, refer to TIS, applicable model and model year Repair Manual for troubleshooting procedures:

- 2004 RX 330:
Vehicle Exterior – Lighting (ext) – “Lighting: Lighting System: [Problem Symptoms Table](#)”
- 2005 RX 330:
Vehicle Exterior – Lighting (ext) – “Lighting: Lighting System: [Problem Symptoms Table](#)”
- 2006 RX 330:
Vehicle Exterior – Lighting (ext) – “Lighting: Lighting System: [Problem Symptoms Table](#)”
- 2007 RX 350:
Vehicle Exterior – Lighting (ext) – “Lighting: Lighting System: [Problem Symptoms Table](#)”
- 2008 RX 350:
Vehicle Exterior – Lighting (ext) – “Lighting: Lighting System: [Problem Symptoms Table](#)”
- 2009 RX 350:
Vehicle Exterior – Lighting (ext) – “Lighting: Lighting System: [Problem Symptoms Table](#)”
- 2006 RX 400h:
Vehicle Exterior – Lighting (ext) – “Lighting: Lighting System: [Problem Symptoms Table](#)”
- 2007 RX 400h:
Vehicle Exterior – Lighting (ext) – “Lighting: Lighting System: [Problem Symptoms Table](#)”
- 2008 RX 400h:
Vehicle Exterior – Lighting (ext) – “Lighting: Lighting System: [Problem Symptoms Table](#)”