



HYUNDAI

NEW THINKING.
NEW POSSIBILITIES.

Technical Service Bulletin

GROUP
CAMPAIGN

NUMBER
14-01-061

DATE
DECEMBER 2014

MODEL(S)
EQUUS (VI)

SUBJECT:

**MOOD LAMP INSPECTION AND REPLACEMENT
(SERVICE CAMPAIGN TW1)**

★ IMPORTANT

*******DEALER STOCK ONLY*******

Dealers must perform this Service Campaign on all affected vehicles prior to customer retail delivery.

When a vehicle arrives at the Service Department, access Hyundai Motor America's "Warranty Vehicle Information" screen via WEBDCS to identify open Campaigns.

Description: This bulletin provides a service procedure to inspect and replace the front seats mood lamps if one of the lamps is dimmer than the other or does not illuminate.

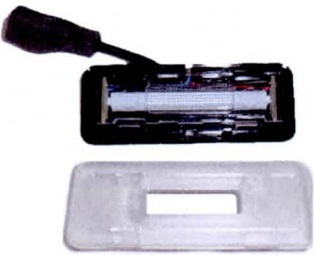

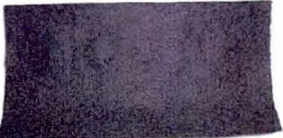
Applicable Vehicles: Certain 2015 Equus (VI)



Circulate To: General Manager, Service Manager, Parts Manager, Warranty Manager, Service Advisors, Technicians, Body Shop Manager, Fleet Repair

**SUBJECT: MOOD LAMP INSPECTION AND REPLACEMENT
(SERVICE CAMPAIGN TW1)**

Parts Information:

PART NAME	FIGURE / PART NUMBER	Part Number
MOOD LAMP		88396-3N000QQH
LH PAD (Driver Seat)		88391-3N000QQH
RH PAD (Passenger Seat)		88392-3N000QQH

Warranty Information:

OP CODE	OPERATION	OP TIME
40C065R3	MOOD LAMP INSPECTION	0.2 M/H
40C065R4	MOOD LAMP INSPECTION AND REPLACEMENT (ONE SIDE)	0.3 M/H
40C065R5	MOOD LAMP INSPECTION AND REPLACEMENT (BOTH SIDES)	0.4 M/H

NOTE: Submit Claim on Campaign Claim Entry Screen

Service Procedure:

MOOD LAMP INSPECTION

NOTICE

- The mood lamp is located under the passenger and driver seat and visible when sitting in the rear passenger seats.
- It is recommended to inspect the mood lamp in the shade or in a dark indoor place.

1. Open the driver and passenger rear doors.

Check underneath the driver and passenger front seat to confirm the mood lights are operating normally.

If the mood lamp operates normally and bright enough, no further service is required.

If one of the mood lamps is darker than the other or does not illuminate, replace it with a new one.

NOTICE

When checking the mood lamp, place your eyes as level to the lamp as possible.



MOOD LAMP REPLACEMENT

1. Turn the ignition **ON** (Press the Start-Stop button 2 times without depressing the brake pedal).

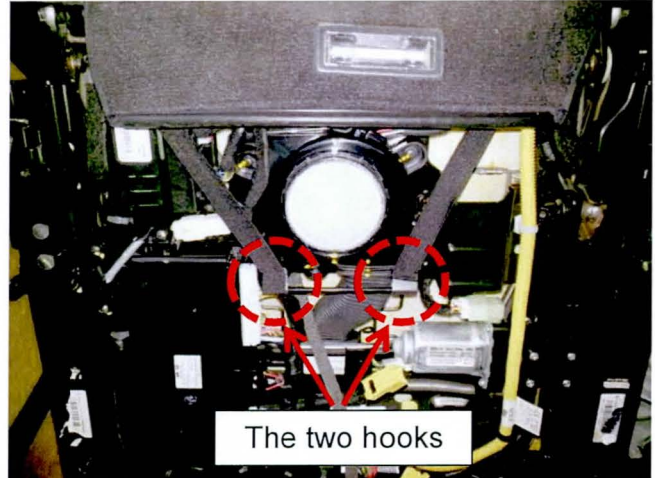


2. Using the seat control switches, move the seat to its maximum forward, and upward position.



3. Remove the seat back cover hooks located at the bottom of the seat.





4. Remove the mood lamp lens cover.

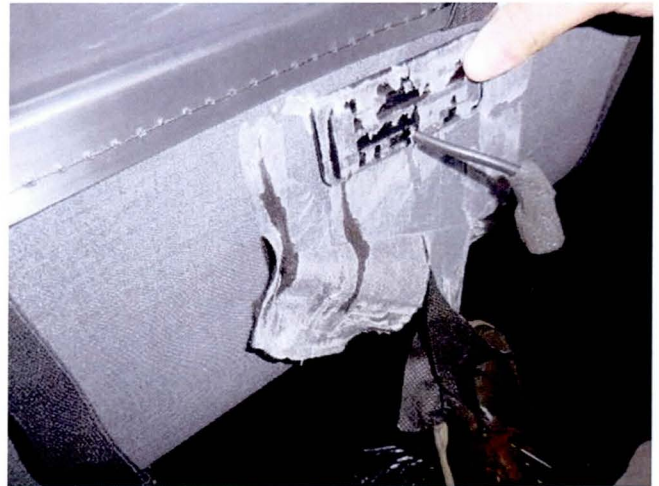


5. Disconnect the mood lamp connector



**SUBJECT: MOOD LAMP INSPECTION AND REPLACEMENT
(SERVICE CAMPAIGN TW1)**

6. Remove the pad



7. Remove the mood lamp



8. Remove the remaining pad residue on the seat back cover.



9. Install the new mood lamp.



**SUBJECT: MOOD LAMP INSPECTION AND REPLACEMENT
(SERVICE CAMPAIGN TW1)**

10. Install the new mood lamp lens cover.

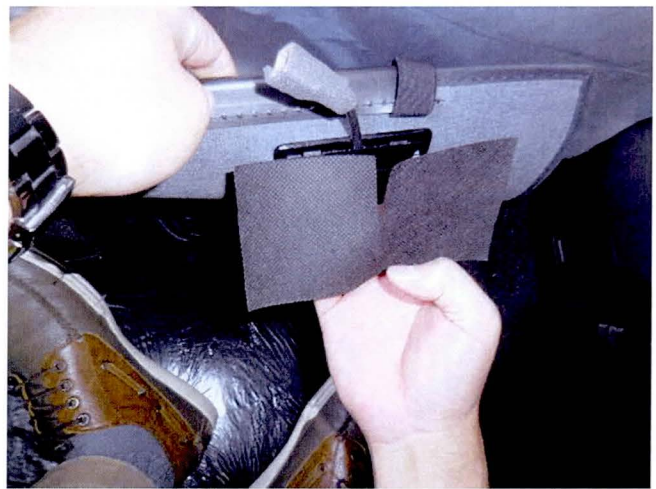


11. Confirm the correct pad for the seat (driver or passenger) is being used.

Attach the new pad.

NOTICE

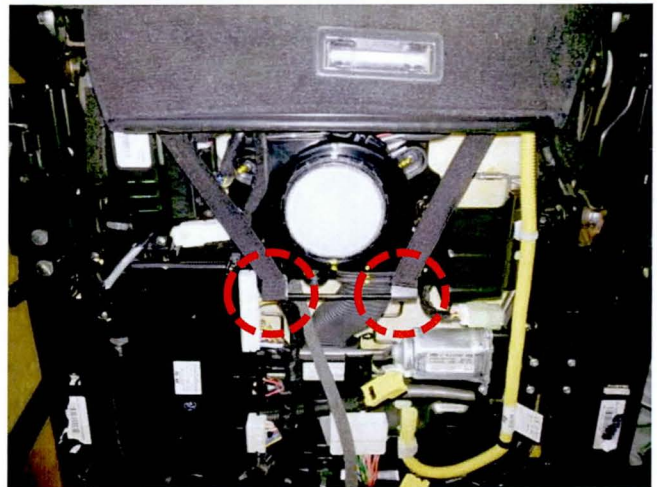
- The mood lamp connector should be located at the center cut area of the pad.



12. Reconnect the mood lamp connector.



13. Reinstall the seat back cover clip.



14. Turn the ignition switch **ON** and check underneath the driver and passenger front seat to confirm the mood lights are operating normally.

