

 HYUNDAI NEW THINKING. NEW POSSIBILITIES. Technical Service Bulletin	GROUP CAMPAIGN	NUMBER 14-01-058
	DATE DECEMBER 2014	MODEL(S) GENESIS SEDAN (DH)
SUBJECT: DOOR STEP PLATE INSPECTION AND REPLACEMENT (SERVICE CAMPAIGN TV8)		

*** IMPORTANT**

*******DEALER STOCK ONLY*******

Dealers must perform this Service Campaign on all affected vehicles prior to customer retail delivery.

When a vehicle arrives at the Service Department, access Hyundai Motor America's "Warranty Vehicle Information" screen via WEBDCS to identify open Campaigns.

Description: This bulletin describes the procedure to inspect the front and rear door step plates and replace if necessary on certain Genesis Sedan (DH) vehicles.



Applicable Vehicles: Certain 15MY GENESIS SEDAN (DH)

Circulate To: General Manager, Service Manager, Parts Manager, Warranty Manager, Service Advisors, Technicians, Body Shop Manager, Fleet Repair

SUBJECT: DOOR STEP PLATE INSPECTION AND REPLACEMENT

Parts Information:

PART NAME	PART NUMBER	REMARKS	
		Lamp	Color
DOOR STEP PLATE (FRONT)			
	85873B1000RNBQH (Left Side)	NO	Chocolate
	85873B1500RNBQH (Left Side)	YES	Chocolate
	85873B1000RRYQH (Left Side)	NO	Black
	85873B1500RRYQH (Left Side)	YES	Black
	85883B1000RNBQH (Right Side)	NO	Chocolate
	85883B1500RNBQH (Right Side)	YES	Chocolate
	85883B1000RRYQH (Right Side)	NO	Black
	85883B1500RRYQH (Right Side)	YES	Black
DOOR STEP PLATE (REAR)			
	85878B1000RNBQH (Left Side)	NO	Chocolate
	85878B1000RRYQH (Left Side)	NO	Black
	85888B1000RNBQH (Right Side)	NO	Chocolate
	85888B1000RRYQH (Right Side)	NO	Black

NOTICE

**Black step plate goes with Black, Black/Ivory Interior.
Chocolate step plate goes with Beige and Gray Interior.**

SUBJECT: DOOR STEP PLATE INSPECTION AND REPLACEMENT**Warranty Information:**

OP CODE	OPERATION	OP TIME
40C063R4	DOOR STEP PLATE INSPECTION	0.3
40C063R5	DOOR STEP PLATE INSPECTION AND REPLACE ONE(1) FRONT DOOR STEP PLATE	0.3
40C063R6	DOOR STEP PLATE INSPECTION AND REPLACE TWO(2) FRONT DOOR STEP PLATES	0.3
40C063R7	DOOR STEP PLATE INSPECTION AND REPLACE ONE(1) REAR DOOR STEP PLATE	0.3
40C063R8	DOOR STEP PLATE INSPECTION AND REPLACE TWO(2) REAR DOOR STEP PLATE	0.3
40C063R9	DOOR STEP PLATE INSPECTION AND REPLACE ONE(1) FRONT DOOR STEP PLATE AND ONE(1) REAR DOOR STEP PLATE	0.3
40C063RA	DOOR STEP PLATE INSPECTION AND REPLACE TWO(2) FRONT DOOR STEP PLATES AND ONE(1) REAR DOOR STEP PLATE	0.4
40C063RB	DOOR STEP PLATE INSPECTION AND REPLACE ONE(1) FRONT DOOR PLATE AND TWO(2) REAR DOOR STEP PLATES	0.4
40C063RC	DOOR STEP PLATE INSPECTION AND REPLACE TWO(2) FRONT DOOR PLATES AND TWO(2) REAR DOOR STEP PLATES	0.5

NOTICE

Lamps are optional items only on the front door step plates (Not applicable to rear doors)

NOTE: Submit Claim on Campaign Claim Entry Screen

Service Procedure:

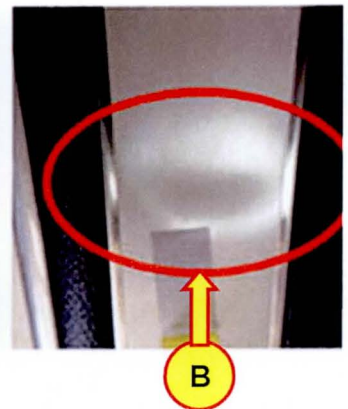
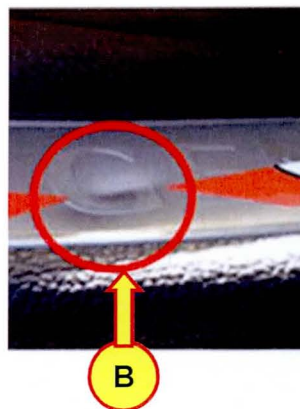
Dent Inspection

1. Check if there are any dents on the step plates (A) on both sides of the front and rear doors.
 - * If there are no dents, no additional procedure is required.
 - * If there is a dent on any door step plate, replace with a new one using the following procedures.

NOTICE

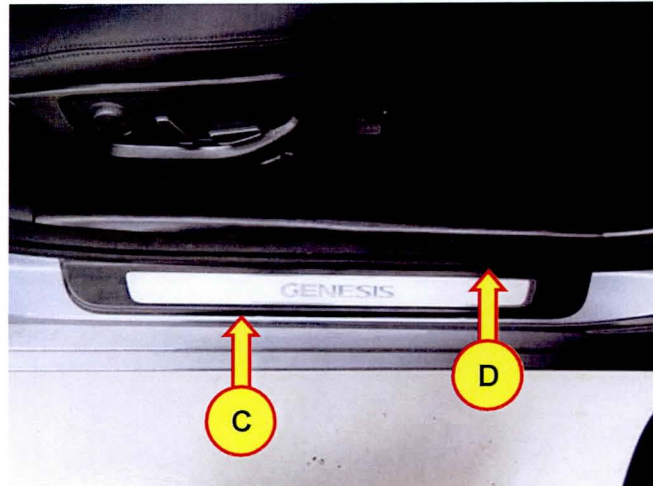
Do not replace a door step plate that is not dented.

Examples of dented door step plate (B):

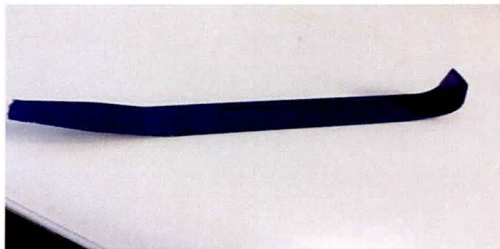


Front Door Step Plate Replacement

1. Remove the front door scuff trim (C), then the weather strip (D).

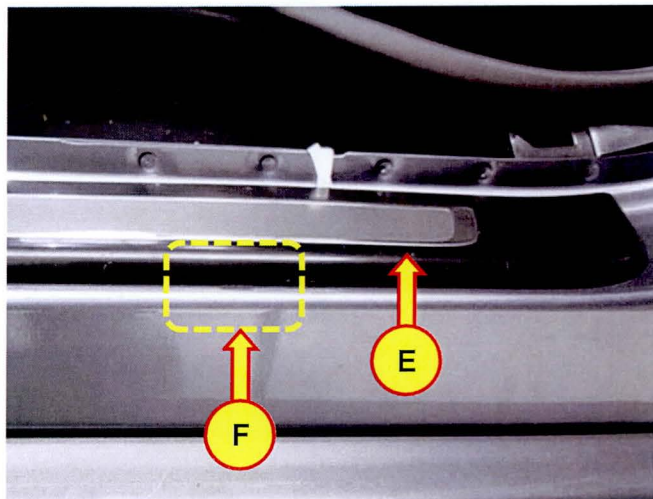


2. Remove the door step plate (E) by inserting a plastic trim tool (see below) into the groove (F)



NOTICE

When removing, do not scratch vehicle body.



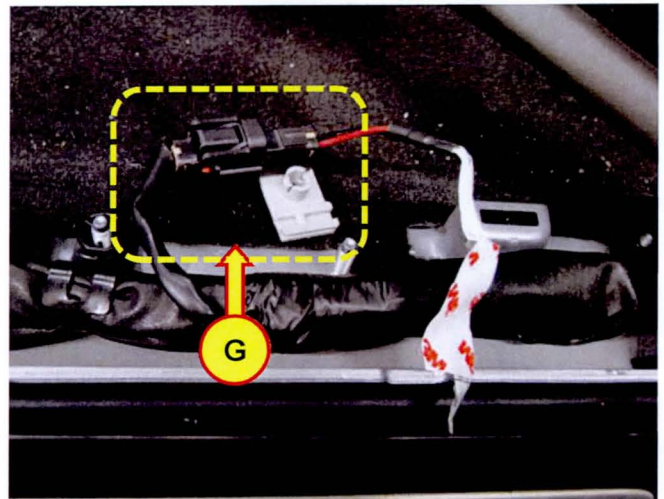
SUBJECT: DOOR STEP PLATE INSPECTION AND REPLACEMENT

3. Disconnect the connector (G) of the door step plate lamp.

If not equipped with step plate lamps proceed to step # 4 for front plate or step # 1 of Rear Door Step Plate Replacement for the rear plate.

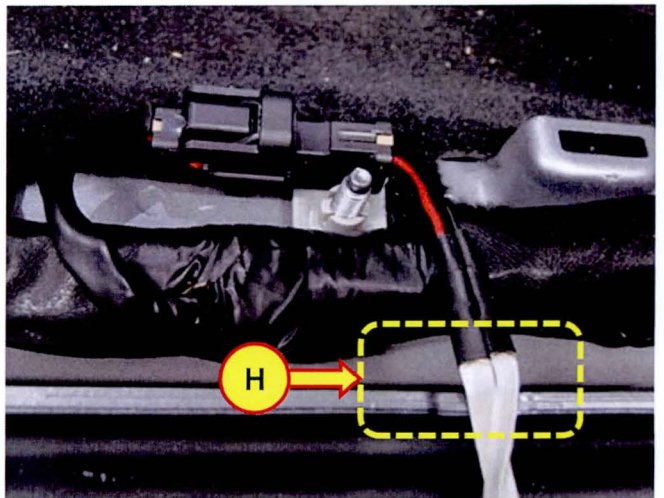
NOTICE

This procedure is only for the front door step plate with lamp.



NOTICE

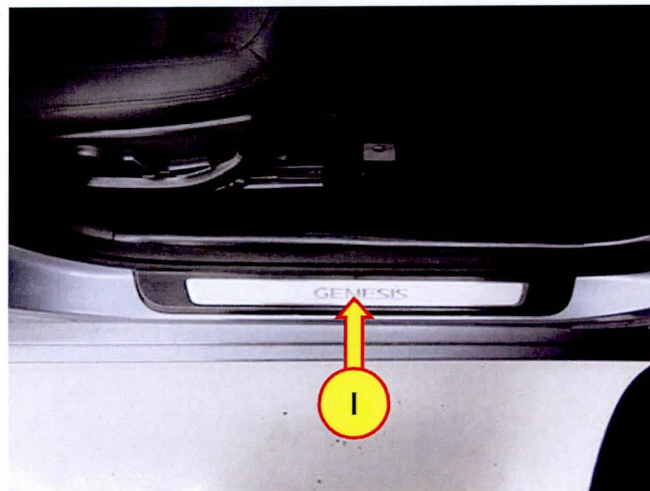
When placing the wiring harness of the new step plate lamp, make sure that it is on the groove (H).



SUBJECT: DOOR STEP PLATE INSPECTION AND REPLACEMENT

4. Install the new door step plate in reverse order of removal.

Cover front step plate (I) with sponge pad, then proceed to fasten securely front step plate with **rubber hammer**.



5. Confirm proper replacement of front door step plate by ensuring it illuminates when front doors are open; if so equipped.



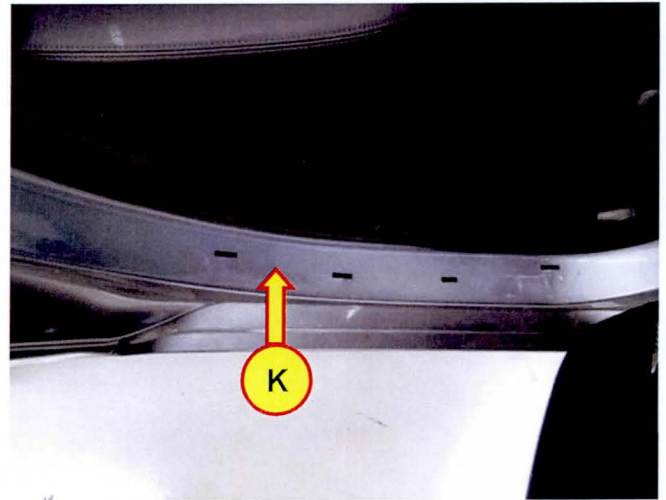
Rear Door Step Plate Replacement

1. Remove the rear door step plate (J) by using a plastic trim tool.



SUBJECT: DOOR STEP PLATE INSPECTION AND REPLACEMENT

2. When removing step plate, do **not** scratch the vehicle body (K).



3. Install the new door step plate in reverse order of removal.



4. Cover front step plate (L) with sponge pad, and then proceed to fasten securely front step plate with **rubber hammer**.