



HYUNDAI | NEW THINKING.
NEW POSSIBILITIES.

Technical Service Bulletin

GROUP	NUMBER
CAMPAIGN	14-01-041
DATE	MODEL(S)
OCTOBER 2014	SANTA FE SPORT (AN)

SUBJECT: STEERING COLUMN U-JOINT NOISE FROM NOISE ISOLATION PAD (SERVICE CAMPAIGN TU3)

★ IMPORTANT

*******DEALER STOCK ONLY*******

Dealers must perform this Service Campaign on all affected vehicles prior to customer retail delivery.

When a vehicle arrives at the Service Department, access Hyundai Motor America's "Warranty Vehicle Information" screen via WEBDCS to identify open Campaigns.

Description: This bulletin describes the procedure to inspect and repair certain Santa Fe Sport (AN) vehicles for a rubbing or popping noise. The noise isolation pad may be positioned in such a way that it contacts the steering column U-joint when turning the steering wheel.

NOTICE

This condition has no effect on the operation of the steering system.



Applicable Vehicles: 2015 Santa Fe Sport (AN) vehicles.

Model	Op. Code	Operation	Op. Time
Santa Fe Sport (AN)	40CG04R0	ISO Pad Interference Inspection	0.3 M/H
	40CG04R1	ISO Pad Inspection and Material Removal	0.4 M/H

NOTE: Submit Claim on Campaign Claim Entry Screen

Circulate To: General Manager, Service Manager, Parts Manager, Warranty Manager, Service Advisors, Technicians, Body Shop Manager, Fleet Repair

Service Procedure:

1. Locate the steering column shaft and U-joint connection to the steering rack at the firewall in the driver's foot-well area.



2. Turn the steering wheel left and right full-lock in each direction repeatedly. While doing so, listen and look at the area to identify any noise and/or rubbing condition between the U-joint and the noise isolation pad.

If no noise or contact is noted, no further repairs are needed.

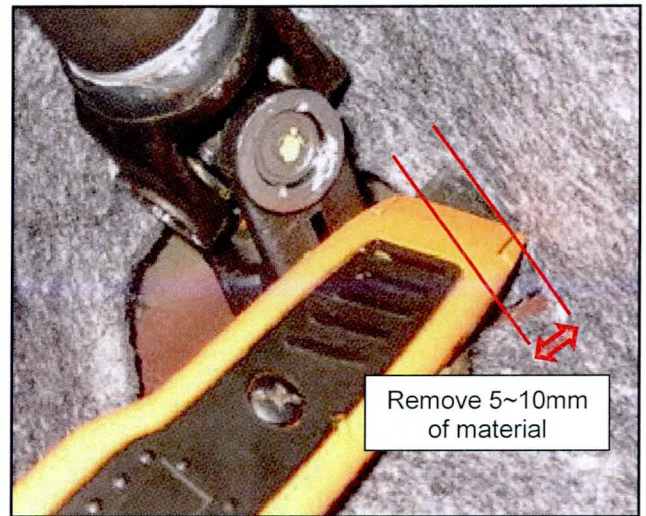
If a noise or contact is noted, continue to step 3.



3. Using a light if needed, locate the area of contact.



- Using a utility blade (or other desired trimming tool), remove 5~10mm of noise isolation pad material from the area of contact to eliminate the noise.



- Turn the steering wheel left and right full-lock in each direction repeatedly to confirm contact and noise have been eliminated.