 HYUNDAI NEW THINKING. NEW POSSIBILITIES. Technical Service Bulletin	GROUP CAMPAIGN	NUMBER 14-01-006
	DATE JANUARY 2014	MODEL GENESIS COUPE (BK)
SUBJECT: ECM UPDATE – DTC P0263/P0266/P0269/P0272/P0275/P0278 (SERVICE CAMPAIGN TS2)		

 **ECU Update**

*** IMPORTANT**

*****DEALER STOCK AND RETAIL VEHICLES*****

Dealers must perform this Campaign on all affected vehicles prior to customer retail delivery and whenever an affected vehicle is in the shop for any maintenance or repair.

When a vehicle arrives at the Service Department, access Hyundai Motor America's "Warranty Vehicle Information" screen via WEBDCS to identify open Campaigns.

Description:

This bulletin provides an ECM software update to revise the logic of the following DTC:

- P0263 Cylinder1 Contribution/Balance
- P0266 Cylinder2 Contribution/Balance
- P0269 Cylinder3 Contribution/Balance
- P0272 Cylinder4 Contribution/Balance
- P0275 Cylinder5 Contribution/Balance
- P0278 Cylinder6 Contribution/Balance

Applicable Vehicles:

- 13 MY Genesis Coupe (BK) 3.8L GDI vehicles
- Production Date: January 20, 2012 ~ October 11, 2012

GDS Information:

EVENT #	DESCRIPTION
282*	"BK 3.8 GDI CYLINDER IMBALANCE DTC LOGIC IMPROVEMENT."

(* the latest event that shows up in the Engine Auto Mode event list for the particular vehicle/engine)

Warranty Information:

Model	Op Code	Operation	Op Time
GENESIS COUPE (BK)	30C087R0	ECM UPGRADE	0.3 M/H

Note: Submit claim on Campaign claim entry screen.

Circulate To: Service Manager, Warranty Manager, Service Advisors, Technicians, Fleet Repair

ROM ID INFORMATION TABLE:

Verify the ECM ROM ID before updating the vehicle's software. Refer to the table below.

Model	Engine	ECM P/N	T/M	IMMO	ECM ROM ID	
					Previous	New
GENESIS COUPE (BK)	3.8 GDI	39115-3CKN0	8AT	Yes (push button start)	BKCN38GM2**CK7A* BKCN38GM2**CK7B*	BKCN38GM2**CL1A*
		39116-3CKN0	6MT	Yes (push button start)	BKCN38GM2M6CK7A* BKCN38GM2M6CK7B*	BKCN38GM2M6CL1A*
		39106-3CKN0		No (key start)	BKCN38GS2M6CK7A* BKCN38GS2M6CK7B*	BKCN38GS2M6CL1A*

GENERAL PRECAUTIONS:

- Connect the USB cable between the GDS and the VCI.
- Connect the 16-pin DLC connector from the VCI into the DLC located under the driver's side dash.



*** NOTE**

Make sure the battery icon at the bottom right of the GDS laptop shows at least 50%; if not, charge the GDS or attach a battery charger.

- Turn off all lights (Do not leave the headlight switch in auto mode) and all accessories (including heater/air conditioner/fan, audio, heated seats, rear defroster, etc) to ensure the battery will not be discharged during the update.
- Perform the update with the ignition key in the ON position.
- Do not disconnect any cables connected to the vehicle or the GDS during the update.
- Do not start the engine or turn the ignition switch OFF during the update.

*** NOTE**

Confirm your GDS has the most recent version. If not, connect the GDS to an Internet port, open the GDS home page and select "Update". Refer to instructions on hmaservice.com if necessary.

If you encounter GDS related problems, call the GIT Helpline at 888-437-0308.

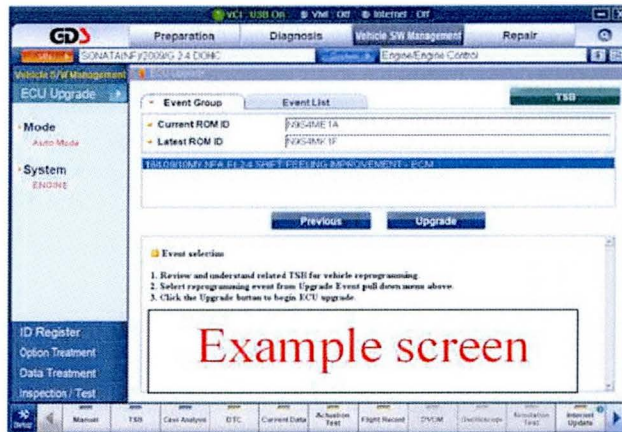
SERVICE PROCEDURE:

GDS AUTO MODE ECM UPDATE PROCEDURE

1. From the GDS home page, select **ECU Upgrade**. If necessary, select the VIN.
2. Select **Engine** as the system and then select **OK**.
3. Select **Auto Mode** and then select **Next**.
4. From the **System** tab, select **Engine** and then select **OK**. The GDS will read the ROM ID. Confirm the ROM is applicable as shown on Page 2, “ROM ID Information”.



5. Select update event as listed on the **GDS Event list of page-1**. Select **Upgrade**.



6. If the screen indicates “**Voltage is OK**” (voltage > 12volts), select **OK**. If not, select **CANCEL** and charge the vehicle battery by running the engine for 10 minutes, then attempt update again.
7. Updating will occur until 100% is reached on the bar graph. At the prompt, turn the ignition key OFF for 10 seconds, then turn it ON and select **OK**.
8. The GDS will confirm that ECM reprogramming is successfully finished. Select **OK**.
9. If the ECM update was not successful, go to **GDS MANUAL MODE ECM UPDATE PROCEDURE**.
10. Check for DTC in all systems and Erase All DTC that stored due to loss of CAN communication during the ECM Update.
11. Turn **OFF ignition 10 seconds** then turn **ON** before going to engine start.
12. Start the engine to confirm proper operation.
13. Clear DTC in the BlueLink system per instructions of TSB 12-BE-005-2.

*** NOTE:**

In event of AUTO MODE update failure:

- You must attempt MANUAL MODE. Use the ECM P/N from the vehicle's ECM label if it is not clear from the ROM ID Table as to the correct ECM P/N to use for your vehicle.
- If MANUAL MODE update attempt also failed, then create a GDS screenshot with the error message before proceeding.
- The printed copy of this GDS error screenshot must be attached to the Repair Order as evidence to prevent a potential warranty chargeback.

GDS MANUAL MODE ECM UPDATE PROCEDURE

*** NOTE**

- GDS Manual Mode is intended for recovery of an ECM Update should it begin but then later fail in process in the Auto Mode.
- The ECM connectors must be disconnected for 15 minutes to reset its contents then perform this Manual Mode Update.
- Do not force Manual Mode if you get an error in Auto Mode that the vehicle's current ROM ID did not apply.
- It is critical to identify the correct ECM Part Number in the PASSWORD table or the ECM may be permanently damaged. It is recommended to remove ECM and read the part number from the label to confirm.

1. From the GDS home page, select **ECU Upgrade**. If necessary, select the VIN.
2. Select **Engine** as the system and then select **OK**.
3. Select **Manual Mode** and then select Next.
4. From the **System** tab, select **Engine** and then select **OK**.
5. Select update event as per the **GDS Event List of page-1**, then select **Upgrade**.
6. Be certain to enter the exact appropriate password from the table below and select **OK**. **See the important NOTE above.**
7. The remaining steps are same as Steps 6~13 of the Auto Mode Procedure.

MENU	Ignition Start Type	PASSWORD
BK 3.8 GDI 8AT IMMO : 39115-3CKN0	Push button start	1530
BK 3.8 GDI 6MT IMMO : 39116-3CKN0	Push button start	1630
BK 3.8 GDI 6MT NON IMMO : 39106-3CKN0	Key start	1060