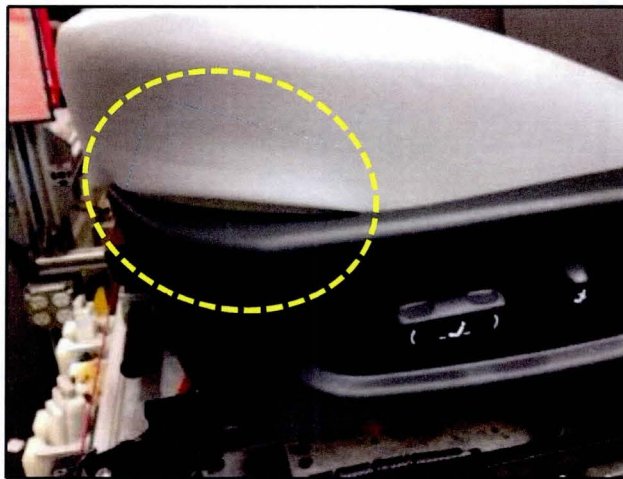
	GROUP BOD	MODEL 2012-13MY Optima (QF)
	NUMBER 104	DATE May 2014
TECHNICAL SERVICE BULLETIN		
SUBJECT: DRIVER'S SIDE SEAT CUSHION COVER DETACHING		

This bulletin provides information about some 2012~2013MY Optima (QF) models, produced from August 9, 2011 through April 11, 2013, which may experience a loose or disengaged driver's side seat outer trim cover. Follow the procedure outlined in this TSB to correct the concern.



Seat Cover Detached

File Under: <Body>

Circulate To: General Manager Service Manager Parts Manager

Service Advisor(s) Technician(s) Body Shop Manager Fleet Repair

SUBJECT: DRIVER'S SIDE SEAT CUSHION COVER DETACHING

1. Move the seat to the forward-most position in preparation for removal of the side trim cover.

⚠ CAUTION

Be sure to carefully remove the side trim cover to prevent damaged or broken clips



2. Use your fingers to disconnect the first tab by applying a light pulling force at the lower rear edge of the side trim cover. Pull the trim piece out and away from the seat.



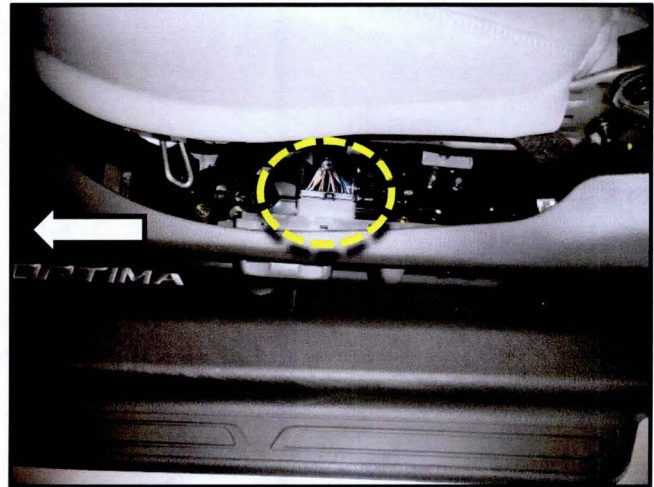
3. Use your fingers to disconnect the second tab by applying a light pulling force at the upper rear edge of the side trim cover. Pull the trim piece out and away from the seat.



SUBJECT:

DRIVER'S SIDE SEAT CUSHION COVER DETACHING

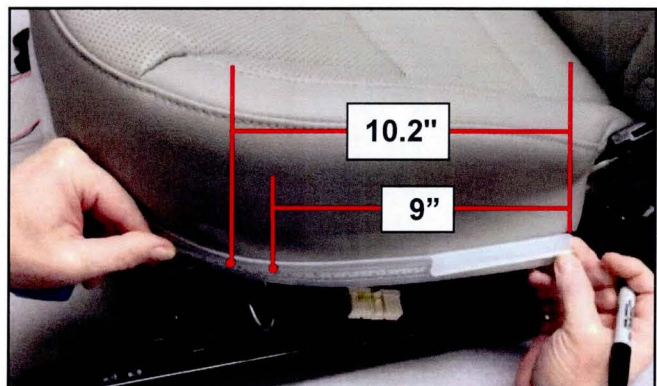
- Carefully remove the connector and slide the side trim cover forward to disengage it from the mounting bracket.



- Unclip and flip the seat cover J-clip retainer upward.



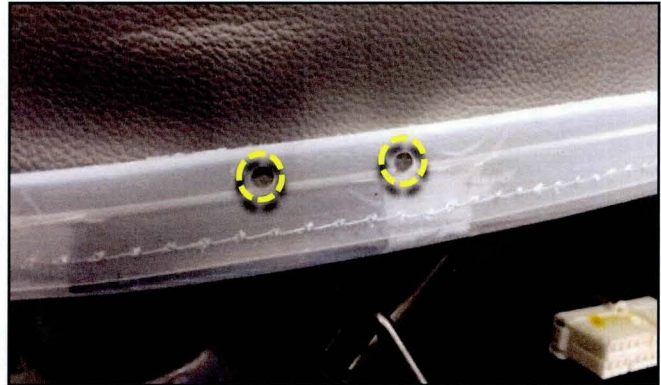
- Mark locations for holes 9" (230mm) and 10.2" (260mm) from the rear edge of the seat cover.



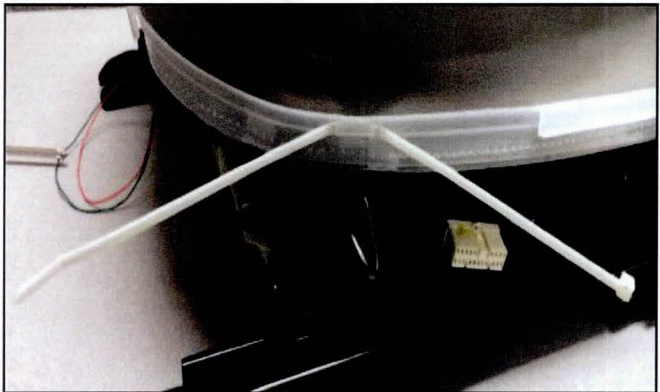
7. Use a hole punch tool or drill bit to create two 6mm holes at the locations marked in the previous step.

*** NOTICE**

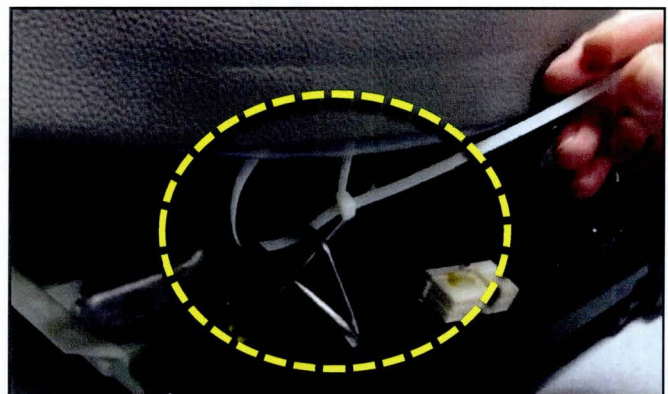
Be careful **NOT** to drill through the leather material.



8. Thread an 11" cable tie through the two holes created in the previous step and bring the J-clip retainer down to its normal position.

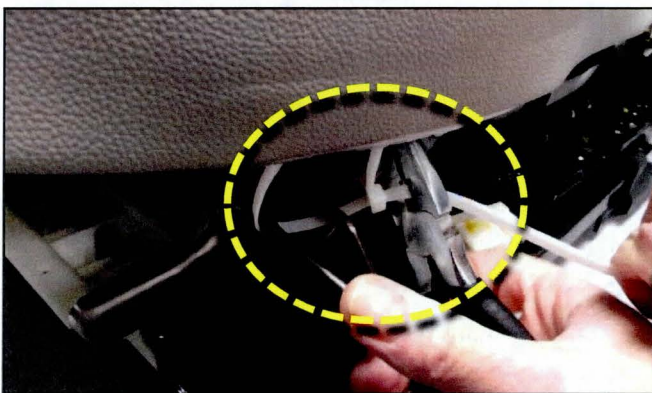


9. Wrap the cable tie around the retaining bracket, as shown.
NOTE: Avoid excessive tightening of the cable tie. Only moderate pulling force is required to keep the seat cover in place.

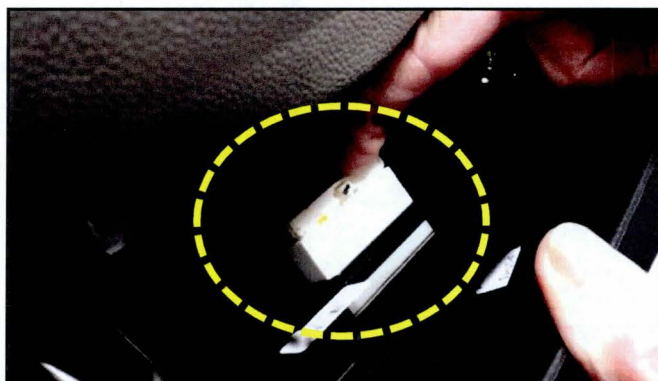


SUBJECT:**DRIVER'S SIDE SEAT CUSHION COVER DETACHING**

10. Trim the excess cable tie material using a pair of pliers.



11. Reconnect the wire harness plug to the seat side cover adjustment controls.



12. Reassemble the driver's side seat cover by reversing the order of removal and verify that the concern has been corrected.
13. Cycle the seat position several times to ensure proper operation.



SUBJECT: DRIVER'S SIDE SEAT CUSHION COVER DETACHING

AFFECTED VEHICLE PRODUCTION RANGE:

Model	Production Date Range
Optima (QF)	From August 9, 2011 to April 11, 2013

WARRANTY INFORMATION:

Claim Type	Causal P/N	Qty.	N Code	C Code	Repair Description	Labor Op Code	Op Time	Replacement P/N	Qty.
W	88260 4C051AN3	0	N86	C90	(BOD 104) Driver Side Seat Cushion Cover Detaching	88100F00	0.4 M/H	N/A	0