



HYUNDAI | NEW THINKING.
NEW POSSIBILITIES.

Technical Service Bulletin

GROUP CAMPAIGN	NUMBER 14-01-014
DATE MAY 2014	MODEL(S) SANTA FE SPORT (AN)

SUBJECT: SANTA FE SPORT RH OUTER TAIL LAMP (NON-LED)
REPLACEMENT (SERVICE CAMPAIGN TS9)

*** IMPORTANT**

***** Dealer Stock and Retail Vehicles *****

Dealers must perform this Service Campaign on all affected vehicles prior to customer retail delivery and whenever an affected vehicle is in the shop for any maintenance or repair.

When a vehicle arrives at the Service Department, access Hyundai Motor America's "Warranty Vehicle Information" screen via WEBDCS to identify open Campaigns.

Description: The RH outer tail lamp on certain Santa Fe Sport (AN) vehicles may exhibit a slight misalignment between the tail lamp housing and lens due to a manufacturing process error. This bulletin describes the procedure to replace the RH outer tail lamp



Applicable Vehicles: 2014MY Santa Fe Sport (AN) produced between 4/25/14 and 4/30/14

Parts Information:

Part Name	Part Number	Qty.
RH Outer Tail Lamp (Non LED)	92402-4Z000	1

Warranty Information:

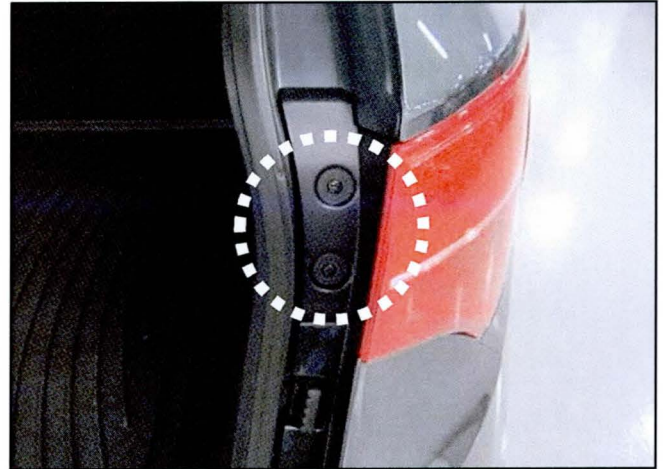
Model	Op Code	Operation	Op Time
AN	40CG01R0	RH Outer Tail Lamp Replacement	0.2 M/H

NOTE: Submit Claim on Campaign Claim Entry Screen

Circulate To: General Manager, Service Manager, Parts Manager, Warranty Manager, Service Advisors, Technicians, Body Shop Manager, Fleet Repair

Service Procedure:

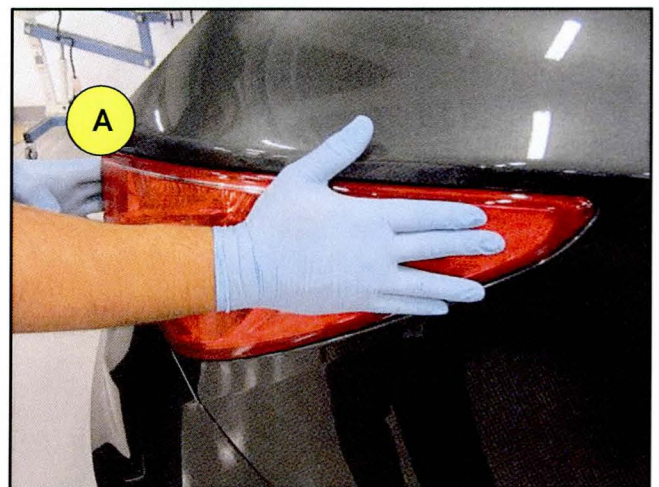
1. Open the lift gate to access the screws that secure the tail lamp. Remove both screws from the right hand side outer tail lamp using a phillips head screw driver.



2. Once the screws have been removed place a trim removal tool behind the plastic bracket where the screws were mounted in order to free the bracket enough to position your fingers behind the bracket. This will allow you to pull the tail lamp out of position to be replaced.



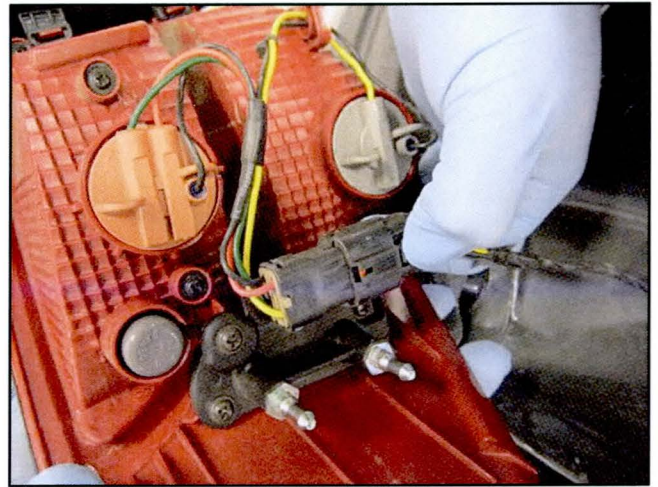
3. With one hand placed behind the bracket and the other hand on the lamp (A), close to the quarter panel. Pull the lamp towards your body until it is free from the vehicle.



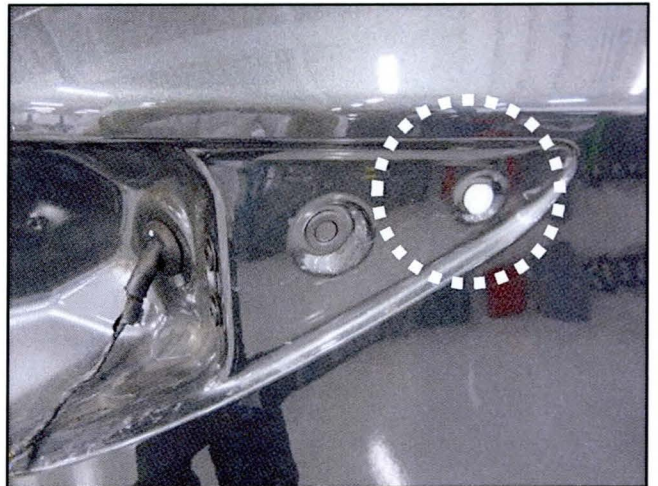
4. With the tail lamp free from the vehicle unplug the electrical connection.

*** NOTE**

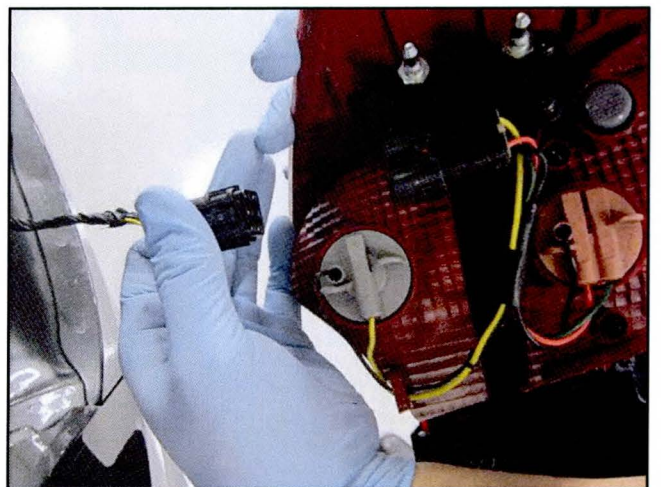
Take care to avoid scratching/damaging the painted surfaces around the tail lamp opening



5. Inspect all grommets to ensure they have not been compromised or unseated during removal of the tail lamp.



6. Install the new tail lamp. First make the electrical connection and perform a push pull push test to ensure the connection is secure.



7. Align guide pins and position lamp in to the body. Next push toward the front of the vehicle to secure lamp is in proper position. Finally torque the screws (2) into the pastic mounting bracket then ensure lamp is secure.

*** NOTE**

Tightening torque: 23.8 lb-ft
(3.3kgm.f)



8. Check if newly installed tail light functions properly.