

**HYUNDAI**NEW THINKING.  
NEW POSSIBILITIES.**Technical Service Bulletin**

GROUP	NUMBER
CAMPAIGN	14-01-009
DATE	MODEL
JANUARY 2014	ACCENT (RB)

**SUBJECT** AUTOMATIC TRANSAXLE TCM UPDATE (SERVICE CAMPAIGN TS5)HYUNDAI  
Global Diagnostic System**ECU Update****★ IMPORTANT****\*\*\* Retail Vehicles Only \*\*\***

Dealers must perform this Campaign whenever an affected vehicle is in the shop for any maintenance or repair.

When a vehicle arrives at the Service Department, access Hyundai Motor America's "Warranty Vehicle Information" screen via WEBDCS to identify open Campaigns.

**Description:** This bulletin provides a procedure to update the TCM software for 2013 Accent 1.6L (RB) vehicles to revise the shift feeling in ECO mode.**Applicable Vehicles:** 2013 MY Accent (RB) 1.6L with automatic transaxles**Applicable Production Date Range:** From: April 1, 2012 through September 21, 2012**GDS INFORMATION:**

EVENT#	DESCRIPTION
Event #289	#289 13MY RB 1.6 ACTIVE ECO ACCELERATION LOGIC IMPROVEMENT - TCM

**WARRANTY INFORMATION:**

MODEL	OP CODE	OPERATION	OP TIME
Accent (RB)	30C083R0	TCM UPGRADE	0.3

**NOTE:** Submit claim on Campaign Claim Entry Screen**ROM ID TABLE:** Verify the TCM ROM ID before updating vehicle software.

MODEL	PCM (TCM) PART NUMBER	TCM ROM ID	
		PREVIOUS	NEW
ACCENT (RB) 1.6L	39110-2BAS1	TRB0Z16NA4 TRB0Z16NA5	TRB0Z16NA6

**GENERAL PRECAUTIONS**

- Connect the USB cable between the GDS and the VCI.
- Connect the 16-pin DLC connector from the VCI into the DLC located under the driver's side dash.



**NOTICE**

**Make sure the battery icon at the bottom right of the GDS laptop shows at least 50%; if not, charge the GDS or attach a battery charger.**

- Turn off all lights (Do not leave the headlight switch in auto mode) and all accessories (including heater/air conditioner/fan, audio, heated seats, rear defroster, etc) to ensure the battery will not be discharged during the update.
- Perform the update with the ignition key in the ON position. (Turn the ignition key to the ON position or press the Start-Stop Button two times without depressing the brake pedal).
- Do not disconnect any cables connected to the vehicle or the GDS during the update.
- Do not start the engine or turn the ignition switch OFF during the update.

**NOTICE**

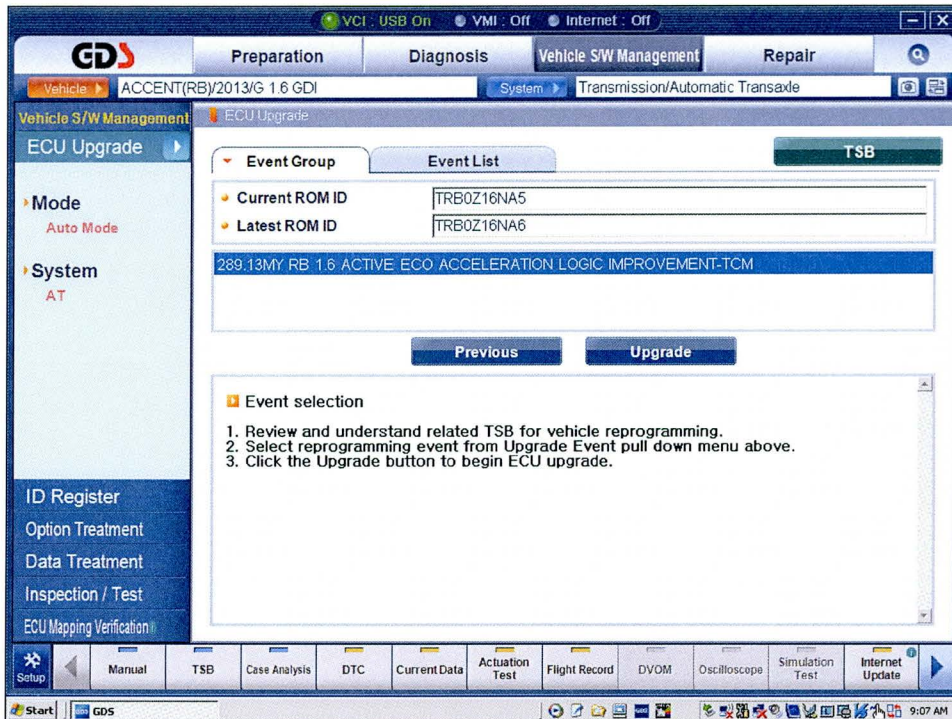
**Confirm your GDS has the most recent version. If not, connect the GDS to an Internet port, open the GDS home page and select "Update". Refer to instructions on [hmaservice.com](http://hmaservice.com) if necessary.**

**NOTICE**

**If you encounter GDS related problems, call the GIT Helpline at 888-437-0308.**

**GDS AUTO MODE TCM UPDATE PROCEDURE**

1. From the GDS home page, select **ECU Upgrade**. If necessary, select the VIN.
2. Select **AT** as the system and then select **OK**.
3. Select **Auto Mode** and then select **Next**.
4. From the **System** tab, select **AT** and then select **OK**. The GDS will read the ROM ID. Confirm the ROM is applicable as shown on Page 1, "ROM ID Information".
5. Update event #**289.13MY RB 1.6 ACTIVE ECO ACCELERATION LOGIC IMPROVEMENT - TCM** will display. Select **Upgrade**.



6. If the screen indicates "**Voltage is OK**", select **OK**. If not, select **CANCEL** and charge the vehicle battery by running the engine for 10 minutes.
7. Updating will occur until 100% is reached on the bar graph. At the prompt, turn the ignition key OFF for 10 seconds, then turn it ON and select **OK**.
8. The GDS will confirm that TCM reprogramming is successfully finished. Select **OK**.
9. If the TCM update was not successful, go to **GDS MANUAL MODE TCM UPDATE PROCEDURE**.
10. Check for any Diagnostic Trouble Codes and erase any DTC.
11. Drive the vehicle to confirm proper operation.

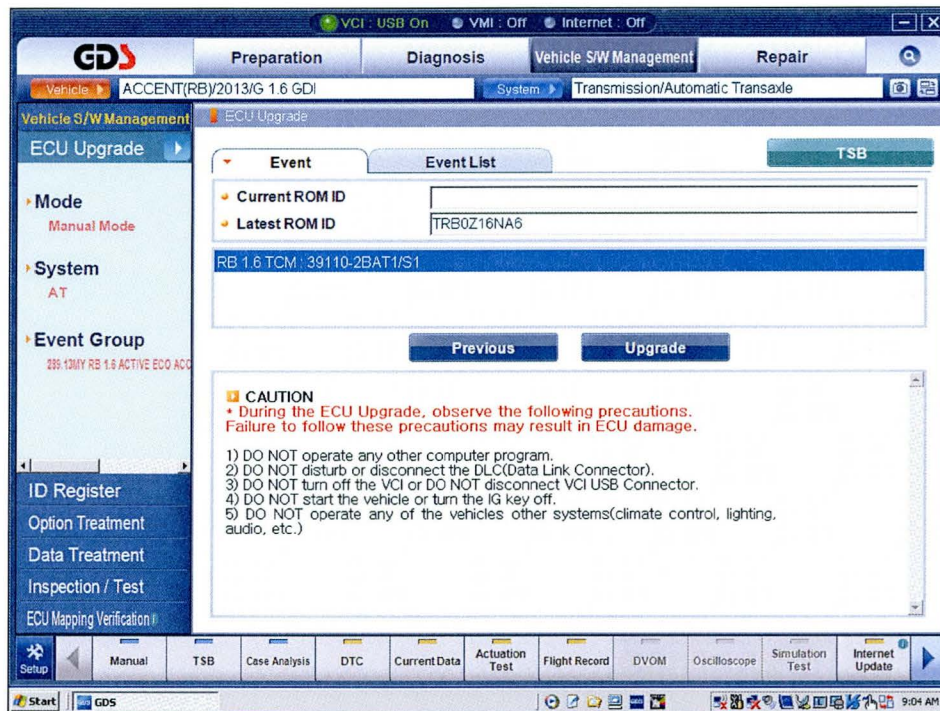
**GDS MANUAL MODE TCM UPDATE PROCEDURE**

**NOTICE**

In the event of AUTO MODE update failure (after the progress bar was initiated):

- You must attempt MANUAL MODE. Use the ECM P/N from the vehicle's ECM label if the correct ECM P/N is not clear from the ROM ID table.
- Replacing an ECM without carefully documenting that a MANUAL MODE update attempt was made will result in a charge back of your claim.

1. From the GDS home page, select **ECU Upgrade**. If necessary, select the VIN.
2. Select **AT** as the system and then select **OK**.
3. Select **Manual Mode** and then select **NEXT**.
4. From the **System** tab, select **AT** and then select **NEXT**.
5. Update event **#289.13MY RB 1.6 ACTIVE ECO ACCELERATION LOGIC IMPROVEMENT - TCM** will display. Select **Next**.
6. Select **RB 1.6 TCM 39110-2BAT1/S1**. Select **Upgrade**.



7. Enter the Password and click **OK**. The part number can be found on the PCM label.

MENU	PASSWORD
RB 1.6 TCM: 39110-2BAT1/S1	1021

8. If the “**Voltage is OK**”, select **OK**. If not, select **CANCEL** and charge the vehicle battery.
9. The remaining steps are the same as Step 7~11 of the Auto Procedure.