

© 2014 Mazda Motor of America, Inc.

Subject: CHECK ENGINE LIGHT ON WITH DTC P2610	Bulletin No: 01-017/14
	Last Issued: 10/17/2014

BULLETIN NOTE

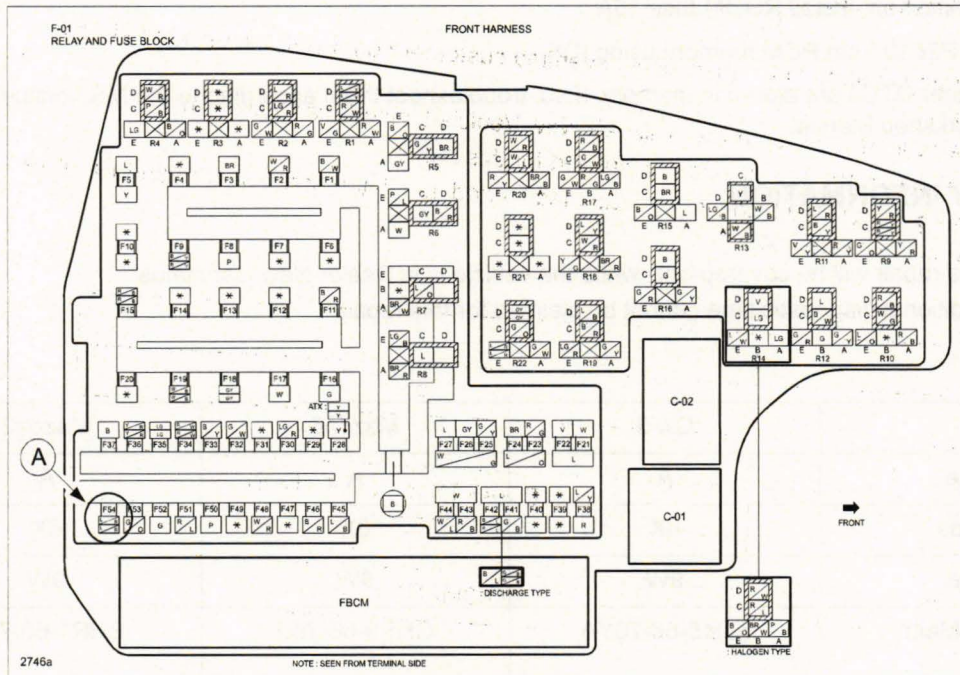
- This bulletin supersedes the previous bulletin 01-001/13, issued on 01/07/13, 01/16/13, and 09/25/13. The **APPLICABLE MODEL(S)/VINS** has been revised.
- Changes are noted below in Red beside the change bar.

APPLICABLE MODEL(S)/VINS

- 2013-**2016** CX-5
- 2014-**2016** Mazda6
- 2014-**2015** Mazda3

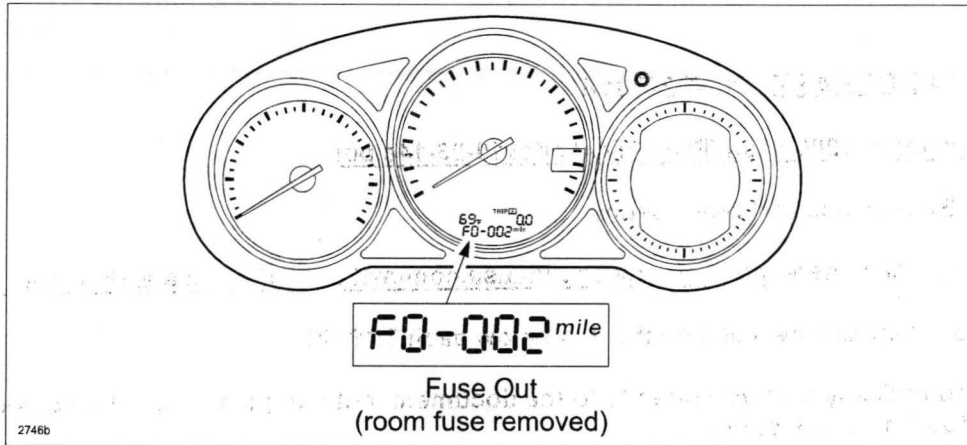
DESCRIPTION

Some vehicles may experience MIL illumination with DTC P2610 (Instrument cluster internal engine off timer performance problem) stored in memory after engine start and room fuse 15A (A) removed.



CONSUMER NOTICE: The information and instructions in this bulletin are intended for use by skilled technicians. Mazda technicians utilize the proper tools/equipment and take training to correctly and safely maintain Mazda vehicles. These instructions should not be performed by "do-it-yourselfers." Customers should not assume this bulletin applies to their vehicle or that their vehicle will develop the described concern. To determine if the information applies, customers should contact their nearest authorized Mazda dealership. Mazda North American Operations reserves the right to alter the specifications and contents of this bulletin without obligation or advance notice. All rights reserved. No part of this bulletin may be reproduced in any form or by any means, electronic or mechanical—including photocopying and recording and the use of any kind of information storage and retrieval system—without permission in writing.

NOTE: The odometer will display "F0-002" during transport mode (room fuse 15A removed). Transport mode is canceled when room fuse 15A is installed or the vehicle odometer is more than 12.4mi (20km).



Vehicles in dealer inventory with this concern should be repaired using the following repair procedure.

REPAIR PROCEDURE

1. Verify DTC P2610 is stored in PCM memory.
2. With the ignition off, install ROOM fuse 15A.
3. Clear DTC P2610 from PCM memory using IDS.
4. Verify no other DTCs are stored in memory. If so, troubleshoot them according to the MS3 online instructions or Workshop Manual.

WARRANTY INFORMATION

NOTE:

- This repair will be covered only while the vehicle is in Dealer New Car status.
- Additional diagnostic time cannot be claimed for this repair.

	CX-5	Mazda6	Mazda3
Warranty Type	A	A	A
Symptom Code	6X	6X	6X
Damage Code	9W	9W	9W
Part Number Main Cause	KD45-66-76YA	GHP9-66-760	BHR1-66-760
Quantity	0	0	0
Operation Number / Labor Hours:	XXH35XRX / 0.2 Hrs.	XXH35XRX / 0.2 Hrs.	XXH35XRX / 0.2 Hrs.