 HYUNDAI NEW THINKING. NEW POSSIBILITIES. Technical Service Bulletin	GROUP CAMPAIGN	NUMBER 14-01-059
	DATE DECEMBER 2014	MODEL(S) VELOSTER (FS)
SUBJECT: ECM UPDATE – 15MY VELOSTER (FS) CHECK ENGINE LIGHT ON WITHOUT ENGINE DTC STORED (SERVICE CAMPAIGN TV9)		



ECU Update

★ IMPORTANT
***** Dealer Stock Vehicles *****

Dealers must perform this Campaign on all affected vehicles prior to customer retail.

When a vehicle arrives at the Service Department, access Hyundai Motor America's "Warranty Vehicle Information" screen via WEBDCS to identify open Campaigns.

Description:

This bulletin provides information related to ECM (Engine Control Module) software update for 15MY VELOSTER(FS) 1.6L GDI vehicles which may experience Check Engine warning light comes on but there is no Engine DTC stored.

Applicable Vehicle: Certain 2015MY Veloster (FS) with 1.6L GDI and 1.6L Turbo-GDI engines

GDS Information:

Event #	Description
335 (for 1.6L GDI Engine)	FS 15MY 1.6GDI CHECK ENGINE MIL WITHOUT ENGINE DTC STORED
337 (for 1.6L Turbo-GDI Engine)	FS 15MY 1.6T-GDI CHECK ENGINE MIL WITHOUT ENGINE DTC STORED

Warranty Information:

Op. Code	Operation	Op. Time
40C091R1	ECM UPGRADE	0.3

NOTE: Submit claim using the Campaign Claim Entry Screen.

SUBJECT ECM UPDATE – 15MY VELOSTER (FS) 1.6L GDI CHECK ENGINE LIGHT ON W/O ENGINE DTC STORED

ROM ID Information Table:

MODEL	ENGINE	T/M	IMMOBILIZER	ECU PART NO.	ECU ROM ID	
					OLD	NEW
FS	1.6L GDI	DCT	Yes (SSB)	39110-2BBR1	GGFS-FFU6FS00H00	GGFS-FFU6FS01H00
			No (Key)	39110-2BBR4	GGFS-FFU6ES00H00	GGFS-FFU6ES01H00
		MT	Yes (SSB)	39110-2BBR5	GGFS-FFU6FS01600	GGFS-FFU6FS02600
			No (Key)	39110-2BBR8	GGFS-FFU6ES01600	GGFS-FFU6ES02600
	1.6L Turbo-GDI	MT	Yes (SSB)	39118-2BBR6	GTFS-FNU6FS01600	GTFS-FNU6FS02600
			No (Key)	39118-2BBS6	GTFS-FNU6ES01600	GTFS-FNU6ES02600
		AT	Yes (SSB)	39118-2BBR2	GTFS-FNU6QS00C00	GTFS-FNU6QS01C00
			No (Key)	39118-2BBS2	GTFS-FNU6PS00C00	GTFS-FNU6PS01C00

Note: SSB = Stop Start Button

General Precautions:

- Connect the USB cable between the GDS and the VCI.
- Connect the 16-pin DLC connector from the VCI into the DLC located under the driver's side dash.



NOTICE

Make sure the battery icon at the bottom right of the GDS laptop shows at least 50%; if not, charge the GDS or attach a battery charger.

- Turn off all lights (Do not leave the headlight switch in auto mode) and all accessories (including heater/air conditioner/fan, audio, heated seats, rear defroster, etc.) to ensure the battery will not be discharged during the update.
- Perform the update with the ignition key in the ON position.
- Do not disconnect any cables connected to the vehicle or the GDS during the update.
- Do not start the engine or turn the ignition switch OFF during the update.

NOTICE

Confirm your GDS has the most recent version. If not, connect the GDS to an Internet port, open the GDS home page and select "Update". Refer to instructions on hmaservice.com if necessary.

If you encounter GDS related problems, call the GIT Helpline at 888-437-0308.

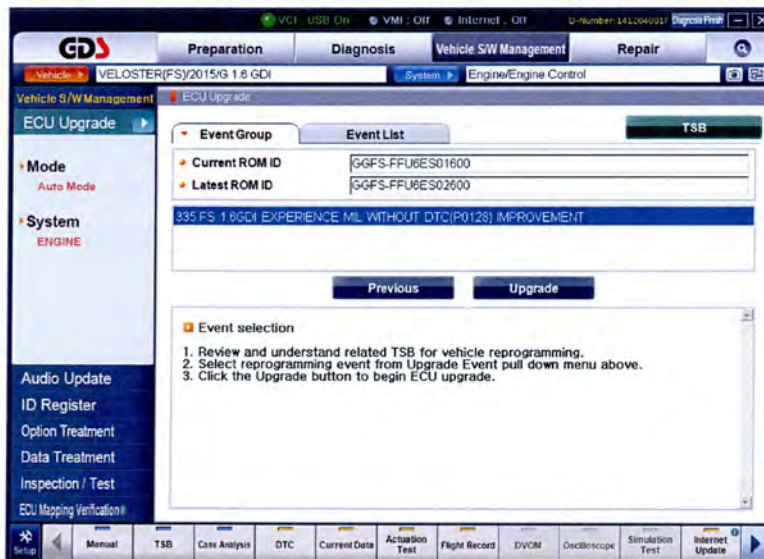
Service Procedure:

GDS Auto Mode ECM Update Procedure

1. From the GDS home page, select **ECU Upgrade**. If necessary, select the VIN.
2. Select **Engine** as the system and then select **OK**.
3. Select **Auto Mode** and then select **Next**.
4. From the **System** tab, select **Engine** and then select **OK**. The GDS will read the ROM ID. Confirm the ROM is applicable as shown on Page 1, “ROM ID Information”.



5. Select update event as listed on the **GDS Event list of page-1**. Select **Upgrade**.



6. If the screen indicates “**Voltage is OK**” (voltage > 12volts), select **OK**. If not, select **CANCEL** and charge the vehicle battery by running the engine for 10 minutes.
7. Updating will occur until 100% is reached on the bar graph. At the prompt, turn the ignition key off for 10 seconds then turn it on and select **OK**.
8. The GDS will confirm that ECM reprogramming is successfully finished. Select **OK**.
9. If the ECM update was not successful, go to **GDS Manual Mode ECM update Procedure**.
10. Check for DTC in all systems and Erase All DTC that stored due to loss of CAN communication during the ECM Update. (**NOTE: DTC P0128 will appear along with the normal CAN DTC from ECU Update, but the P0128 will not reappear after erased**).
11. Turn **Off ignition 30 seconds** then turn **On** before going to engine start.
12. Start the engine to confirm proper operation.
13. Clear DTC in the BlueLink system per instructions of TSB 12-BE-005-2.

GDS Manual Mode ECM Update Procedure

NOTICE

In event of Auto Mode ECU Update failure:

- You must attempt **Manual Mode**. Use the ECM P/N from the vehicle's ECM label if it is not clear from the ROM ID Table as to the correct ECM P/N to use for your vehicle.
- Replacing an ECM without carefully documenting that a **Manual Mode** update attempt was made, will result in claims charge back.

NOTICE

- GDS Manual Mode is intended for recovery of an ECM Update should it begin but then later fail in process in the Auto Mode.
- The ECM connectors must be disconnected for 15 minutes to reset its contents then perform this Manual Mode Update.
- Do not force Manual Mode if you get an error in Auto Mode that the vehicle's current ROM ID did not apply.
- It is critical to identify the correct ECM Part Number in the PASSWORD table or the ECM may be permanently damaged. It is recommended to remove ECM and read the part number from the label to confirm.

1. From the GDS home page, select **ECU Upgrade**. If necessary, select the VIN.
2. Select **Engine** as the system and then select **OK**.
3. Select **Manual Mode** and then select Next.
4. From the **System** tab, select **Engine** and then select **OK**.
5. Select update event as per the **GDS Event List of page-3**, then select **Upgrade**.
6. Be certain to enter the exact appropriate password from the table below and select **OK**. **See the important NOTICE above.**
7. The remaining steps are same as Steps 6~13 of the **Auto Procedure**.

1.6L GDI : Event #335

MENU	PASSWORD
FS GDI DCT NON IMMO 39110-2BBR4	1024
FS GDI MT NON IMMO 39110-2BBR8	1028
FS GDI DCT IMMO 39110-2BBR1	1021
FS GDI MT IMMO 39110-2BBR5	1025

1.6L Turbo-GDI : Event #337

MENU	PASSWORD
FS T-GDI MT NON IMMO 39118-2BBS6	1826
FS T-GDI AT NON IMMO 39118-2BBS2	1822
FS T-GDI MT IMMO 39118-2BBR6	1827
FS T-GDI AT IMMO 39118-2BBR2	1823

NOTE: IMMO=Start Stop Button, NON IMMO is Key Start

**HYUNDAI**NEW THINKING.
NEW POSSIBILITIES.**Technical Service Bulletin**GROUP
CAMPAIGNNUMBER
14-01-060DATE
DECEMBER 2014MODEL(S)
ACCENT (RB)

SUBJECT: ECM UPDATE – 15MY ACCENT (RB) 1.6L GDI CHECK ENGINE LIGHT ON
WITHOUT ENGINE DTC STORED
(SERVICE CAMPAIGN TW0)

HYUNDAI
Global Diagnostic System**ECU Update****★ IMPORTANT******* Dealer Stock Vehicles *****

Dealers must perform this Campaign on all affected vehicles prior to customer retail.

When a vehicle arrives at the Service Department, access Hyundai Motor America's "Warranty Vehicle Information" screen via WEBDCS to identify open Campaigns.

Description:

This bulletin provides information related to ECM (Engine Control Module) software update for 15MY ACCENT (RB) 1.6L GDI vehicles which may experience Check Engine warning light comes on but there is no Engine DTC stored.

Applicable Vehicle: Certain 2015MY Accent (RB) with 1.6L GDI engine**GDS Information:**

Event #	Description
336	RB 15MY 1.6GDI CHECK ENGINE MIL WITHOUT ENGINE DTC STORED

Warranty Information:

Op. Code	Operation	Op. Time
40C095R1	ECM UPGRADE	0.3

NOTE: Submit claim using the Campaign Claim Entry Screen.

SUBJECT ECM UPDATE – 15MY ACCENT (RB) 1.6L GDI CHECK ENGINE LIGHT ON W/O ENGINE DTC STORED

ROM ID Information Table:

MODEL	ENGINE	T/M	ECU PART NO.	ECU ROM ID	
				OLD	NEW
RB	1.6L GDI	MT	39110-2BRB0	GGRB-FNU6ES00600	GGRB-FNU6ES01600
		AT	39110-2BRB5	GGRB-FNU6PS00C00	GGRB-FNU6PS01C00

General Precautions:

- Connect the USB cable between the GDS and the VCI.
- Connect the 16-pin DLC connector from the VCI into the DLC located under the driver's side dash.



NOTICE

Make sure the battery icon at the bottom right of the GDS laptop shows at least 50%; if not, charge the GDS or attach a battery charger.

- Turn off all lights (Do not leave the headlight switch in auto mode) and all accessories (including heater/air conditioner/fan, audio, heated seats, rear defroster, etc.) to ensure the battery will not be discharged during the update.
- Perform the update with the ignition key in the ON position.
- Do not disconnect any cables connected to the vehicle or the GDS during the update.
- Do not start the engine or turn the ignition switch OFF during the update.

NOTICE

Confirm your GDS has the most recent version. If not, connect the GDS to an Internet port, open the GDS home page and select "Update". Refer to instructions on hmaservice.com if necessary.

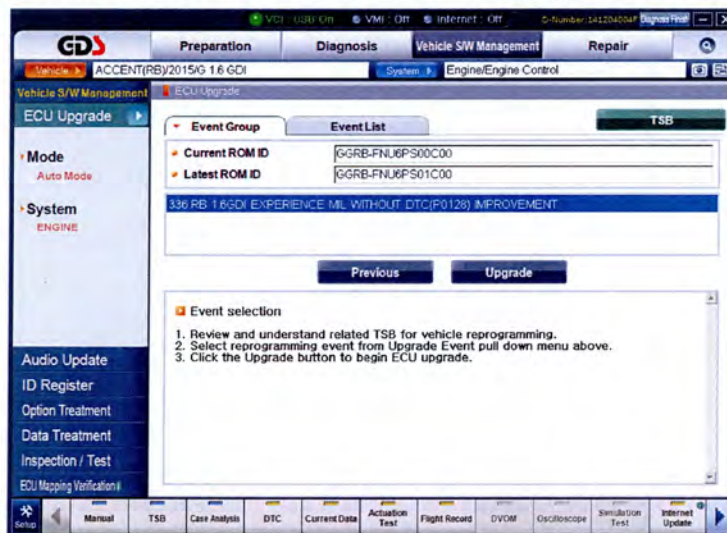
If you encounter GDS related problems, call the GIT Helpline at 888-437-0308.

1. From the GDS home page, select **ECU Upgrade**. If necessary, select the VIN.
2. Select **Engine** as the system and then select **OK**.
3. Select **Auto Mode** and then select **Next**.

- From the **System** tab, select **Engine** and then select **OK**. The GDS will read the ROM ID. Confirm the ROM is applicable as shown on Page 1, “ROM ID Information”.



- Select update event as listed on the **GDS Event list of page-1**. Select **Upgrade**.



- If the screen indicates “**Voltage is OK**” (voltage > 12volts), select **OK**. If not, select **CANCEL** and charge the vehicle battery by running the engine for 10 minutes.
- Updating will occur until 100% is reached on the bar graph. At the prompt, turn the ignition key off for 10 seconds then turn it on and select **OK**.
- The GDS will confirm that ECM reprogramming is successfully finished. Select **OK**.
- If the ECM update was not successful, go to **GDS Manual Mode ECM update Procedure**.
- Check for DTC in all systems and Erase All DTC that stored due to loss of CAN communication during the ECM Update. (**NOTE: DTC P0128 will appear along with the normal CAN DTC from ECU Update, but the P0128 will not reappear after erased**).
- Turn **Off ignition 10 seconds** then turn **On** before going to engine start.
- Start the engine to confirm proper operation.

GDS Manual Mode ECM Update Procedure

NOTICE

In event of Auto Mode ECU Update failure:

- You must attempt **Manual Mode**. Use the ECM P/N from the vehicle's ECM label if it is not clear from the ROM ID Table as to the correct ECM P/N to use for your vehicle.
- Replacing an ECM without carefully documenting that a **Manual Mode** update attempt was made, will result in claims charge back.

NOTICE

- GDS Manual Mode is intended for recovery of an ECM Update should it begin but then later fail in process in the Auto Mode.
- The ECM connectors must be disconnected for 15 minutes to reset its contents then perform this Manual Mode Update.
- Do not force Manual Mode if you get an error in Auto Mode that the vehicle's current ROM ID did not apply.
- It is critical to identify the correct ECM Part Number in the PASSWORD table or the ECM may be permanently damaged. It is recommended to remove ECM and read the part number from the label to confirm.

1. From the GDS home page, select **ECU Upgrade**. If necessary, select the VIN.
2. Select **Engine** as the system and then select **OK**.
3. Select **Manual Mode** and then select Next.
4. From the **System** tab, select **Engine** and then select **OK**.
5. Select update event as per the **GDS Event List of page-3**, then select **Upgrade**.
6. Be certain to enter the exact appropriate password from the table below and select **OK**. **See the important NOTICE above.**
7. The remaining steps are same as Steps 6~12 of the **Auto Procedure**.

MENU	PASSWORD
RB GDI MT NON IMMO 39110-2BRB0	1020
RB GDI AT NON IMMO 39110-2BRB5	1025