

SB-10056505-7194

<b style="font-size: 1.2em; margin-left: 10px;">HYUNDAI NEW THINKING. NEW POSSIBILITIES. <h2 style="text-align: center; margin: 0;">Technical Service Bulletin</h2>	GROUP DUAL-CLUTCH TRANSMISSION	NUMBER 14-AT-011
	DATE JULY, 2014	MODEL(S) VELOSTER (FS)
SUBJECT: DUAL CLUTCH TRANSAXLE TCM SOFTWARE UPDATE		

ECU Update

Description: This bulletin provides a procedure to update the TCM software on certain 2012 Veloster (FS) vehicles equipped with Dual Clutch transmission to reduce gear crunch noise when decelerating to a stop.

Applicable Vehicles: Certain 2012 MY Veloster (FS) with 1.6L engines and automatic Dual Clutch transaxles.

GDS Information:

Event #	Description
Event #258 (or later compatible event)*	FS 1.6 GDI TCM Update

* The latest event that appears in the TCM Auto Mode event list for the particular vehicle.

Warranty Information:

Model	Op. Code	Operation	Op. Time	Causal P/N	Nature Code	Cause Code
FS	95440F82	TCM Upgrade	0.3	95440-2A000	N29	C40

NOTE: Use the applicable TCM P/N listed in the ROM ID Information Table from the following page.

NOTICE

In event of Auto Mode ECU Update failure:

- You must attempt **Manual Mode**. Use the TCM P/N from the vehicle's TCM label if it is not clear from the ROM ID table as to the correct TCM P/N to use for your vehicle.
- Replacing a TCM without carefully documenting that a **Manual Mode** update attempt was made will result in claims charge back.

Circulate To: General Manager, Service Manager, Parts Manager, Warranty Manager, Service Advisors, Technicians, Body Shop Manager, Fleet Repair

SUBJECT: DUAL CLUTCH TRANSAXLE TCM SOFTWARE UPDATE

ROM ID Information Table:

ECU Part #	T/M	Previous	ROM ID New
95440-2A000	DCT	DFS0Z16NA0 DFS0Z16NA1 DFS0Z16NA2 DFS0Z16NA3 DFS0Z16NA4 DFS0Z16NA5	DFS0Z16NA8

NOTE: Verify the TCM ROM ID before updating the vehicle's software.

General Precautions:

- Connect the USB cable between the GDS and the VCI.
- Connect the 16-pin DLC connector from the VCI into the DLC located under the driver's side dash.



NOTICE

Make sure the battery icon at the bottom right of the GDS laptop shows at least 50%; if not, charge the GDS or attach a battery charger.

- Turn off all lights (Do not leave the headlight switch in auto mode) and all accessories (including heater/air conditioner/fan, audio, heated seats, rear defroster, etc) to ensure the battery will not be discharged during the update.
- Perform the update with the ignition key in the ON position.
- Do not disconnect any cables connected to the vehicle or the GDS during the update.
- Do not start the engine or turn the ignition switch OFF during the update.

NOTICE

Confirm your GDS has the most recent version. If not, connect the GDS to an Internet port, open the GDS home page and select "Update". Refer to instructions on hmaservice.com if necessary.

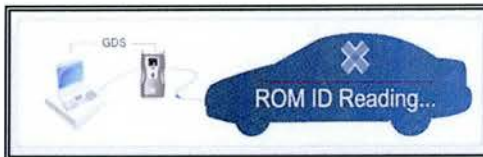
If you encounter GDS related problems, call the GIT Helpline at 888-437-0308.

SUBJECT:**DUAL CLUTCH TRANSAXLE TCM SOFTWARE UPDATE****Service Procedure:****NOTICE****DCT Vehicles - Reset operation after ECU Update required:**

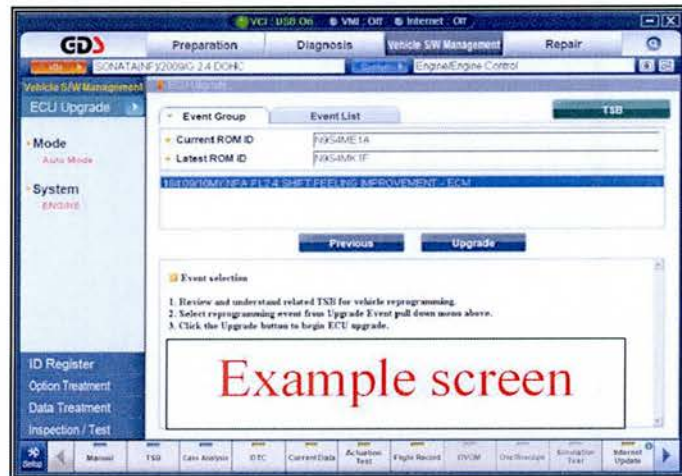
- After ECU Update there is a prompt to turn OFF ignition for 30 seconds then back ON.
- This is required to reset the DCT and if not done the DCT may become inoperative.

GDS Auto Mode TCM Update Procedure

1. From the GDS home page, select ECU Upgrade. If necessary, select the VIN.
2. Select Engine as the system and then select OK.
3. Select Auto Mode and then select Next.
4. From the System tab, select transmission and then select OK. The GDS will read the ROM ID. Confirm the ROM is applicable as shown on Page 2, "ROM ID Information".



5. Select update event as listed on the GDS Event list of page-1. Select Upgrade.



6. If the screen indicates "Voltage is OK" (voltage > 12volts), select OK. If not, select CANCEL and charge the vehicle battery by running the engine for 10 minutes.
7. Updating will occur until 100% is reached on the bar graph.
8. When prompted turn OFF ignition for 30 seconds then turn ON before going to engine start.
NOTE: Failure to perform this 30 second reset may result in the DCT being inoperative.
9. The GDS will confirm that TCM reprogramming is successfully finished. Select OK.
10. If the TCM update was not successful, go to GDS Manual Mode TCM update Procedure.
11. Check for DTC in all systems and Erase All DTC that stored due to loss of CAN

SUBJECT: DUAL CLUTCH TRANSAXLE TCM SOFTWARE UPDATE

- communication during the TCM Update.
12. Start the engine to confirm proper operation.
 13. Clear DTC in the BlueLink system per instructions of TSB 12-BE-005-2.

GDS Manual Mode ECU Update Procedure

NOTICE

- GDS Manual Mode is intended for recovery of an TCM Update should it begin but then later fail in process in the Auto Mode.
- The TCM connectors must be disconnected for 15 minutes to reset its contents then perform this Manual Mode Update.
- Do not force Manual Mode if you get an error in Auto Mode that the vehicle's current ROM ID did not apply.
- It is critical to identify the correct TCM Part Number in the PASSWORD table or the TCM may be permanently damaged. It is recommended to remove TCM and read the part number from the label to confirm.

1. From the GDS home page, select **ECU Upgrade**. If necessary, select the VIN.
2. Select **Transmission** as the system and then select **OK**.
3. Select **Manual Mode** and then select Next.
4. From the **System** tab, select **Engine** and then select **OK**.
5. Select update event as per the **GDS Event List of page-1**, then select **Upgrade**.
6. Be certain to enter the exact appropriate password from the table on the next page and select **OK**. **See the important NOTE above.**
7. The remaining steps are same as Steps 6~13 of the Auto Procedure.

MENU	PASSWORD	Comments
FS 1.6 DCT TCM 95440-2A000	2000	N/A