


# SB-10056504-5192

 <b>HYUNDAI</b>   NEW THINKING. NEW POSSIBILITIES.	GROUP <b>CAMPAIGN</b>	NUMBER <b>14-01-037</b>
	DATE <b>SEPTEMBER 2014</b>	MODEL(S) <b>SONATA (LF)</b>
<b>Technical Service Bulletin</b>		
SUBJECT: <b>LANE DEPARTURE WARNING SYSTEM (LDWS) SOFTWARE UPDATE (SERVICE CAMPAIGN TU0)</b>		

## ★ IMPORTANT

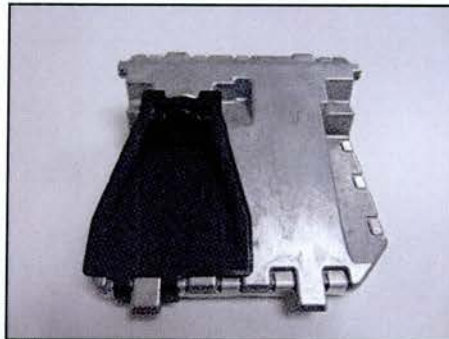
### \*\*\* Dealer Stock and Retail Vehicles \*\*\*

Dealers must perform this Service Campaign on all affected vehicles prior to customer retail delivery and whenever an affected vehicle is in the shop for any maintenance or repair.

When a vehicle arrives at the Service Department, access Hyundai Motor America's "Warranty Vehicle Information" screen via WEBDCS to identify open Campaigns.

**Description:** This bulletin provides the procedure to update the LDWS module software on certain Sonata (LF) Vehicles. The update corrects an intermittent false illumination of "Front Collision Warning", "Check LDWS", "Check FCW System", and "Check High Beam Assist System" on the instrument cluster.

- The following DTC(s) may be stored:
  - ✓ C1672: Steering Angle Signal Invalid LDWS System.



**Applicable Vehicles:** 2015 Sonata (LF) Equipped with Lane Departure Warning System (LDWS).

## ROM ID INFORMATION TABLE

Model	System	ROM ID	
		Previous	New
2015 Sonata (LF)	LDWS	1.1, 1.2, 1.3, 1.4	1.5

## Warranty Information:

OP CODE	OPERATION	OP TIME
40CA09R0	LDWS UPGRADE	0.3 M/H

**NOTE:** Submit Claim on Campaign Claim Entry Screen.

Circulate To: General Manager, Service Manager, Parts Manager, Warranty Manager, Service Advisors, Technicians, Body Shop Manager, Fleet Repair

**GENERAL PRECAUTIONS:**

**NOTICE**

**Make sure the battery icon at the bottom right of the GDS laptop shows at least 50%. If not, charge the GDS or attach a battery charger.**

- Make sure the GDS is updated to the latest version using internet smart update.
- Make sure the vehicle's battery has reasonable charge. If the vehicle has been in storage, run the engine to ensure an adequate battery charge for reliable results.
- Turn off all lights (do not leave the headlight switch in auto mode) and all accessories (including heater/air conditioner/fan for both front and rear(if equipped), audio, heated seats, rear defroster, etc.) to ensure the battery will not be discharged during the procedure.
- Perform the procedure with the ignition key in the ON position. (Turn ignition key to the ON position or press the Start-Stop button 2 times without depressing the brake pedal).
- Do not disconnect any cables connected to the vehicle or the GDS during the procedure.
- Do not start the engine or turn the ignition switch OFF during the procedure.

**SERVICE PROCEDURE:**

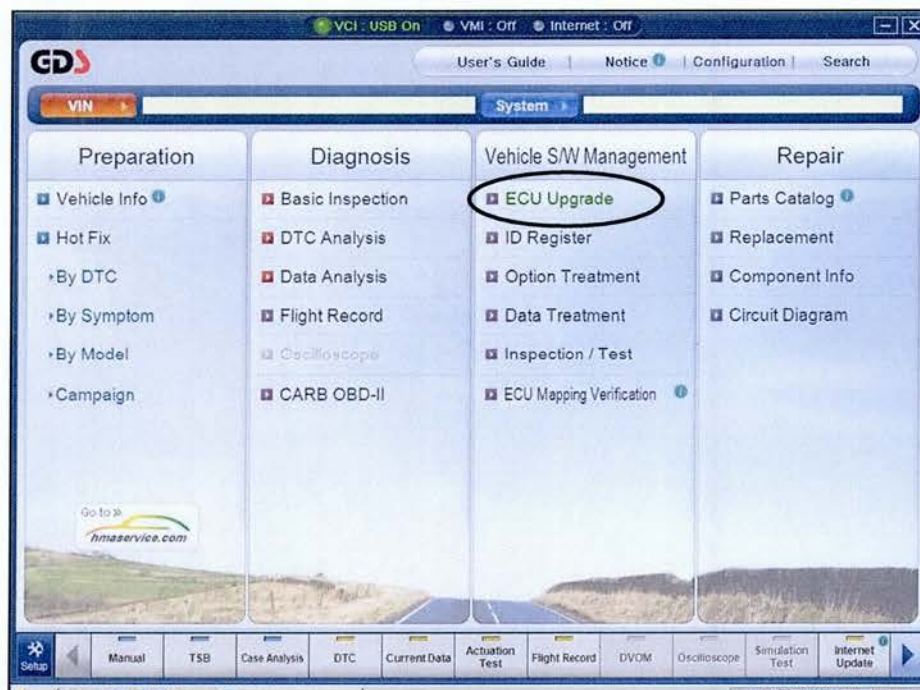
1. Connect the USB cable between the GDS and the VCI.
2. Connect the 16-pin DLC connector from the VCI into the DLC located under the driver's side dash (within the fuse box).
3. Press the power button on the VCI to turn it **ON**.
4. Turn the ignition key to the **ON** position, or press the Start-Stop button 2 times without depressing the brake pedal.





## **GDS AUTO MODE LDWS UPDATE PROCEDURE**

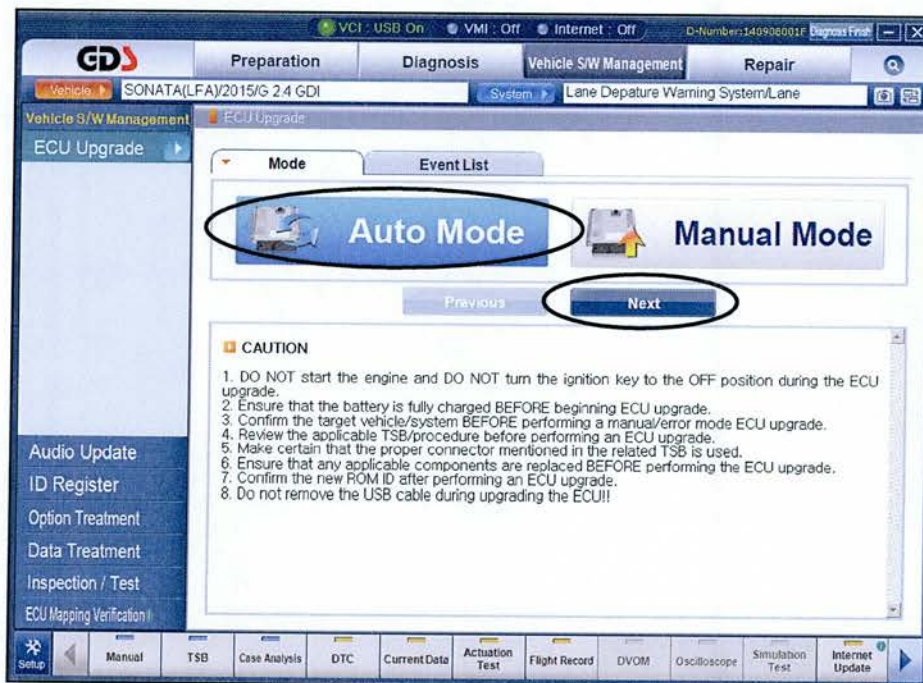
1. From the GDS home page, select **ECU UPGRADE**. After selecting **ECU UPGRADE**, if the GDS does not automatically detect the VIN, manually enter the VIN number.



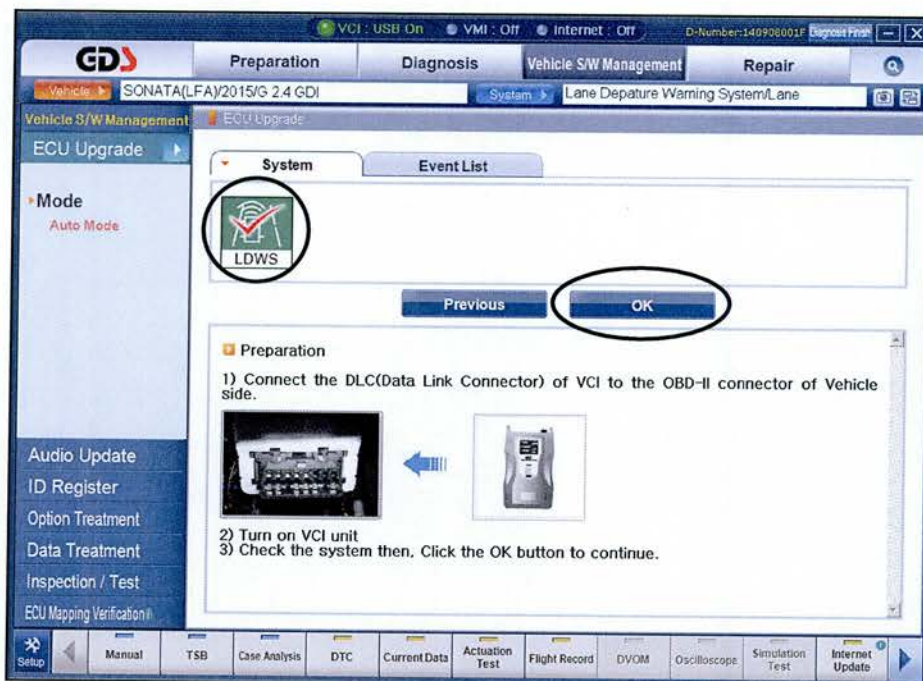
2. Select **LDWS** as the system and then select **OK**.



3. Select **AUTO MODE** and then **NEXT**.



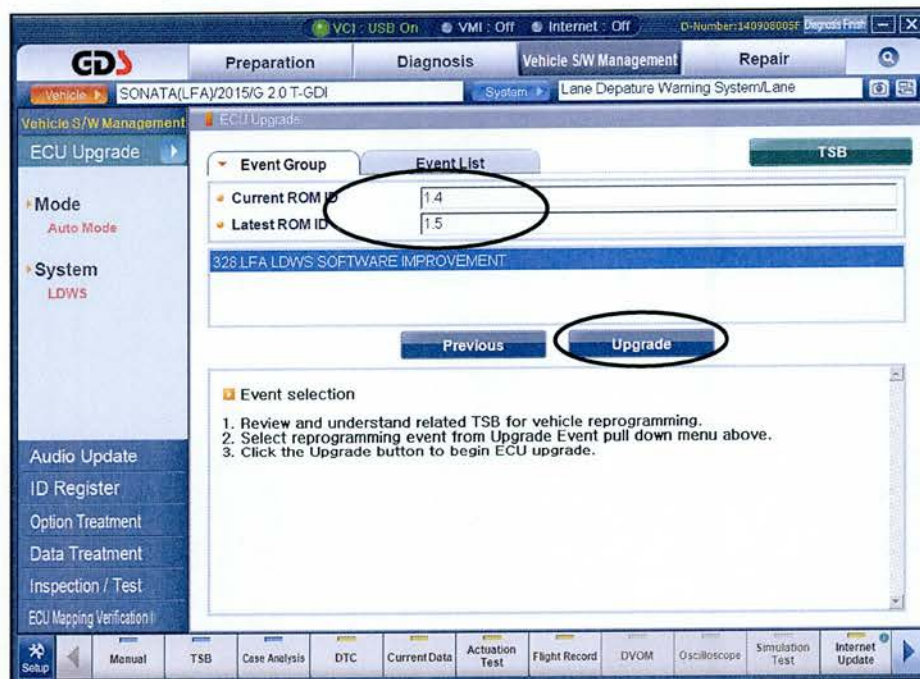
4. Select **LDWS** and then select **OK**.





**SUBJECT: LANE DEPARTURE WARNING SYSTEM (LDWS) SOFTWARE UPDATE**

5. The GDS will read the current ROM ID. Confirm the current ROM ID is applicable as shown on Page 1, "ROM ID Information Table". Select **UPGRADE**.

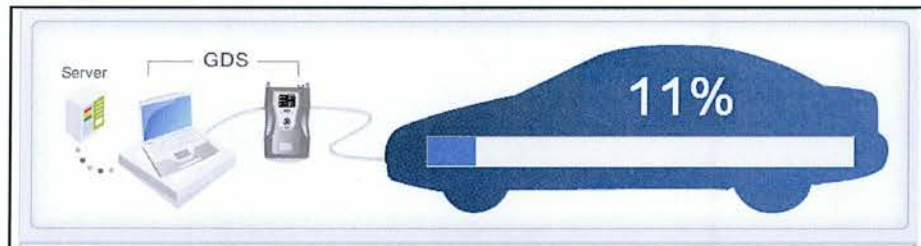


6. If the screen indicates "**Voltage is OK**" (voltage 12 volts or greater), select **OK**. If not, select **CANCEL** and charge the vehicle battery by running the engine for 10 minutes.

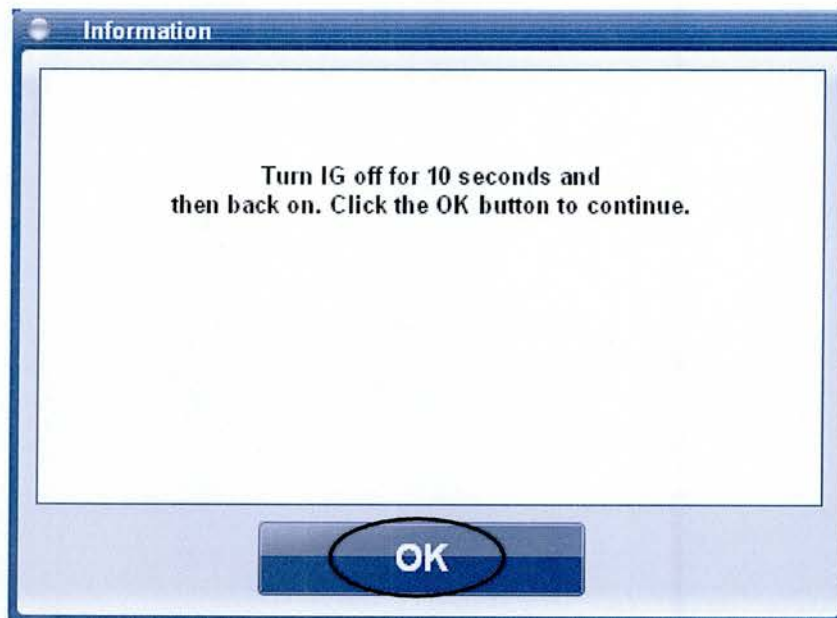


**SUBJECT: LANE DEPARTURE WARNING SYSTEM (LDWS) SOFTWARE UPDATE**

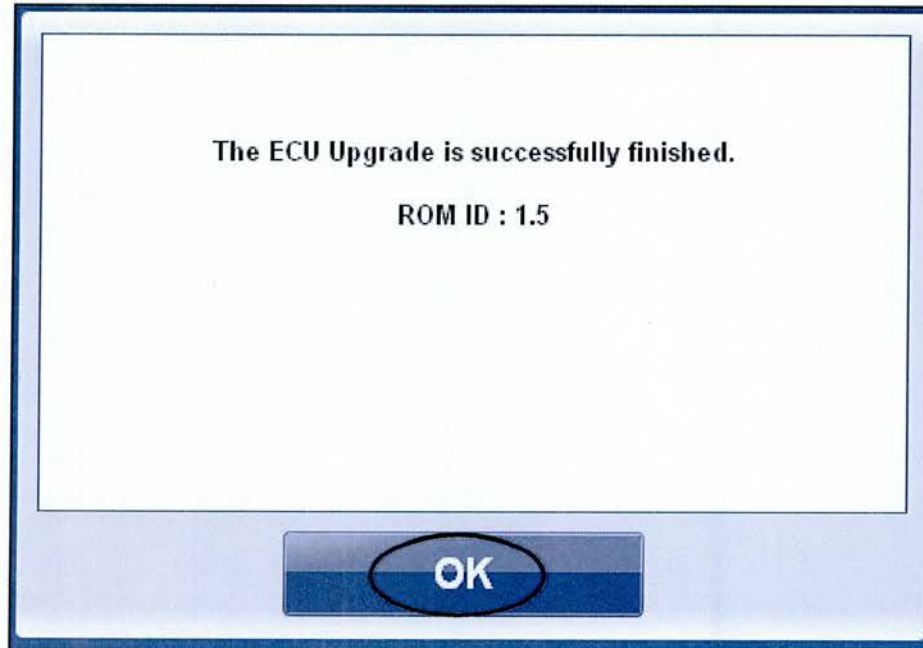
7. Update will begin and the progress of the update will appear on the bar graph. It will take approximately 5 minutes until the progress bar reaches 100%.



8. When the update is complete, wait for a pop up screen shown below. Turn the ignition **OFF for 10 seconds**, and then turn it back **ON** (Press the Start-Stop button 2 times without depressing the brake pedal). Select **OK**.



9. Wait for a pop up screen indicating the update was successful. Select **OK**.



10. Check if any incidental **Diagnostic Codes (DTC)** have been created by the update.
11. Clear any DTCs in the Blue Link system per instructions of TSB 12-BE-005-2.
12. Confirm operation of LDWS system.

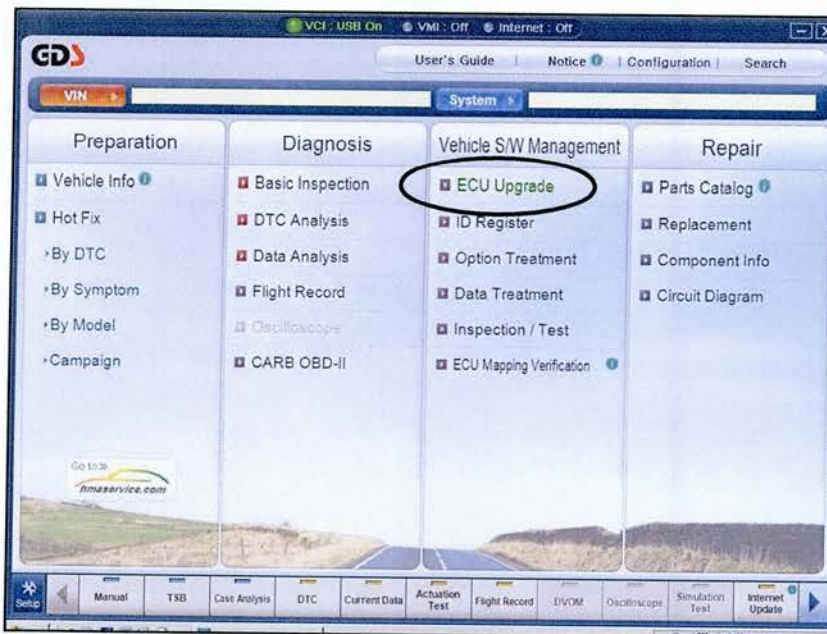


## GDS MANUAL MODE LDWS UPDATE PROCEDURE

### NOTICE

- The manual update should be performed only when the automatic update fails.
- If automatic update fails, turn the ignition key OFF for about 10 seconds, turn it back ON and then perform the manual update.

1. From the GDS home page, select **ECU UPGRADE**. After selecting **ECU UPGRADE**, if the GDS does not automatically detect the VIN, manually enter the VIN number.



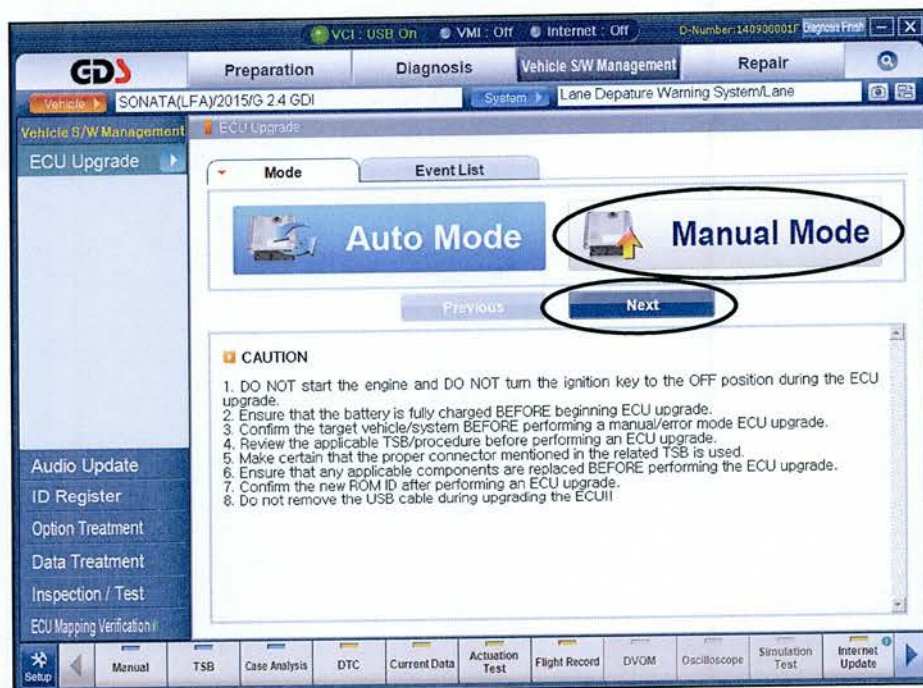
2. Select **LDWS** as the system and then select **OK**.



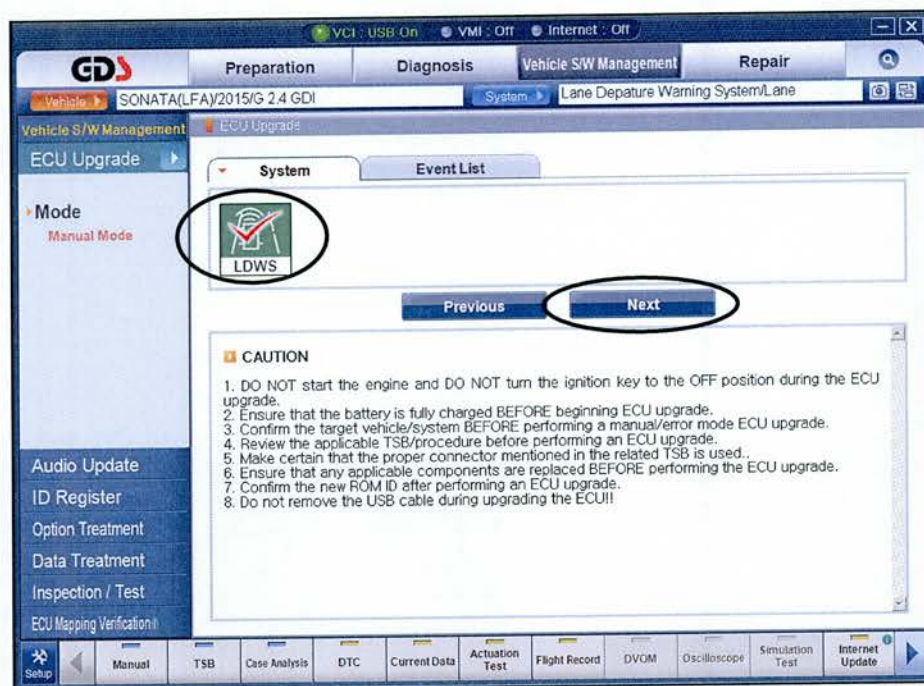


## SUBJECT: LANE DEPARTURE WARNING SYSTEM (LDWS) SOFTWARE UPDATE

3. Select **MANUAL MODE** and then **NEXT**.

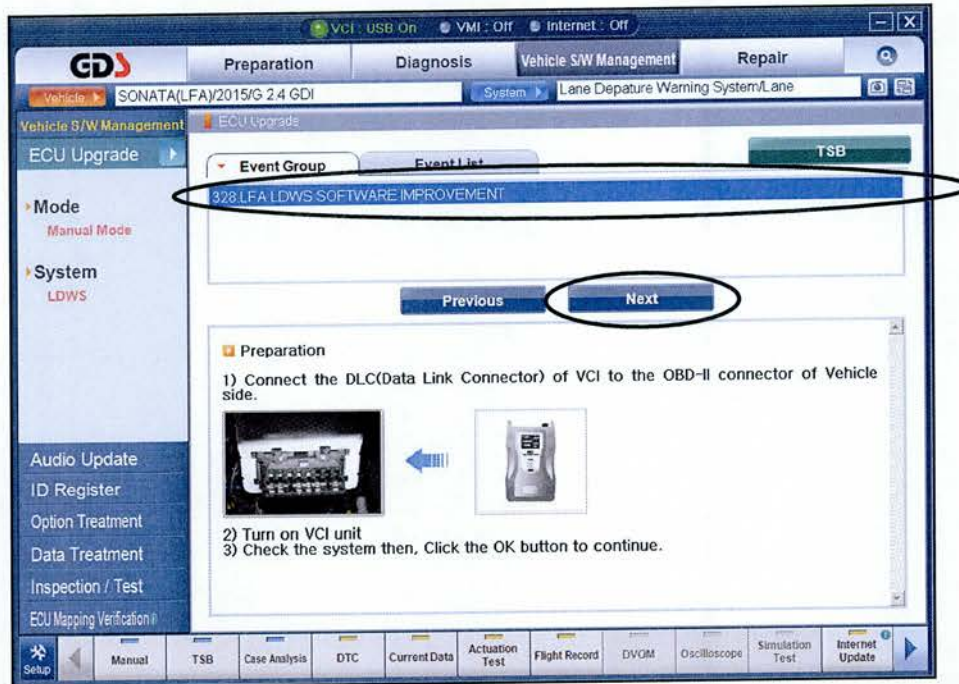


4. Select **LDWS** and then **NEXT**.



## SUBJECT: LANE DEPARTURE WARNING SYSTEM (LDWS) SOFTWARE UPDATE

5. Select the update event “**328 LFA LDWS SOFTWARE IMPROVEMENT**” and then select **NEXT**.



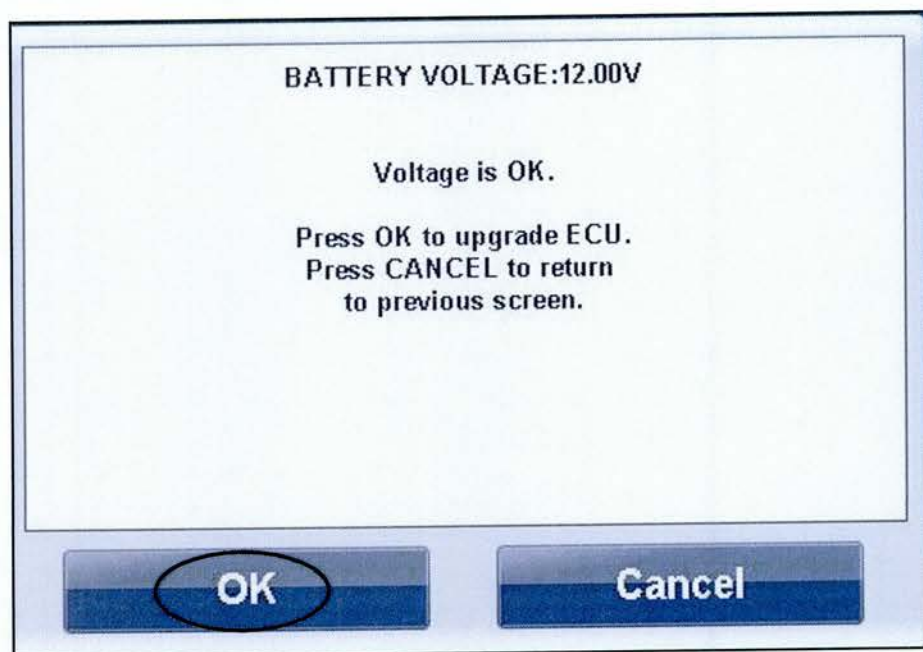
6. Select “**328 LFA LDWS SOFTWARE IMPROVEMENT**” on the screen, and then select **UPGRADE**. A pop up screen will request for a Password. Enter **1000** and then select **OK**.



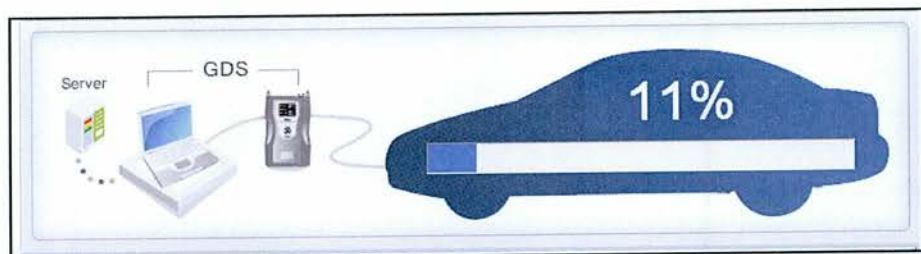


**SUBJECT: LANE DEPARTURE WARNING SYSTEM (LDWS) SOFTWARE UPDATE**

7. If the screen indicates **"Voltage is OK"** (voltage 12volts or greater), select **OK**. If not, select **CANCEL** and charge the vehicle battery by running the engine for 10 minutes.

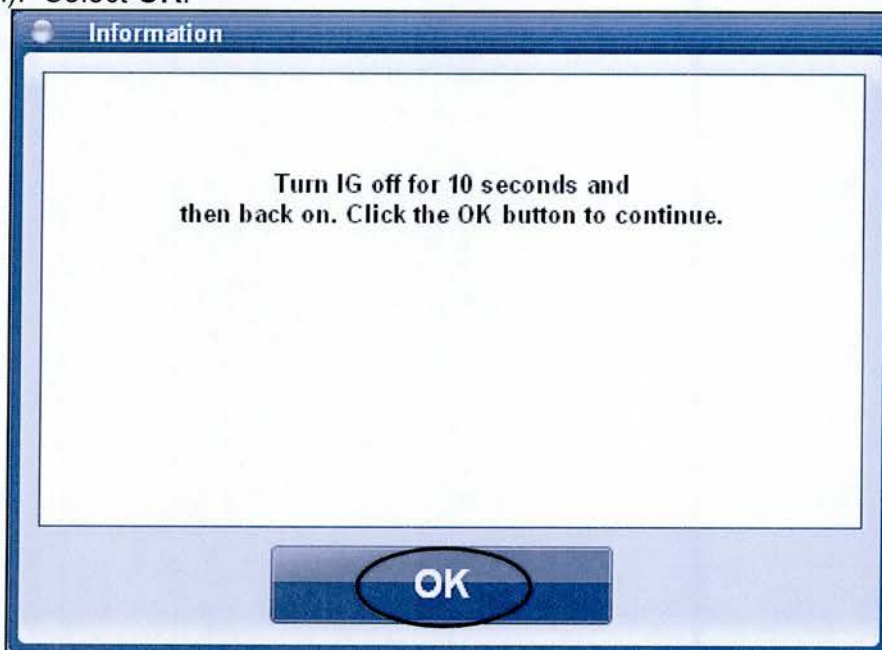


8. Update will begin and the progress of the update will appear on the bar graph. It will take approximately 5 minutes until the progress bar reaches 100%.

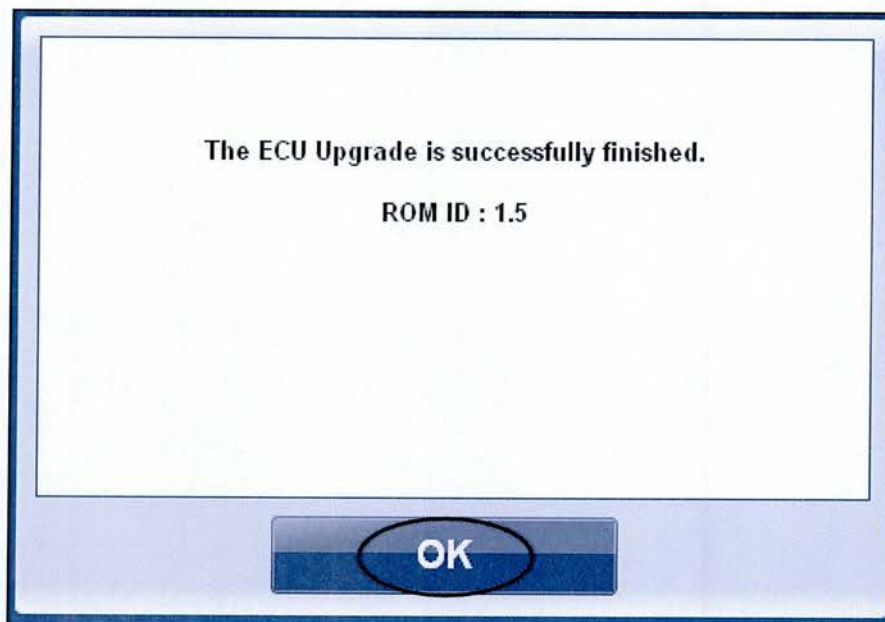


**SUBJECT: LANE DEPARTURE WARNING SYSTEM (LDWS) SOFTWARE UPDATE**

9. When the update is complete, wait for a pop up screen shown below. Turn the ignition **OFF** for **10 seconds**, and then turn it back **ON** (Press the Start-Stop button 2 times without depressing the brake pedal). Select **OK**.



10. Wait for a pop up screen indicating the update was successful. Select **OK**.



11. Check if any incidental Diagnostic Codes (DTC) have been created by the update, and then clear all the DTC (s).
12. Clear any DTCs in the Blue Link system per instructions of TSB 12-BE-005-2.
13. Confirm operation of the LDWS system.