


SB-10056503-4806

| | | |
|---|---------------------------------|---------------------------------|
|  <b style="font-size: 1.2em;">HYUNDAI NEW THINKING. NEW POSSIBILITIES. <b style="font-size: 1.1em;">Technical Service Bulletin | GROUP BODY ELECTRICAL | NUMBER 14-BE-013 |
| | DATE SEPTEMBER 2014 | MODEL(S) GENESIS (DH) |
| SUBJECT: 2015MY GENESIS (DH) LANE KEEPING ASSIST SYSTEM CALIBRATION | | |

Description: This bulletin describes the Lane Keeping Assist System (LKAS) calibration procedure for the 2015MY Genesis (DH). Certain vehicles may display the following DTC's if the LKAS needs to be calibrated:

- C272146 – System Calibration Required.
- C272246 – System Out Of Calibration.



Applicable Vehicles: All 2015MY Genesis (DH) equipped with Lane Keeping Assist System.

Warranty Information:

| Model | Op. Code | Operation | Causal Part # | Op. Time |
|--------------|----------|---|---------------|----------|
| Genesis (DH) | 95470A00 | Lane Departure Warning System (LDWS) Adjustment | 95895-B1000 | 0.4 M/H |

Circulate To: General Manager, Service Manager, Parts Manager, Warranty Manager, Service Advisors, Technicians, Body Shop Manager, Fleet Repair

Service Procedure:

NOTICE

Before proceeding with the service procedure, select and be prepared to drive on a calibration route with the following conditions:

- The road must allow maintaining speeds above 20 MPH.
- The lane markings must be clearly recognizable on both sides (faded lane paint may not be detected by the LKAS).
- There should not be any sharp bends in the road (curvature radius of less than 820 feet).
- There should not be sidewalks or other dividing structures along the edge of the lane.
- Although the vehicle may be driven on a straight road that turns into a curved road or comes to a complete stop, the progress made in calibration is maintained and the calibration process is resumed when the vehicle reenters a direct road.
- **If calibration is not completed within ten minutes**, the calibration process fails. Calibration process must be repeated from the first phase.

1. Connect the DLC cable of the VCI to the data link connector located under the left side of dash.

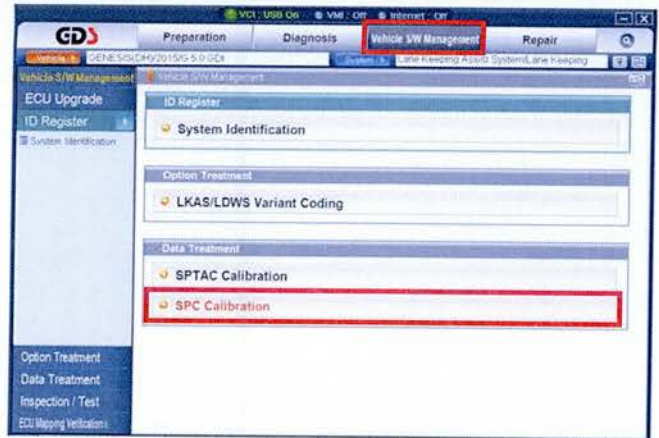


2. From the System Screen, select "LKAS" and click "OK".



SUBJECT: GENESIS (DH) LANE KEEPING ASSIST SYSTEM CALIBRATION

- Click the “Vehicle SW Management” tab. Select “SPC Calibration” under Data Treatment.



- Follow GDS prompts and perform all system checks before proceeding. When ready to begin driving click “OK”.

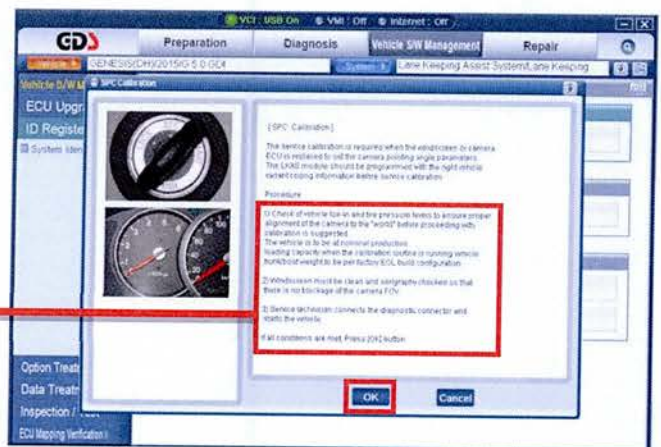
[SPC Calibration]

The service calibration is required when the windscreen or camera ECU is replaced to set the camera pointing angle parameters. The LKAS module should be programmed with the right vehicle variant coding information before service calibration.

Procedure

- 1) Check of vehicle toe-in and tire pressure levels to ensure proper alignment of the camera to the “world” before proceeding with calibration is suggested. The vehicle is to be at nominal production loading capacity when the calibration routine is running vehicle trunk/boot weight to be per factory EOL build configuration.
- 2) Windscreen must be clean and serigraphy checked so that there is no blockage of the camera FOV.
- 3) Service technician connects the diagnostic connector and starts the vehicle.

If all conditions are met, Press [OK] button.



- While driving on a suitable road for LKAS calibration, the GDS will show the calibration status.

NOTICE

The status may stop momentarily if the lanes are not detected by the LKAS.

NOTICE

Maintain a speed above 20 MPH during the calibration process.



6. After successfully calibrating the LKAS, the screen to the right will appear.



7. Validate LKAS is operating as designed.
8. Clear any stored DTC's using the GDS, then refer to TSB #12-BE-005-2 to clear any diagnostic codes stored in the Blue Link system.

NOTICE

Before starting the Blue Link code clearing procedure, confirm all of the Diagnostic Codes in HISTORY and ACTIVE status are cleared from the vehicle using GDS.