

SB-10056483-4915

 HYUNDAI NEW THINKING. NEW POSSIBILITIES. Technical Service Bulletin	GROUP CAMPAIGN	NUMBER 14-01-029
	DATE JULY, 2014	MODEL(S) GENESIS COUPE (BK)
SUBJECT: ECM UPDATE – 14MY GENESIS COUPE 3.8L DTC P0019/P0024 (SERVICE CAMPAIGN TT7)		

ECU Update

* IMPORTANT

*** Dealer Stock and Retail Vehicles ***

Dealers must perform this Campaign on all affected vehicles prior to customer retail delivery and whenever an affected vehicle is in the shop for any maintenance or repair.

When a vehicle arrives at the Service Department, access Hyundai Motor America's "Warranty Vehicle Information" screen via WEBDCS to identify open Campaigns.

Description:

This bulletin provides information related to the ECM software update of some early 14MY GENESIS COUPE(BK) (3.8L engine) vehicles built with Delphi Camshaft Sensor (Bank 2 / Exhaust) (P/N 39318-3C100) that may experience a malfunction indicator lamp with following DTC(s):

- P0019 : Crankshaft Position – Camshaft Position Correlation(Bank 2 Sensor B))
- P0024 : 'B' Camshaft Position - Timing Over-Advanced or System Performance (Bank 2)

Applicable Vehicle:	2014MY Genesis Coupe (BK) with 3.8L engine (Built with Delphi Camshaft Sensor (Bank 2 / Exhaust) P/N 39318-3C100)
----------------------------	--

GDS Information:

Event #	Description
325	Campaign TT7 Only(BK F/L 3.8 GDI P0019/P0024 DTC LOGIC IMPROVEMENT)

Warranty Information:

Op. Code	Operation	Op. Time
40C038R0	ECM UPGRADE	0.3

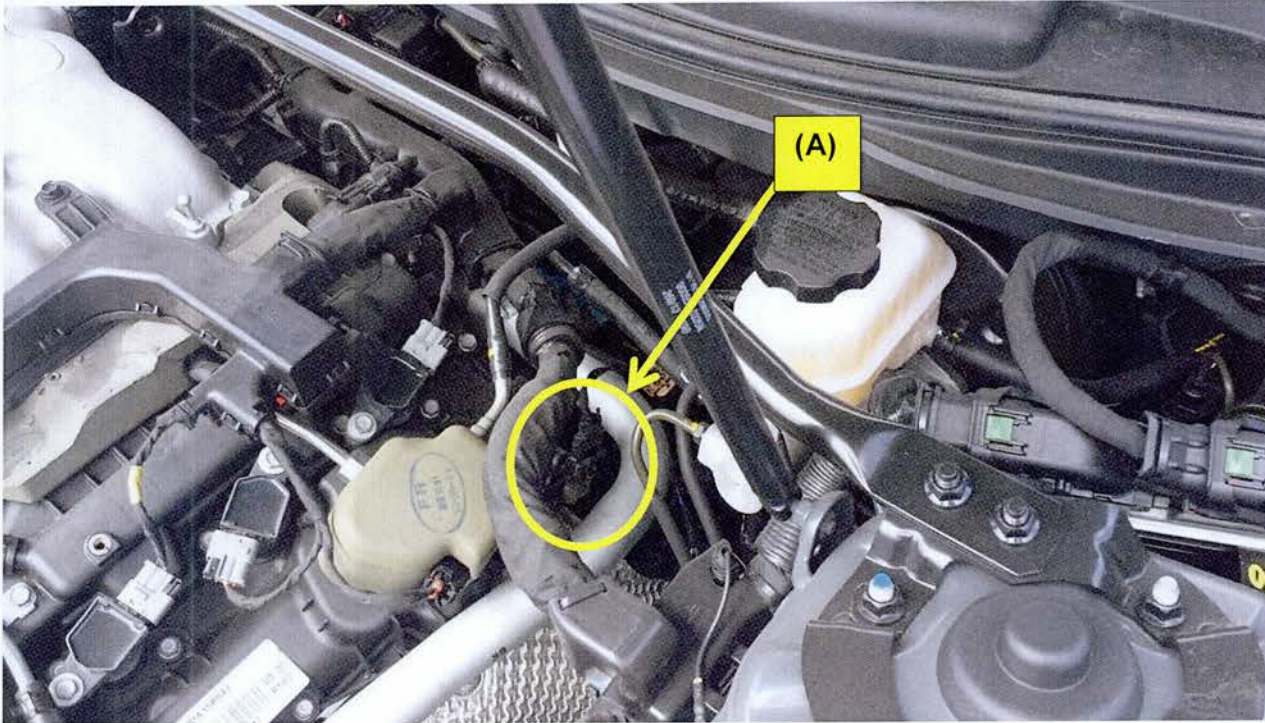
NOTE: Submit claim using the Campaign Claim Entry Screen.

Inspection Procedure - Delphi Camshaft Sensor (Bank 2 / Exhaust) P/N 39318-3C100:

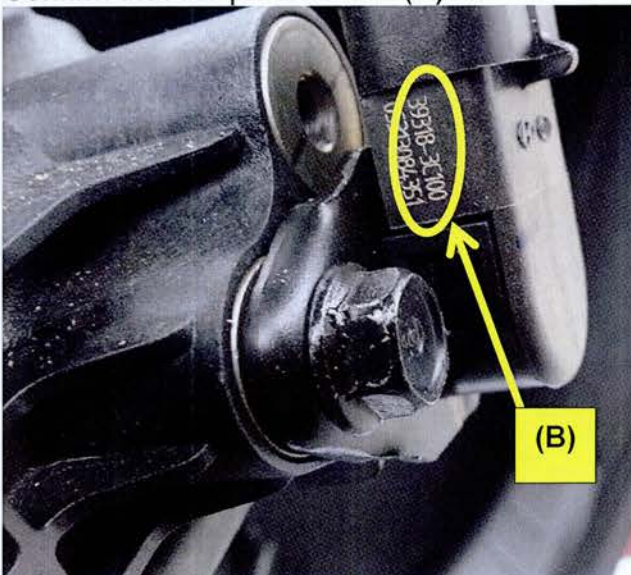
NOTICE

This TSB only applies to the Delphi Camshaft sensor 39318-3C100.
It does not apply to the Kefico sensor 39318-3C500. Performing this ECU Update to a vehicle with the Kefico sensor will introduce a DTC incident.

1. Inspect the Bank 2/Exhaust Camshaft sensor **(A)**:



Confirm that the part number **(B)** on the Camshaft sensor is 39318-3C100:



SUBJECT: ECM UPDATE – 14MY GENESIS COUPE 3.8L DTC P0019/P0024

ROM ID Information Table:

ECM P/N	T/M	IMMO	ROM ID	
			Previous	New
39115-3CKN5	8AT	YES (SSB)	BKDN38GM2**CL5A*	BKDN38GM2**CL5AB
39116-3CKN5	6MT		BKDN38GM2M6CL5A*	BKDN38GM2M6CL5AB
39106-3CKN5	6MT	NO (Key Start)	BKDN38GS2M6CL5A*	BKDN38GS2M6CL5AB

NOTE: Verify the ECM ROM ID before updating the vehicle’s software.

General Precautions:

- Connect the USB cable between the GDS and the VCI.
- Connect the 16-pin DLC connector from the VCI into the DLC located under the driver’s side dash.



NOTICE

Make sure the battery icon at the bottom right of the GDS laptop shows at least 50%; if not, charge the GDS or attach a battery charger.

- Turn off all lights (Do not leave the headlight switch in auto mode) and all accessories (including heater/air conditioner/fan, audio, heated seats, rear defroster, etc.) to ensure the battery will not be discharged during the update.
- Perform the update with the ignition key in the ON position.
- Do not disconnect any cables connected to the vehicle or the GDS during the update.
- Do not start the engine or turn the ignition switch OFF during the update.

NOTICE

Confirm your GDS has the most recent version. If not, connect the GDS to an Internet port, open the GDS home page and select “Update”. Refer to instructions on hmaservice.com if necessary.

If you encounter GDS related problems, call the GIT Helpline at 888-437-0308.

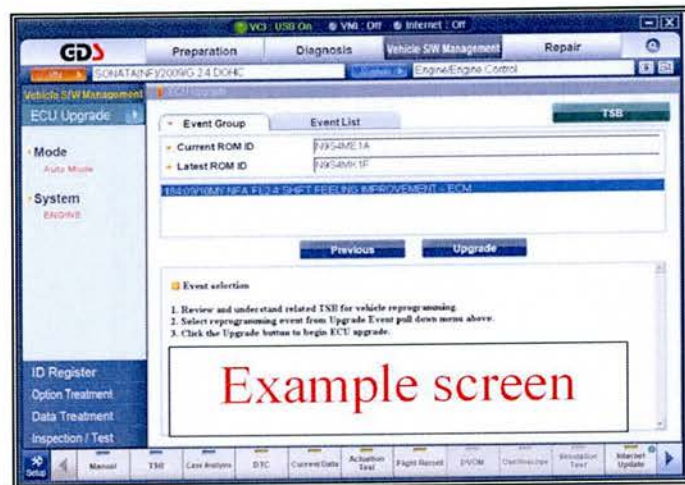
Service Procedure:

GDS Auto Mode ECM Update Procedure

1. From the GDS home page, select **ECU Upgrade**. If necessary, select the VIN.
2. Select **Engine** as the system and then select **OK**.
3. Select **Auto Mode** and then select **Next**.
4. From the **System** tab, select **Engine** and then select **OK**. The GDS will read the ROM ID. Confirm the ROM is applicable as shown on Page 1, “ROM ID Information”.



5. Select update event as listed on the **GDS Event list of page-1**. Select **Upgrade**.



6. If the screen indicates "**Voltage is OK**" (voltage > 12volts), select **OK**. If not, select **CANCEL** and charge the vehicle battery by running the engine for 10 minutes.
7. Updating will occur until 100% is reached on the bar graph. At the prompt, turn the ignition key off for 10 seconds then turn it on and select **OK**.
8. The GDS will confirm that ECM reprogramming is successfully finished. Select **OK**.
9. If the ECM update was not successful, go to **GDS Manual Mode ECM update Procedure**.
10. Check for DTC in all systems and Erase All DTC that stored due to loss of CAN communication during the ECM Update.
11. Turn **Off ignition 10 seconds** then turn **On** before going to engine start.
12. Start the engine to confirm proper operation.
13. Clear DTC in the BlueLink system per instructions of TSB 12-BE-005-2.

GDS Manual Mode ECM Update Procedure

NOTICE

In event of Auto Mode ECU Update failure:

- You must attempt **Manual Mode**. Use the ECM P/N from the vehicle's ECM label if it is not clear from the ROM ID Table as to the correct ECM P/N to use for your vehicle.
- Replacing an ECM without carefully documenting that a **Manual Mode** update attempt was made, will result in claims charge back.

NOTICE

- GDS Manual Mode is intended for recovery of an ECM Update should it begin but then later fail in process in the Auto Mode.
- The ECM connectors must be disconnected for 15 minutes to reset its contents then perform this Manual Mode Update.
- Do not force Manual Mode if you get an error in Auto Mode that the vehicle's current ROM ID did not apply.
- It is critical to identify the correct ECM Part Number in the PASSWORD table or the ECM may be permanently damaged. It is recommended to remove ECM and read the part number from the label to confirm.

1. From the GDS home page, select **ECU Upgrade**. If necessary, select the VIN.
2. Select **Engine** as the system and then select **OK**.
3. Select **Manual Mode** and then select Next.
4. From the **System** tab, select **Engine** and then select **OK**.
5. Select update event as per the **GDS Event List of page-3**, then select **Upgrade**.
6. Be certain to enter the exact appropriate password from the table below and select **OK**. **See the important NOTICE above.**
7. The remaining steps are same as Steps 6~13 of the **Auto Procedure**.

MENU	PASSWORD
BK F/L IMMO 8AT 39115-3CKN5	1535
BK F/L IMMO 6MT 39116-3CKN5	1635
BK F/L NON IMMO 6MT 39106-3CKN5	0635