



A PACCAR COMPANY

## SB-10056404-8360

### Technical Information Bulletin

#### E101

IMPORTANT ENGINE INFORMATION	Engine No.
Fuel Rate at Adv. HP	274.8 mm <sup>3</sup> /stroke
Max. Rated Speed	1700 RPM
Max. Adv. kW/hp	340/455 kW/hp
Family	EPCR12.9M01
	Date of Mfg.
<small>This engine conforms to U.S. EPA and CARB (to 2014 Model Year New Heavy-Duty Engines.) engine has a primary intended service application as a heavy-duty engine. The engine is certified to operate on ultra-low sulfur diesel fuel only. Exhaust Emission System: DDI, TC, CAC, ECM, EGR-C, OC, SCF</small>	

#### Section

Miscellaneous

#### Subject

Replacement of Expiring Emissions Labels

#### Release Date

9/22/2014

#### Condition

Chassis have a test exemption EPA/CARB label that must be replaced with a certified EPA/CARB label because the exemption expires on December 31, 2014.

#### Chassis Affected

12 T680 and T880s built between 12/02/2013 – 12/12/2013 equipped with PACCAR MX-13 EPA2013 MY2014 engines. See attached chassis list.

#### Action

##### CAMPAIGN

Review the attached chassis list for your dealer code and schedule your customer(s) for service if their chassis is on the list. Use the attached procedure. Review the DWWC or SIR for "Complete" next to the "E101" campaign code prior to performing this repair.

NOTE: While this campaign may be performed at a time convenient for the customer, it must be completed before December 31, 2014 in order to keep the engine in EPA/CARB compliance. Customers failing to replace the test exemption label could face fines up to \$3,750 per day, per vehicle.

---

## **Warranty**

There is no time or mileage limit to this campaign. Kenworth will pay for parts at dealer net plus applicable mark-up and labor:

- 0.3 hours labor to remove and replace the emissions label. (Use Quick Claim Code 053-XXX 0.30 hrs.).
- File an additional claim for extraordinary circumstance. A quick claim for standard labor must be filed first.

### **CLAIM CODING**

Failure Location: 053-005-001	Work Accomplished: 35
Failure Type: 340	Responsibility Code: 01
SRT Code: 053-XXX	Claim Type: C

---

## **Parts**

Parts are available from PACCAR Parts. See the attached ordering procedure.

---

## **Procedure**

Verification:

To qualify for the new label each engine must have at least software version RC1. To verify this, enter the chassis number in SIR and check to see if any of the following ESBs have already been performed:

E067, E069, E071, E072, or E082.

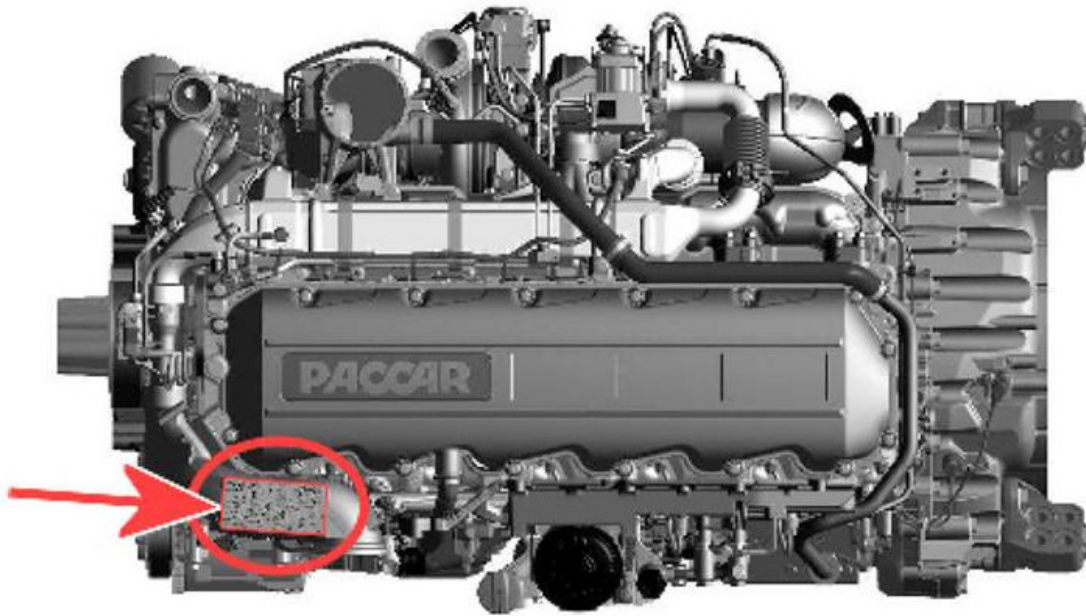
Ordering:

See attached ordering procedure.

Installation:

1) Remove the Test Exemption EPA/CARB label from the engine's valve cover or intake pipe. This label **MUST** be removed before installing the replacement label.

2) The EPA/CARB label must be placed on the intake pipe as shown below. (Prior to 2013 this label was installed on the engine valve cover. Since 2013, it has been located on the intake pipe).



---

## Attachments

 [Chassis List](#)

 [Customer Letter](#)

 [Procedure](#)

---

Authored by: GH

---

Access to PACCAR's Enterprise Portal is provided as a benefit of doing business with PACCAR. All applications and content accessed through this system are confidential and proprietary and the property of PACCAR Inc and its suppliers, and must be kept strictly confidential pursuant to the contract licensing such access. Disclosure, publication, release or distribution of any material found on PACCAR systems to any person other than employees with a need to know such information is strictly prohibited. All activity on this system is monitored. If PACCAR suspects or discovers any unauthorized activity, access may be immediately terminated without prior notification. Violators may be subject to legal action.

© Copyright 2014 PACCAR Inc. All rights reserved. We welcome your [feedback](#) on this page. For technical questions or concerns about this page, please contact the [DealerNet Webmaster](#).