

SB-10056145-5390**FORD:**

2013-2014 Escape

This article supersedes TSB 13-5-23 to remove the production fix date, update the vehicle model years, Service Procedure and Part List.

ISSUE

Some 2013-2014 Escape vehicles may exhibit a concern of slow front door glass operation, front door glass stops midway when going up, or front door glass bounces back when going up, typically worse in cold ambient conditions.

ACTION

Follow the Service Procedure steps to correct the condition.

SERVICE PROCEDURE

1. Remove the front window glass on the affected door(s). Refer to Workshop Manual (WSM), Section 501-11.
2. Determine the build date of the vehicle.
 - a. If the vehicle was built on or before 2/4/2013 proceed to Step 3.
 - b. If the vehicle was built on or after 2/5/2013 perform only Step 6.
3. Locate the part number on the window regulator. Is the suffix AG or higher. (Figure 1)

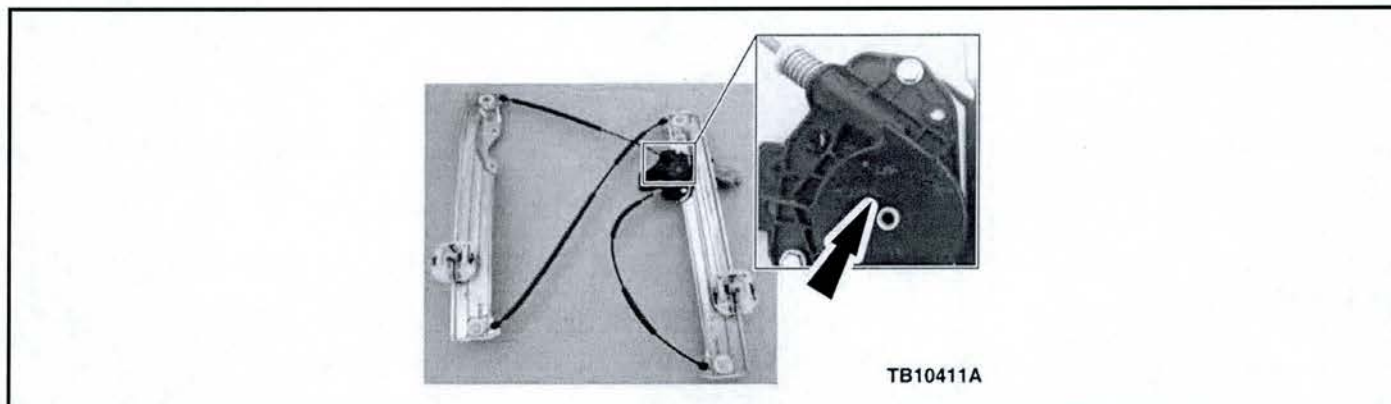


Figure 1 - Article 14-0111

- a. Yes - proceed to Step 4.
 - b. No - replace the window regulator. Refer to WSM, Section 501-11.
4. Remove and discard the foam patch at the bottom of the front window glass run at the A-pillar.
5. Replace the interior front door lower beltline moulding.
6. Replace the door glass run seal. (Figure 2)

NOTE: The information contained in Technical Service Bulletins is intended for use by trained, professional technicians with the knowledge, tools, and equipment to do the job properly and safely. It informs these technicians of conditions that may occur on some vehicles, or provides information that could assist in proper vehicle service. The procedures should not be performed by "do-it-yourselfers". Do not assume that a condition described affects your car or truck. Contact a Ford, Lincoln, or Mercury dealership to determine whether the bulletin applies to your vehicle. Warranty Policy and Extended Service Plan documentation determine Warranty and/or Extended Service Plan coverage unless stated otherwise in the TSB article. The information in this Technical Service Bulletin (TSB) was current at the time of printing. Ford Motor Company reserves the right to supersede this information with updates. The most recent information is available through Ford Motor Company's on-line technical resources.

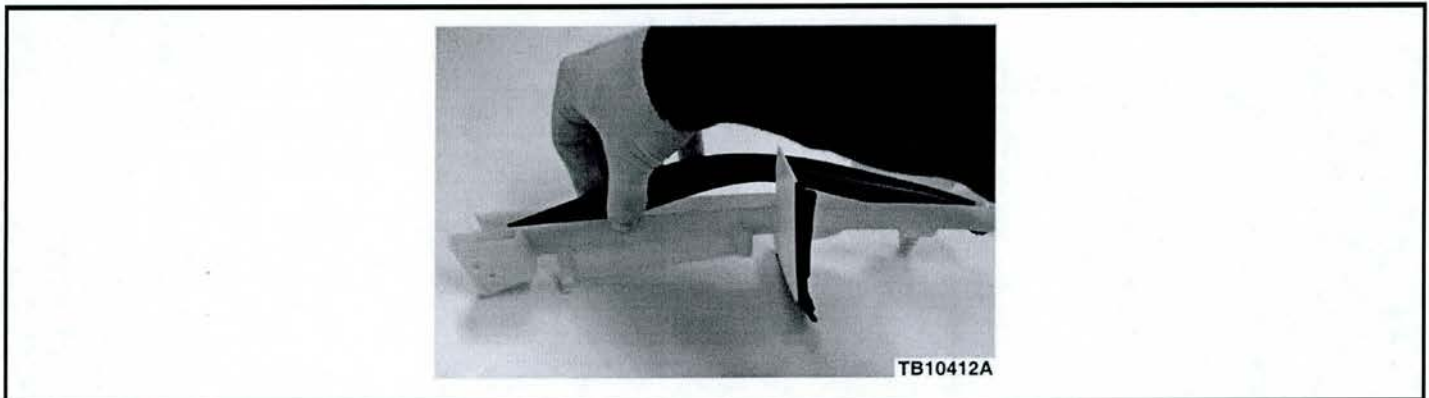


Figure 2 - Article 14-0111

- a. Remove the existing door glass run and bracket seal.
- b. Make sure the top and bottom of the new glass run seal is properly positioned in the plastic moulding tabs. (Figure 3)

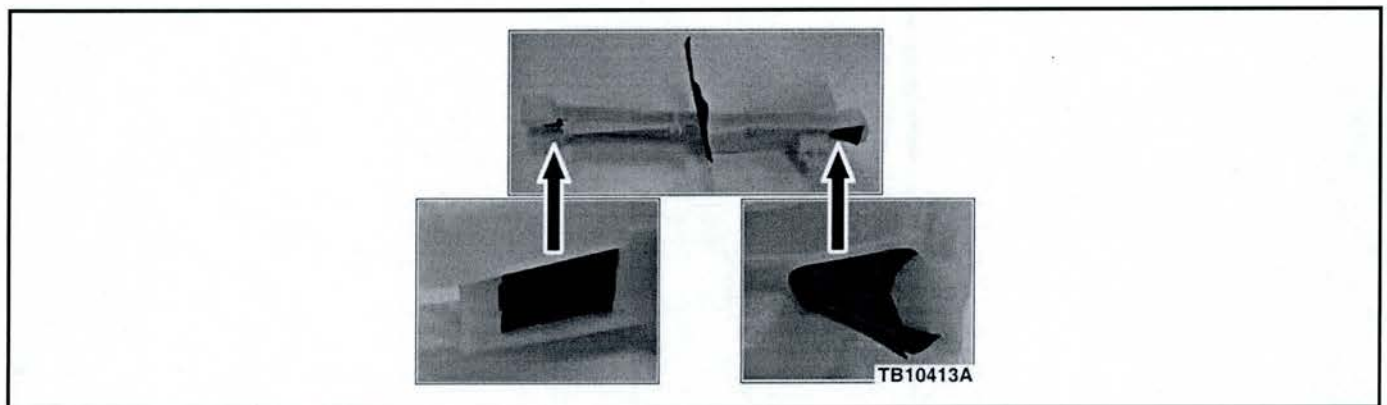


Figure 3 - Article 14-0111

7. Install the door glass run and bracket.
8. Install the front window glass. Refer to WSM, Section 501-11A.

PART NUMBER	PART NAME
CJ5Z-7821456-B	Door Belt Weatherstrip — Right Side
CJ5Z-7821457-B	Door Belt Weatherstrip — Left Side
CJ5Z-99222A00-A	Door Glass Run Seal
CJ5Z-7823201-A	Regulator Assy — Left Side with One Touch Down
CJ5Z-7823200-A	Regulator Assy — Right Side with One Touch Down
CJ5Z-7823201-B	Regulator Assy — Left Side with One Touch Up/Down
CJ5Z-7823200-B	Regulator Assy — Right Side with One Touch Up/Down

OPERATION	DESCRIPTION	TIME
140111A	2013-2014 Escape: Replace The Door Glass Run Seal One (1) Front Door (Do Not Use With Any Other Labor Operations)	0.7 Hr.
140111B	2013-2014 Escape: Replace The Door Glass Run Seal Both (2) Front Doors (Do Not Use With Any Other Labor Operations)	1.4 Hrs.

TSB 14-0111 (Continued)

OPERATION	DESCRIPTION	TIME
140111C	2013-2014 Escape: Inspect, Replace The Window Regulator, Door Glass Run Seal And Interior Beltline Moulding And Discard Foam Patch If Necessary One (1) Front Door (Do Not Use With Any Other Labor Operations)	0.9 Hr.
140111D	2013-2014 Escape: Inspect, Replace The Window Regulator, Door Glass Run Seal And Interior Beltline Moulding And Discard Foam Patch If Necessary (2) Front Doors (Do Not Use With Any Other Labor Operations)	1.6 Hrs.
140111E	2013-2014 Escape: Inspect And Replace The Window Regulator One (1) Front Door Replace The Door Glass Run Seal And Interior Beltline Moulding And Discard Foam Patch If Necessary Both (2) Front Doors (Do Not Use With Any Other Labor Operations)	0.9 Hr.

WARRANTY STATUS:

Eligible Under Provisions Of New Vehicle Limited Warranty Coverage

Warranty/ESP coverage limits/policies/prior approvals are not altered by a TSB. Warranty/ESP coverage limits are determined by the identified causal part and verified using the OASIS part coverage tool.

DEALER CODING

BASIC PART NO.	CONDITION CODE
7823200	42