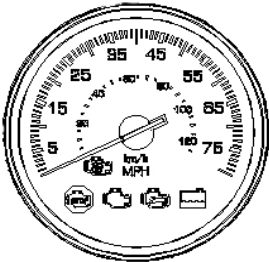




SB-10056024-7986

Technical Information Bulletin

E087



Section

ECM/PCMI

Subject

Trucks Programmed with Incorrect Max Governed CC Speed

Release Date

6/30/2014

Condition

MX-13 engines programmed with an incorrect max governed speed. These chassis are incorrectly limited to the maximum default speed of 63 MPH.

Chassis Affected

152 Kenworth chassis built at the Chillicothe plant between 1/13/2014 - 1/24/2014 with PACCAR MX-13 MY2014 engines. See attached Chassis List.

Action

INFORMATION ONLY

Dealers should be aware that this problem exists and will be corrected by downloading the software update included in ESB [E090](#).

Warranty

The warranty information for this bulletin can be found in [E090](#).

Background

This problem was caused because a software macro was not run during programming and assembly of the vehicle. This macro would have installed the customer's specified speed limit. Because the software was not installed, the trucks left the plant with their default 63 MPH speed limit.

Procedure

See ESB [E090](#) for procedures.

Attachments

 [Chassis List](#)

 [Customer Letter](#)

Authored by: GH

Access to PACCAR's Enterprise Portal is provided as a benefit of doing business with PACCAR. All applications and content accessed through this system are confidential and proprietary and the property of PACCAR Inc and its suppliers, and must be kept strictly confidential pursuant to the contract licensing such access. Disclosure, publication, release or distribution of any material found on PACCAR systems to any person other than employees with a need to know such information is strictly prohibited. All activity on this system is monitored. If PACCAR suspects or discovers any unauthorized activity, access may be immediately terminated without prior notification. Violators may be subject to legal action.

© Copyright 2014 PACCAR Inc. All rights reserved. We welcome your [feedback](#) on this page. For technical questions or concerns about this page, please contact the [DealerNet Webmaster](#).