



# Technical Bulletin

Model(s)	Year(s)	Eng. Code(s)	Trans. Code(s)	VIN Range From	VIN Range To
Jetta, Jetta Wagon (A5)	2009	2.0L TDI (CBEA)	All	All	All
Jetta Sedan (A5), Golf, Golf Wagon, Jetta SportWagen (A6)	2010	2.0L TDI (CJAA)	All	All	All
Jetta Sedan, Golf, Golf Wagon, Jetta SportWagen (A6)	2011-2014	2.0L TDI (CJAA)	All	All	All

## Condition

**21 14 03** April 24, 2014 **2026771** Supersedes T. B. V211108 dated November 16, 2011 to include additional model year applicability.

### Engine Lacks Performance, Engine Warning Light ON, DTCs P2563, P2564, P0299 or P20D8 Stored in ECM Fault Memory

Engine does not have any power and the engine warning light may be ON. One of the following DTC entries is stored in the engine control module.

DTC	Description
09570, P2562	Turbocharger Boost Control Position Sensor "A" Circuit
09571, P2563	Position Sensor for Boost Pressure Controller has an Implausible Signal
09572, P2564	Signal is too Low of the Position Sensor for Boost Pressure Controller
09573, P2565	Turbocharger Boost Control Position Sensor "A" Circuit High
09574, P2566	Turbocharger Boost Control Position Sensor Circuit Intermittent



# Technical Bulletin

---

00665, P0299	Boost Pressure Control, Values are Below Control Limit
08408, P20D8	Exhaust Monitoring, Following Injection Regulation Limit Exceeded
00175, P00AF	Turbocharger/Supercharger Boost Control "A" Module Performance

## Technical Background

1. Vacuum hose kinked, twisted or leaks.
2. Stud with clamp nut on turbo charger broken/missing, or rotated turbocharger housing. As a result the turbine adjustment travel is outside the tolerance.
3. Vacuum diaphragm on turbo charger leaks.
4. Plastic boost pipe from intake side of turbo to intercooler cracked/leaking.
5. Boost hose connection to intercooler leaking.
6. Check ECM Software level.

## Production Solution

Optimized assembly process to avoid twisted vacuum line.

Increase compressor housing washer thickness.

Change of material for min. flow adjustment screw.

Improved vacuum diaphragm with charge pressure actuator position sensor -G581-.

# Technical Bulletin

---

## Service

### Step 1

- Check the vacuum system for any leaks according to the workshop manual, repair group 21 exhaust/turbo charging, G-charger (section 'Checking Vacuum System').

#### Tip:

When checking, observe the following points in particular (Figures 1, 2, and 3):

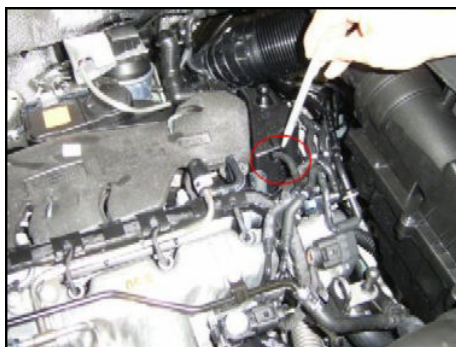


Figure 1

Hose not inserted into the vacuum container.



Figure 2

Vacuum hose at the solenoid valve, or in the pipe system, is kinked.

- Re-position hoses to avoid pinching. It is not necessary to replace the hoses.

# Technical Bulletin

---

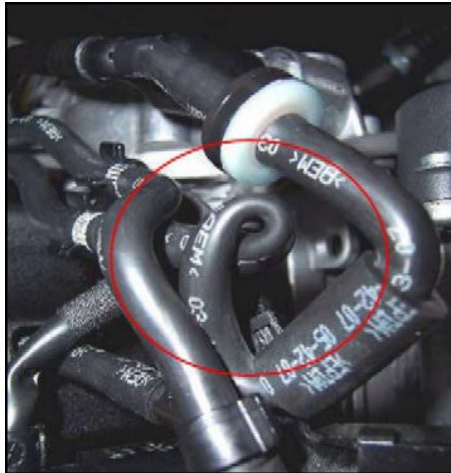


Figure 3

Vacuum hose at the solenoid valve, or in the pipe system, is twisted.

- Re-position hoses to avoid pinching. It is not necessary to replace the hoses.

## Step 2

### Turbocharger inspection may require the use of a inspection mirror

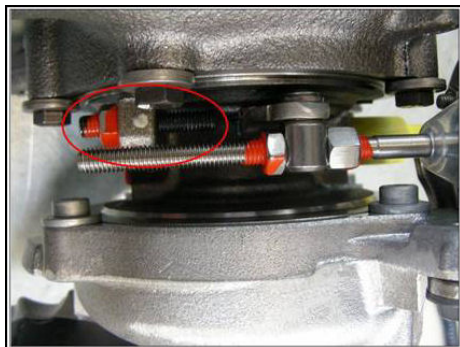


Figure 4

- Inspect the turbocharger stud with clamp nut (min. flow adjustment screw) ( Figure 4).

# Technical Bulletin

---

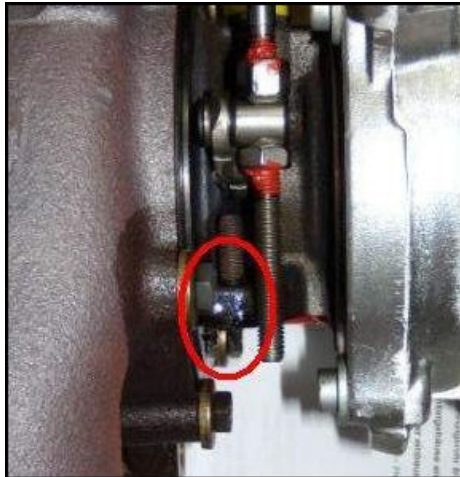


Figure 5

- Inspect the turbo charger to see whether the stud with clamp nut is broken (Figure 5).

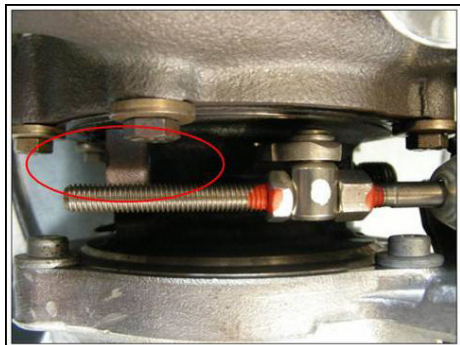


Figure 6

- Inspect the turbo charger to see whether the stud with clamp nut is missing (Figure 6).
- If the stud or clamp nut are missing, replace turbocharger.

# Technical Bulletin

---



Figure 7

- Carefully inspect the turbocharger housing around the entire housing assembly for an alignment mark (Figure 7). If the alignment mark is misaligned, this indicates that the housing has rotated.
- If misaligned, replace turbocharger.

 **Tip:**

Not all turbocharger houses have alignment marks present.

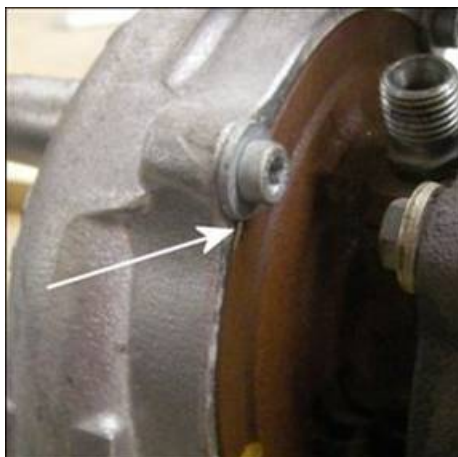


Figure 8

- Carefully inspect the turbocharger housing around the retaining bolts for witness marks (Figure 8), indicating that the housing has rotated.
- If witness marks are present from washers, replace turbocharger.

### **Step 3**

- Disconnect the vacuum hose on the turbo charger vacuum diaphragm.
- Connect a hand vacuum pump to the vacuum diaphragm and create a vacuum of about 600 mbar.
- Observe whether the adjusted vacuum is retained.

### **If the vacuum drops or cannot be achieved:**

- Install vacuum diaphragm with charge pressure actuator position sensor -G581- part number **03L198716A** according to the repair manual, Group 21 turbo charger, G charger > Removal and installation > Vacuum Diaphragm with Charge Pressure Actuator Position Sensor G581.



# Technical Bulletin

---

## If vacuum holds:

- And all other vacuum system diagnosis is OK, but fault codes **P2563**, and/or **P2564** are stored in ECM fault memory, replace the vacuum diaphragm with charge pressure actuator position sensor -G581- part number **03L198716A** according to the repair manual, Group 21 turbo charger, G charger > Removal and installation > Vacuum Diaphragm with Charge Pressure Actuator Position Sensor G581.

## If vacuum holds:

And all other vacuum system diagnosis is OK, but fault codes **P0299**, is stored in ECM fault memory, continue with diagnosis.

### **Tip:**

For the installation of the vacuum diaphragm with charge pressure actuator position sensor -G581- use the special tools T10422A socket and T10461 spanner.

### **Note:**

**DO NOT** replace the complete turbo charger if the vacuum diaphragm with Charge Pressure Actuator Position Sensor -G581- has failed.

## Step 4

- Inspect the plastic boost pipe that runs from the intake side of the turbocharger to the intercooler for cracks or leaks (Figures 9 and 10).

### **Tip:**

These cracks can be difficult to see. It may be necessary to pressure test the charge air system according to the repair manual under Engine > Engine Mechanical, Fuel Injection and Glow Plug > 21 turbo charger, G charger =>Diagnosis and Testing => Charge Air System, Checking for Leaks.



Figure 9



Figure 10

# Technical Bulletin

---

## Step 5

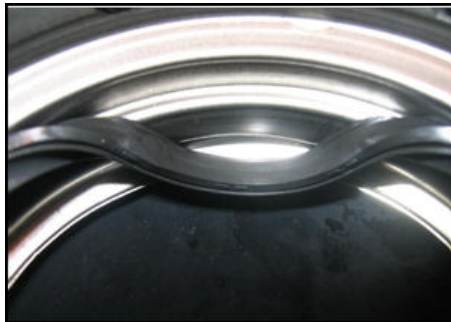


Figure 11

- Inspect the boost pressure hose connections to the intercooler for leaks.
- Ensure that the seals are in the proper position and not damaged (Figure 11). Damaged or missing seals should be replaced. The seals are available separately, it is not necessary to replace the entire hose.

 **Tip:**

**Pay close attention to this area if DTC P20D8 is recorded in ECM faults.**

## Step 6

- Ensure that any other Bulletins or Updates for ECM software have been performed. The software programming should be charged to the appropriate bulletin.





# Technical Bulletin

## Warranty

To determine if this procedure is covered under Warranty, always refer to the Warranty Policies and Procedures Manual <sup>1)</sup>					
Model(s)	Year(s)	Eng. Code(s)	Trans. Code(s)	VIN Range From	VIN Range To
Jetta, Jetta Wagon (A5)	2009	2.0L TDI (CBEA)	All	All	All
Jetta Sedan (A5), Golf, Golf Wagon, Jetta SportWagen (A6)	2010	2.0L TDI (CJAA)	All	All	All
Jetta Sedan, Golf, Golf Wagon, Jetta SportWagen (A6)	2011-2014	2.0L TDI (CJAA)	All	All	All
<b>SAGA Coding</b>					
<b>Claim Type:</b>			<b>Use applicable Claim Type <sup>1)</sup></b>		
<b>Service Number:</b>	<b>Damage Code</b>	<b>HST</b>	<b>Damage Location (Depends on Service No.)</b>		
2165	0010	--	Use applicable when indicated in ElsaWeb (L/R)		
<b>Parts Manufacturer</b>	<b>Golf</b>		<b>WVO <sup>2)</sup></b>		
	<b>Jetta, Jetta Sportwagen</b>		<b>3ME <sup>2)</sup></b>		
	<b>Passat</b>		<b>TX6 <sup>2)</sup></b>		
<b>Labor Operation <sup>3)</sup> :</b>					
Remove and Install Engine Cover			10831900 = 20 TU		



# Technical Bulletin

Labor Operation <sup>3)</sup> : Inspect vacuum system (incl. route vacuum hoses correctly)		21650199 = 20 TU
Causal Part:		Select labor operation 21650199
<b>Diagnostic Time <sup>4)</sup></b>		
GFF Time expenditure	01500000 = 10 TU max.	YES
Road Test	01210004 = 10 TU	YES
Technical Diagnosis	01320000 = 00 TU max.	NO
Claim Comment: Input "As per Technical Bulletin 2026771" in comment section of Warranty Claim.		
<sup>1)</sup> Vehicle may be outside any Warranty in which case this Technical Bulletin is informational only <sup>2)</sup> Code per warranty vendor code policy. <sup>3)</sup> Labor Time Units (TUs) are subject to change with ELSA updates. <sup>4)</sup> Documentation required per Warranty Policy Procedures Manual.		

To determine if this procedure is covered under Warranty, always refer to the Warranty Policies and Procedures Manual <sup>1)</sup>					
Model(s)	Year(s)	Eng. Code(s)	Trans. Code(s)	VIN Range From	VIN Range To
Jetta, Jetta Wagon (A5)	2009	2.0L TDI (CBEA)	All	All	All
Jetta Sedan (A5), Golf, Golf Wagon, Jetta SportWagen (A6)	2010	2.0L TDI (CJAA)	All	All	All
Jetta Sedan, Golf, Golf Wagon, Jetta SportWagen (A6)	2011-2014	2.0L TDI (CJAA)	All	All	All
<b>SAGA Coding</b>					



# Technical Bulletin

<b>Claim Type:</b>		<b>Use applicable Claim Type <sup>1)</sup></b>	
<b>Service Number:</b>	<b>Damage Code</b>	<b>HST</b>	<b>Damage Location (Depends on Service No.)</b>
2130	0010	--	Use applicable when indicated in ElsaWeb (L/R)
<b>Parts Manufacturer</b>		<b>Jetta, Jetta Sportwagen, Golf</b>	<b>KKK <sup>2)</sup></b>
<b>Labor Operation <sup>3)</sup> :</b> Remove and Install Engine Cover		10831900 = 20 TU	
<b>Labor Operation <sup>3)</sup> :</b> Inspect turbocharger MIN flow adjustment stud and position of compressor housing		21300199 = 20 TU	
<b>Labor Operation <sup>3)</sup> :</b> Remove and Install Turbocharger (ONLY if stud or nut are missing or if compressor housing has rotated)		21301981 = 290 TU	
<b>Labor Operation <sup>3)</sup> :</b> Remove and Install Diesel Particulate Filter		26741931 = 330 TU	
<b>Causal Part:</b>		03L253056	
<b>Diagnostic Time <sup>4)</sup></b>			
<b>GFF Time expenditure</b>	01500000 = 10 TU max.	YES	
<b>Road Test</b>	01210002 + 01210004 = 10 TU each	YES	
<b>Technical Diagnosis</b>	01320000 = 00 TU max.	NO	
<b>Claim Comment: Input "As per Technical Bulletin 2026771" in comment section of Warranty Claim.</b>			
<sup>1)</sup> Vehicle may be outside any Warranty in which case this Technical Bulletin is informational only <sup>2)</sup> Code per warranty vendor code policy. <sup>3)</sup> Labor Time Units (TUs) are subject to change with ELSA updates.			



# Technical Bulletin

<sup>4)</sup> Documentation required per Warranty Policy Procedures Manual.

To determine if this procedure is covered under Warranty, always refer to the Warranty Policies and Procedures Manual <sup>1)</sup>

Model(s)	Year(s)	Eng. Code(s)	Trans. Code(s)	VIN Range From	VIN Range To
Jetta, Jetta Wagon (A5)	2009	2.0L TDI (CBEA)	All	All	All
Jetta Sedan (A5), Golf, Golf Wagon, Jetta SportWagen (A6)	2010	2.0L TDI (CJAA)	All	All	All
Jetta Sedan, Golf, Golf Wagon, Jetta SportWagen (A6)	2011-2014	2.0L TDI (CJAA)	All	All	All
<b>SAGA Coding</b>					
<b>Claim Type:</b>			<b>Use applicable Claim Type <sup>1)</sup></b>		
<b>Service Number:</b>	<b>Damage Code</b>	<b>HST</b>		<b>Damage Location (Depends on Service No.)</b>	
2130	0010	--		Use applicable when indicated in ElsaWeb (L/R)	
<b>Parts Manufacturer</b>		<b>Jetta, Jetta Sportwagen, Golf</b>		<b>KKK <sup>2)</sup></b>	
<b>Labor Operation <sup>3)</sup> :</b> Remove and Install engine cover			10831900 = 20 TU		
<b>Labor Operation <sup>3)</sup> :</b> Vacuum check Vacuum Diaphragm			21290199 = 10 TU		



# Technical Bulletin

Labor Operation <sup>3)</sup> : Replace Vacuum Diaphragm with Charge Pressure Actuator Position Sensor -G581-.		21295533 = 130 TU
Causal Part:		03L198716A
<b>Diagnostic Time <sup>4)</sup></b>		
GFF Time expenditure	01500000 = 10 TU max.	YES
Road Test	01210004 = 10 TU	YES
Technical Diagnosis	01320000 = 00 TU max.	NO
Claim Comment: Input "As per Technical Bulletin 2026771" in comment section of Warranty Claim.		
<sup>1)</sup> Vehicle may be outside any Warranty in which case this Technical Bulletin is informational only <sup>2)</sup> Code per warranty vendor code policy. <sup>3)</sup> Labor Time Units (TUs) are subject to change with ELSA updates. <sup>4)</sup> Documentation required per Warranty Policy Procedures Manual.		

To determine if this procedure is covered under Warranty, always refer to the Warranty Policies and Procedures Manual <sup>1)</sup>					
Model(s)	Year(s)	Eng. Code(s)	Trans. Code(s)	VIN Range From	VIN Range To
Jetta, Jetta Wagon (A5)	2009	2.0L TDI (CBEA)	All	All	All
Jetta Sedan (A5), Golf, Golf Wagon, Jetta SportWagen (A6)	2010	2.0L TDI (CJAA)	All	All	All
Jetta Sedan, Golf, Golf Wagon, Jetta SportWagen (A6)	2011-2014	2.0L TDI (CJAA)	All	All	All



# Technical Bulletin

SAGA Coding			
Claim Type:		Use applicable Claim Type <sup>1)</sup>	
Service Number:	Damage Code	HST	Damage Location (Depends on Service No.)
2141	0010	--	Use applicable when indicated in ElsaWeb (L/R)
Parts Manufacturer	Jetta, Jetta Sportwagen, Golf		SB6 <sup>2)</sup>
Labor Operation <sup>3)</sup> : Remove and Install Engine Cover		10831900 = 20 TU	
Labor Operation <sup>3)</sup> : Check charge air system for cracks or seal leaks		21010133 = 70 TU (Jetta, Jetta SportWagen) 21010135 = 70 TU (Golf)	
Labor Operation <sup>3)</sup> : Remove and Install Noise Dampening Pan		10821900 = 30 TU	
Labor Operation <sup>3)</sup> : Remove and Install Pressure pipe		21411983 = 70 TU	
Causal Part:		1K0145840AB	
Diagnostic Time <sup>4)</sup>			
GFF Time expenditure	01500000 = 10 TU max.	YES	
Road Test	01210004 = 10 TU	YES	
Technical Diagnosis	01320000 = 00 TU max.	NO	
Claim Comment: Input "As per Technical Bulletin 2026771" in comment section of Warranty Claim.			
<sup>1)</sup> Vehicle may be outside any Warranty in which case this Technical Bulletin is informational only <sup>2)</sup> Code per warranty vendor code policy. <sup>3)</sup> Labor Time Units (TUs) are subject to change with ELSA updates. <sup>4)</sup> Documentation required per Warranty Policy Procedures Manual.			





# Technical Bulletin

To determine if this procedure is covered under Warranty, always refer to the Warranty Policies and Procedures Manual <sup>1)</sup>					
Model(s)	Year(s)	Eng. Code(s)	Trans. Code(s)	VIN Range From	VIN Range To
Jetta, Jetta Wagon (A5)	2009	2.0L TDI (CBEA)	All	All	All
Jetta Sedan (A5), Golf, Golf Wagon, Jetta SportWagen (A6)	2010	2.0L TDI (CJAA)	All	All	All
Jetta Sedan, Golf, Golf Wagon, Jetta SportWagen (A6)	2011-2014	2.0L TDI (CJAA)	All	All	All
<b>SAGA Coding</b>					
<b>Claim Type:</b>			<b>Use applicable Claim Type <sup>1)</sup></b>		
<b>Service Number:</b>	<b>Damage Code</b>	<b>HST</b>	<b>Damage Location (Depends on Service No.)</b>		
2141	0010	--	Use applicable when indicated in ElsaWeb (L/R)		
<b>Parts Manufacturer</b>	<b>Golf</b>		<b>WVO <sup>2)</sup></b>		
	<b>Jetta, Jetta Sportwagen</b>		<b>3ME <sup>2)</sup></b>		
<b>Labor Operation <sup>3)</sup> : Remove and Install Engine Cover</b>			10831900 = 20 TU		
<b>Labor Operation <sup>3)</sup> : Check charge air system for cracks or seal leaks</b>			21010133 = 70 TU (Jetta, Jetta SportWagen) 21010135 = 70 TU (Golf)		
<b>Labor Operation <sup>3)</sup> :</b>			10821900 = 30 TU		



# Technical Bulletin

<b>Remove and Install Noise Dampening Pan</b>		
<b>Labor Operation <sup>3)</sup> :</b> Remove and install pressure pipes (includes inspecting and or replacing seals)		<b>21411982 = 40 TU</b>
<b>Causal Part:</b>		<b>Seal, pipe, or Select labor operation 21411982</b>
<b>Diagnostic Time <sup>4)</sup></b>		
<b>GFF Time expenditure</b>	<b>01500000 = 10 TU max.</b>	<b>YES</b>
<b>Road Test</b>	<b>01210004 = 10 TU</b>	<b>YES</b>
<b>Technical Diagnosis</b>	<b>01320000 = 00 TU max.</b>	<b>NO</b>
<b>Claim Comment: Input "As per Technical Bulletin 2026771" in comment section of Warranty Claim.</b>		
<sup>1)</sup> Vehicle may be outside any Warranty in which case this Technical Bulletin is informational only <sup>2)</sup> Code per warranty vendor code policy. <sup>3)</sup> Labor Time Units (TUs) are subject to change with ELSA updates. <sup>4)</sup> Documentation required per Warranty Policy Procedures Manual.		

# Technical Bulletin

## Required Parts and Tools

**!** Note:

Not all parts will be required for each repair.

**ONLY USE NECESSARY PARTS.**

Part Description	Part No:	Quantity
Repair kit for vacuum diaphragm with charge pressure actuator position sensor -G581-	03L 198 716 A	1
Exhaust manifold with turbocharger	03L 253 056	1
Pressure Pipe	1K0 145 840AB	1
Seal ring	3C0 145 117H	1

Tool Description	Tool No:
Midtronics Battery Tester/Charger	InCharge 940 (INC-940)
VAS Diagnostic Tool	VAS 5051B, VAS 5052A, VAS 6150/X & VAS 6160/X with: ODIS Service 2.0.0 or higher with current online updates
Socket	T10422A
Spanner	T10461



# Technical Bulletin

---

## Additional Information

All part and service references provided in this Technical Bulletin are subject to change and/or removal. Always check with your Parts Dept. and Repair Manuals for the latest information.