

SB-10055852-9714

 Connection offline

Technical product information

Topic	Right hand headlamp water ingress
Market area	Worldwide Bentley (1WBE)
Brand	Bentley
Transaction No.	2035571/1
Level	EH
Status	Approval
Release date	

New customer code

Object of complaint	Complaint type	Position
Lighting system, signalling -> Exterior lights -> Headlight -> Headlight clear-glass lens	component / consumables -> fogged	right
Lighting system, signalling -> Exterior lights -> Headlight	leaks -> water ingress	

New workshop code

Object of complaint	Complaint type	Position
Lighting system, signalling -> Exterior lights -> Headlight	component / consumables -> fogged	right

Vehicle data

New GT V8T and GTC V8T

Sales types

Type	MY	Brand	Designation	Engine code	Gearbox code	Final drive code
3932*	2013	E		*	*	*
3932*	2014	E		*	*	*
3942*	2013	E		*	*	*
3942*	2014	E		*	*	*

Chassis numbers

Manufacturer	Filler	Type	Filler	MY	Factory	From	To	Prod from	Prod to
SCB	***	**	*	*	C	078510	090234		

Documents

Document name
master.xml
master.doc

 Connection offline

Technical product information

Transaction No.: 2035571/1

Right hand headlamp water ingress

Customer statement / workshop findings

Water evident in right hand headlamp

Technical background

The headlamp assembly features vents to allow air flow between the inner cavity of the lamp and the engine bay. As a result of differences in V8T engine bay dynamics the headlight ventilation pipes are at risk of water ingress due to a greater exposure from standing water distributed in the engine bay. This can result in water droplets being present inside the right hand headlamp (see Figure 1)

Production change

Revised vents fitted

Measure

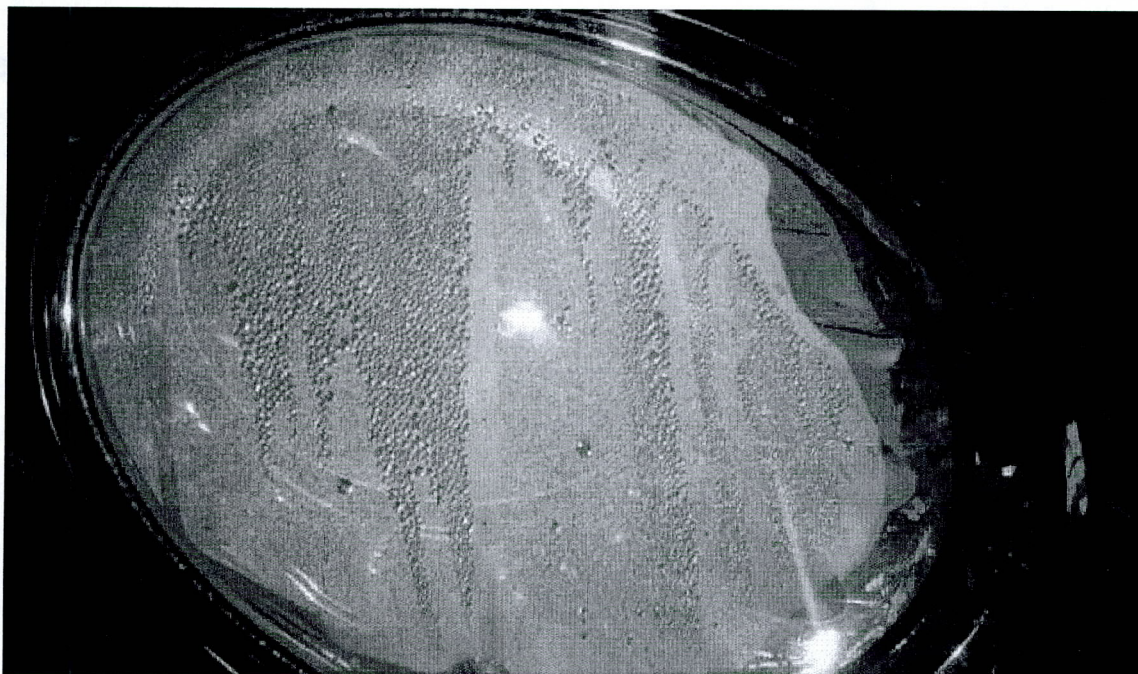


Figure 1

On occurrence of a validated complaint of water ingress in the right hand headlamp of Continental V8T then the later headlamp incorporating the revised vent pipes may be fitted.

Warranty accounting instructions

Warranty Type 910 or 110

Labour Operation Code 94 15 19 02

Damage Service Number 94 15

Damage Code 01 00
 Damage Location 002 (Right)
 Time 200 TU

Parts information

Part number	Description	Quantity
3W1941016BA	Right lamp LHD Europe AV1+8BP	1
3W1941016BB	Right lamp LHD North America AV1+8EH	1
3W2941016AA	Right lamp RHD ECE Europe AV0+8BP	1

Notes: Parts Description

8EH Bi-functional headlight with gas discharge lamp, for driving on the right (US design) — LED supplementary main beam, SAE, standard style

8BP Bi-functional headlight with gas discharge lamp — LED supplementary main beam, ECE, standard style

AV1 Driving on the right (LHD)

AV0 Driving on the left (RHD)