

 HYUNDAI NEW THINKING. NEW POSSIBILITIES. Technical Service Bulletin	GROUP	NUMBER
	CAMPAIGN	14-01-010
	DATE	MODEL
	FEBRUARY 2014	VELOSTER (FS)
2013 VELOSTER (FS) 1.6L ECM & TCM UPDATE (SERVICE CAMPAIGN TS6)		

  **ECU Update**

★ IMPORTANT

*** RETAIL VEHICLES ONLY ***

Dealers must perform this Campaign on all affected vehicles whenever an affected vehicle is in the shop for any maintenance or repair.

When a vehicle arrives at the Service Department, access Hyundai Motor America's "Warranty Vehicle Information" screen via WEBDCS to identify open Campaigns.

Description: This bulletin provides a procedure to update the ECM and TCM software on certain 2013 Veloster (FS) 1.6L vehicles with dual clutch transmissions.

ECM update:

P0456/P0461/P2192 DTC LOGIC UPDATE is included.

- P0456 : Evaporative Emission System – Leak detected(very small leak)
- P0461 : Fuel Level Sensor 'A' Circuit Range/Performance
- P2192 : System too Rich at Higher Load(Bank1)

Applicable Vehicles: 2013 MY Veloster (FS) 1.6L with Dual-Clutch Transmissions
 Applicable Production Date Range: **From May 15, 2012 through October 11, 2012**

GDS Information:

Event #	Description
Event #283 (or latest Event #)	283.FS DCT REACCELERATION LOGIC UPDATE - ECM
Event #284 (or latest Event #)	284.FS DCT REACCELERATION LOGIC UPDATE - TCM

NOTICE

If event #295.FS DCT P0456, P0461, P2192 has already been performed there is no need to perform the ECM update only performed the TCM update.

WARRANTY INFORMATION:

MODEL	OP CODE	OPERATION	OP TIME
Veloster (FS)	40C003R0	ECM & TCM UPGRADE	0.5
	40C003R1	TCM UPGRADE	0.3

NOTE: Submit claim on Campaign Claim Entry Screen

ECM ROM ID TABLE: Verify the ECM ROM ID before updating vehicle software.

MODEL	ECM PART NUMBER	IMMO	ECM ROM ID	
			PREVIOUS	NEW
VELOSTER (FS) 1.6L	39110-2BBB7	YES	GGFS-DFU6FS00H00 GGFS-DFU6FS01H00 GGFS-DFU6FS02H00	GGFS-DFU6FS03H00
	39110-2BBC7	NO	GGFS-DFU6ES00H00 GGFS-DFU6ES01H00 GGFS-DFU6ES02H00	GGFS-DFU6ES03H00

TCM ROM ID TABLE: Verify the TCM ROM ID before updating vehicle software.

MODEL	TCM PART NUMBER	TCM ROM ID	
		PREVIOUS	NEW
VELOSTER (FS)	95440-2A001	DFS0Z16NA9 DFS0Z16NAA	DFS0Z16NAC

GENERAL PRECAUTIONS

- Connect the USB cable between the GDS and the VCI.
- Connect the 16-pin DLC connector from the VCI into the DLC located under the driver's side dash.



NOTICE

Make sure the battery icon at the bottom right of the GDS laptop shows at least 50%; if not charge the GDS or attach a battery charger

- Turn off all lights (Do not leave the headlight switch in auto mode) and all accessories (including heater/air conditioner/fan, audio, heated seats, rear defroster, etc) to ensure the battery will not be discharged during the update.
- Perform the update with the ignition key in the ON position. (Turn the ignition key to the ON position or press the Start-Stop Button two times without depressing the brake pedal).
- Do not disconnect any cables connected to the vehicle or the GDS during the update.
- Do not start the engine or turn the ignition switch OFF during the update.

NOTICE

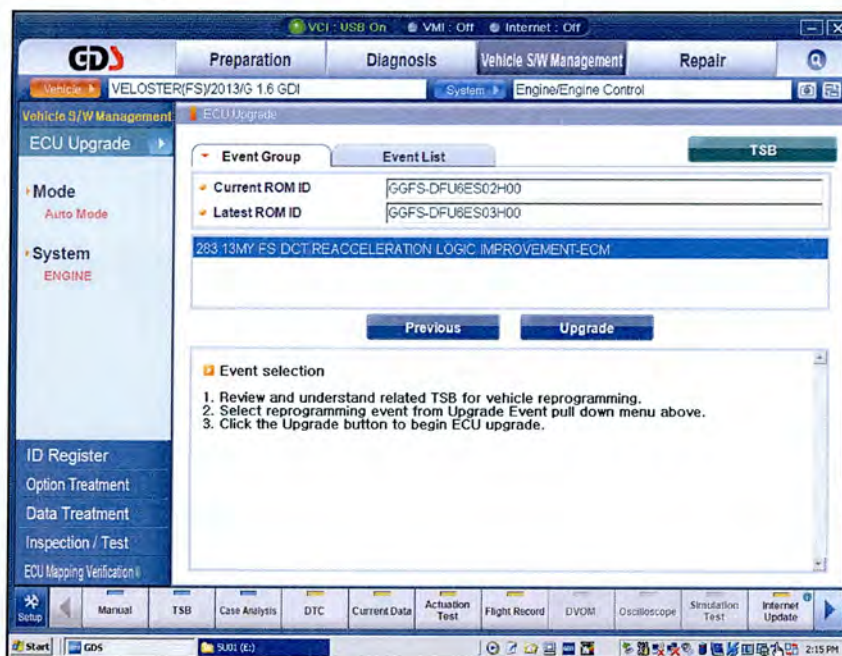
Confirm your GDS has the most recent version. If not, connect the GDS to and internet port, open GDS home page and select "Update".

If you encounter GDS related problems, call the GIT Helpline at 888-437-0308.

ECM UPDATE

GDS AUTO MODE ECM UPDATE PROCEDURE

1. From the GDS home page, select **ECU Upgrade**. If necessary, select the VIN.
2. Select **Engine** as the system and then select **OK**.
3. Select **Auto Mode** and then select **Next**.
4. From the **System** tab, select **Engine** and then select **OK**. The GDS will read the ROM ID. Confirm the ROM is applicable as shown on Page 1, "ECM ROM ID Information".
NOTE: Record the ROM ID in case the auto update fails and a manual update is needed.
5. Update event #283 (or latest event) 13MY FS DCT REACCELERATION LOGIC UPDATE – **ECM** will display. Select **Upgrade**.



6. If the screen indicates "**Voltage is OK**", select **OK**. If not, select **CANCEL** and charge the vehicle battery by running the engine for 10 minutes.
7. Updating will occur until 100% is reached on the bar graph. At the prompt, turn the ignition key OFF for 30 seconds, then turn it ON and select **OK**.
8. The GDS will confirm that ECM reprogramming is successfully finished. Select **OK**.
9. If the ECM update was not successful, go to **GDS MANUAL MODE ECM UPDATE PROCEDURE**.
10. Check for Diagnostic Trouble Codes and erase any DTC.
11. Clear any DTCs in the BlueLink system per instructions of TSB 12-BE-005-2.
12. Start the engine to confirm proper operation.

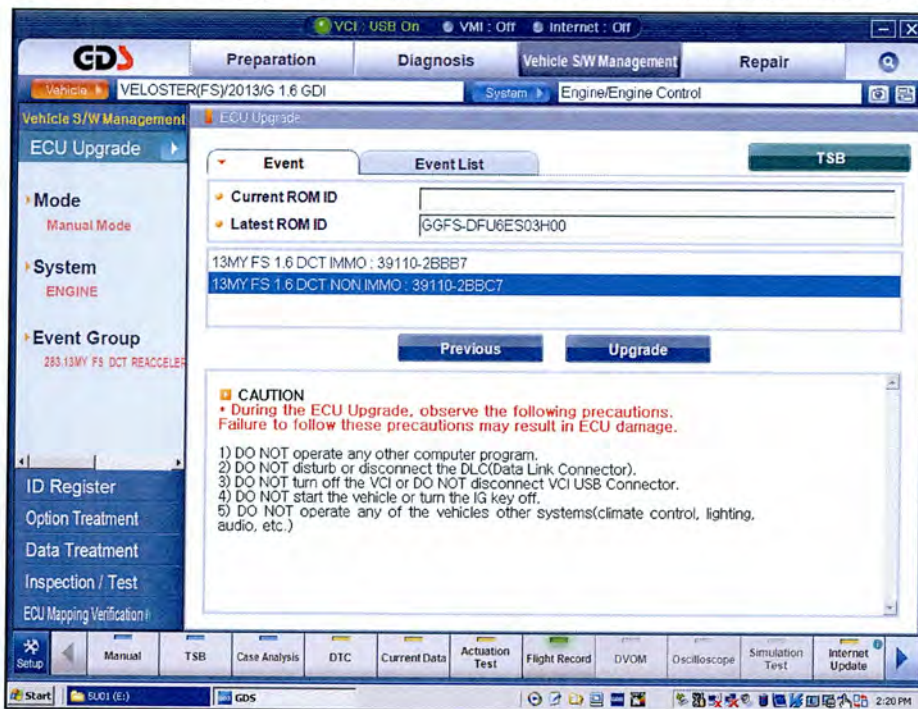
GDS MANUAL MODE ECM UPDATE PROCEDURE

NOTICE

In the event of AUTO MODE update failure (after it initiated the progress bar):

- You must attempt MANUAL MODE. Use the ECM P/N from the vehicle's ECM label if the correct ECM P/N is not clear from the ROM ID table.
- Replacing an ECM without carefully documenting that a MANUAL MODE update attempt was made will result in a charge back of your claim.

1. From the GDS home page, select **ECU Upgrade**. If necessary, select the VIN.
2. Select **Engine** as the system and then select **OK**.
3. Select **Manual Mode** and then select **NEXT**.
4. From the **System** tab, select **Engine** and then select **Next**.
5. Update event #283 (or latest event) 13MY FS DCT REACCELERATIONLOGIC UPDATE – ECM will display. Select **Next**.
6. Select the correct ROM according to ECM part number on the ECM label. Select **Upgrade**.



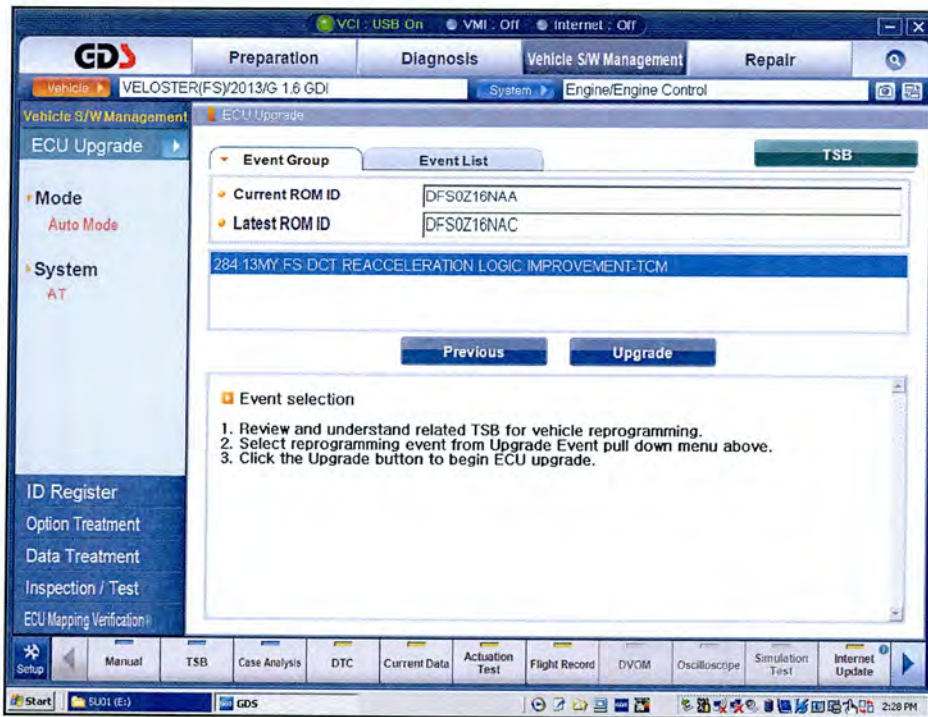
7. Enter the Password and click **OK**.

MENU	IGNITION	PASSWORD
13 MY FS 1.6 DCT IMMO: 39110-2BBB7	SSB	1027
13 MY FS 1.6 DCT NON-IMMO: 39110-2BBC7	KEY	1028

8. If the “Voltage is OK”, select **OK**. If not, select **CANCEL** and charge the vehicle battery.
9. The remaining steps are the same as Step 7~12 of the Auto Procedure.

GDS AUTO MODE TCM UPDATE PROCEDURE

1. From the GDS home page, select **ECU Upgrade**. If necessary, select the VIN.
2. Select **AT** as the system and then select **OK**.
3. Select **Auto Mode** and then select **Next**.
4. From the **System** tab, select **AT** and then select **OK**. The GDS will read the ROM ID. Confirm the ROM is applicable as shown on Page 1, "ROM ID Information".
5. Update event #**284 13MY FS DCT REACCELERATION LOGIC UPDATE - TCM** will display. Select **Upgrade**.



6. If the screen indicates "**Voltage is OK**", select **OK**. If not, select **CANCEL** and charge the vehicle battery by running the engine for 10 minutes.
7. Updating will occur until 100% is reached on the bar graph. At the prompt, turn the ignition key **OFF** for **30 seconds**, then turn it **ON** and select **OK**.

NOTICE

Turn the ignition key off for 30 seconds.

8. The GDS will confirm that TCM reprogramming is successfully finished. Select **OK**.
9. If the TCM update was not successful, go to **GDS MANUAL MODE TCM UPDATE PROCEDURE**.
10. Check for any Diagnostic Trouble Codes and erase any DTC.
11. Clear any DTCs in the BlueLink system per instructions of TSB 12-BE-005-2.
12. Drive the vehicle to confirm proper operation.

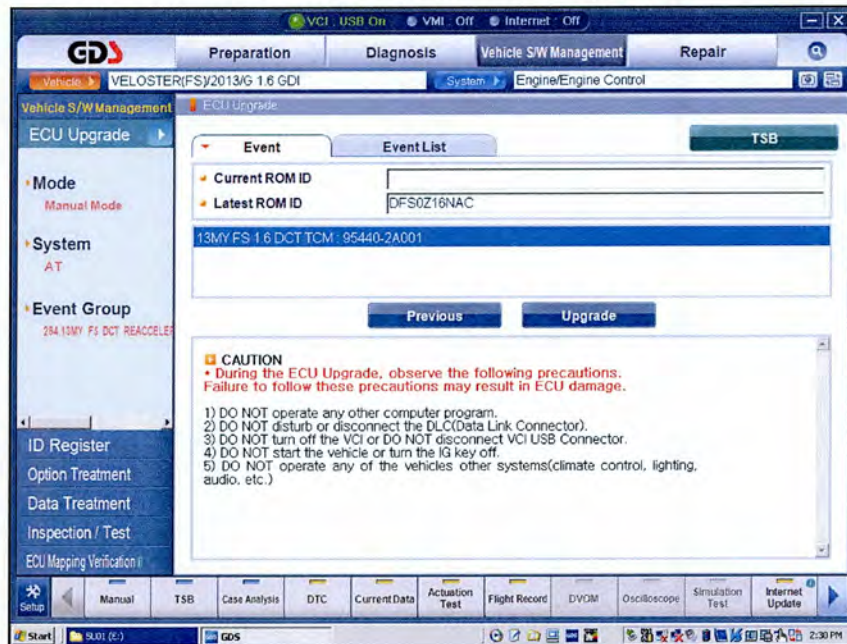
GDS MANUAL MODE TCM UPDATE PROCEDURE

NOTICE

In the event of AUTO MODE update failure (after it initiated the progress bar):

- You must attempt MANUAL MODE. Use the TCM P/N from the vehicle's TCM label if the correct TCM P/N is not clear from the ROM ID table.
- Replacing a TCM without carefully documenting that a MANUAL MODE update attempt was made will result in a charge back of your claim.

1. From the GDS home page, select **ECU Upgrade**. If necessary, select the VIN.
2. Select **AT** as the system and then select **OK**.
3. Select **Manual Mode** and then select **NEXT**.
4. From the **System** tab, select **AT** and then select **NEXT**.
5. Update event #284 13MY FS DCT REACCLERATION LOGIC UPDATE – TCM will display. Select **Next**.
6. 13 MY FS 1.6 DCT TCM 95440-2A001 will display. Select **Upgrade**.



6. Enter the Password and click **OK**. The part number can be found on the PCM label.

MENU	PASSWORD
FS 1.6 DCT TCM: 95440-2A001	2001

7. If the “**Voltage is OK**”, select **OK**. If not, select **CANCEL** and charge the vehicle battery.
8. The remaining steps are the same as Step 7~12 of the Auto Procedure.