

SERVICE PROCEDURE

Reprogram Electrically-driven Intelligent Brake Control Unit

1. Before continuing, it is **IMPORTANT** to make sure:

- **ASIST on the CONSULT PC has been freshly synchronized (updated).**
- **All CONSULT related software updates (if any) have been installed.**

NOTE: The CONSULT PC automatically gets all reprogramming software during ASIST synchronization.

CAUTION:

- Turn off all cell phones and external Bluetooth devices within range of C-III plus.
- Do not touch C-III plus during reprogramming.
- Do not disconnect the AC adaptor during reprogramming.
- Do not disconnect the “plus” VI’s diagnostic cables during reprogramming.
- Do not touch the power (“ignition”) switch during reprogramming.
- Do not touch any electrical switch during reprogramming.

2. Have the **GR8 Multitasking Battery Diagnostic Station** (battery tester/charger) available and ready to use.

- Do not connect the battery tester/charger at this time. The battery tester/charger will be set up later in this bulletin.

CAUTION: Do not charge the High Voltage (HV) Lithium Ion battery during reprogramming.

NOTE:

- Check to see if the timer for either charging or climate control is on. If on, turn them off and make sure to turn them back on after reprogramming.

3. Once all ASIST and CONSULT related updates have been verified/performed, attach the CONSULT PC to vehicle.
 - Connect the plus VI to the vehicle.
 - Connect the AC adapter to the CONSULT PC.
4. Turn on the CONSULT PC, and then open C-III plus.
5. Press the vehicle's power ("ignition") switch twice without depressing the brake pedal.
 - The meter and gauges will illuminate.

CAUTION: Do Not set the vehicle in "READY to drive" mode.

NOTE: Make sure all accessories are turned off.

6. After the plus VI is recognized, select **Re/programming, Configuration**.

NOTE: Make sure all applications other than C-III plus are closed.

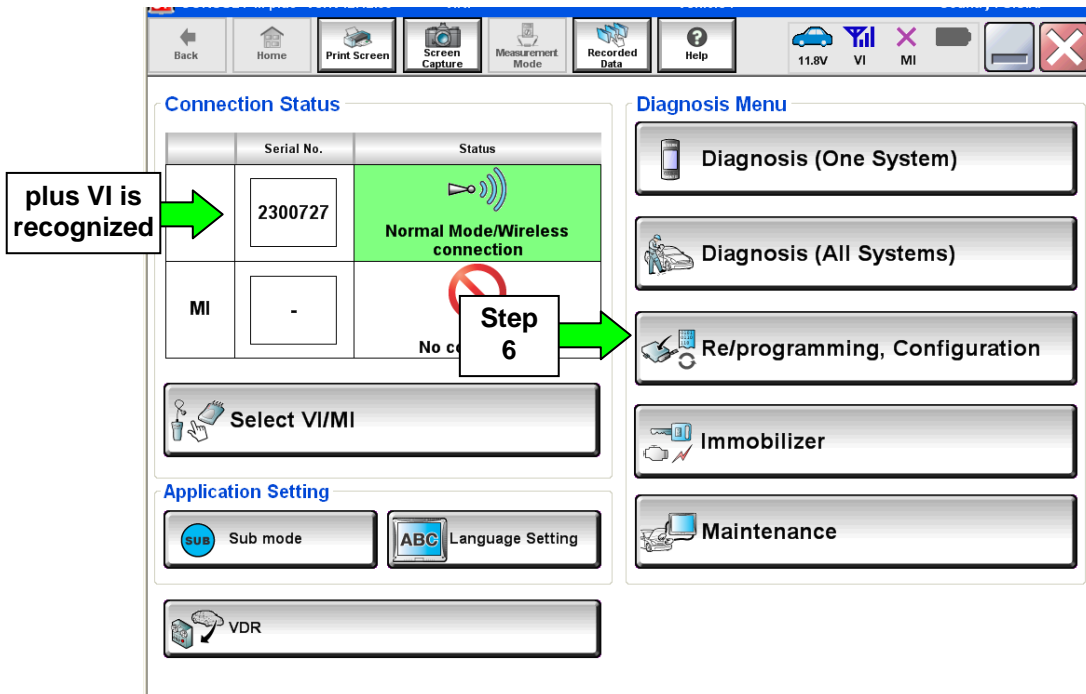


Figure 1

7. Select **Next**.

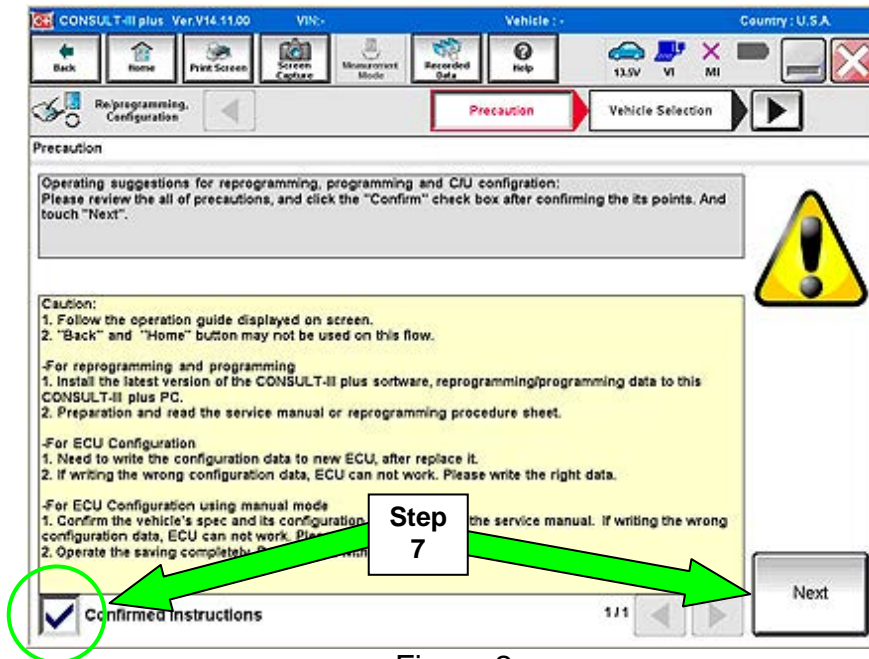


Figure 2

8. Select **LEAF** and **2013** or **Automatic Selection (VIN)**.

- If **Automatic Selection (VIN)** is selected, wait for the **Reading VIN** screen to complete (picture not shown).

9. Select **Select**.

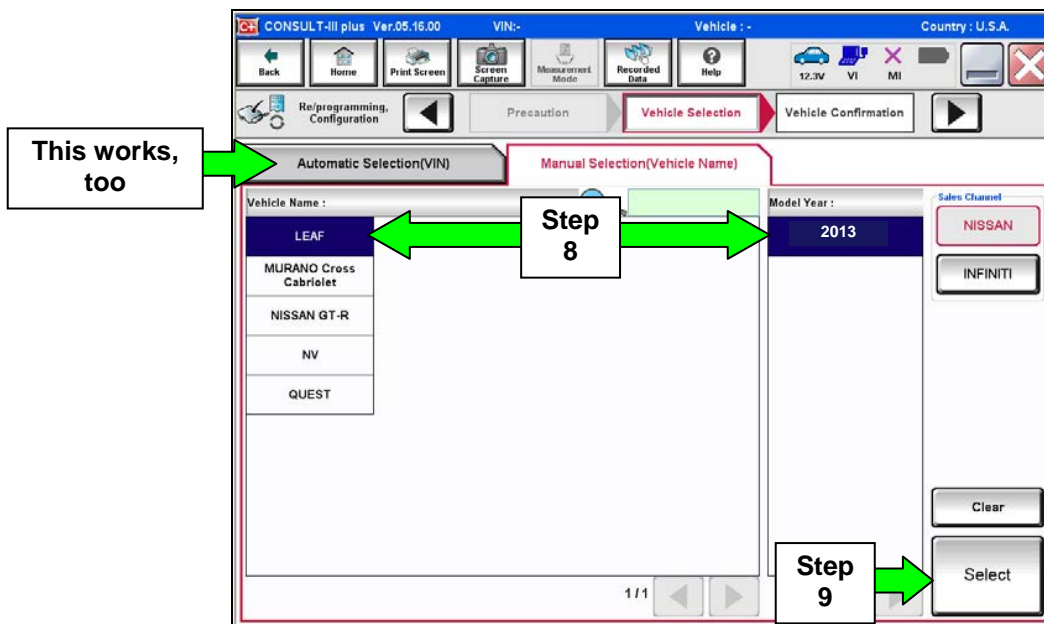


Figure 3

10. Verify the VIN in **VIN or Chassis #** matches that of the vehicle's.

- If the correct VIN exists, select **Confirm**.

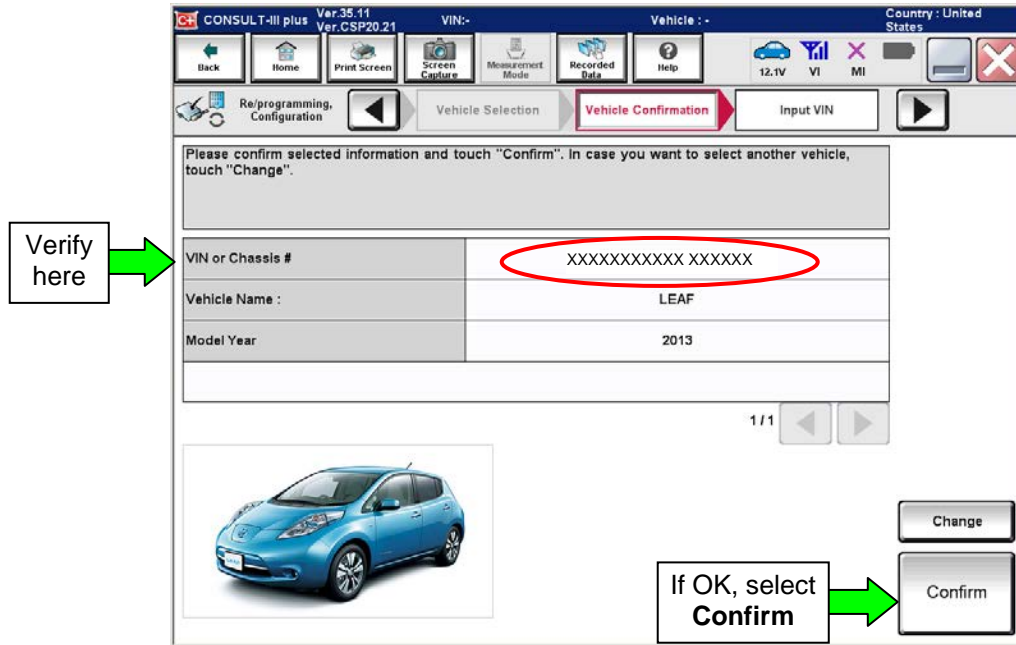


Figure 4

11. On the next screen, select **Confirm**.

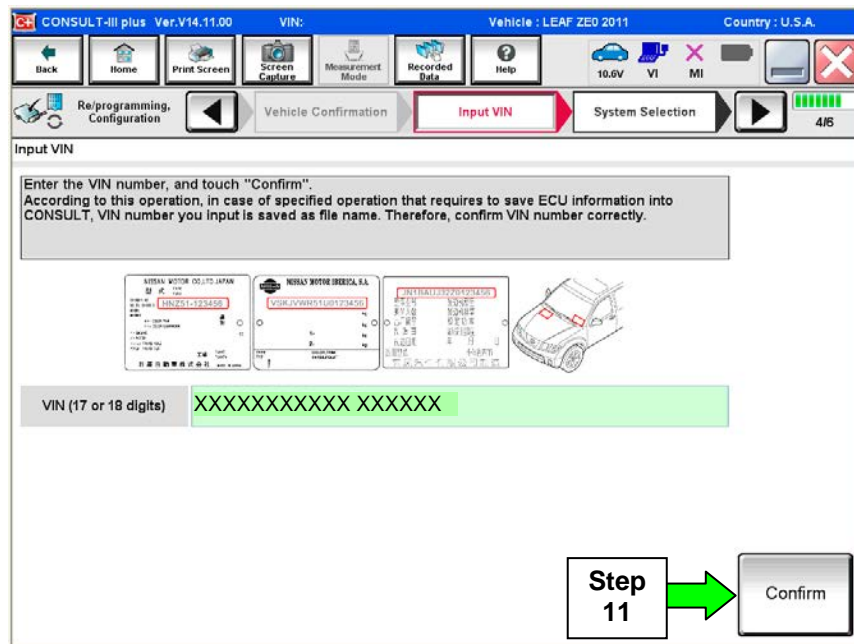


Figure 5

12. Select BRAKE.

- Wait for system call to complete.

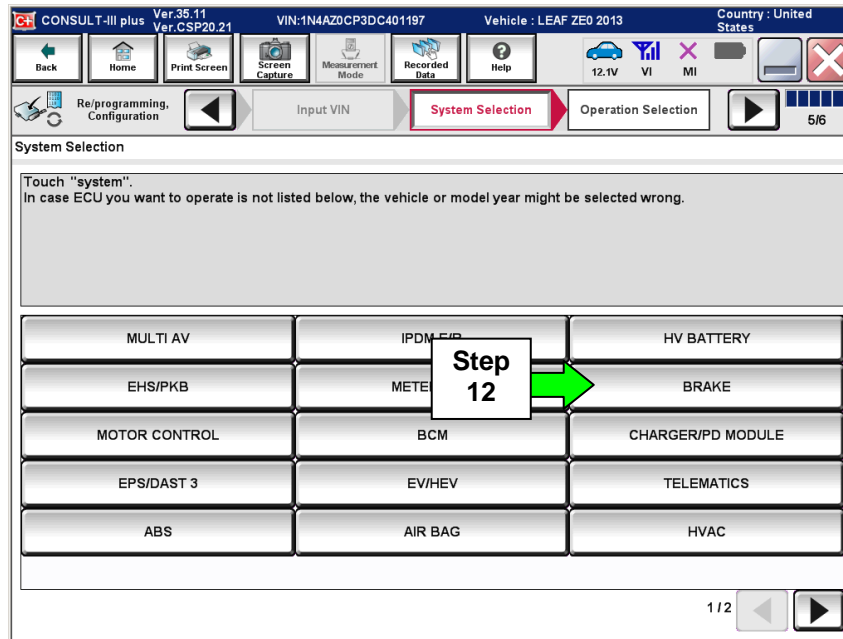


Figure 6

13. Select Reprogramming.

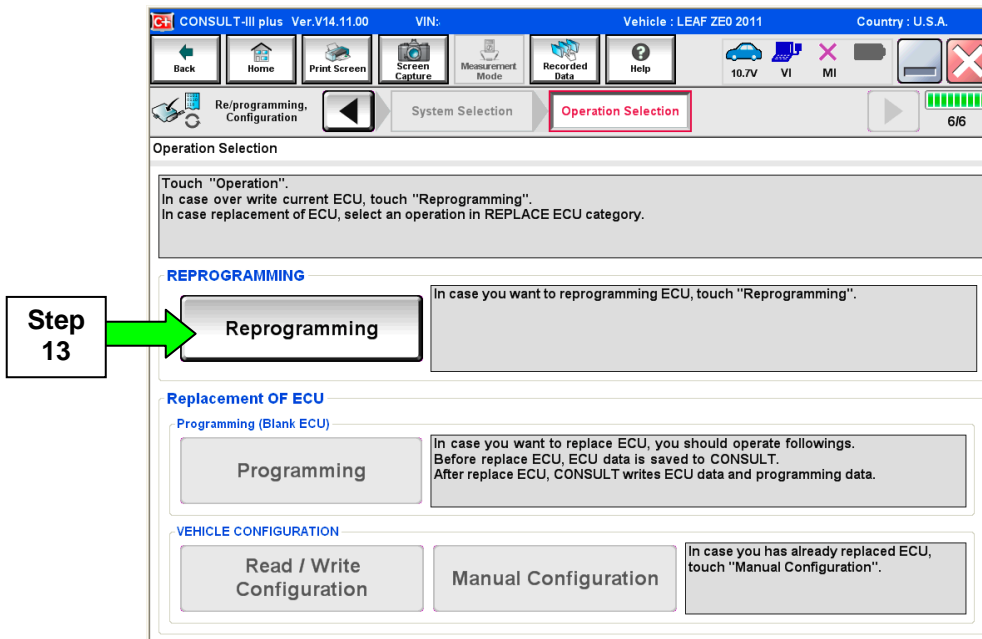


Figure 7

14. Write down the **Part Number** on the vehicle's repair order (see Figure 8).

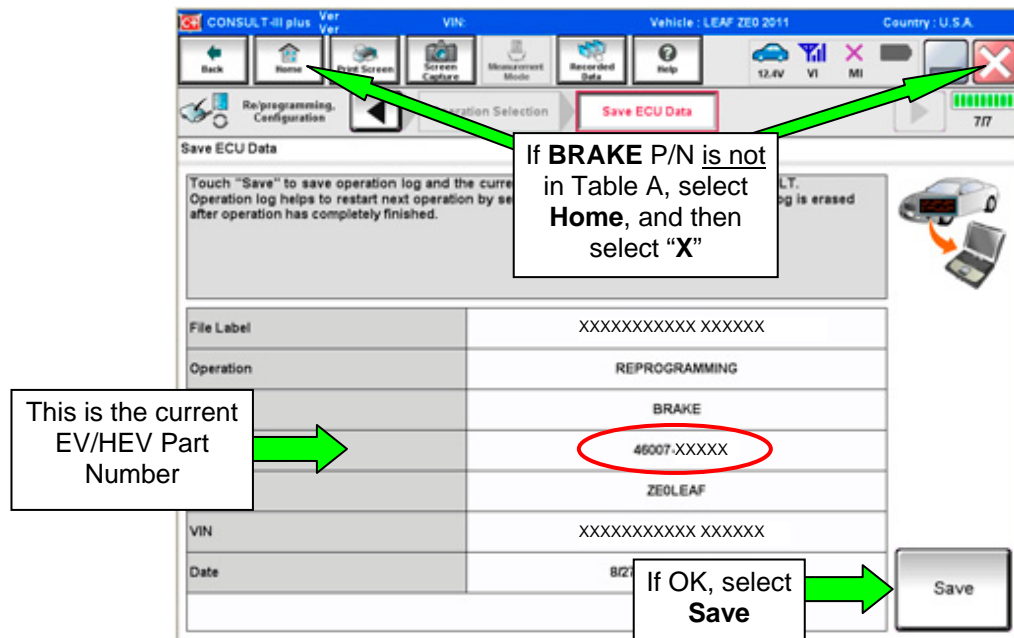


Figure 8

- If the **BRAKE** part number is in “Table A” below, continue with reprogramming.
 - Select **Save**, and then go to Step 15.
- If the **BRAKE** part number is not in “Table A” below, reprogramming is not needed.
 - Close C-III plus (select **Home**, and then the “**X**”), disconnect from the vehicle.
 - If the timer for either charging or climate control were turned off, turn them back on.

Table A

Model	Current BRAKE Part Number: 46007 -
2013 LEAF	3NF0A, 3NF1A

15. Select **Next**.

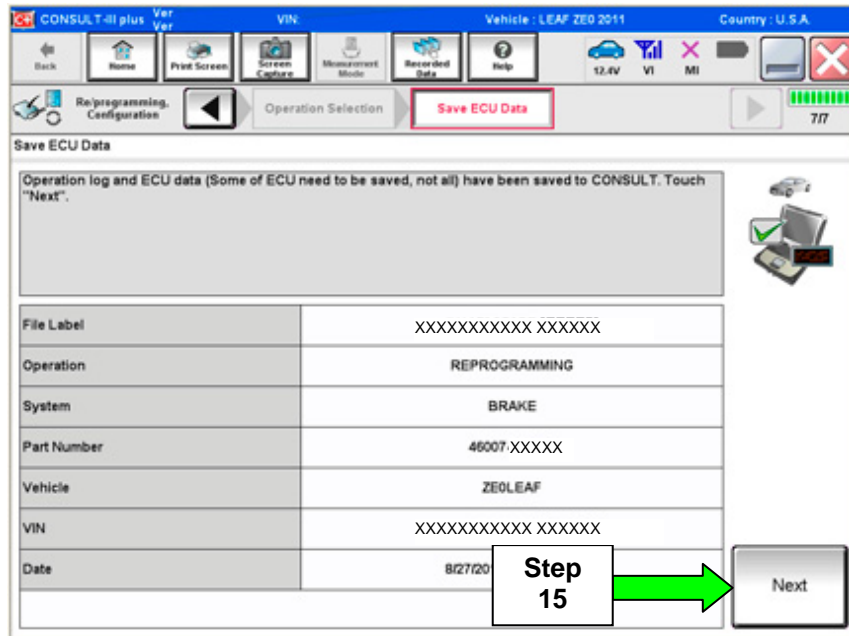


Figure 9

16. Read the precautions on page 1, and then select page 2 (page 2 not shown) with arrow. After reading page 2, select **Confirmed instructions**, and then select **Next**.

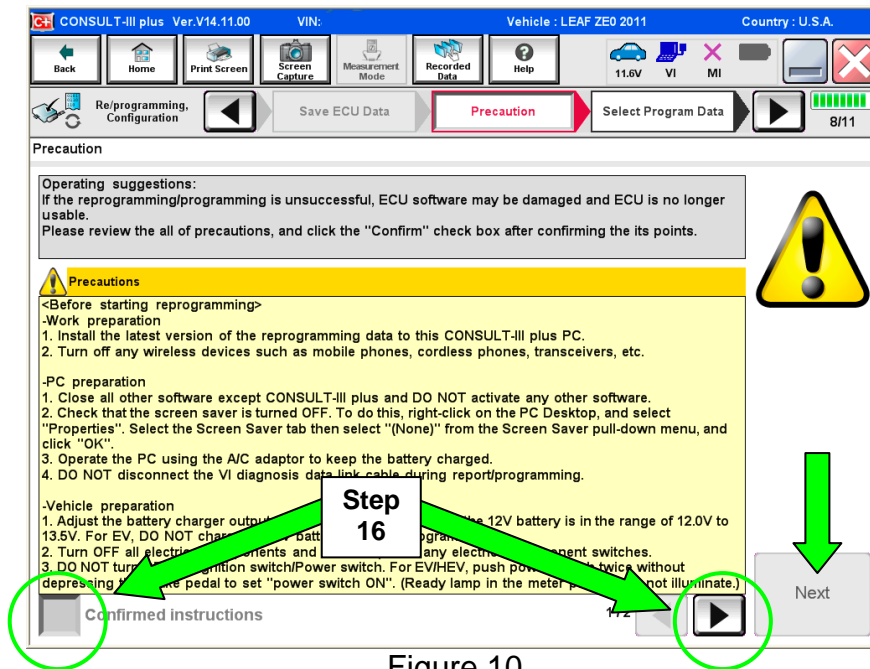


Figure 10

NOTE: In some cases, more than one new P/N for reprogramming is available.

- In this case, the screen in Figure 11 will display.
- Select and use the reprogramming option that **does not** have the message “Caution! Use ONLY with NTBXX-XXX”.
- If you get this screen and it is blank (no reprogramming listed), it means that there is no reprogramming available for this vehicle.

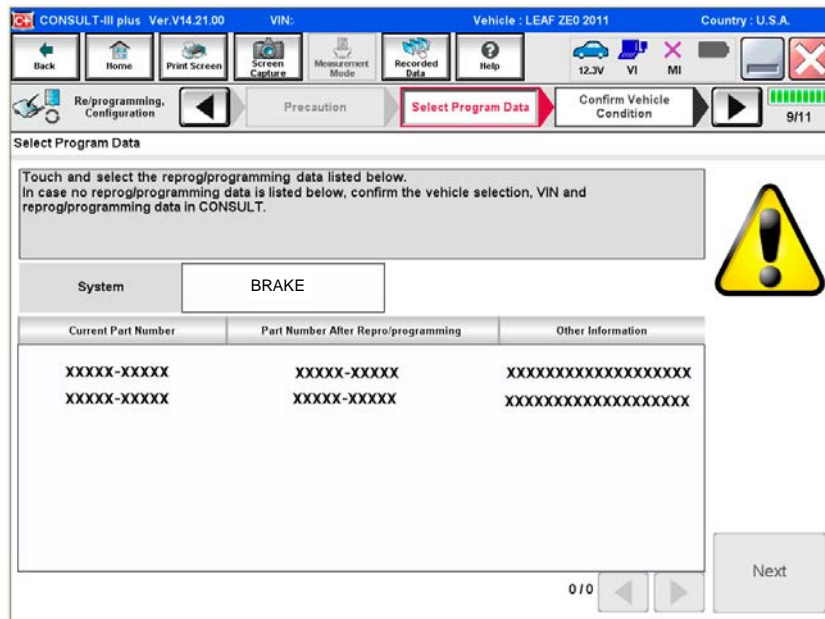


Figure 11

17. Verify “Current” and “After Reprogramming” part numbers are listed, then select **Next**.

- They should be different.

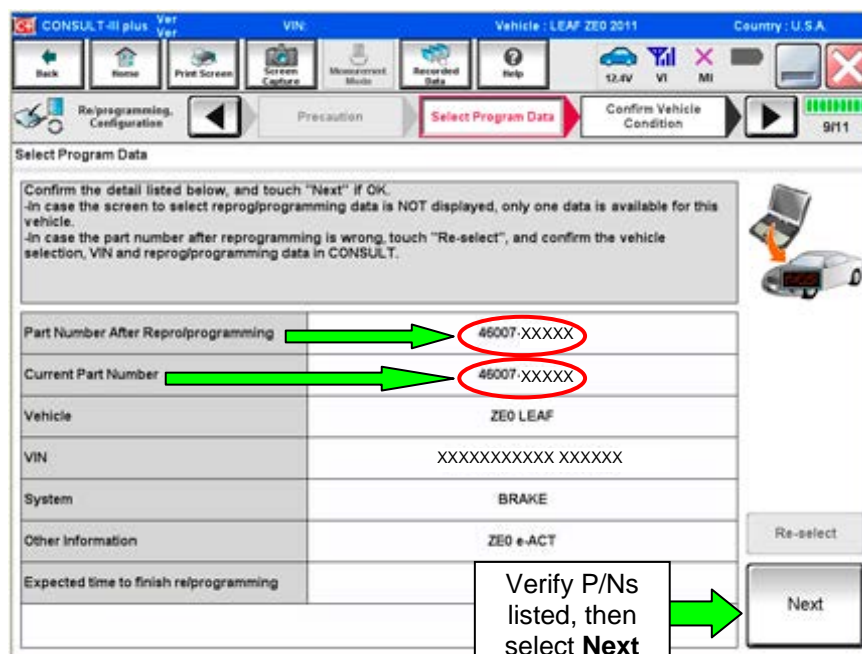


Figure 12

18. Open the hood, and then set up the GR8 Multitasking Battery Diagnostic Station (battery tester/charger) for the 12V battery.

- Set GR8 to ECM Power Supply Mode.

CAUTION: Battery voltage must stay between 12 volts and 15.5 volts.

CAUTION: Do not charge the High Voltage (HV) Lithium Ion battery during reprogramming.

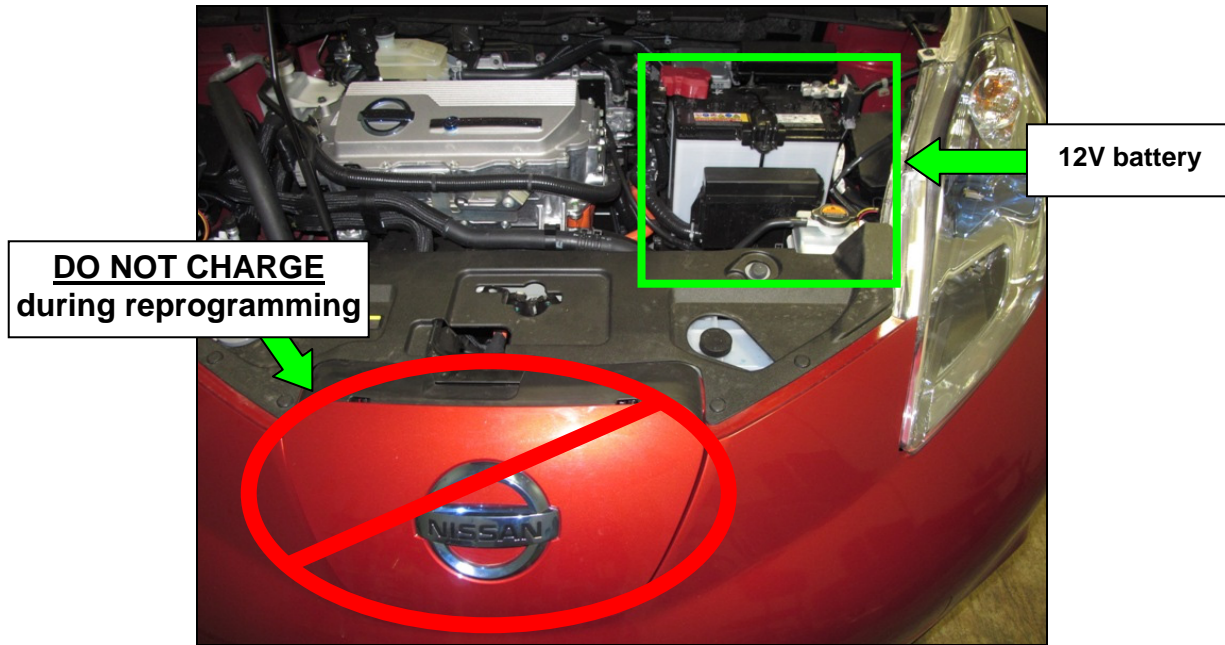


Figure 13

19. Confirm that battery voltage is correct, and then select **Next**.

NOTE: Battery voltage must stay within specified range to make the indicator turn green.

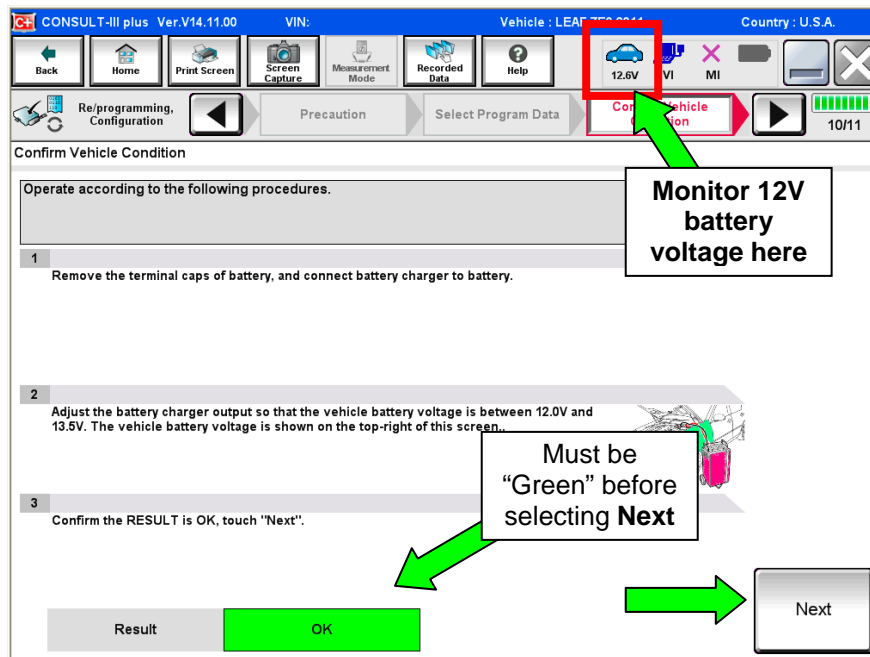


Figure 14

20. On the next screen, select **Start**.

- The reprogramming process begins when **Start** has been selected.

NOTE: For reprogramming to continue, vehicle 12 V battery voltage must stay within 12 volts and 15.5 volts. Make sure the voltage level is sufficient.

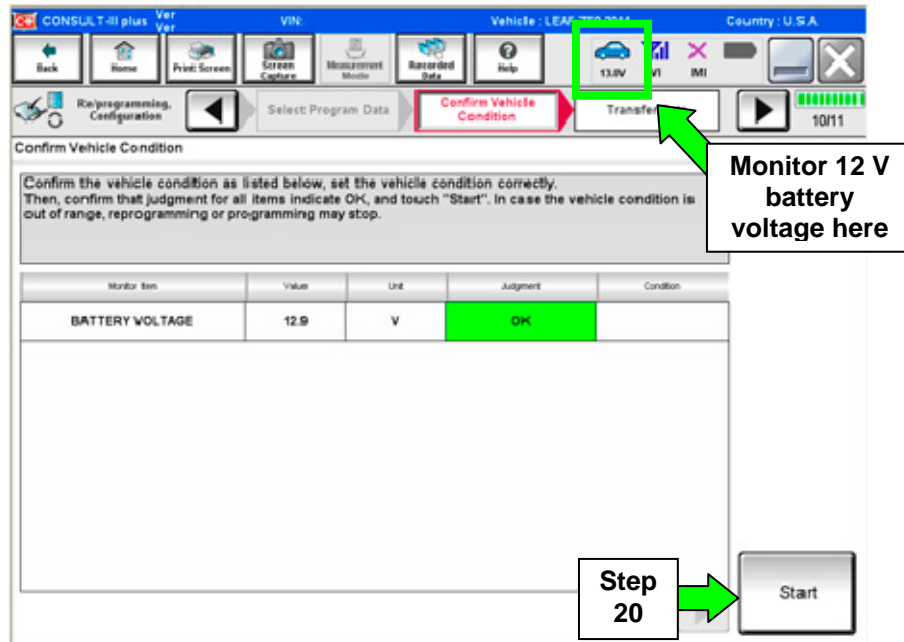


Figure 15

21. Wait for both bar graphs to complete.

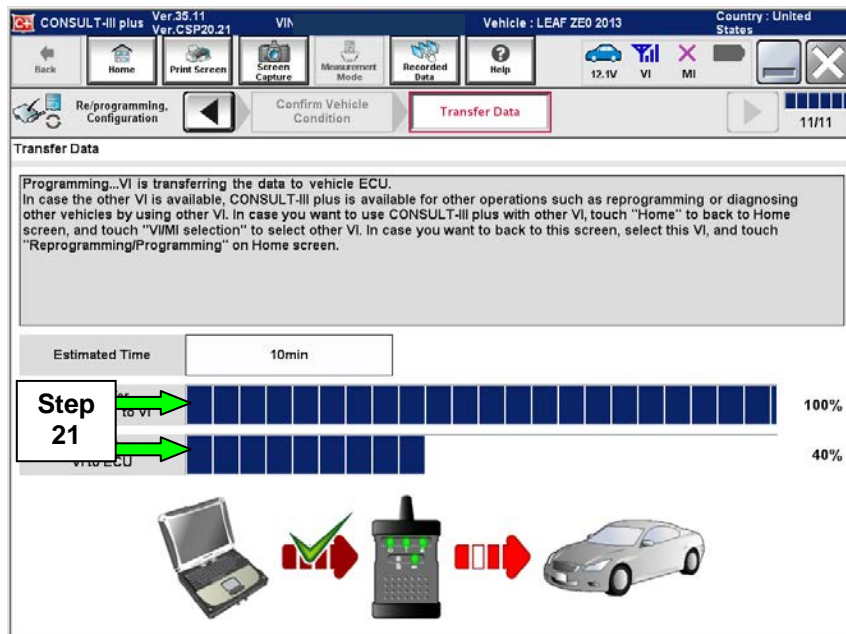


Figure 16

22. When the screen in Figure 17 appears, reprogramming is complete.

NOTE: If the screen in Figure 17 does not display (reprogramming is not complete), refer to the information on page 13.

- a. Select **Next**.
- b. Wait for System Call to complete.

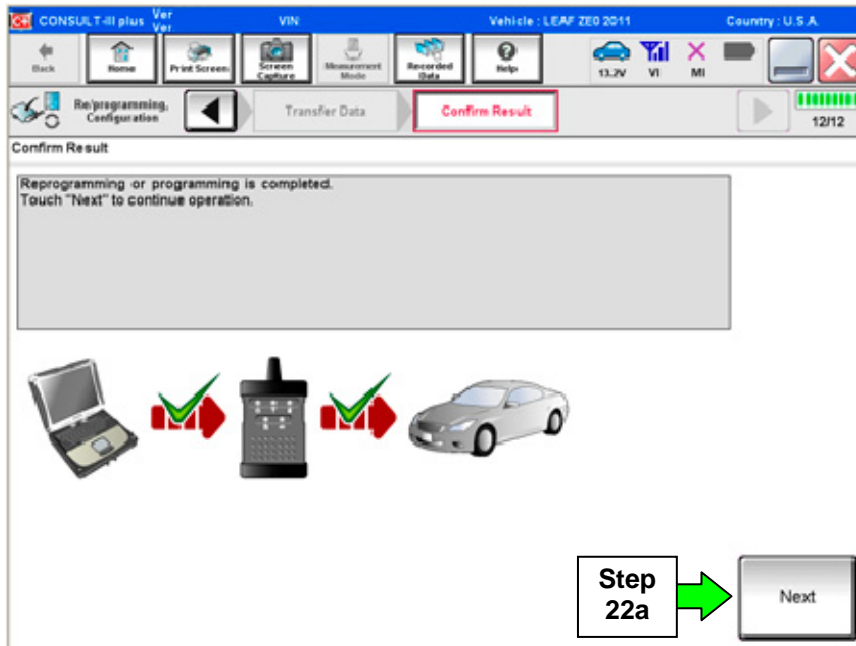


Figure 17

23. Erase all DTCs:

- a. Turn “ignition” off by depressing the power switch once.
 - The screen in Figure 18 will read **OFF** after pressing the power switch once.

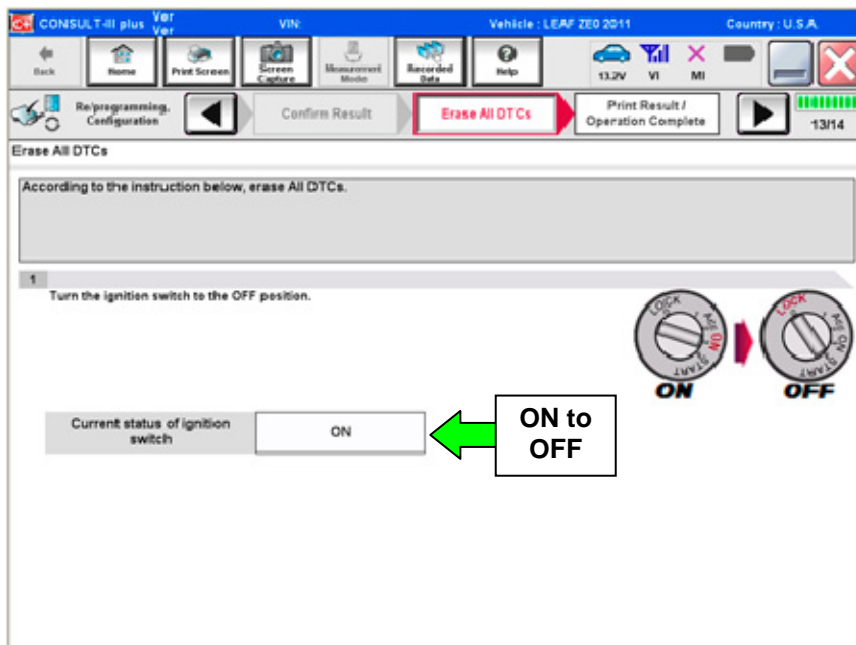


Figure 18

ECM recovery:

Do not disconnect plus VI or shut down C-III plus if reprogramming does not complete.

If reprogramming does not complete and the “!” icon displays as shown in Figure 19:

- Check battery voltage (12.0 – 15.5 V).
- Ignition is ON, Ready Mode is OFF.
- External Bluetooth® devices are OFF.
- All electrical loads are OFF.
- **Select retry and follow the on screen instructions.**
- “Retry” may not go through on first attempt and can be selected more than once.

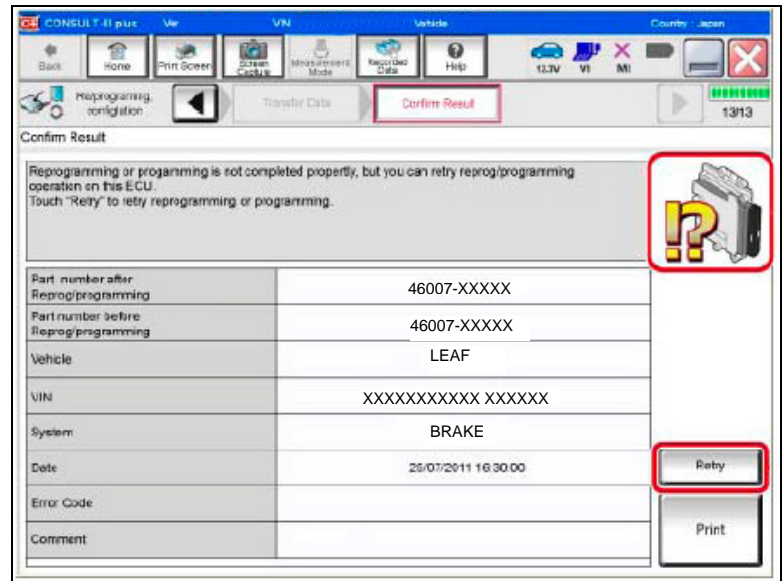


Figure 19

If reprogramming does not complete and the “X” icon displays as shown in Figure 20:

- Check battery voltage (12.0 – 15.5 V).
- CONSULT A/C adapter is plugged in.
- Ignition is ON, Ready Mode is OFF.
- Transmission is in Park.
- All C-III plus / VI cables are securely connected.
- All C-III plus updates are installed.
- **Select Home, and restart the reprogram procedure from the beginning.**

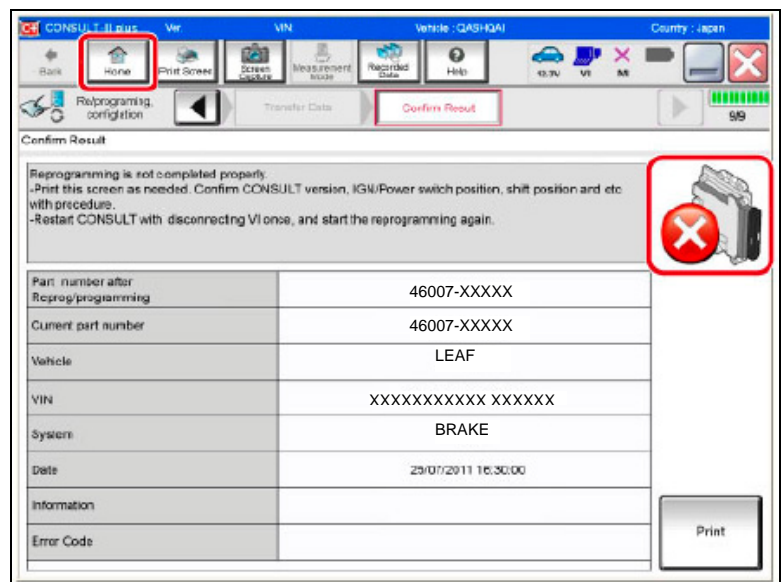


Figure 20

- b. Turn “ignition” on by depressing the power switch twice.
- Do not step on the brake pedal when depressing the power switch.
 - The screen in Figure 21 will read **ON** after pressing the power switch twice.

NOTE: Do not be confused by any screen messages. At this point, simply turn the “ignition” on.

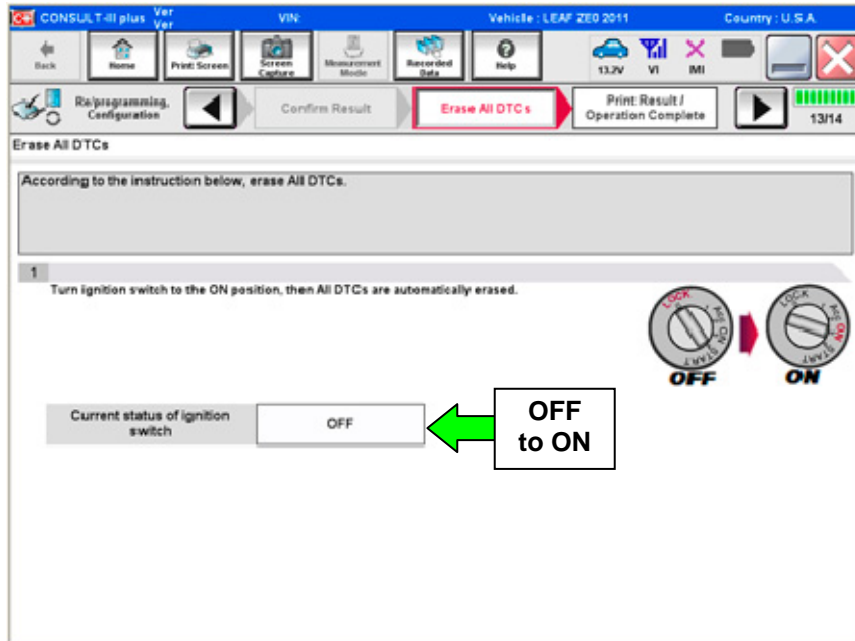


Figure 21

- c. Wait for the bar graph in the **ERASE** window to complete 100%.

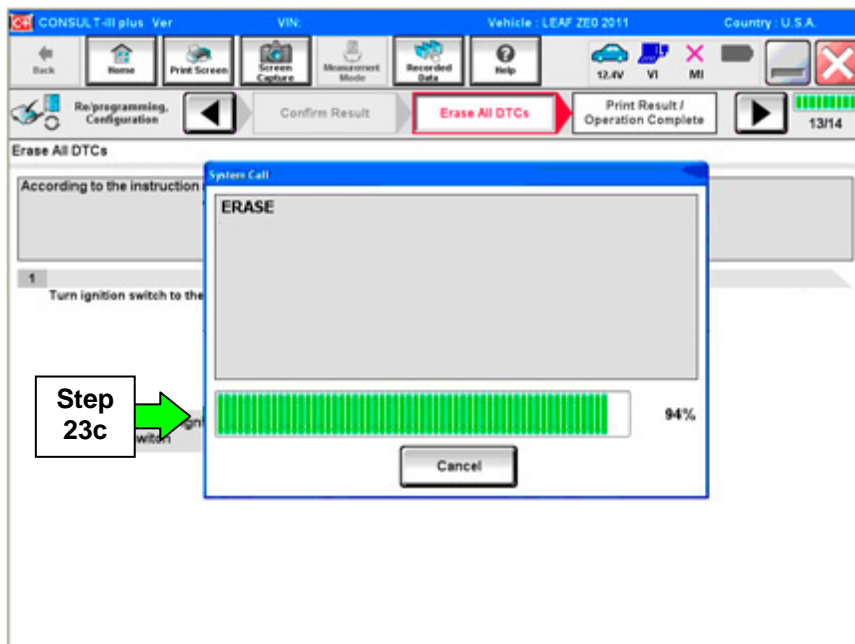


Figure 22

24. Verify the part number has changed.
 - a. Print a copy by selecting **Print**.
 - b. Attach the copy to the repair order.
 - c. Once a copy has been printed, select **Confirm**.

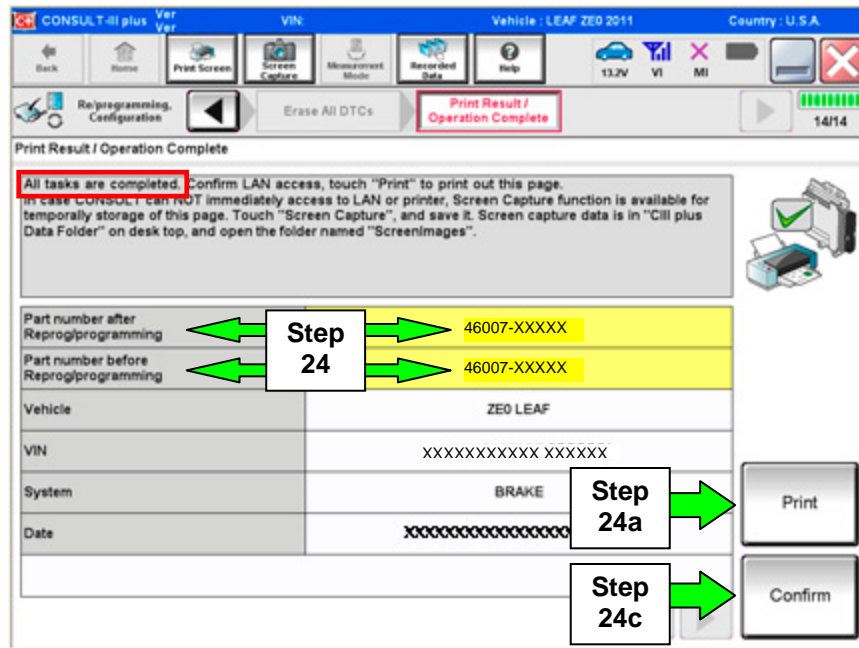


Figure 23

25. Once reprogramming has completed:
 - a. Select **Home**.
 - b. Turn "ignition" off (depress power switch once).
 - Do not close C-III plus at this time.
 - c. Disconnect the battery tester/charger from the 12 V battery.

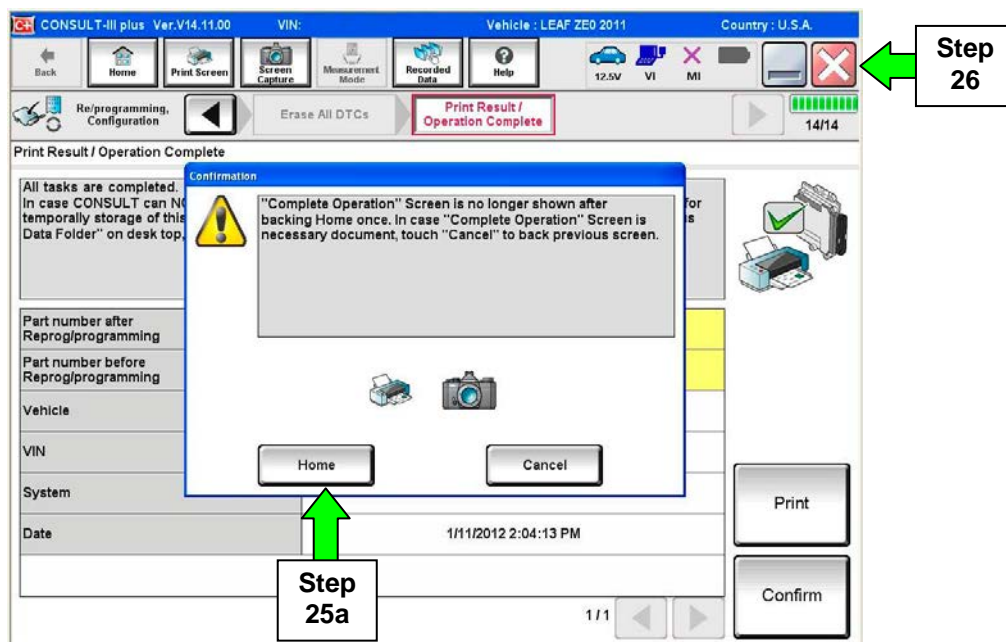


Figure 24

26. Close C-III plus (see previous page, Figure 24).

- Do not turn off the CONSULT PC.

27. Place the vehicle in “READY to drive” mode:

- Apply the parking brake.
- Depress the brake pedal.
- Depress the power switch once.
- The meter and gauges will illuminate.

28. Open C-III plus.

29. Once the plus VI is recognized, select **Diagnosis (All Systems)**.

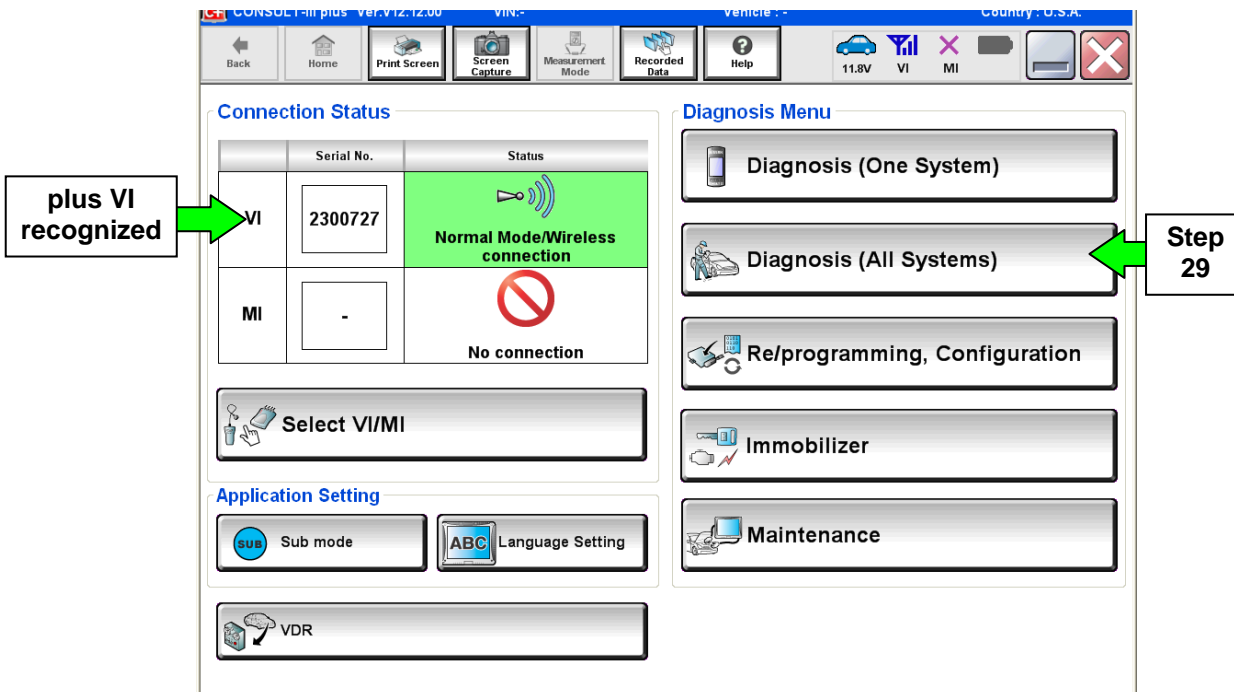


Figure 25

30. Select **LEAF** and **2013** or **Automatic Selection (VIN)**.

- If **Automatic Selection (VIN)** is selected, wait for the **Reading VIN** screen to complete.

31. Select **Select** or **Detect Vehicle**, whichever displays.

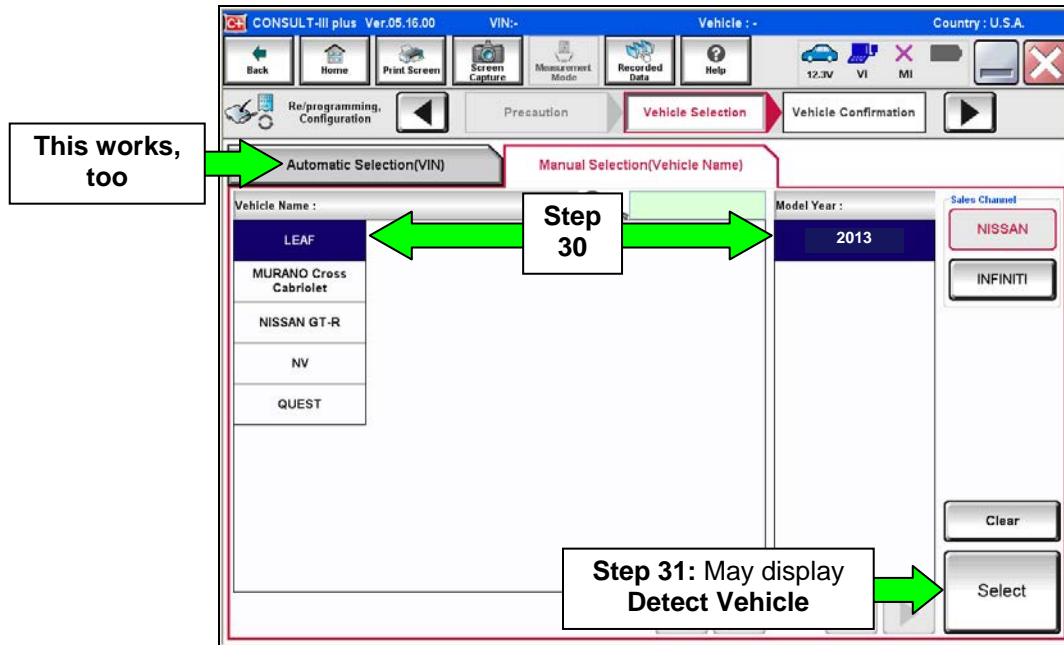


Figure 26

32. Verify the VIN in **VIN or Chassis #** matches that of the vehicle's.

- If the correct VIN exists, select **Confirm**.

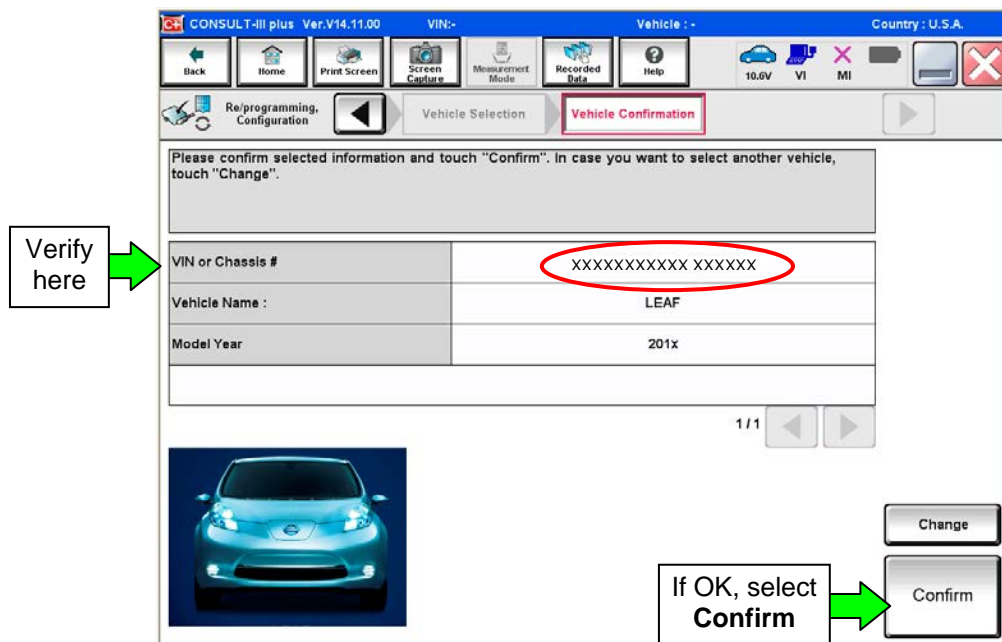


Figure 27

33. Wait for system call to complete.

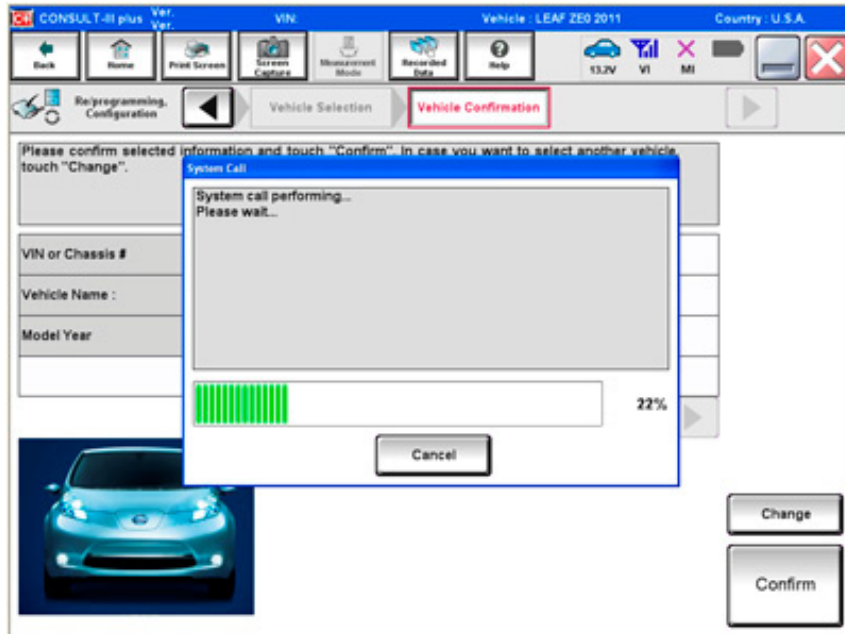


Figure 28

34. To clear any remaining DTC's (as shown in Figure 29):

- a. Turn "ignition" off (depress power switch once).
- b. Close CIII plus application.
- c. **Wait for 5 minutes.**

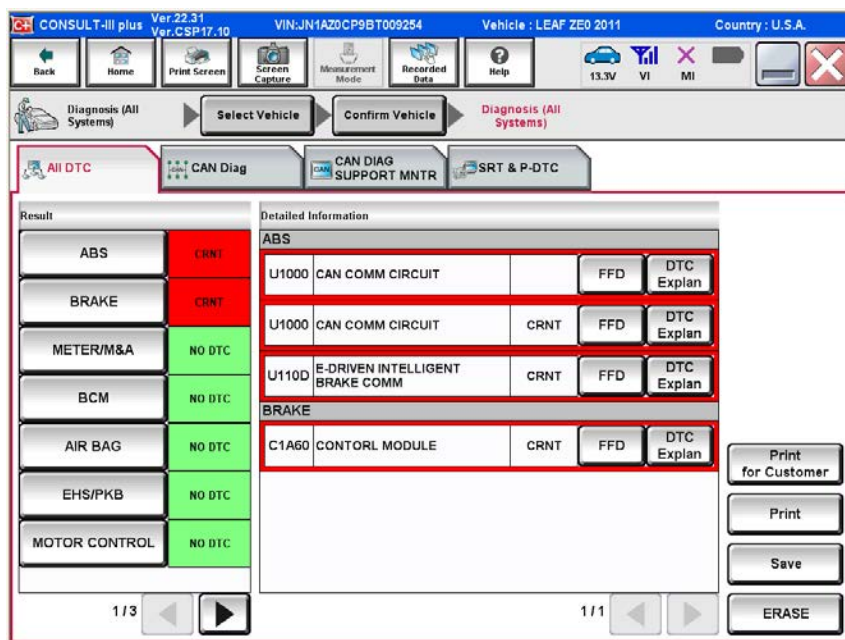


Figure 29

35. After 5 minutes, check DTC status by again performing steps 27 through 33. Once done proceed to step 36.

- Figure 30 should now be displayed with C1A60 as a PAST DTC.

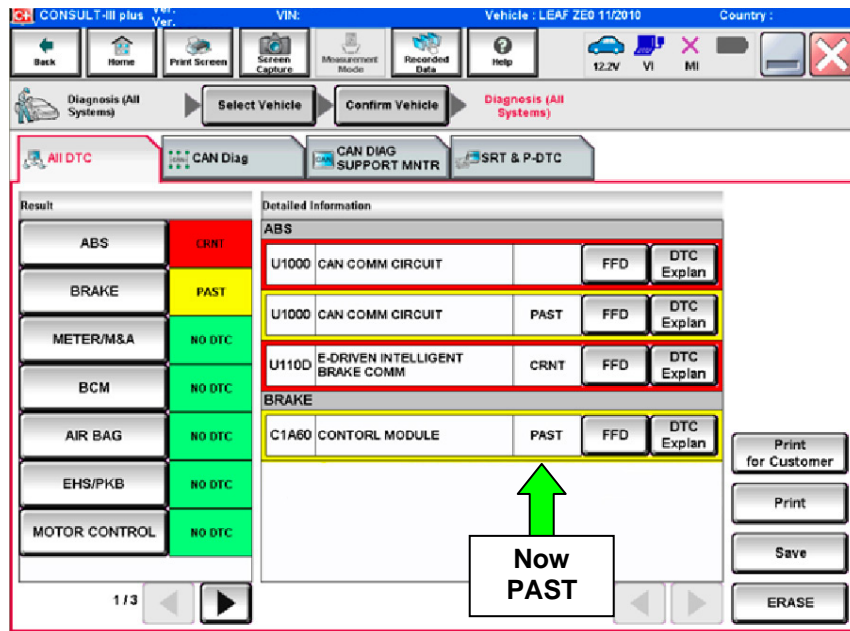


Figure 30

36. Turn "ignition" OFF again (depress power switch once), and **wait 15 seconds**; then turn ignition to "READY to drive" mode.

- Figure 31 should now be displayed with U110D as a past DTC.

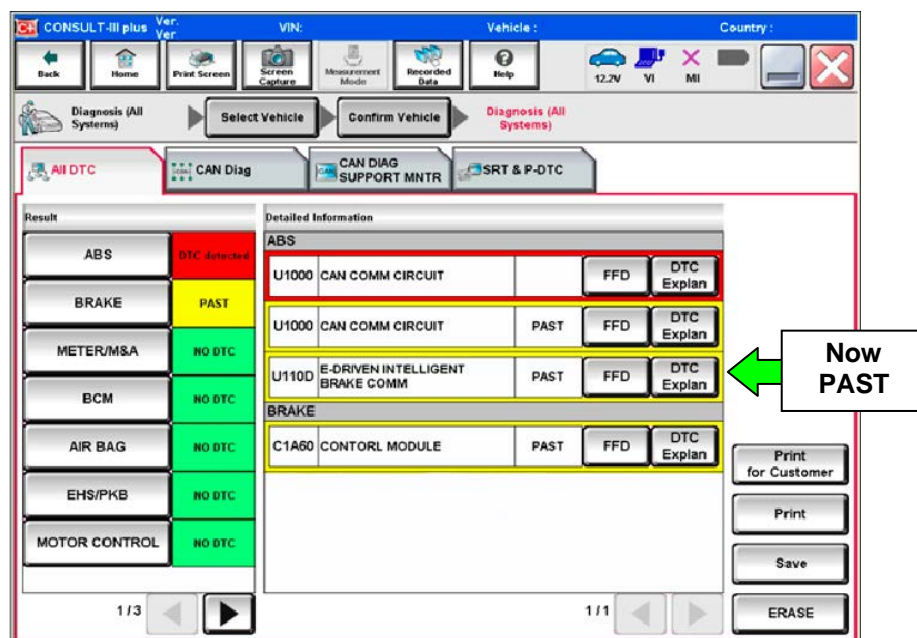


Figure 31

37 Select **ERASE** button.

- All DTC's should now be clear.

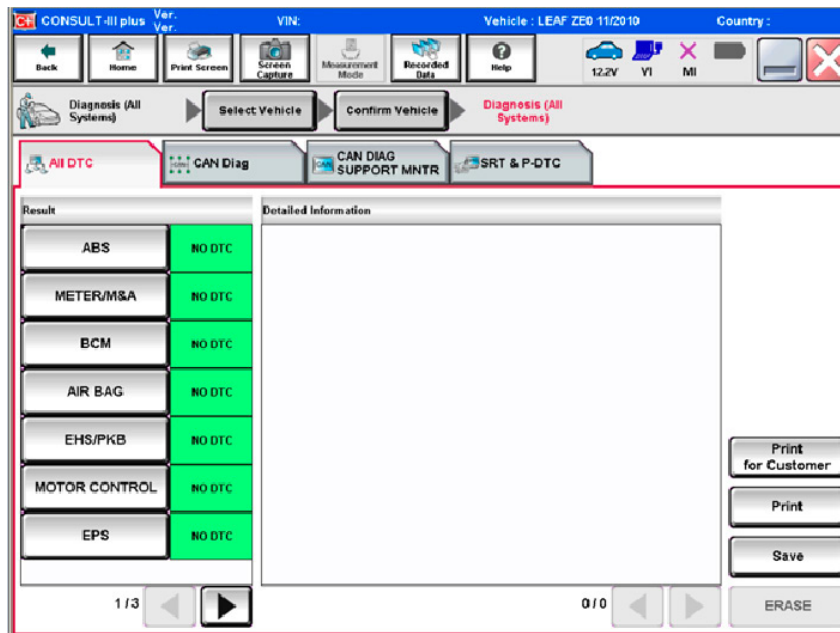


Figure 32

38. Once all DTCs have been erased:

- a. Select **Home**, and then on the next screen, select **Yes** (picture not shown).
- b. Close C-III plus, turn off the CONSULT PC, and then disconnect the CONSULT PC and plus VI from the vehicle.
- c. Turn “ignition” off (depress power switch once).

39. Verify the repair is complete:

- a. Place the vehicle in the “READY to drive” mode (press power switch while stepping on the brake pedal).
- b. Verify no error messages are displayed in the meter and gauges or center multi-function control panel.
- c. If the timer for either charging or climate control was on prior to reprogramming, turn them back on.

CLAIMS INFORMATION

Submit a Primary Part (PP) line claim using the following claims coding:

DESCRIPTION	PFP	OP CODE	SYM	DIA	FRT
Reprogram E-Act	(1)	PX65AA	ZE	32	0.5

(1) Refer to the electronic parts catalog (FAST) and use the appropriate Brake Controller assembly (46007-*****) as the Primary Part (PFP).

