



SB-10055252-1245

Technical Service Bulletin

SUBJECT:			No: TSB-14-35-001
UPDATED BRAKE PIPE TORQUE SPECIFICATIONS – SERVICE MANUAL REVISION			DATE: February, 2014
			MODEL: 2014 Mirage
CIRCULATE TO:	<input type="checkbox"/> GENERAL MANAGER	<input type="checkbox"/> PARTS MANAGER	<input checked="" type="checkbox"/> TECHNICIAN
<input checked="" type="checkbox"/> SERVICE ADVISOR	<input checked="" type="checkbox"/> SERVICE MANAGER	<input type="checkbox"/> WARRANTY PROCESSOR	<input type="checkbox"/> SALES MANAGER

PURPOSE

This TSB updates torque specifications for the attachment of brake pipes to the brake master cylinder and ASC hydraulic unit.

AFFECTED VEHICLES

2014 Mirage

AFFECTED SERVICE MANUALS

2014 Mirage service manual:

Group 35A – Basic Brake > Master Cylinder Assembly and Brake Booster Assembly > Removal and Installation

Group 35C – Active Stability Control System (ASC) > Hydraulic Unit > Removal and Installation

Please add the following updates to the 2014 Mirage service manual, Group 35A – Basic Brake > Master Cylinder Assembly and Brake Booster Assembly > Removal and Installation

BASIC BRAKE
 MASTER CYLINDER ASSEMBLY AND BRAKE BOOSTER ASSEMBLY

MASTER CYLINDER ASSEMBLY AND BRAKE BOOSTER ASSEMBLY

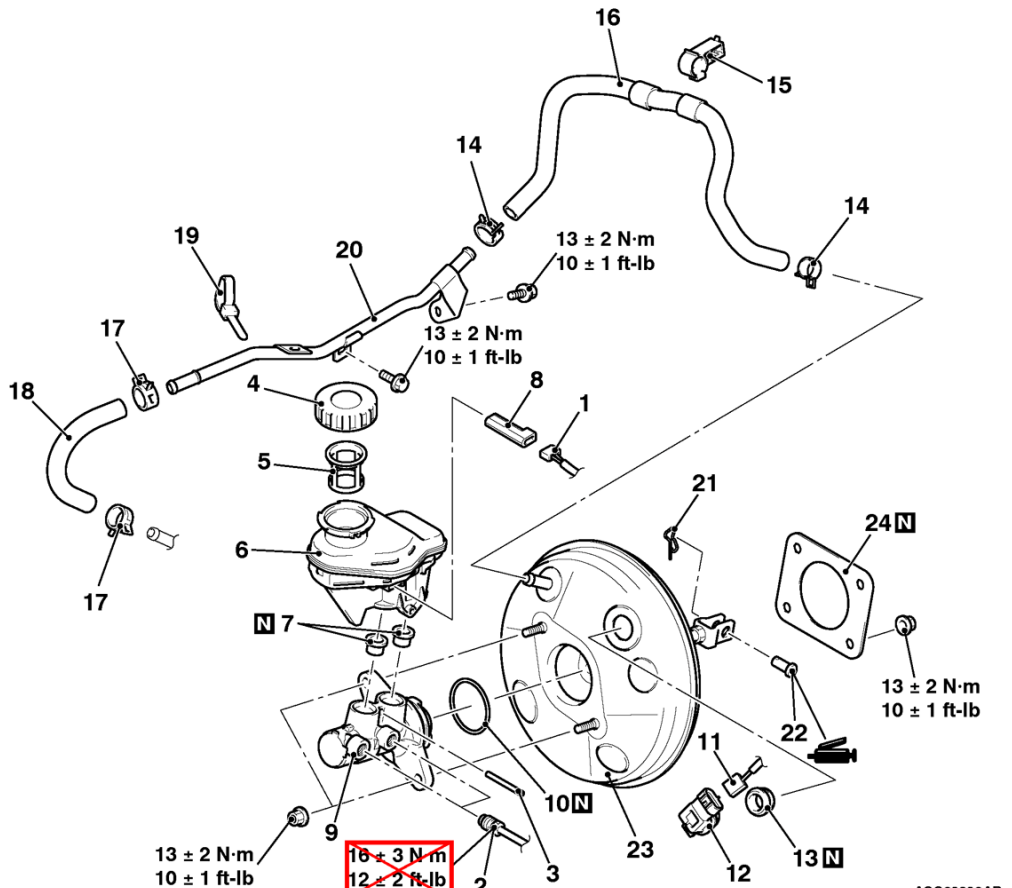
REMOVAL AND INSTALLATION

M1351003703354

CAUTION

The master cylinder cannot be disassembled. Be careful not to remove the primary piston.

<p>Pre-removal Operation</p> <ul style="list-style-type: none"> • Brake Fluid Draining • Battery Removal (Refer to GROUP 54A – Battery). 	<p>Post-installation Operation</p> <ul style="list-style-type: none"> • Battery Installation (Refer to GROUP 54A – Battery). • Brake Fluid Supplying and Air Bleeding (Refer to). • Brake Pedal Adjustment
---	---



ACC03230AB

- Removal steps**
1. Brake fluid level switch connector
 2. Brake pipe connection
 3. Pin
 4. Reservoir cap
 5. Reservoir filter

~~16 ± 3 N·m
12 ± 2 ft·lb~~
**20 ± 3 N·m
15 ± 2 ft·lb**
 <New>

- Removal steps (Continued)**
6. Reservoir assembly
 7. Reservoir seal
 8. Brake fluid level switch
 9. Brake master cylinder assembly
 10. O-ring
 11. Brake vacuum sensor connector

Please add the following updates to the 2014 Mirage service manual, Group 35C – Active Stability Control System (ASC) > Hydraulic Unit > Removal and Installation

ACTIVE STABILITY CONTROL SYSTEM (ASC)
HYDRAULIC UNIT

Tester connection	When the ASC OFF switch is released (Not being operated)	When the ASC OFF switch is pressed
2 – 5	Open circuit	Continuity exists (2 ohms or less)
3 – 4	Continuity exists (2 ohms or less)	Continuity exists (2 ohms or less)

HYDRAULIC UNIT

REMOVAL AND INSTALLATION

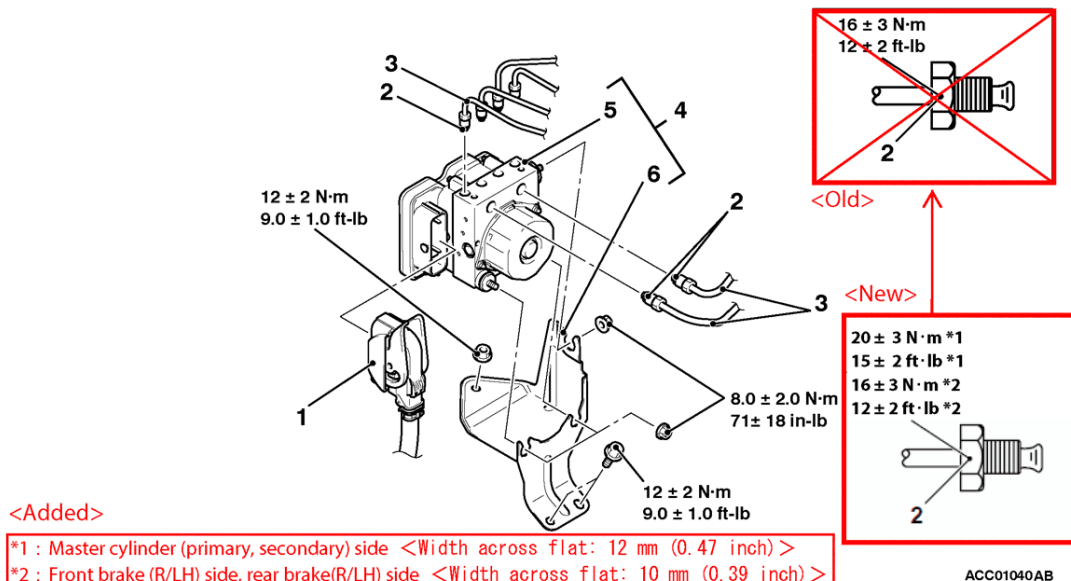
M1355005600947

NOTE: ASC-ECU is located in the hydraulic unit.

CAUTION

When the hydraulic unit (integrated with ASC-ECU) is replaced, after turning the ignition switch ON or OFF (vehicle information from ETACS-ECU is registered), always carry out the calibration of steering wheel sensor and G and yaw rate sensor.

Pre-removal operation	Post-installation operation
<ul style="list-style-type: none"> Brake fluid draining. 	<ul style="list-style-type: none"> Brake fluid refilling and air bleeding (Refer to GROUP 35A – On-vehicle Service, Bleeding). Hydraulic unit check



- >>A<<
- Removal steps**
- ASC-ECU harness connector
 - Brake tube connection
 - Brake tube

- <<A>>
- Removal steps (Continued)**
- Hydraulic unit (ASC-ECU) and hydraulic unit bracket
 - Hydraulic unit (ASC-ECU)
 - Hydraulic unit bracket assembly