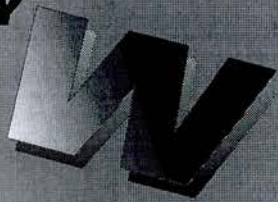


WARRANTY
CAMPAIGN

ROADSTER
WARRANTY
Bulletin



CAUTION: All involved customers must be notified, all involved units must be corrected as per instructions herein.

Campaign no.: 2013-0015
2013-0016

January 23, 2014

Subject: **Spyder™**

No. **2013-9**

- A - Seal the Front Fuse Boxes**
- B - Update ECM Software**
- C- Replace upper belt guard retaining screws**

YEAR	MODEL	MODEL NUMBER	SERIAL NUMBER
2013	All	All	Search for your VIN in Knowledge Center More information at end of bulletin

PROBLEM

A - Seal the front fuse boxes

Water may infiltrate either of the front fuse boxes. The source of the infiltration may be:

1. The fuse box cover.
2. The bus-bar connection behind fuse box
3. Any of the wire splices behind fuse box.

B - Update ECM software

Code P1614 may be triggered and cause a limp home mode when starting the engine.

The indicator lamp and message HI TEMP may appear at engine startup, even if unit is at normal operating temperature.

Engine heat felt by the driver may be uncomfortable.

C - Replace upper belt guard retaining screws

Retaining screws may not secure the belt guard properly.

SOLUTION

A - Seal the front fuse boxes

1. Replace the fuse box covers.
2. Apply liquid tape around base of bus-bar.
3. Apply liquid tape into and around all splices behind fuse boxes.

B - Update ECM with latest software

Update ECM with latest software to correct the outlined problems.

NOTE: Updating the software may slightly improve riders comfort from heat in some riding conditions. The portion of the update that addresses uncomfortable heat felt by the driver is applicable to non-CARB vehicles only.


C - Replace upper belt guard retaining screws

The new screws will properly secure the belt guard.

PARTS REQUIRED

Solution A

Order parts through the regular channel.

DESCRIPTION	PART NUMBER	QTY
Right fuse box cover	710 004 177	1
Left fuse box cover	710 004 176	1
Locking tie	414 115 200	6
Liquid electrical tape ¹	Canada: 85121 USA: 85120	As required
¹ Liquid electrical tape is not sold by BRP, it is available locally. BRP has tested PERMATEx® LIQUID ELECTRICAL TAPE (P/N 85121) with good results.		

Solution B

B.U.D.S. - R3.5.1 (or newer) for Roadster

Solution C

DESCRIPTION	PART NUMBER	QTY
M6 X 12 Torx screw	250 000 454	2

Note
Because of the complexity of this bulletin, we recommend to read it completely and understand the procedure steps before performing any work. Not all vehicles require every campaign listed in this bulletin. Use the problem table to properly identify which problem(s) the vehicle is involved with.

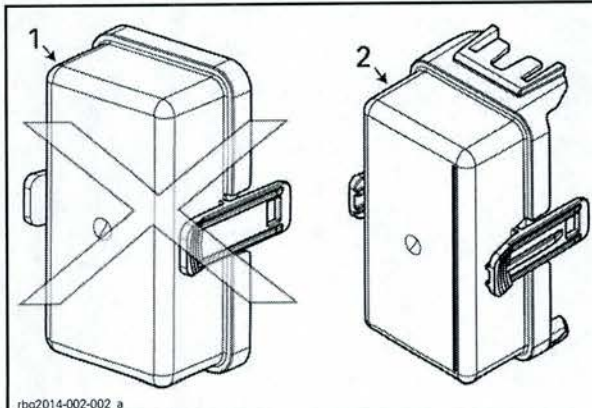
PROBLEM			
MODEL	A - SEAL THE FRONT FUSE BOXES	B - UPDATE ECM WITH LATEST SOFTWARE	C - REPLACE UPPER BELT GUARD RETAINING SCREWS
RS ST (All except Brazil)	A	B	C
RS ST (Brazil)	A		C
RT (All except Brazil)	A	B	
RT (Brazil)	A		

Permatex® is a trademark of Permatex Corporation.

PROCEDURE

A - Replace Fuse Box Covers

Repeat procedure for each fuse box.



rbg2014-002-002_a

1. Old fuse box cover
2. New fuse box cover

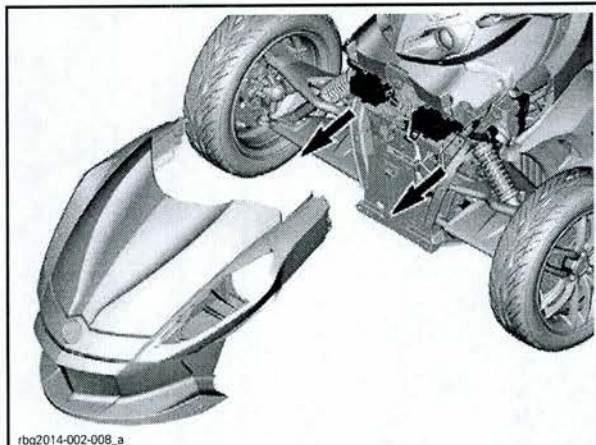
1. Remove old covers.

IMPORTANT In the event you discover signs of corrosion or presence of water in the fuse box, **STOP** and communicate with the BRP technical support department by submitting a **BOSSWeb case with pictures**. A service representative will communicate with you providing detailed information based on the situation.

2. Transfer fuses to new covers.

A - Remove Front Storage Compartment

NOTICE Disconnect negative battery terminal.

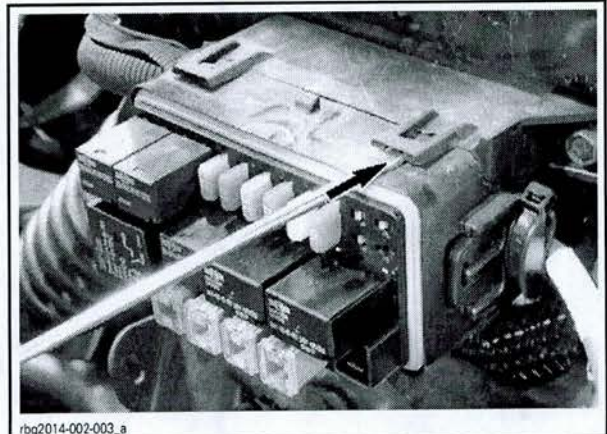


rbg2014-002-008_a

Refer to appropriate *SHOP MANUAL* for procedure.

A - Seal Wire Splices Behind Fuse Box

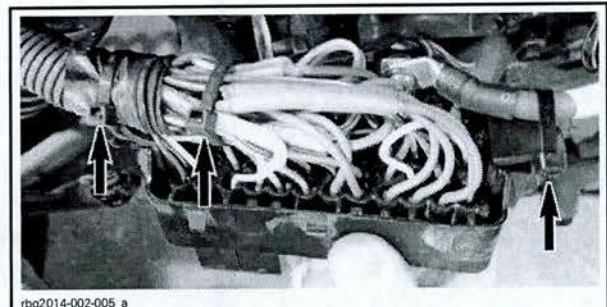
1. Carefully unclip a fuse box.



rbg2014-002-003_a

RH FUSE BOX SHOWN

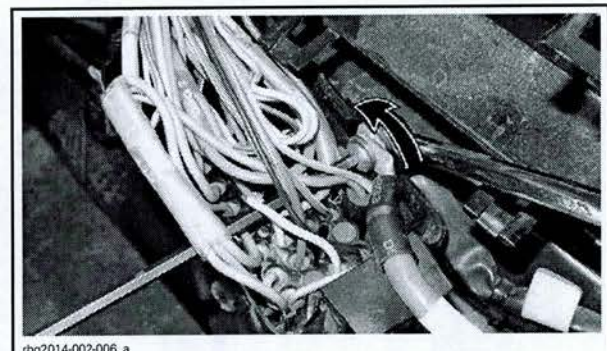
2. Note position and cut locking ties.



rbg2014-002-005_a

RH FUSE BOX SHOWN

3. Remove the power cable to the bus bar.



rbg2014-002-006_a

RH FUSE BOX SHOWN

4. Remove electrical tape as needed to expose all wire splices behind the fuse box.
5. Seal both ends of all the wire splices with liquid tape.

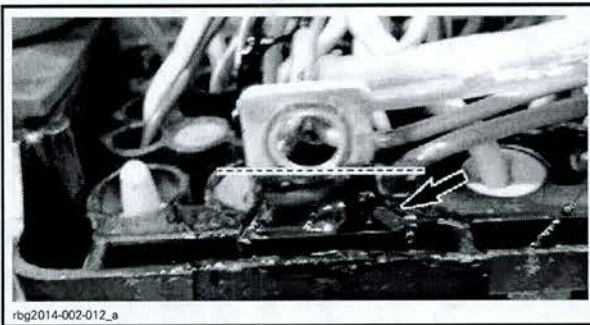
NOTE: Extend liquid tape onto wires and push the liquid tape into both ends of the splice for a good seal.



TYPICAL LIQUID TAPE APPLICATION

A - Seal the Bus-Bar Connection Behind Fuse Box

1. Apply liquid tape around the base of the bus-bar. Do not exceed the dotted line area.



TYPICAL LIQUID TAPE APPLICATION

2. Reinstall power cable on bus bar.

TIGHTENING TORQUE	
Power cable to bus-bar nut	5 N•m ± 1 N•m (44 lbf•in ± 9 lbf•in)

3. Install new locking ties.
4. Reinstall fuse box on its support. Make sure it is properly clipped.
5. Install new fuse box cover.

Repeat the procedures for the other fuse box:

- Seal wire splices behind fuse box.
- Seal the bus-bar connection behind fuse box.

6. Reconnect battery.
7. Reinstall front storage compartment.

NOTE: Vehicle reassembly and electrical circuit activation can occur before the cure time indicated on liquid tape bottle has elapsed. In the procedure outlined herein the liquid tape does not insulate the wire - the liquid tape is used to seal points of water infiltration.

NOTICE Do not wash or otherwise expose vehicle to water for 4 hours.

B - Update ECM with latest software

The following B.U.D.S. version is required and available on *KNOWLEDGE CENTER*:

B.U.D.S. - R3.5.1 (or newer) for Roadster

1. Click on "Advanced Search".
2. Select "Diagnostic Software".
3. In the keyword(s) field, type in the B.U.D.S. single file number.
4. "SEARCH".
5. Identify and download proper file.

Please note that you can also type in the keyword(s) field the B.U.D.S. single file number directly without going in the "Advanced Search".

B - Preparation

Computer and Vehicle Preparation

NOTICE

Continuous power to the computer and to the vehicle is mandatory during this operation or damage to a module could occur.

Be sure to disable the computer screen saver.

If using a portable computer, be sure to provide a continuous supply of electrical power by connecting it to a wall outlet.

To ensure there is enough power to the vehicle electronic modules to complete the software updates, use a portable power pack.

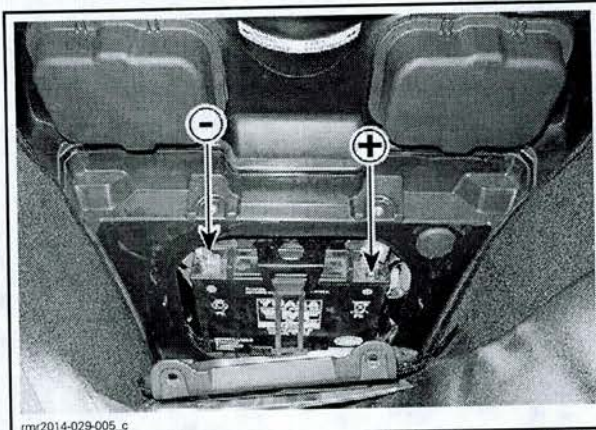
NEVER use a battery charger instead of portable power pack. The battery charger may cause electrical noise causing problems during the update.

These software updates of the vehicle modules will take some time to complete and **MUST NOT** be interrupted.

Although computer screen may blank or may seem to freeze for a while, do **NOT** interrupt B.U.D.S. to allow updates to be completed. Do not touch the PC.

Although the cluster will blank, do **NOT** interrupt B.U.D.S. to allow updates to be completed. Do not touch the vehicle.

1. Ensure the vehicle battery is fully charged.
2. Connect a portable power pack (fully charged) to the vehicle battery.



CONNECTION AT BATTERY POSTS, BEHIND BATTERY ACCESS PANEL IN FRONT STORAGE COMPARTMENT

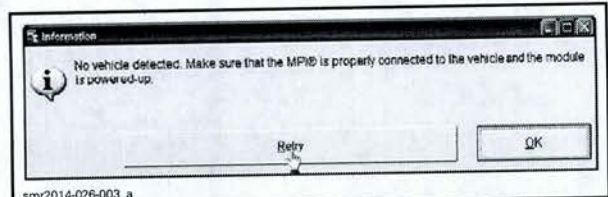


TYPICAL - IGNITION KEY ON

B.U.D.S. Connections

1. Connect MPI before starting B.U.D.S. to ensure proper operation. Refer to the applicable *SHOP MANUAL* for details:
 - Section 03: *ELECTRONIC MANAGEMENT SYSTEMS*
 - Subsection 03: *COMMUNICATION TOOLS AND B.U.D.S.*

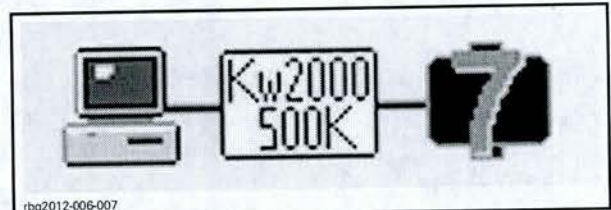
NOTE: If the following message does not automatically go away, click the **Retry** button.



RETRY BUTTON

MANDATORY TOOLS	
A personal computer (laptop or desktop)	
MPI-2 INTERFACE CARD (P/N 529 036 018)	
MPI-2 DIAGNOSTIC CABLE (P/N 710 000 851)	
OPTIONAL TOOL	
Extension cable available at electronic retail outlets. Do not exceed 7.5 m (25 ft)	

Compare number of modules shown in B.U.D.S. with following table.



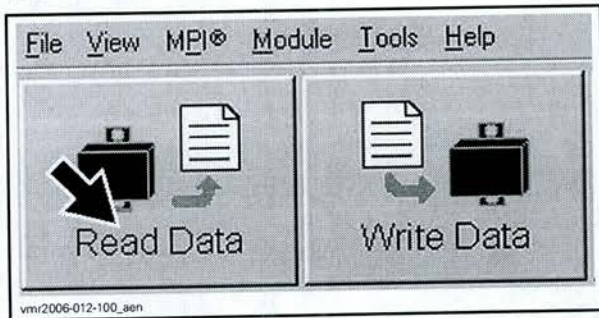
EXAMPLE

MODEL	NUMBER OF MODULES CONNECTED
RT SM5	6
RT SE5	7
RS SM5	5
RS SE5	6
ST SM5	6
ST SE5	7

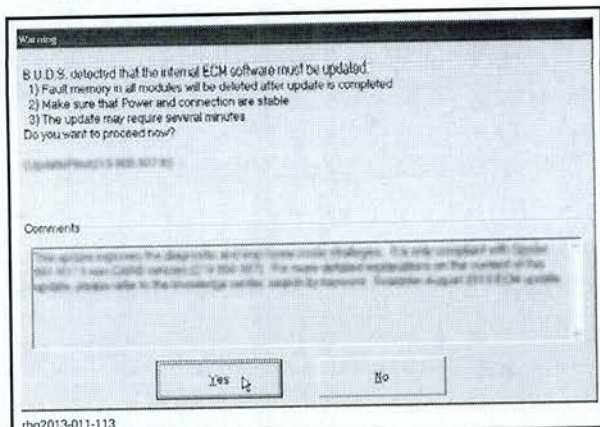
NOTE: If a CAN Configuration Kit (CCK) is installed, the number of modules listed in B.U.D.S. will be increased by one.

B - ECM Software Update

1. Click on Read Data.

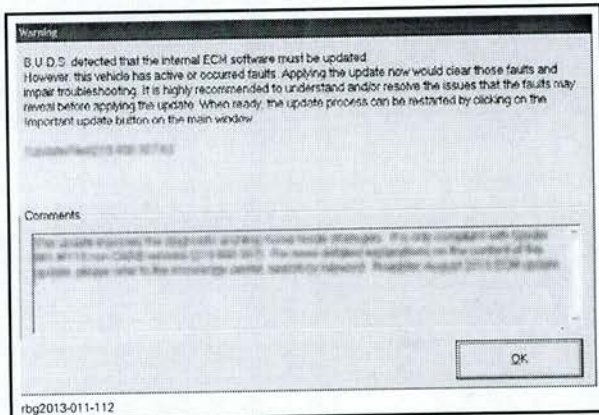


2. When the following message appears, click "Yes" to start the update.



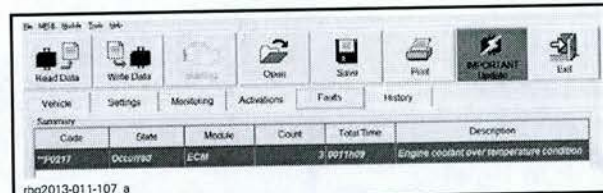
ECM UPDATE CONFIRMATION - CLICK "YES"

3. If the following message appears, then there is "Active" or "Occurred" fault(s).



- 3.1 Clicking "OK" will prompt you to the FAULT screen.
- 3.2 Before proceeding with the update, fault codes relating to a current customer complain should be repaired; all other fault codes should be cleared.

NOTE: The following top menu button will continue to flash until the ECM software update is performed.

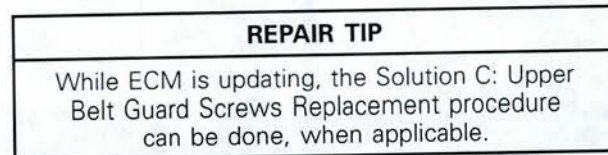


ECM SOFTWARE UPDATE REMINDER

- 3.3 Click on "Important Update" to proceed.

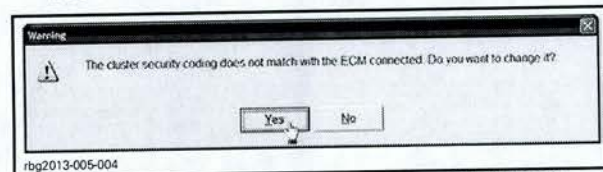
ECM Software Update continued

NOTICE While the ECM is being updated, an hour glass will appear on the computer. The computer screen and cluster might also go blank. **DO NOT TOUCH ANYTHING** (PC and vehicle) until the following message appears. Then, click the "OK" button.



SUCCESSFUL ECM UPDATE CONFIRMATION - CLICK "OK"

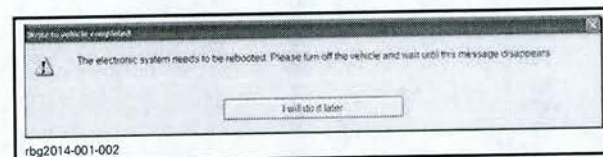
4. When the following message appears, click "Yes".



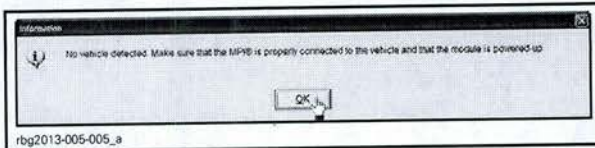
CLUSTER SECURITY MATCHING REQUEST - CLICK "YES"

5. When the following message appears:

- 5.1 Turn ignition key to OFF.
- 5.2 Wait until the message vanishes.



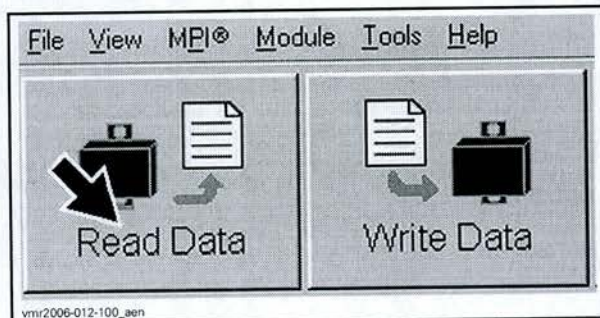
6. When the following message appears, turn ignition key to ON then click the "OK" button.



7. The ECM software update is completed.

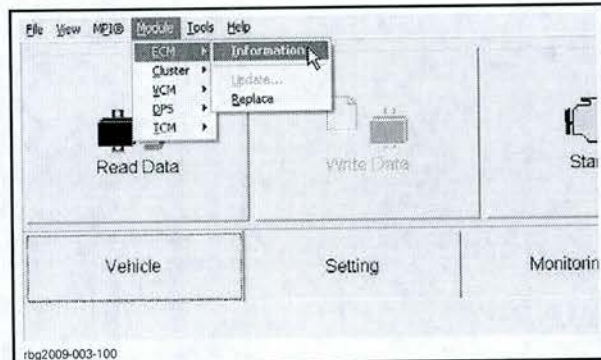
B - Update Validation

1. Click on Read Data button.



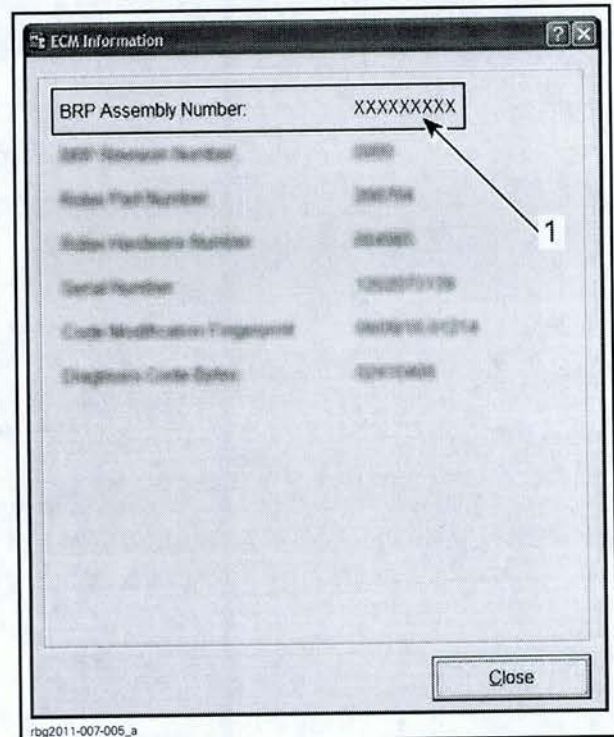
READ DATA BUTTON

2. Check if the update has been successful.



MODULE, ECM, INFORMATION

3. Look at the "BRP Assembly Number", compare with list in table.



TYPICAL

1. BRP Assembly number

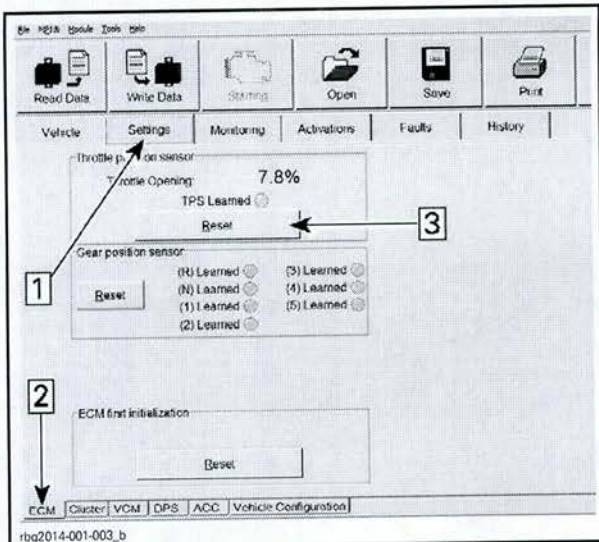
ECM INFORMATION		
BRP assembly number	MY 2013	420666631 420666636 420666641 420666646

4. If any number in the table is found in B.U.D.S., then the update was successful.

5. If a wrong number is found, repeat the update procedure.

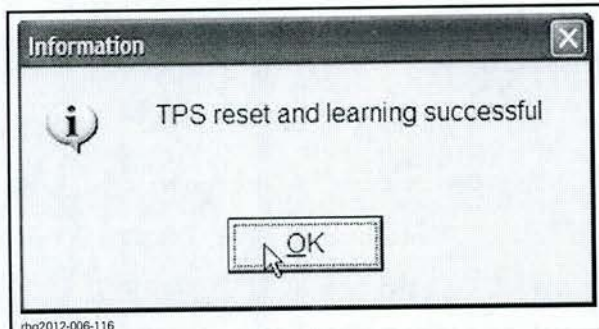
B - TPS Reset

1. In B.U.D.S., click the items in the illustrated order.



Step 1: Setting tab
 Step 2: ECM tab
 Step 3: Reset (TPS)

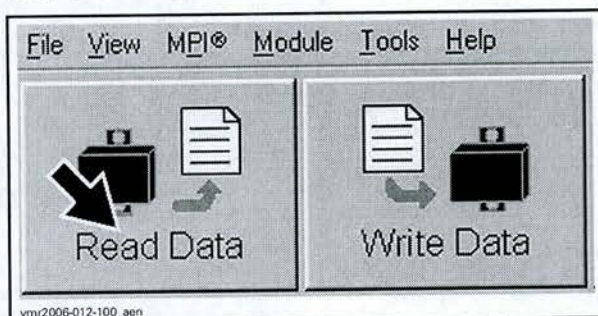
2. When the following message appears, click "OK".



CLICK "OK"

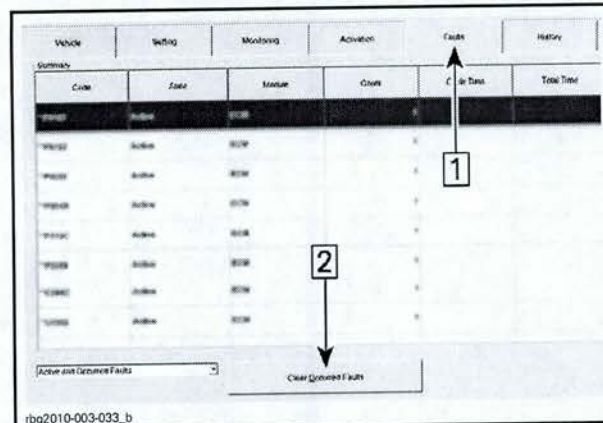
B - Clearing Faults

1. In B.U.D.S., click on Read Data.



READ DATA BUTTON

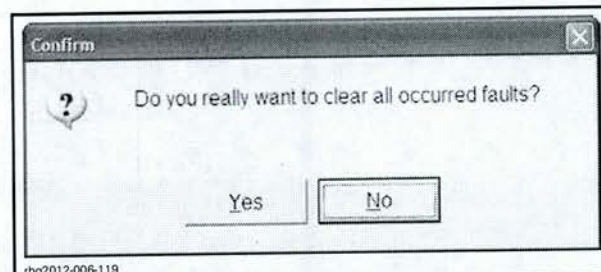
2. Click the items in the illustrated order.



CLEARING FAULTS

Step 1: Faults
 Step 2: Click "Clear Occurred Faults" button

3. When the following message appears, click "Yes".

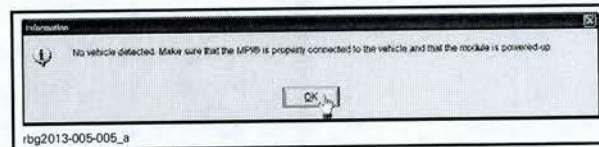


CONFIRM CLEAR FAULTS REQUEST - "YES"

NOTE: To clear all faults, it may be necessary turn the ignition key OFF, wait a few seconds, turn the ignition key back ON and activate the Clear Occurred Faults button once more.

4. Turn ignition key OFF.

5. When the following message appears, turn ignition key to ON and wait until the message vanishes.



6. Click on the Clear Occurred Faults button again and ensure all faults are cleared.

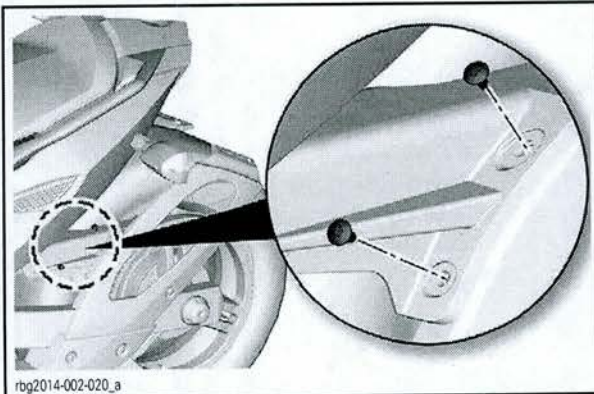
7. Turn ignition key OFF.

NOTICE To avoid potential vehicle damage, it is very important to turn ignition key off BEFORE exiting B.U.D.S. or unplugging the MPI-2 diagnostic cable from the vehicle.

8. Unplug MPI-2 diagnostic cable from vehicle.

C - Replace Upper Belt Guard Retaining Screws

Remove and discard screws on vehicle and replace with new screws.



rbg2014-002-020_a

TIGHTENING TORQUE

Upper belt guard retaining screws

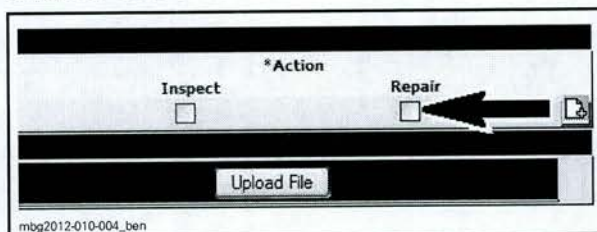
5 N•m ± 7 N•m
(44 lbf•in ± 62 lbf•in)

WARRANTY

Submit a campaign claim using the following information.

For claiming procedure, refer to the *DEALER/DISTRIBUTOR WARRANTY GUIDE*.

Click in the *REPAIR BOX* while completing your claim on BOSSWeb.



mkg2012-010-004_ben

Registered Vehicle

All except Brazil	
Campaign Number	2013-0015
Claim Type	Campaign Claim
Action	Repair
Flat Rate Time	1.4 hour (ST, RT models)
	1.2 hour (RS model)
Expiry Date	January 23, 2017

Brazil	
Campaign Number	2013-0015
Claim Type	Campaign Claim
Action	Repair
Flat Rate Time	1.1 hour (ST, RT models)
	0.9 hour (RS models)
Expiry Date	January 23, 2017

NOTE: Brazil models have a lower flat rate because the ECM update is not to be done.

NOTE: The cost of the liquid tape is included in the campaign claim parts list.

Unregistered Vehicle

All except Brazil	
Campaign Number	2013-0016
Claim Type	Campaign Claim
Action	Repair
Flat Rate Time	0.9 hour (ST, RT models)
	0.7 hour (RS model)
Expiry Date	January 23, 2017

Brazil	
Campaign Number	2013-0016
Claim Type	Campaign Claim
Action	Repair
Flat Rate Time	0.6 hour (ST, RT models)
	0.4 hour (RS model)
Expiry Date	January 23, 2017

NOTE: Vehicles done at PDI have a lower flat rate because the front bin does not need to be removed to access the fuse boxes splices.

NOTE: Brazil models have a lower flat rate because the ECM update is not to be done.

NOTE: The cost of the liquid tape is included in the campaign claim parts list.

SERIAL NUMBER LIST CAMPAIGN 2013-0015

View the VIN list for:

- Your entire fleet of vehicles, visit Campaign Monitoring on BOSSWeb under the Warranty Tab.
- Individual vehicles, the proper campaign will show up on the Infocenter.
- All eligible units, refer to article: 000071226.

SERIAL NUMBER LIST CAMPAIGN 2013-0016

View the VIN list for:

- Your entire fleet of vehicles, visit Campaign Monitoring on BOSSWeb under the Warranty Tab.
- Individual vehicles, the proper campaign will show up on the Infocenter.
- All eligible units, refer to article: 000071227.