



# CHASSIS

**MODEL:** SAF-T-LINER HDX & EFX w/2013 CUMMINS DIESEL ENGINES

**SUBJECT:** UPDATING VEHICLE IDENTIFICATION NUMBER (VIN)

**DATE:** JANUARY 24, 2014

**INDEX:** 20

**PAGE:** 1 OF 2

**BULLETIN:** 47

The VIN may not be properly installed in the ECU on 2013 Cummins Engines.

**REFLASH PROCEDURE:**

1. Turn Ignition off, set parking brake and chock wheels.
2. Connect computer to J-1939 port under dash and start Insite computer program. (If you do not have Insite, take bus to registered Cummins dealer.) **Figure 1** shows what screen will look like.

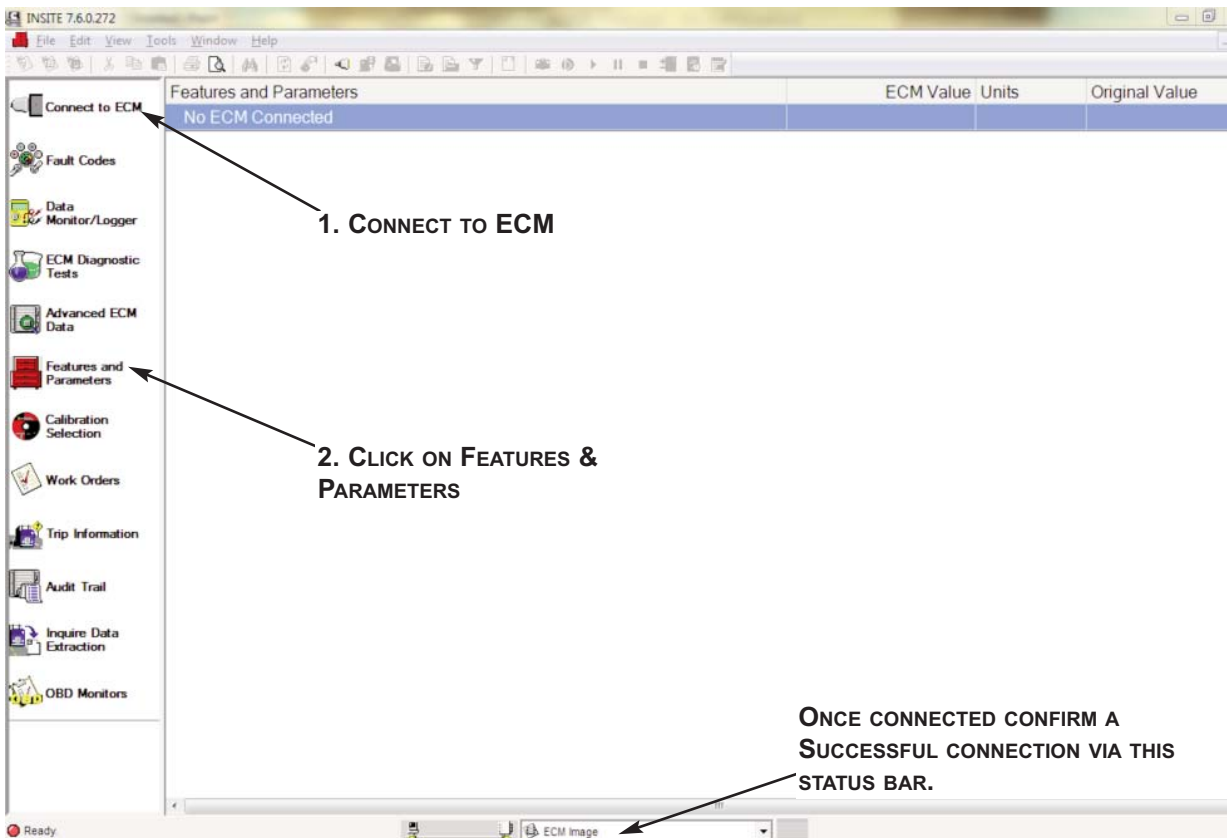


FIGURE 1

3. Your screen should look like **Figure 2** with the engine connected. Locate file tab “Vehicle/OEM Information” and open it up. Next, locate the file “Vehicle Identification number or Equipment Serial number”. In the next column beside this if the VIN is missing, it will be blank. Click in that cell and enter the VIN. Once you click outside of the cell it should prompt you to save the file. If not, click on top on “file” and then click “save”.

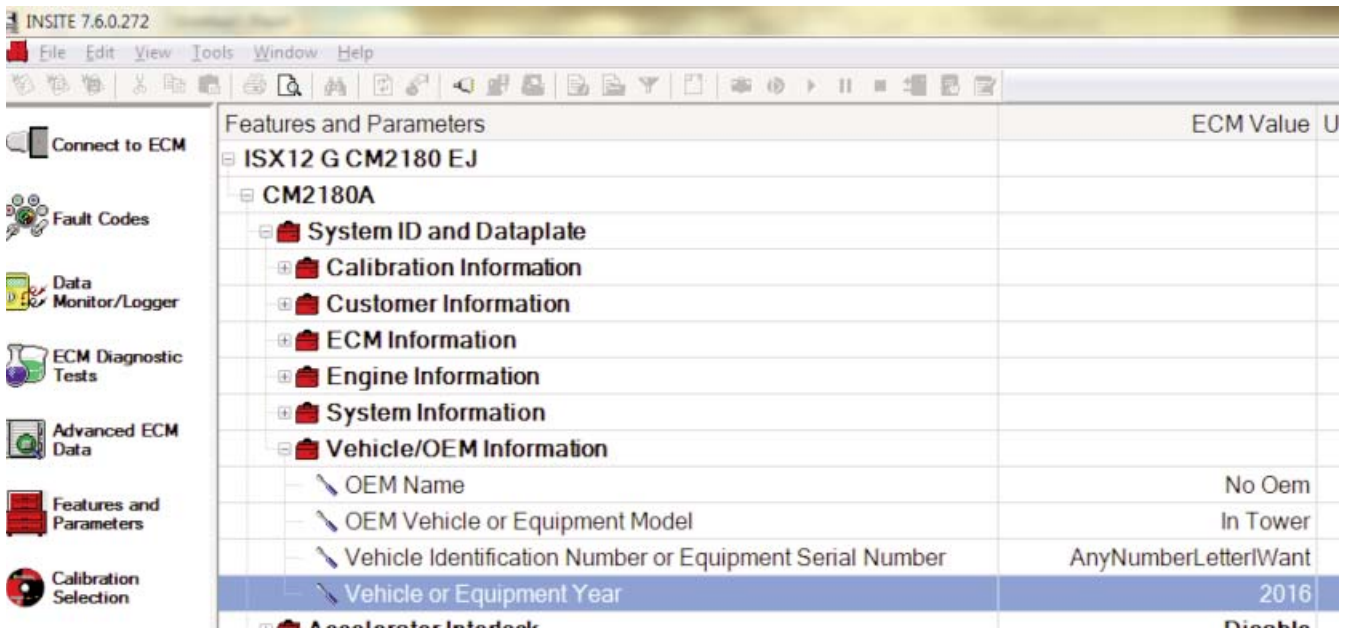


FIGURE 2

4. Disconnect the ECM then reconnect the ECM. Verify that the VIN has been updated. If not repeat the steps again.
5. Un-chock tires.

**WARRANTY:**

NORMAL WARRANTY APPLIES.

SEE TABLE BELOW FOR **OWL VMRS CODES AND LABOR ALLOWANCE INFORMATION**. ENTER THIS **PSB** NUMBER IN THE **CAMPAIGN NUMBER** FIELD.

OWL VMRS CODES AND LABOR ALLOWANCE					
PRIMARY FAILED PART	COMPONENT CODE	CAUSE CODE	SRT CODE	DESCRIPTION	TIME: HOURS
SOFTWARE (THEN SELECT SOFTWARE ENGINE CONTROL UNIT IN DROPDOWN)	045-021-047		N/A	REFLASH VIN TO ECU ON 2013 CUMMINS ENGINE	0.3