



SERVICE BULLETIN

Classification: AT13-014	Reference: NTB13-079	Date: July 31, 2013
-----------------------------	-------------------------	------------------------

2007-2012 ALTIMA; REDUCED PERFORMANCE DUE TO CVT FLUID TEMPERATURE PROTECTION LOGIC

APPLIED VEHICLE: 2007-2012 Altima (L32)

APPLIED ENGINE: 4 Cylinder **only**

IF YOU CONFIRM

The maximum vehicle speed is, or was, reduced by the CVT fail-safe logic after continuous operation under the following conditions:

- High RPM and/or high speed driving
(RPM of 4000+ or speeds of 65 mph (104.6 km/h) for 1.0 – 1.5 hrs or more)
- Driving in ambient temperature of 96 degrees or higher
- Climbing steep or extended hills for 6 miles (9.6 km) or more
- Whine or rattle type noise occurring during reduced engine performance (vehicle speed decrease)

ACTION

1. Perform a self diagnosis with CONSULT-III plus (C-III plus).
 - If DTCs are present, refer to the appropriate section of the Electronic Service Manual (ESM) and diagnose the DTCs first before proceeding to step 2 of **ACTION**.
2. Check the number of counts of "CVT-A" and "CVT-B" with C-III plus.
 - Refer to the Flow Chart on page 3 and the Service Procedure starting on page 4 to confirm if this bulletin applies.

IMPORTANT: The purpose of "ACTION" (above) is to give you a quick idea of the work you will be performing. You **MUST** closely follow the entire Service Procedure as it contains information that is essential to successfully completing the repair.

Nissan Bulletins are intended for use by qualified technicians, not 'do-it-yourselfers'. Qualified technicians are properly trained individuals who have the equipment, tools, safety instruction, and know-how to do a job properly and safely. NOTE: If you believe that a described condition may apply to a particular vehicle, **DO NOT** assume that it does. See your Nissan dealer to determine if this applies to your vehicle.

PARTS INFORMATION

DESCRIPTION	PART #	QUANTITY
SERVICE KIT-COOLER ASSY	21606-ZX59A	1*
NS-2 CVT Fluid	999MP-NS200P	(1)

* Due to the limited supply, Part Number 21606-ZX59A will be on restriction for several weeks after the publication date of the bulletin. If 21606-ZX59A is needed during the restriction period, use the Parts Form attached to the last page of this bulletin.

(1) As needed.

NS-2 CVT Fluid can be ordered from the Maintenance Advantage website that can be accessed through www.nnanet.com (**NNANET.COM, Parts & Service, Maintenance Advantage-Tire/Wiper/Battery/Chemical**).

CLAIMS INFORMATION

Submit a Primary Part (PP) type line claim using the following claims coding:

DESCRIPTION	PFP	OP CODE	SYM	DIA	FRT
Oil cooler kit installation	21606-ZX59A	JX15AA	AE	32	0.8

Table A

PART NAME	QTY PER KIT
COOLER ASSY-AUTO TRANS	1
HOSE-AUTO TRANS, UPR	1
HOSE-AUTO TRANS, LWR	1
CLP - HOSE SPR PLATE	4
BOLT-HEX	3
NUT-HEX	3

Flow Chart

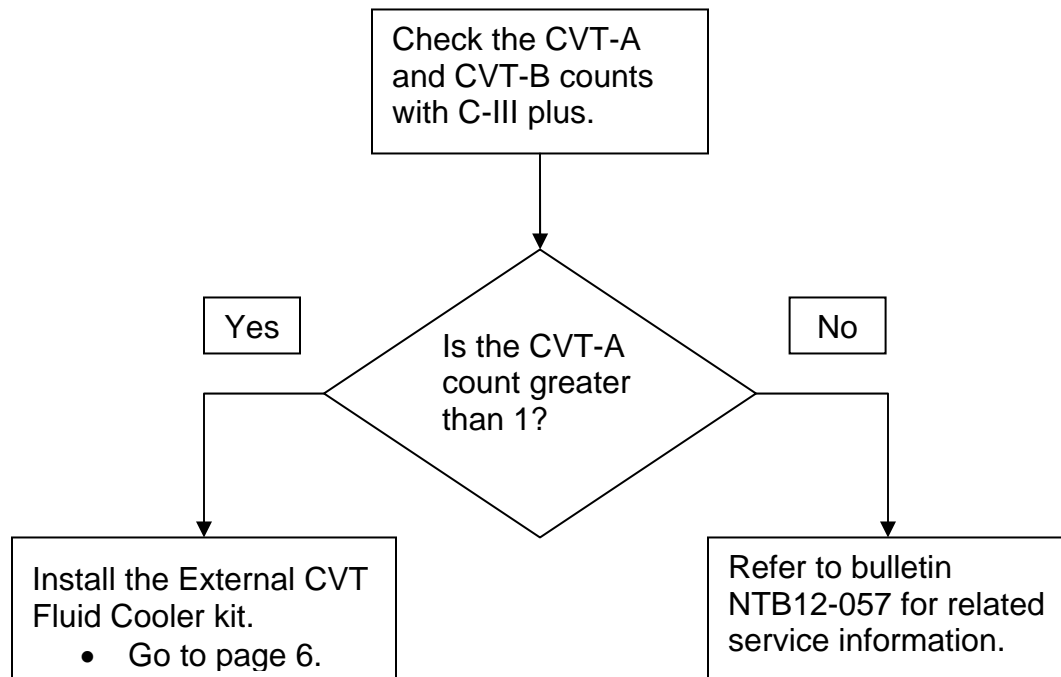
Important

Before applying this bulletin:

- Confirm that the CVT fluid has not been overfilled and/or that a non-approved CVT fluid has been added.
- Confirm that the coolant concentration is not greater than 50%.
 - CVT fluid that is overfilled or non-approved, or coolant concentrations greater than 50% can cause the symptoms in the IF YOU CONFIRM section on page 1.

Refer to NTB12-057 to resolve these conditions first if they should occur.

NOTE: Refer to the ESM for the correct CVT fluid and coolant type for the model and year vehicle that is being worked on.



NOTE: If the CVT-A count is not greater than 1 and similar symptoms to those in IF YOU CONFIRM and/or a DTC are present, refer to the Electronic Service Manual (ESM) and NTB12-057 for further diagnosis.

SERVICE PROCEDURE

Check CVT-A and CVT-B count with C-III plus

1. Open C-III plus and select **Diagnosis (One System)**.

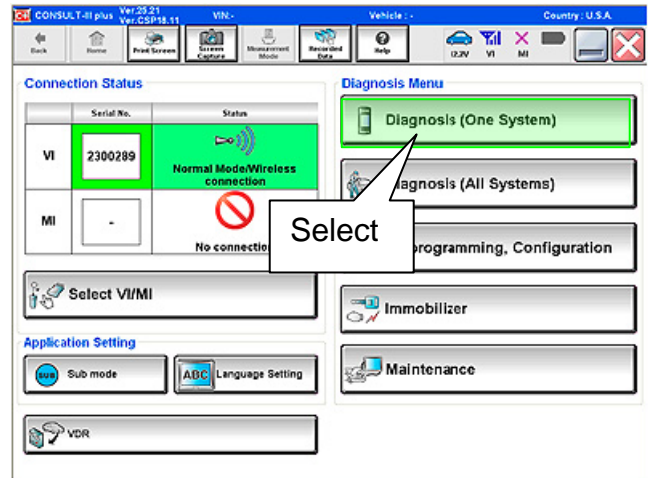


Figure 1

2. Select **TRANSMISSION**.

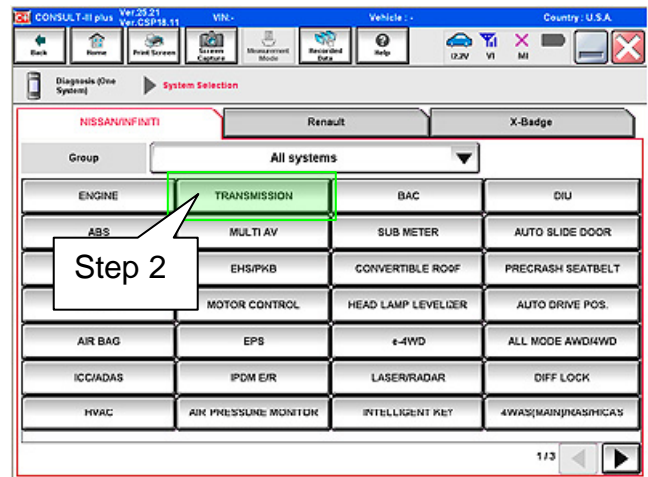


Figure 2

3. In **Data Monitor** select **CVT –A** and **CVT-B** and then select **START**.

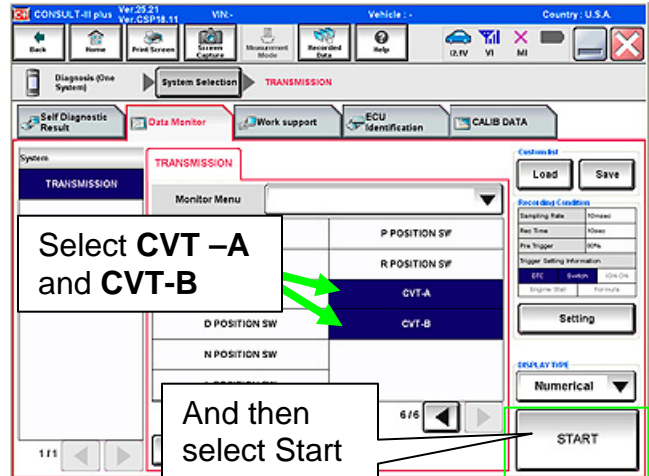


Figure 3

4. Check both **CVT –A** and **CVT-B** counts and refer to the Flow Chart on page 3 to confirm if this bulletin applies.
 - Print this page and attach it to the work order.

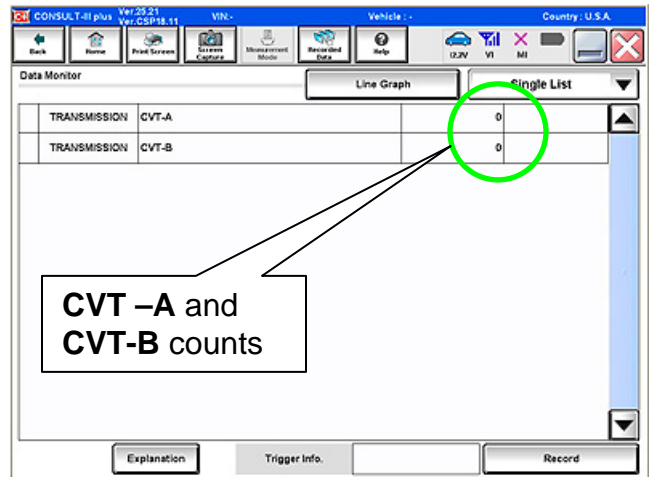


Figure 4

NOTE: If the CVT-A count is not greater than 1 and similar symptoms to those in IF YOU CONFIRM and/or a DTC are present, refer to the ESM and NTB12-057 for further diagnosis.

Install External oil cooler kit

1. Place the vehicle on a lift and raise as needed to perform the following procedure.
2. Attach the COOLER ASSY-AUTO TRANS to the radiator support ahead of the radiator/condenser:
 - a. Insert 3 bolts (Figure 1 and Figure 2) from the kit through the composite radiator support from the engine compartment side.
 - These holes are pre-existing.
 - b. Install the COOLER ASSY-AUTO TRANS onto bolts.
 - c. Thread on the nuts and torque to 9.8 N·m (1.0 kg·m, 87 in-lb).

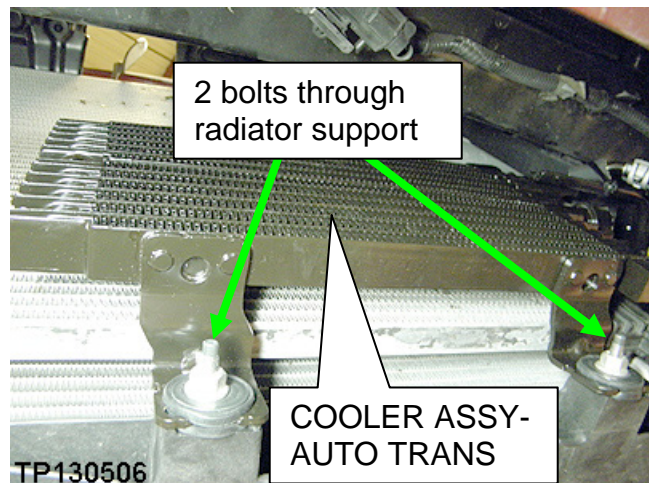


Figure 1

NOTE: Figure 1 is a view of the front of the radiator/condenser, taken from the bottom looking up.

3. Route both hoses through the radiator support shown in Figure 2.
4. Slide 1 “CLP - HOSE SPR PLATE” (spring clamp) onto each hose.
5. Attach both of the hoses to the COOLER ASSY-AUTO TRANS.
 - See Figure 4 and Figure 5 on page 7 for correct hose routing.
 - Do not release the CLP - HOSE SPR PLATE(s) yet, until the hoses are attached at their other ends.
6. Remove the upper radiator to CVT fluid hose from both the radiator and the CVT and discard this hose and its CLP - HOSE SPR PLATE(s).
7. Clean both radiator and CVT fittings with brake cleaner.

NOTE: Use genuine Nissan Brake Cleaner or equivalent.
8. Attach the new hose from the COOLER ASSY-AUTO TRANS to the upper radiator CVT fluid fitting.

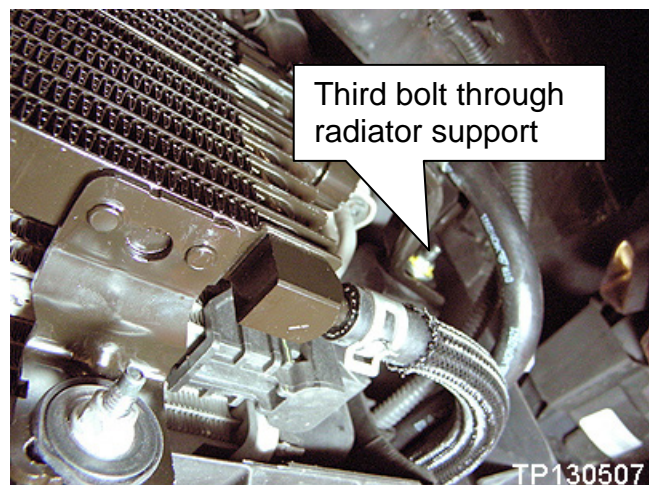


Figure 2

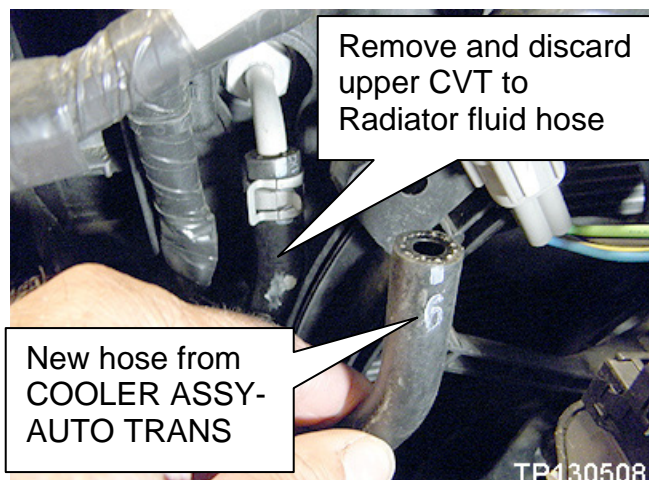


Figure 3

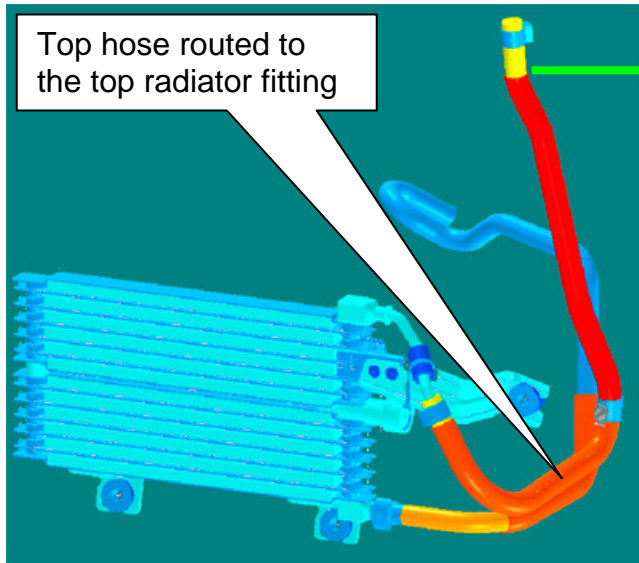


Figure 4

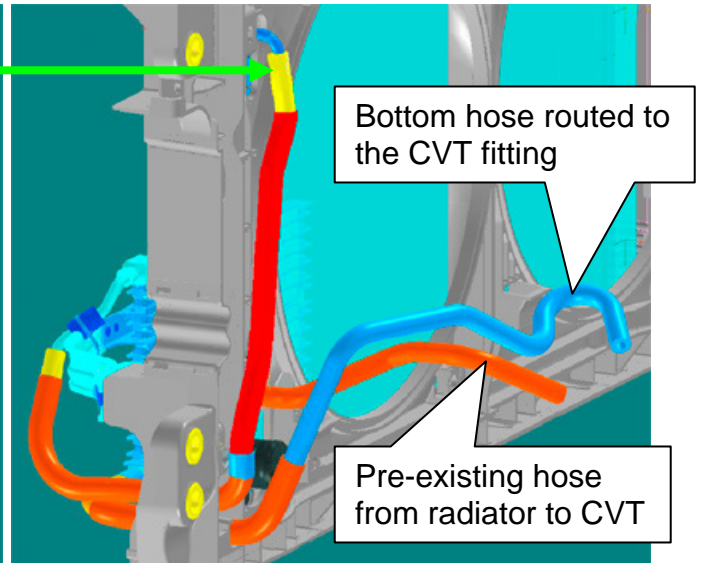


Figure 5

Figure 4 and Figure 5 show hose routing from the COOLER ASSY-AUTO TRANS (external CVT cooler) to the radiator and the CVT.

9. Attach the second COOLER ASSY-AUTO TRANS fluid hose to the CVT (Figure 5).
10. Position and release all 4 of the CLP - HOSE SPR PLATE(s) (spring clamps).
 - Position the CLP - HOSE SPR PLATE as close to each fitting bulge as possible and then release them.

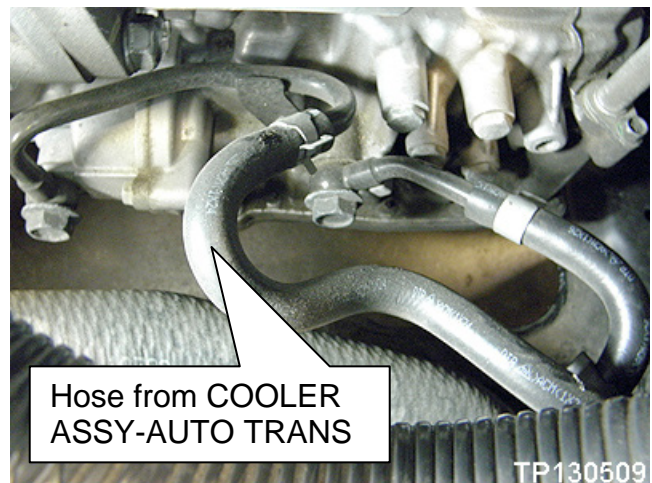


Figure 6

NOTE: Confirm that the CLP - HOSE SPR PLATE(s) are not on top of the fitting bulge or on an angle.

11. Check the level of the CVT NS-2 Fluid and add as needed.

CVT PARTS ORDER FORM

For:

2007-2012 Altima; Reduced Performance Due To CVT Fluid Protection Logic (NTB13-079)

INCOMPLETE ORDER FORMS WILL NOT BE PROCESSED

Dealer Code: _____ Order Date: _____

Dealership Email Address: _____

VIN Number: _____

- PDC:
- | | |
|--|---|
| <input type="checkbox"/> Sacramento PDC | <input type="checkbox"/> Orlando PDC |
| <input type="checkbox"/> Los Angeles PDC | <input type="checkbox"/> Chicago PDC |
| <input type="checkbox"/> Dallas PDC | <input type="checkbox"/> Greenville PDC |
| <input type="checkbox"/> Baltimore PDC | <input type="checkbox"/> Memphis – Olive Branch PDC |
| <input type="checkbox"/> New York PDC | |

DESCRIPTION	PART #	QUANTITY
SERVICE KIT-COOLER ASSY	21606-ZX59A	1

Email the completed form to:

campaign.parts@nissan-usa.com

NOTE: This bulletin and Service Procedure is not a campaign. For convenience, the above email address is being used to fulfill and expedite this part request.

The electronic version of the part order form is available on NNA.net under My Documents in the Parts/Bulletins and Parts/Forms categories.