

**SB-10043570-4751**

<b>Countries:</b>	CANADA, COLOMBIA, UNITED STATES, MEXICO, PUERTO RICO	<b>Document ID:</b>	IK0800348
<b>Availability:</b>	ISIS, Bus ISIS, FleetISIS, Body Builder	<b>Revision:</b>	3
<b>Major System:</b>	ELECTRICAL SYSTEM	<b>Created:</b>	2/27/2012
<b>Current Language:</b>	English	<b>Last Modified:</b>	8/14/2014
<b>Other Languages:</b>	NONE	<b>Author:</b>	Al Schnellenger
<b>Viewed:</b>	1637		

[Less Info](#)

Hide Details

Coding Information

<b>Copy Link</b> 	<b>Copy Relative Link</b> 	<b>Bookmark</b>  <a href="#">View My Bookmarks</a>	<b>Add to Favorites</b> 	<b>Print</b> 	<b>Provide Feedback</b> 	<b>Helpful</b>  130	<b>Not Helpful</b>  84
----------------------	-------------------------------	--	-----------------------------	------------------	-----------------------------	---------------------------	------------------------------

**Title:** Combined or Separate, Turn and Stop Lights

**Applies To:** TerraStar, DuraStar, WorkStar, TransStar

**CHANGE LOG**

**NOTE: DO NOT delete this Change Log. If this iKnow Article is being revised, please type in the text box below what has changed in the article. The change log is meant for Dealers to be able to see what has updated/changed in the article.**

Dealers: Please refer to the change log text box below for recent changes to this article:

8/14/2014 - Updated link to Body Builder Electrical Manual  
8/06/2014 - Author updated for feedback purposes

**DESCRIPTION**

Changing Truck or Trailer Lighting, Between Combined or Separate, Stop and Turn

**RESOLUTION**

Tail lights, on the International Trucks, come standard, with Combined, Rear, Stop and Turn Signals.

The Front Turn signals are always turn only.

Feature codes are available to provide circuits for Combined or Separate, Stop and Turn Signals.

Vehicles that were not ordered, or ordered incorrectly, with these features, but require reconfiguration to Combined or Separate Stop and Turn Signals, will have to be modified to add the circuits and/or relays, as identified in the following diagrams.

For turn signals, the key is selecting the correct circuits used to energize the Left and Right Trailer Turn Relays.

Combined turns and stop, basically use the Rear Turn Signal, voltages.

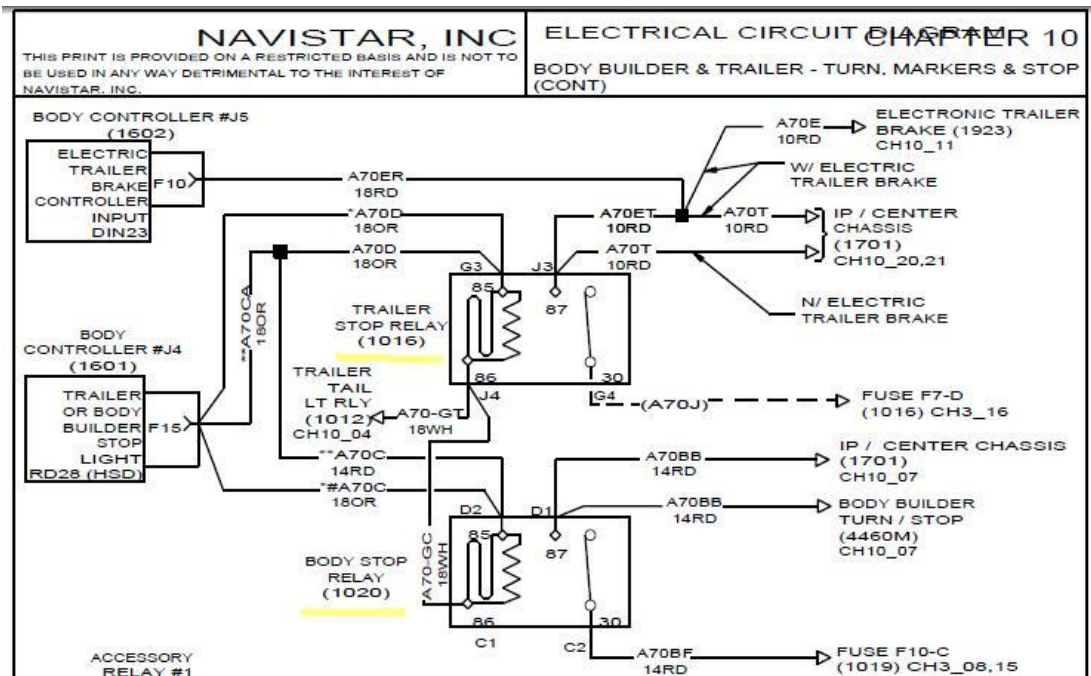
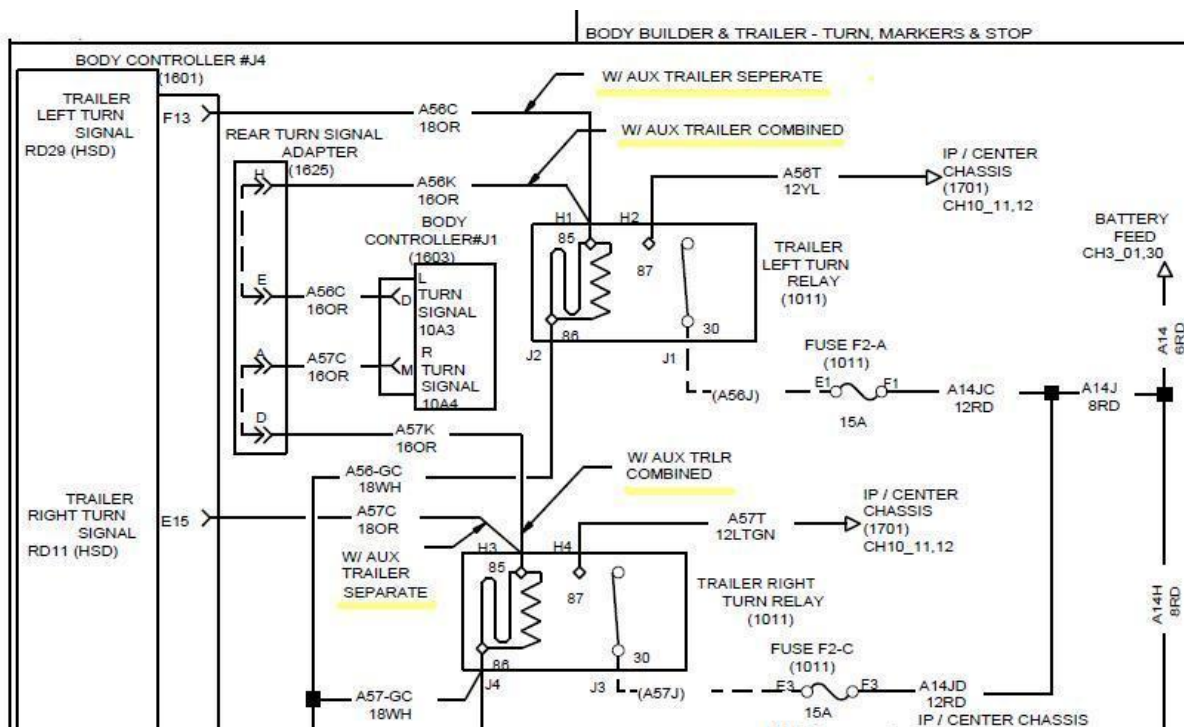
Separate turns use the Front Turn Signal voltages.

For stop signals, the key is connecting circuits to energize the Trailer Stop Relay or the Body Stop Relay.

If programmed correctly, Connector 1601 pin F15 will provide a ground relay driver to power the Stop Relay and provide a separate Stop Signal.

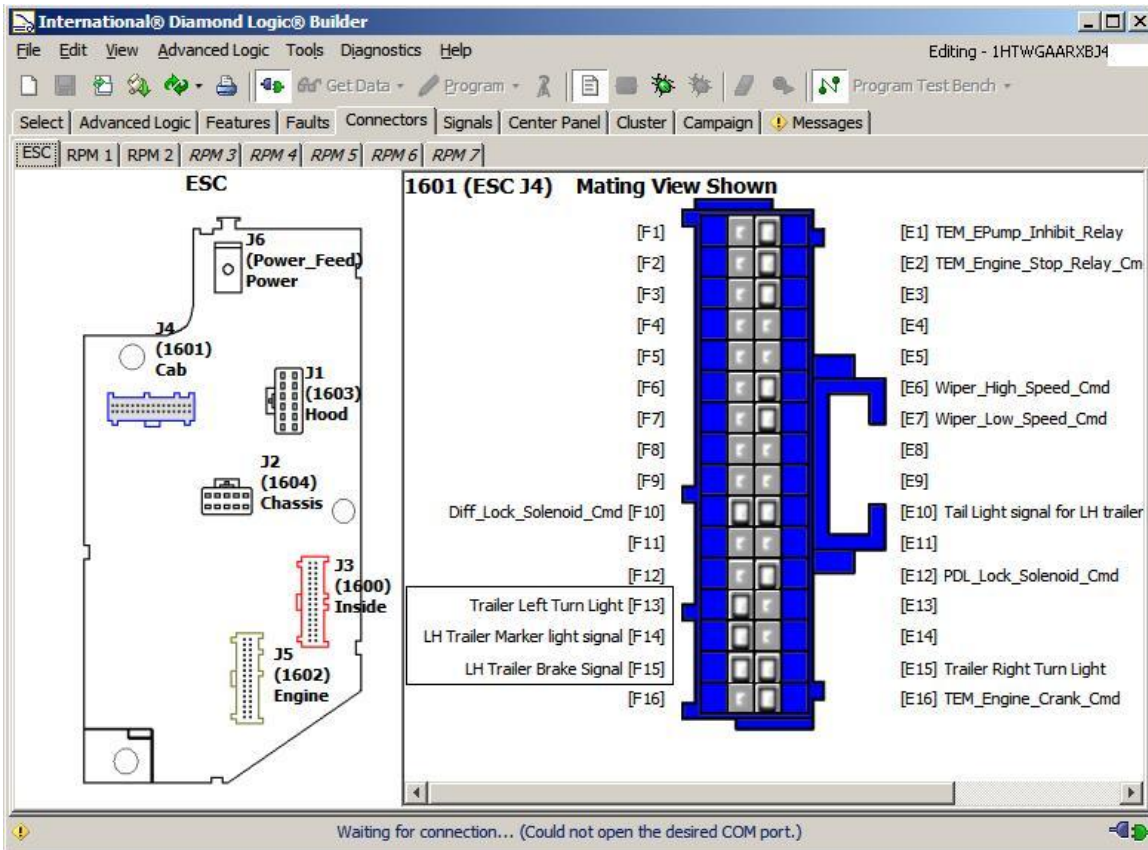
**CIRCUIT DIAGRAMS**

**Note:** This is a corrected drawing. The drawing in the circuit diagram may have the combined and separate signals reversed.



**DLB PIN OUTS**

The output on 1601 pin F15, F13 and E15 are only populated, when the 595ABC Trailer Lighting feature is programmed on.



**OTHER RESOURCES**

The Body Builder Resource Center has information, on the Stop/Turn/Tail feature codes and wire locations. [Click Here](#)

Hide Details

Feedback Information

Viewed: 1636  
 Helpful: 130  
 Not Helpful: 84

No Feedback Found