



Service Bulletin

File in Section: -

Bulletin No.: PI0655A

Date: December, 2014

PRELIMINARY INFORMATION

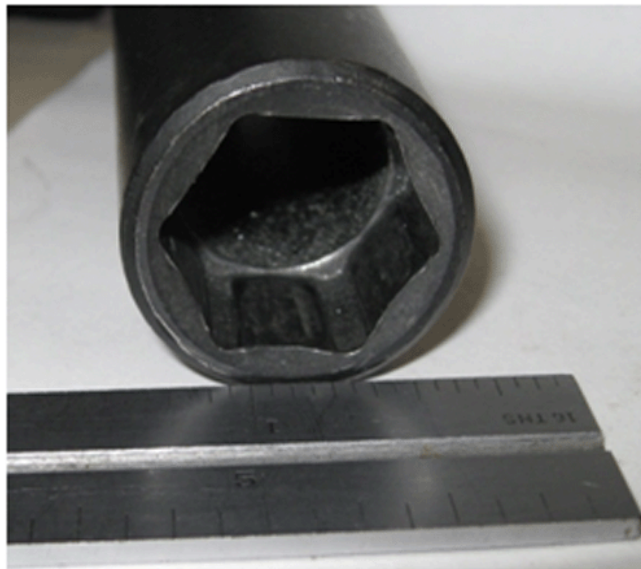
Subject: Information on Removal/Cracking of Stainless Steel Wheel Nut Caps

Models: 2015 and Prior GM Passenger Cars and Trucks

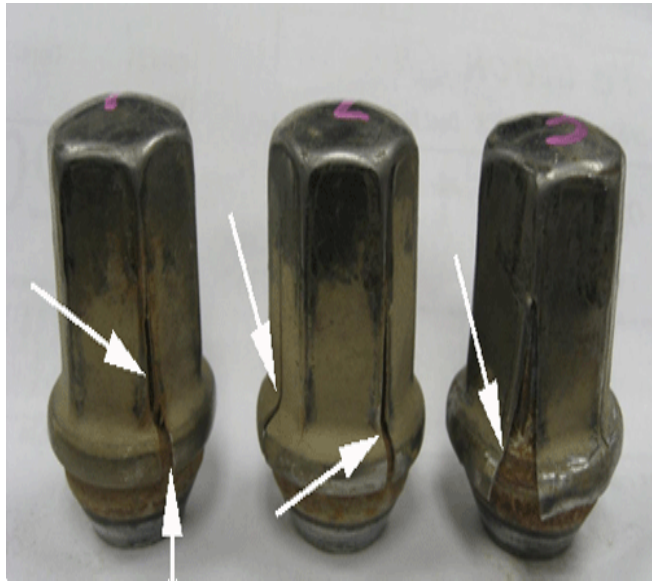
Attention: This PI also applies to any of the above models that may be Export Vehicles.

This PI has been revised to add the 2013-2015 Model Years. Please discard PI0655.

Condition/Concern



2753995



2753997



2754010



2754004

When removing wheel nuts with stainless steel caps, using a shallow socket may crack the cap causing corrosion underneath the cap and nut.

Recommendation/Instructions

Use a socket with depth that covers the complete surface area of the wheel nut and follow Service Information (SI) for correct wheel nut torque specifications.