

Technical Bulletin

Model(s)	Year	Eng. Code	Trans. Code	VIN Range From	VIN Range To
Jetta Hybrid	2013 - 2014	1.4L (CNLA)	All	All	All

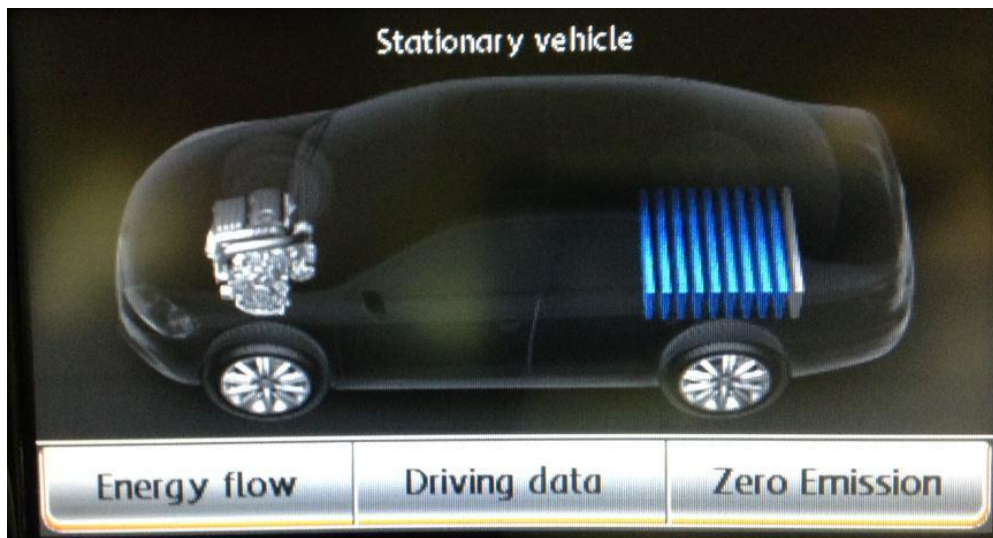
Condition

91 14 12 October 16, 2014 **2038293** Supersedes Technical Bulletin V911408 dated September 17, 2014 to include a special revision number in the HST field of the warranty table to assist in warranty claiming.

Stationary Vehicle Displayed While in Motion (Premium 8 Radio)

The customer may report that while the vehicle is in motion, the display on the Premium 8 radio displays the "Stationary Vehicle" driving mode. This symptom is often intermittent and can be temporarily resolved by performing a key cycle.

This condition only affects vehicles equipped with Premium 8 radio.



Note:

This technical bulletin must be read in its entirety before attempting the software update.

Technical Bulletin

Technical Background

This procedure corrects the concern specified above by updating the Premium 8 Radio software to the latest level **0011**.

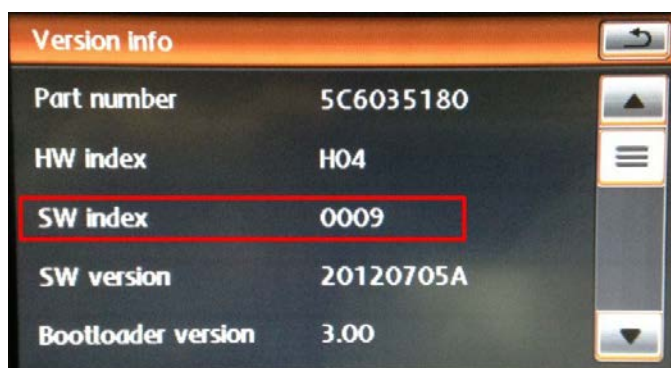
Production Solution

SW 0011 implemented into production in CW 37/14.

Service

Software Update Procedure

- Connect a Volkswagen approved battery charger/maintainer to the vehicle's 12 volt battery.
- Switch the ignition to the ON position.
- Switch on the Premium 8 radio.
- Check the Software Version by pressing and holding the "Setup" button for 10 seconds to enter Radio Service Mode.
- Select "Version Info".



- If the current SW – Version is lower than **0011**, proceed with this technical bulletin.
- If the current SW – Version is at or above **0011**, this work procedure does not apply.

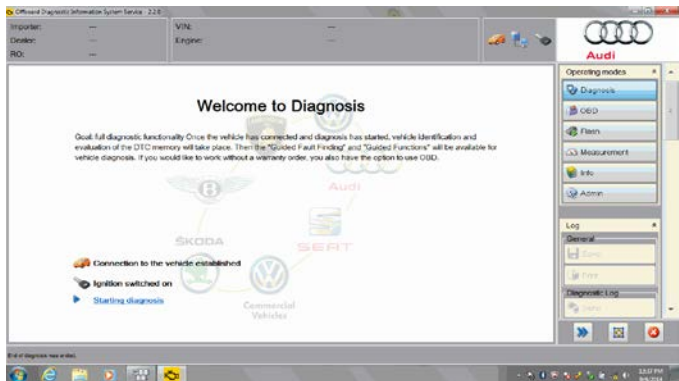
- Connect the diagnostic tester to the vehicle's DLC (Data Link Connector).

Technical Bulletin

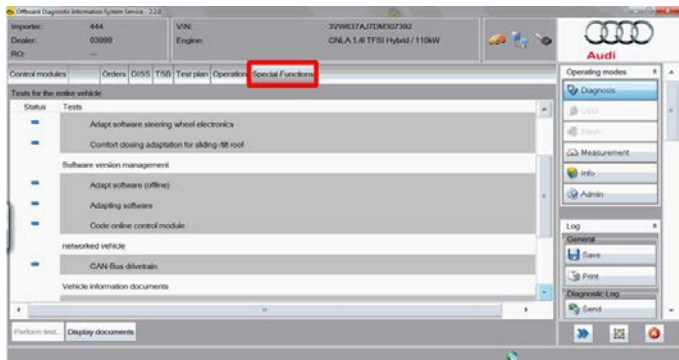
Note:

Prior to launching ODIS application and starting this procedure, confirm tester screen saver and power settings in accordance with Special Tools and Equipment - Service Information Circular # VSE-08-18. Failure to do so may result in the tester entering power save mode during data transfer, and subsequent control module failure.

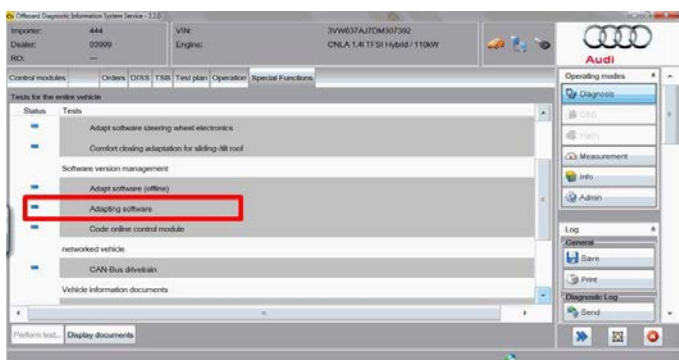
When using a VAS 6150/x & VAS 6160/X tester in conjunction with a VAS 5054A wireless transmitter head for a flash procedure, please connect a USB cable between the transmitter head and the tester. Failure to do so may lead to errors during the flash procedure.



- Launch the ODIS application.
- Begin Guided Fault Finding by clicking on “Starting Diagnosis”.
- Allow Guided Fault Finding to complete interrogation of the vehicle’s control modules.

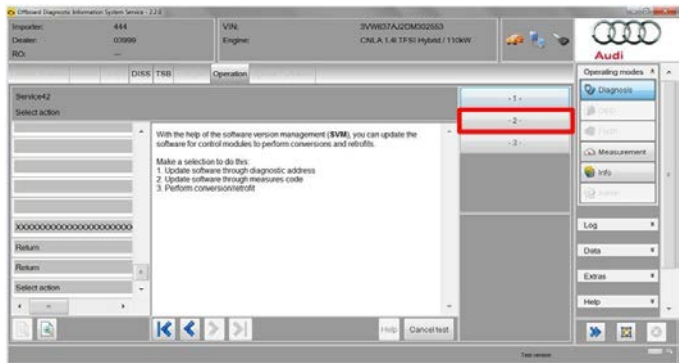


- Once the GFF interrogation of the control modules has been completed, click on the “Special Functions” tab.

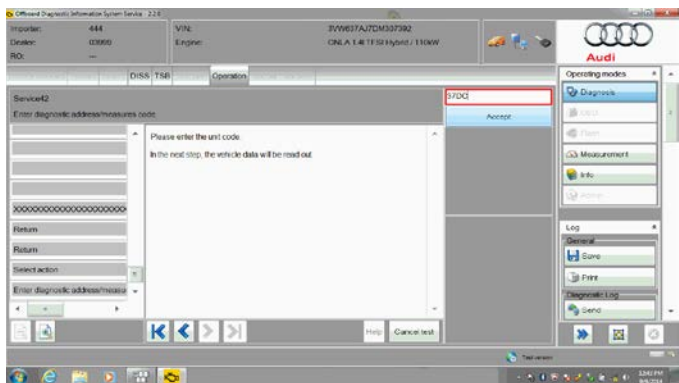


- Click on “Adapting Software”.

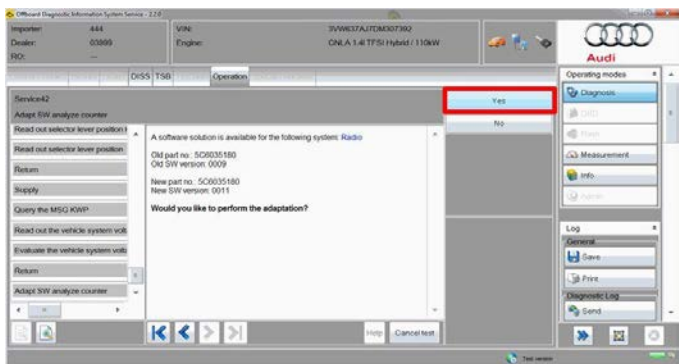
Technical Bulletin



- Select option 2: “Update software through measures code”.

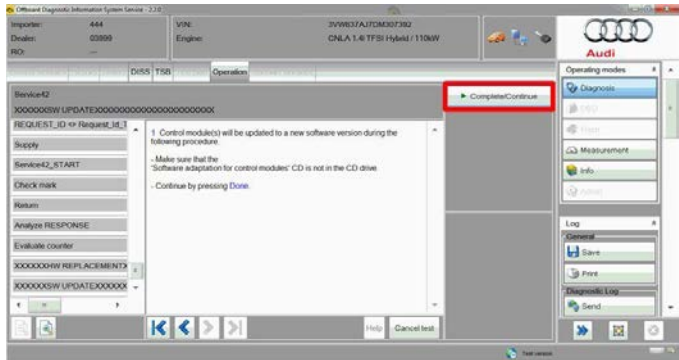


- Enter SVM Code **37DC**.
- Click “Accept”.

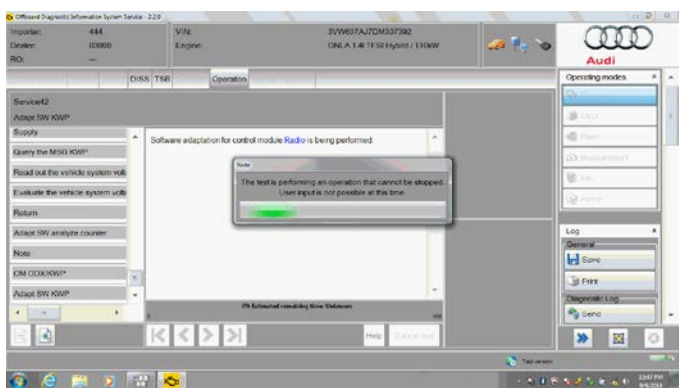


- Click “Yes”.

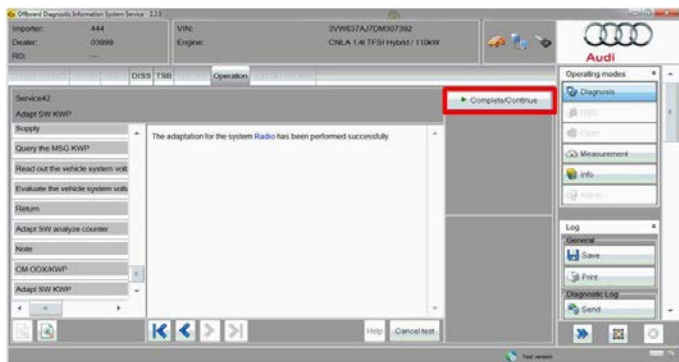
Technical Bulletin



- Enter Geko ID when prompted.
- Click “Complete/Continue”.



- The software update will now take place.
- Allow the update to complete.



- Once the software update has finished, click “Complete/Continue”.



Technical Bulletin

Warranty

Note:

HST Instance number 2038293/2 MUST be entered into the HST field for claiming purposes.

To determine if this procedure is covered under Warranty, always refer to the Warranty Policies and Procedures Manual ¹⁾					
Model(s)	Year(s)	Eng. Code(s)	Trans. Code(s)	VIN Range From	VIN Range To
Jetta Hybrid	2013 – 2014	1.4L (CNLA)	All	All	All
SAGA Coding					
Claim Type:		Use applicable Claim Type ¹⁾			
Service Number:	Damage Code	HST		Damage Location (Depends on Service No.)	
9130	0202	2038293/2		Use applicable when indicated in ElsaWeb (L/R)	
Manufacturer:		Jetta Hybrid		3ME ²⁾	
Labor Operation ³⁾: Update Software			See GFF time expenditure		
Causal Part: Select labor operation			01500000		
Diagnostic Time ⁴⁾					
GFF Time expenditure	01500000 = actual time 260 TU max.			YES	
Road Test	01210002 = 00 TU 01210004 = 00 TU			NO	
Technical Diagnosis	01320000 = 00 TU max.			NO	



Technical Bulletin

Claim Comment: Input "As per Technical Bulletin 2038293" in comment section of Warranty Claim.

- ¹⁾ Vehicle may be outside any Warranty in which case this Technical Bulletin is informational only**
- ²⁾ Code per warranty vendor code policy.**
- ³⁾ Labor Time Units (TUs) are subject to change with ELSA updates.**
- ⁴⁾ Documentation required per Warranty Policies and Procedures Manual.**

Required Parts and Tools

No Special Parts required.

Tool Description	Tool No:
Midtronics Battery Tester/Charger	InCharge 940 (INC-940) or GRX3000VAS
VAS Diagnostic Tool	VAS 6150/X & VAS 6160/X with: ODIS Service 2.0.0 or higher with current online updates

Additional Information

All part and service references provided in this Technical Bulletin are subject to change and/or removal. Always check with your Parts Dept. and Repair Manuals for the latest information.