



Service Bulletin

File in Section: -

Bulletin No.: PIT5278

Date: May, 2014

PRELIMINARY INFORMATION

Subject: Power Liftgate Erratic Operation Will Not Power Close DTC B153A And/Or Motor Running But Does Not Move

Models: 2015 Cadillac Escalade Models
2015 Chevrolet Tahoe, Suburban
2015 GMC Yukon Models

The following diagnosis might be helpful if the vehicle exhibits the symptom(s) described in this PI.

Condition/Concern

Some owners may comment of any of the following issues:

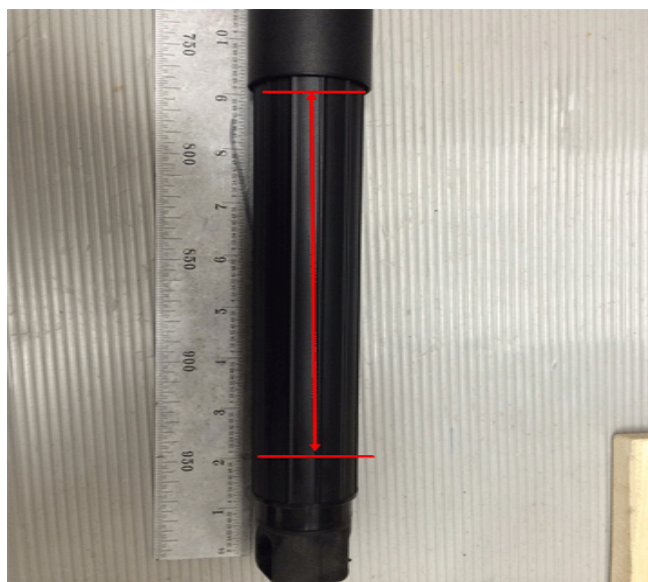
- Erratic operation of the power liftgate
- Power liftgate hesitates during opening or closing, or does not go to the fully open or closed position
- When power closing the liftgate you can hear the motor running in the left strut but the liftgate is not closing
- DTC B153A set in the Power Liftgate Module (usually combined with other erratic behavior of the power liftgate)

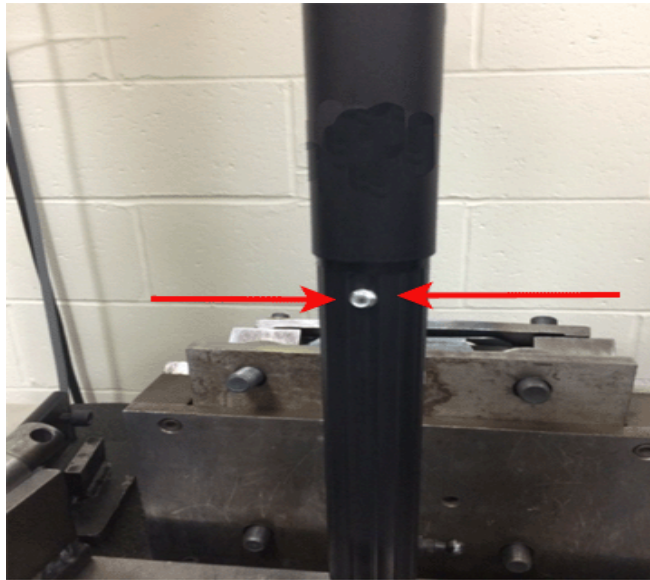
Recommendation/Instructions

These concerns may occur if the left liftgate strut/motor actuator is internally coming apart. It will need to be replaced, HOWEVER, care must be taken when removing the left liftgate strut/motor actuator from the vehicle. There is an assist spring inside the strut. If the internal portion of the strut has completely separated, and if it is removed from the vehicle without following the procedure listed below, the end of the strut can become a projectile.

Note: If you suspect the left strut/actuator has this condition, DO NOT remove the right strut until the left strut is replaced per the procedure below.

1. Obtain two #8 self tapping screws $\frac{3}{4}$ inches long.
2. Fully open the liftgate.
3. Install the two self tapping screws 180° apart, any place between 2 and 9 inches from the bottom of the left strut, as shown below.





3818605



3818610

Note: The screws will hold the strut together for removal.

4. Remove the left liftgate strut/motor actuator following the Liftgate Power Assist Actuator Replacement procedure in SI.

Important: After the left liftgate strut/motor actuator is removed, DO NOT remove the screws. The part will be requested back to the Warranty Parts Center once the associated warranty claim has paid.

Parts Information

excel sheet

Warranty Information

For vehicles repaired under warranty use:

Labor Operation	Description	Labor Time
2064850	Liftgate Power Assist Actuator Replacement	Use Published Labor Operation Time

Please follow this diagnostic or repair process thoroughly and complete each step. If the condition exhibited is resolved without completing every step, the remaining steps do not need to be performed.