

A PDF of this newsletter and previous ones can be found by logging in to ServiceNet and clicking on the [Elsa Newsletter](#) section in the Technician References menu.

VW Elsa Newsletter



Edition 89: June 9, 2014

Content

- [ElsaPro Software Update](#)
- [Technical Bulletins](#)
- [Pending Service Solutions](#)
- [Tech Tips](#)
- [Campaigns](#)
- [Updates](#)
- [Suggestions](#)



ElsaPro Software Update

The ElsaPro system application was updated on June 1. This update brought a couple changes that you should see and that will help improve the product for your use:

New: VIN column in Job Results List

When looking up existing jobs, a column for the VIN has been added to more easily identify the vehicle.

Job number	Repair order	VIN	Model Code	Open campaigns/actions
571		WAUJKBFXDA006817	4235NT	NO
573		1VWBN7A35CC036648	A322R1	YES
667		1VWBN7A3XDC029874	5H21V4	YES
672		WVWDM7AJ8CV192551	5K129M	NO
674		WVWGU8AN9AE533616	3572UQ	NO
678		3VWJ77AT8DM59316	5C13S3	NO
681		WAUCVAFD68N011070	4H25AA	NO
683		WVGBV7AX38V521823	5N17V3	NO
685		WV2NB47073H001750	7DCMA3	NO
728			1J6	
730			9M2	
736		3VWDX7AJ08M331347	162WS3	NO
740		3VWDX7AJ08M331347	162WS3	NO

Fixed: Technical Bulleting Search

The issue of “No results found” when searching for specific Technical Bulletin (TB) instance numbers or key words has been fixed. Users should now have no issue finding a particular TB applicable for a specific vehicle using the Search function.

[Back to top](#)

Technical Bulletins

00 14 05 - 2036935 By-Pack At Delivery					
Components may be missing from the by-pack at delivery.					
Model(s)	Year	Eng. Code	Trans. Code	VIN Range From	VIN Range To
Golf A7	2015	All	All	All	All
Components may be missing from the by-pack at delivery. Production Solution: Not applicable.					

92 14 02 - 2037322 Washer Level Sensor					
Model(s)	Year	Eng. Code	Trans. Code	VIN Range From	VIN Range To
All except Routan	2011–2014	All	All	All	All
The issue is caused by the outside influence of non-approved formulated washer fluids. Non-approved washer fluids leave a clear film coating on the sensor probes, insulating the probes so they cannot read the fluid level. Production Solution: Not applicable.					

94 14 03 · 2011521 Supersedes T. B. V941402 dated March 06, 2014 to update model year applicability, including the 2015 Golf /GTI (A7).

Exterior Lights, Moisture Accumulation

Model(s)	Year	Eng. Code	Trans. Code	VIN Range From	VIN Range To
All VW Models Including 2015 Golf/GTI (A7) (except Routan)	1996–2015	All	All	All	All

Condensation and or water droplets visible on inside of exterior light lenses.

Production Solution: No Production Change required.

Pending Service Solutions

No new Pending Service Solutions this week.

[Back to top](#)

Tech Tips

26-11-03 AdBlue light on with Tank Full

June 6, 2014: Update to information.

Model(s)	Year	Eng.Code	Trans.Code
Touareg	2009–2010	All	All

For concerns of the AdBlue light illuminated in the cluster but, the tank is full, check the adaptation in channel 80 as follows:

Go to Engine Electronics, Control Module OBD, adaptation.

1. Select channel 80, enter 0001, press enter, send test value, apply. If error pops up, press ok, then select channel and values should now change and will read 0004 after it is successfully entered.
2. MVB 174 field 1 should read 100 after the change with the tank full. If adaptation in channel 80 already reads 0004:

DO NOT replace the AdBlue tank.

- Remove fuse S14 (located in ECM cowling).
- Cycle key "ON" to set faults, cycle the key "OFF", remove the key, re-install the S14 fuse.
- Re-check adaptation. It should revert back to a 3.
- Re-code adaptation channel 80 by entering 0001. It should then

read 0004.

- o Cycle ignition switch "OFF" and then "ON", verify AdBlue tank warning has turned off. Confirm latest software in the ECM.

If light still will not reset after performing procedure above, perform the following:

- 1. Remove fuse S14 (located in ECM cowling)**
- 2. Cycle key "ON" to set faults, cycle the key "OFF", remove the key, re-install the S14 fuse.**
- 3. Re-check adaptation. It should revert back to a 3.**
- 3. Re-code adaptation channel 80 by entering 0003.**
- 4. Cycle ignition switch "OFF" and then "ON". Verify AdBlue tank warning has turned off.**

**44-13-04 Steering Wheel Off Center
June 6, 2014: Update to Information**

Model(s)	Year	Eng.Code	Trans.Code
Jetta/Sportwagen, Golf/GTI, Passat/CC, Tiguan, Touareg, Routan	2012–2014	All	All

This Tech Tip was established to explain the influence the adjustable steering column tilt position has on the steering wheel being off center and to provide information on checking for steering wheel off center. Influence of the Steering Column Tilt Position

Due to the design of the adjustable steering column, a level steering wheel can vary up to 2.4 degrees in total from the level position depending on the tilt adjustment of the steering column. In the full up steering column tilt position, the steering wheel is set approximately 1.2 degrees off center to the right and accordingly, 1.2 degrees to the left in the full down tilt position. When the steering column is in the center tilt position the steering wheel is level.

When checking if the steering wheel is level (centered), make sure that the steering column adjustment is in the center tilt position.

If the steering wheel is off center when the steering column is in the center tilt position, perform vehicle four wheel alignment to correct the steering wheel level position. See Tech Tip 2035779 (TT44-13-03) – Four Wheel Alignments.

Note: DO NOT remove the steering wheel from the steering column to correct wheel off center.

50-14-01 Tire dressing for vehicle detailing

Model(s)	Year	Eng.Code	Trans.Code
All Vehicles	2000–2014	All	All

The use of tire dressing gives your tires that shiny finish that completes the image of a clean (new) vehicle. There are many different tire dressing products available. When choosing a product please pay close attention to its contents. Always use a water based product

Note: The use of non-water based products will increase the risk of causing damage to painted surfaces.

One of the recommended products is the water based 3M™ Engine and tire dressing (ID: 38124, 1 Gallon) How to use the 3M™ engine and tire dressing on tires:

1. Spray a thin, uniform coating of dressing concentrate directly onto the tires and allow to dry.
2. Remove overspray from the wheels, hubcaps or painted surfaces using a clean, soft, dry terry cloth towel (figure 1).



Figure 1: Remove excessive residue

Note: Remove excessive residue from painted surfaces directly after applying it on to the tires. Doing so will prevent for possible damage to painted surfaces (see Figure 2).

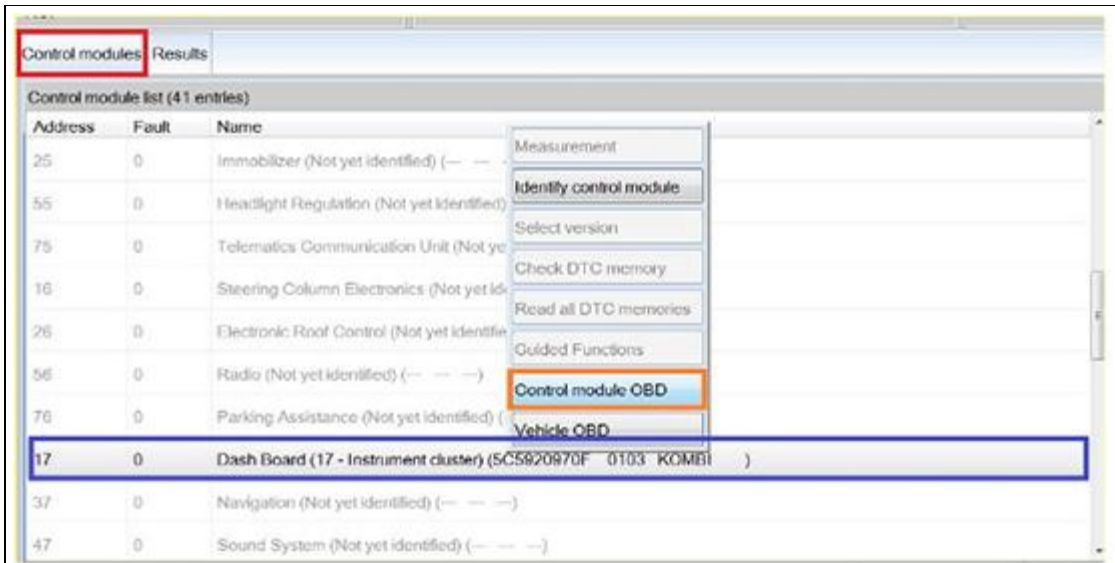


Figure 2. Paint damage due to slinging tire dressing residue.

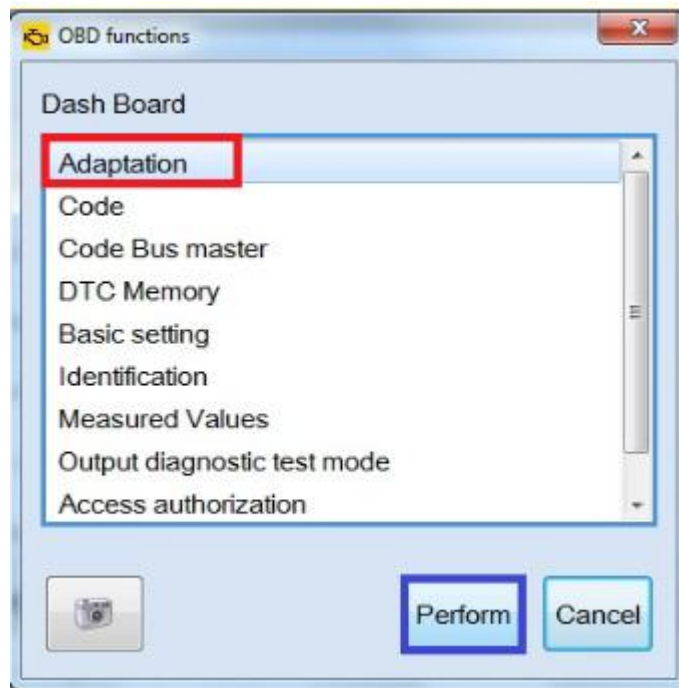
**90-13-02 Resetting Inspection Service and Interval Service
June 6, 2014: Update to Information**

Model(s)	Year	Eng.Code	Trans.Code
Touareg	2010–2014	All	All
Passat	2012–2014	All	All
Jetta	2011–2014	All	All

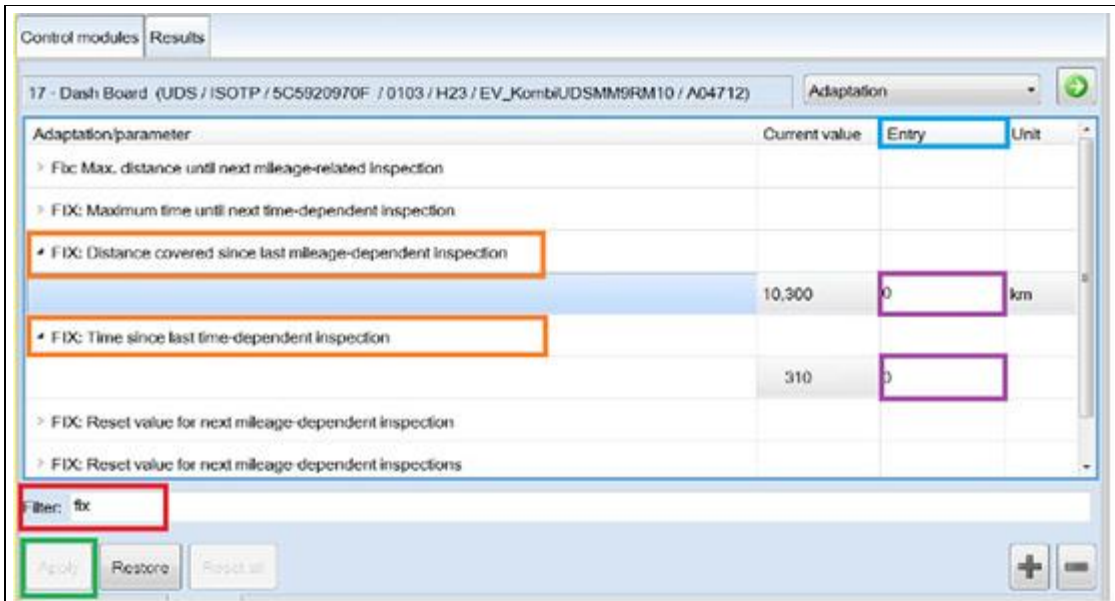
Under the "Control Module" tab, right click on address word "[17 Dash Board](#)".
Open "Control module OBD".



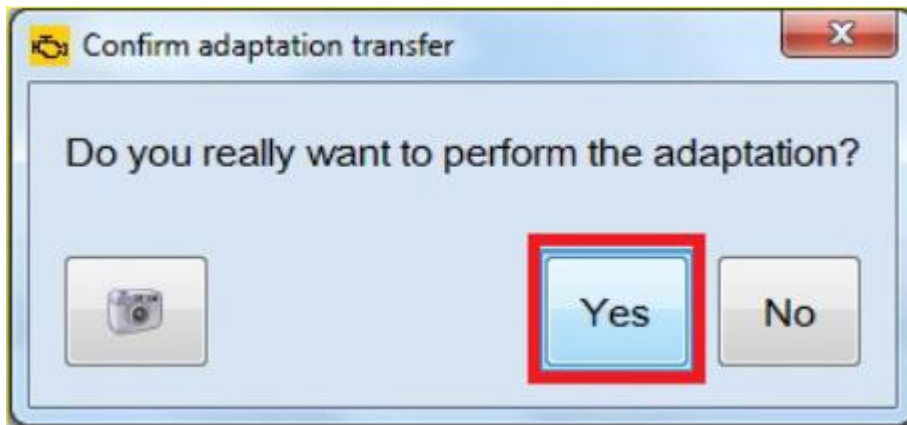
Click "Adaptation". Then click the "Perform" button.



In the "Filter" box, type "fix". This will reduce the selections to choose from. Find and double click on "FIX: Distance covered since last mileage - dependent inspection" and "FIX: Time since last time - dependent inspecting". Under the "Entry" header, click the box next to the current value and set the entry to "0" for both adaptations. After changing values to "0", you may need to click out of the entry box to have the "Apply" button light up. Click "Apply".



There should be at least one POP up window. Click the "Yes" button.



Confirm the

"Current value" has saved to "0".

96-14-04 Interior Light Assembly Rattle Noise

Model(s)	Year	Eng.Code	Trans.Code
Beetle Convertible	2013-2014	All	All

For concerns of rattle noise from the interior light assembly, the issue can be corrected with self - adhesive felt from the squeak and rattle kit or by using part number 533 - 863 - 288 - A (Felt Strip) from ETKA. Cut the felt strip to 5mm x 30mm and place it in the left rear corner of the interior light assembly housing, see figure 1 below. For best results use felt strip that is 1.5mm – 3mm thick.



Campaigns

No new campaigns this week.

Updates

No new updates this week.

Suggestions

Please send comments or suggestions to: woa.workshopinformation@vw.com

[Back to top](#)

© 2014 Volkswagen of America, Inc. All rights reserved. Information contained in this document is based on the latest information available at the time of printing and is subject to the copyright and other intellectual property rights of Volkswagen of America, Inc., its affiliated companies and its licensors. All rights are reserved to make changes at any time without notice. No part of this document may be reproduced, stored in a retrieval system, or transmitted in any form or by any means, electronic, mechanical, photocopying, recording, or otherwise, nor may these materials be modified or reposted to other sites, without the prior expressed written permission of the publisher.