



Instructions Specifically Developed for Installation by Dealer Technicians

Description:	Tiguan Trailer Hitch
Part Number:	5N0 092 135 Trailer Hitch Kit 5N0 055 204 N Trailer Hitch Electrical Kit 5N0 092 730 Trailer Hitch Ball Kit
Fitment:	TIGUAN 2008+
Quantity:	1 each
Supplier:	Volkswagen Genuine Accessories
Publish Date:	February 20, 2014

Note:

- Before starting, make sure painted and trim surfaces are protected to avoid scratching during installation process of the items. Use proper surface protection covers and work attire that are free of dirt and grease.
- The following procedure shows the work steps on a sample vehicle. They should be carried out similarly on all vehicles.
- The work to be performed described in these fitting instructions may change due to model servicing schedules. For example, changes to the wiring colors or even fitting sites should not be discounted. For this reason always consult the relevant up-to-date wiring diagram or the current vehicle repair manual.



WARNING:

Read entire instructions thoroughly before starting

Improper installation procedures can cause serious personal injury.

- Installation should be performed only by a qualified technician.
- Read all instructions thoroughly before starting.
- Observe all safety precautions when working under a vehicle.
- Beware of sharp edges.
- Always wear safety glasses to help protect eyes.
- Always wear protective gear as gloves and use caution when using hand tools. Read entire instructions thoroughly before starting.

Hitch Components

© 2008 Volkswagen of America, Inc. All rights reserved. Information contained in this document is based on the latest information available at the time of printing and is subject to the copyright and other intellectual property rights of Volkswagen of America, Inc., its affiliated companies and its licensors. All rights are reserved to make changes at any time without notice. No part of this document may be reproduced, stored in a retrieval system, or transmitted in any form or by any means, electronic, mechanical, photocopy, recording or otherwise, nor may these materials be modified or reposted to other internet sites, without the expressed written permission of the publisher.



5N0 092 135 – Trailer Hitch Kit



5N0 055 204 N – Trailer Hitch Electrical Kit



5N0 092 730 – Trailer Hitch Ball Kit

Tools Required for Installation



Protected Blade



Ratchet



T25/T20 Torx Bit



Ratchet Extension



10mm Socket



17mm Socket



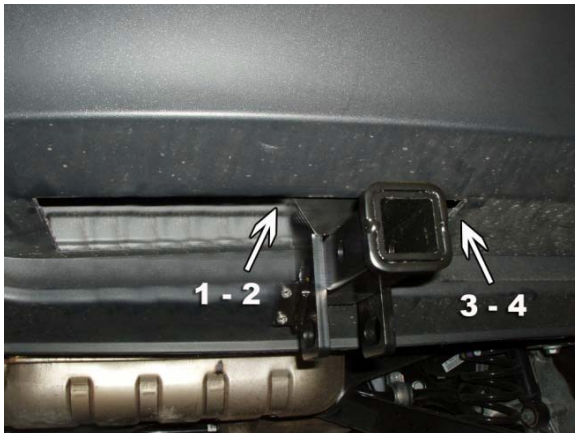
Step #01 Use a closed blade to cut and remove the access panel from the bottom side of the bumper cover.

!NOTE:

The access panel is indicated by recessed panel on the bottom side of the bumper cover



Step #02 Remove the lock clip from the trailer harness and remove the harness from the bracket. To remove the harness, simply depress the retaining clip (after the locking clip has been removed) and pull the harness from the bracket.



Step #03 Use the (4) four supplied bolts to mount the hitch onto the bumper inside the bumper cover.

!NOTE:

Torque bolts to 65.0 Nm



Step #04 Use the supplied screws to mount the 7 pin connector to the mounting bracket and plug the wiring harness into the 7 pin connector.

!NOTE:

Torque bolts to 2.0 Nm



Step #05 Use the two (2) supplied bolts to mount the bracket to the location on the side of the hitch assembly.

! NOTE:

Torque bolts to 3.0 Nm



Step #06 Open the rear of the vehicle and remove the floor panel, spare tire and storage foam.



Step #07 Remove the driver side access panel, jack and tool kit.



Step #08 Use a T20 torx bit and remove the two screws in the threshold cover. Remove the cover.



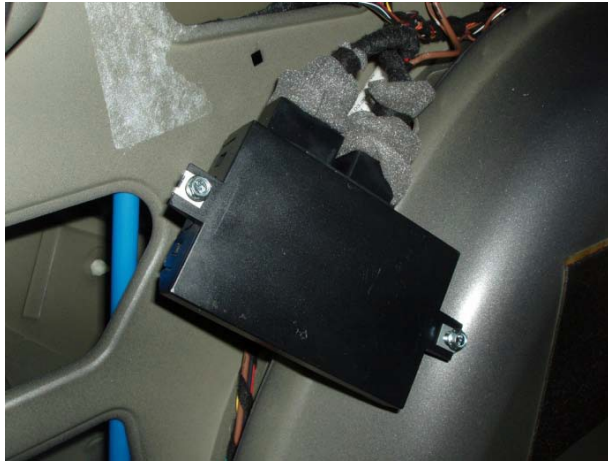
Step #09 Use a T20 torx bit to remove the three screws in the side wall. Carefully pull the side wall outward to gain access behind it.

!NOTE:

Be careful not to pull the wall out far enough to damage the remaining portion that is bolted in place



Step #10 Use a T20 torx bit to remove the four screws in the jack container. Remove the jack container from the wall.



Step #11 Slide the speed clips on both tabs of the control module. Start the supplied bolts into the speed clips on the tabs of the module. Reach into the opening to locate the harness. Plug the harness into the control module.



Step #12 Place the module inside of the quarter panel and slide the bolts into the two slots on the quarter panel. Tighten the bolts. Replace the jack container, side wall, threshold cover, storage foam, spare tire and floor panel.

!NOTE:

Torque bolts to 3.0 Nm



Step #13 Locate the trailer y-harness under the driver side dash. Roll the connector foam back to expose the connectors. Disconnect the black clip from the black retainer.



Step #14 Plug the black clip into the black retainer on the supplied y-harness, and the blue clip into the blue retainer. Plug the clip on the other end of the harness into the black retainer (from step #13).



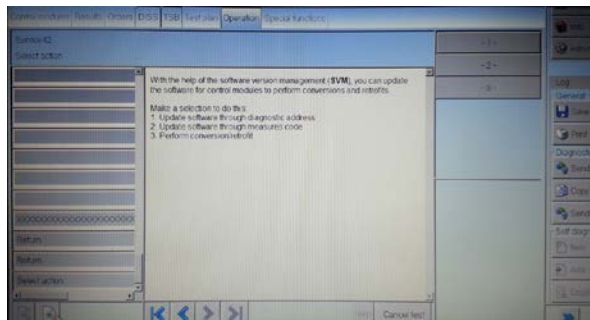
Step #15 Roll the connector foam down to cover the connection and place the wire back up under the dash.

!NOTE:

It may be necessary to use a wire tie to secure the harness under the dash



Step #16 Place the tongue/ball piece into the hitch receiver and place the retaining pin through the hole in the hitch and the locking pin into the other side of the retaining pin.



Step #17 Use ODIS to perform Software version management. Select option #3 Perform conversion/retrofit. Enter unit code 39AAC.

