

Technical Bulletin

Model(s)	Year	Eng. Code	Trans. Code	VIN Range From	VIN Range To
Passat Wagon	2006 – 2010	All	All	All	All

Condition

55 14 11 December 16, 2014 2039197

Corrosion On Rear Lid Around Rear Lights



Figure 1: Example: rear lid when rear light is installed



Figure 2: Example: rear lid when rear light is removed

! **Note:**

To determine if this procedure is covered under Warranty, always refer to *the Warranty Policies and Procedures Manual*.

Documentation required per *Warranty Policies and Procedures Manual*.

For vehicles outside of the Limited Warranty Against Corrosion Perforation this Technical Bulletin is for information only.

Technical Bulletin

Technical Background

The surface area of the rear lid becomes chafed from movements between the components.

Dirt between the rear lid surface and rear lights can cause paint damage (Figure 3).

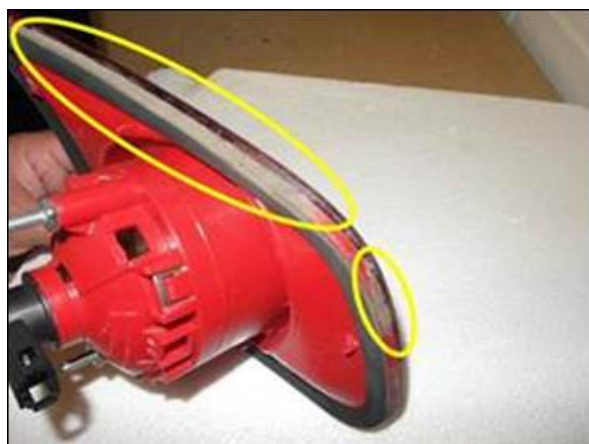


Figure 3 Dirt on rear lights

Production Solution

Corrections in the production process after discovering deviations.

Technical Bulletin

Service

Repair the rear lid (remove corrosion/restore paint structure).

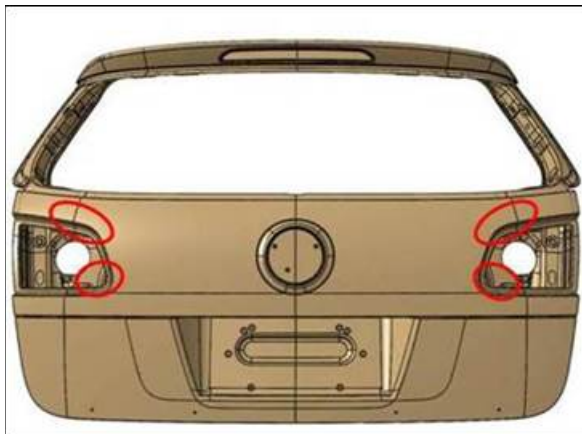


Note:

This repair procedure should be performed on both sides of the rear lid.

- Remove the rear lights according to the repair manual. See Repair Group 94 in Elsa.
- Remove the necessary add-on parts from the rear lid according to the repair manual. See Repair Group 70 in Elsa.
- Remove the corrosion with pneumatic brush grinder.
- Re-paint the rear lid according to Volkswagen guidelines.

Stick anti-chafing foils on the contact surfaces of the rear lights



Before installing the rear lights stick anti-chafing foils on the contact surfaces in the rear lid (bottom and top, Figure 4).

Figure 4 (contact surfaces in rear lid)

Technical Bulletin

Cut out the anti-chafing foils per side from the part number: AKL 448 030 05 (Figure 5, red arrows)

- For top area: 1 x 7 cm long, 2 x 3 cm long, 1 x 4 cm long.
- For bottom area: 1 x 2 cm long, 2 x 3 cm long.
- Thoroughly clean the contact surface of the rear lights in the rear lid with silicon remover
- Stick on the cut-out foils (illustration 5, red arrows).

! **Note:**

When applying the anti-chafing foil make sure that the edge to the outside is equal and is covered by the rear lights.

- Install all removed parts according to the repair manual. See Repair Group 70 and 94 in Elsa.

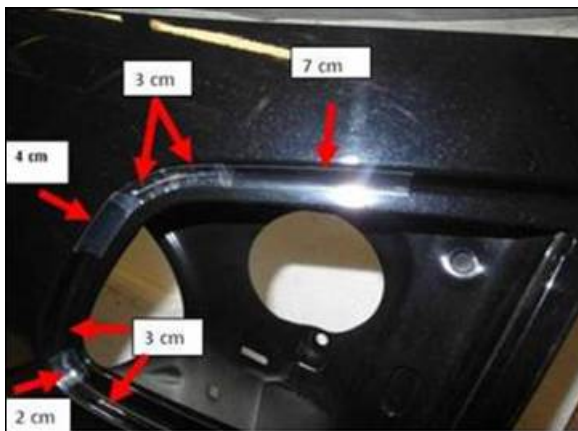


Figure 5 Foil installation on right lift gate tail light surface.



Technical Bulletin

Warranty

Note:

- Dealers may complete the repair as described without prior authorization (through a WISE Warranty Repair Acceptance request).
- Documentation required: Clear pictures, completed estimate and body shop invoice must be saved and kept on file at the Dealership for audit purposes.
- Labor time units (TU), Material units (MU), and Material unit rate are correct at the time of publication. The time units and/or material units may differ if the repair catalogue is updated. The information in the repair catalogue applies, except for the open time items (labor operations ending in 99) which are calculated at actual time multiplied by the body shop labor rate. The material allowance (Paint material price per unit) is subject to change. Refer to **WISE > Resource Center > Forms > Paint/Corrosion for the most current forms.**
- This section is applicable for vehicles within the terms of Volkswagen's Limited Warranty Against Corrosion Perforation. For vehicles outside the terms of the Limited Warranty Against Corrosion Perforation this section is for information only.
- This bulletin may be provided to outside shops to ensure the proper repair is completed.

Note:

Claim Processing Options

Option 1: Utilize the attached form examples and interactive forms on WISE to assist with calculating the reimbursement amounts. **This will expedite the claim review process and reduce the time to pay the claim.**

Note that miscalculations are subject to claim adjustment.

For the complete set of pre-populated Paint/Corrosion Claim Form templates associated with this Technical Bulletin, refer to WISE > Resource Center > Forms > Paint/Corrosion.

Option 2: Email repair estimates to paintcamp@vw.com. The Paint and Corrosion Team will calculate the warranty allowance and complete the required form(s) on behalf of the dealer.



Technical Bulletin

To determine if this procedure is covered under Warranty, always refer to the <i>Warranty Policies and Procedures Manual</i> ¹⁾					
Model(s)	Year(s)	Eng. Code(s)	Trans. Code(s)	VIN Range From	VIN Range To
Passat Wagon	2006-2010	All	All	All	All
SAGA Coding					
Claim Type:	160 ¹⁾				
Service Number:	Damage Code	HST		Damage Location (Depends on Service No.)	
5559	0003	--		030	
Parts Manufacturer	Passat (3C5)			030 ²⁾	
Repair					
Please use the following part number in "Outside Materials" ⁴⁾					
LACKMATF: Paint and Materials			MU @ \$12 per unit		
Epoxy Primer (Locally Sourced)			Claim Dollar Amount (MAX: \$40)		
Please use the following Labor Operation in "Outside Labor" ⁴⁾					
Select the appropriate Labor Operation below: - L0010000: External Painting-straight color - L0020000: External Painting-metallic/2-layer - L0030000: External Painting-pearl color			Claim Dollar Amount		
Use this for all body repair in this bulletin: - A0041000: Body Shop repair no paint			Claim Dollar Amount		
Causal Part:			L00#0000		
Diagnostic Time ⁴⁾					
GFF Time expenditure	01500000 = 00 TU max.			NO	
Road Test	01210002 = 00 TU			NO	



Technical Bulletin

	01210004 = 00 TU	
Technical Diagnosis	01320000 = 00 TU	NO
Claim Comment: Input "As per Technical Bulletin 2039197" in comment section of Warranty Claim.		
<p>¹⁾ For Vehicles outside the Limited Warranty Against Corrosion Perforation this bulletin is information only</p> <p>²⁾ Corrosion claim vendor code will be the damage location.</p> <p>³⁾ Labor Time Units (TUs) are subject to change with ELSA updates.</p> <p>⁴⁾ Documentation required per <i>Warranty Policies and Procedures Manual</i>.</p> <p>⁵⁾ See attachment "srt_ref_table.pdf" for labor time reference.</p>		

Required Parts and Tools

Repair		
Part No:	Part Description	Quantity
AKL 448 030 05	Anti-Chafing Foil	0.1

No Special Tools Required.

Additional Information

All part and service references provided in this Technical Bulletin are subject to change and/or removal. Always check with your Parts Dept. and Repair Manuals for the latest information.

Paint/Corrosion Claim Form



Dealer No. **400000**
 Repair Order No. **910000**

Example - Repair

If repeat repair, provide explanation in box below:

B6 Passat

VIN (17-Digits)	3VWBA71K18M167634		
Color No. (4-digit ElsaPro Paint No.)	LR9A		
Dealer Labor Rate	100.00		
Paint material price per unit	12.00		
Dealer-owned paint shop?	<input checked="" type="radio"/>	Yes	<input checked="" type="radio"/> No
Original paint material?	<input checked="" type="radio"/>	Yes	<input checked="" type="radio"/> No

Service No.	Damage Code	Dmg Loc	Part manufacturer (Vendor Code)	Description of Repair	Paint Labor Operation(s)	Time Units	Mat'l Units
5559	0003	030	030	Paint lift gate	55598753	90	6
				Verify ALL Labor Operation Time Units and Material Units			

Note: Authorization and claim reimbursement are contingent on the usage of original parts for the repair	Body Painting Prep Time	51017173	160
The vehicle history must be checked for any previous damage. Digital photographs must be included with the repair order per VWoA instructions. If there is a sublet invoice for painting, the invoice amount must be split between outside (sublet) labor and outside (sublet) material.		Paint Subtotal	250
			6

Part Number	Part Description	Part Qty	Part Price per Unit	Total Part Price	Description of Repair	Repair/Replace Labor Operation(s)	Time Units
EPOXY	Epoxy Primer	1	\$ 40.00		Remove and install 2 rear lights	94292020	30
					Remove and install rear lock mechanism	55571960	10
					Remove and install rear lid trim	70921900	30
					Remove and install rear emblem	66511900	20
					Remove and install rear letterings	66501900	20
					Repair lift gate	55596300	20
					Bond anti chafing foil	55594999	20
					Replace trim strip	66025500	30
					Wax body	51017500	30
					Cover up rear window	64867750	30
				Outside Material Part Amount Subtotal	\$ 40.00	Body Labor Subtotal	240
				LACKMATF Total Paint Material Amount	\$ 72.00	Total TU/MU	490
				Total Parts Amount	\$ 112.00		6

Example Part Qty and Part Price per Unit only
 All other parts should be claimed separately in the SAGA claim

Full pre-populated forms can be found in the following location:
WISE > Resource Center > Forms > Paint/Corrosion > TB# - Form specific to the vehicle and the repair.

VW Representative Authorization No. **TB 2039197**

Authorization Date _____
 Authorization valid until: _____

L00#0000	\$ 250.00
A0041000	\$ 240.00
Parts and Materials:	\$ 112.00
Total:	\$ 602.00

Warranty
 VW Representative Name (printed) _____

Warranty
 VW Representative Signature _____

SRT Reference Table for TPI# 2039197

Repair (B6 Passat Wagon/Variant) – Models(3C5)		
<u>Body Labor</u>		
Labor Operation : Cover Up Rear Window	64 86 77 50 = 30 TU	Multiply claim time units x warranty labor rate. Enter in SAGA under Outside Labor Operation: A0041000
Labor Operation : Remove and install 2 rear lights	94 31 20 20 = 30 TU	
Labor Operation : Remove and install rear lock mechanism	55 57 19 60 = 10 TU	
Labor Operation : Remove and install rear lid trim	70 92 19 00 = 30 TU	
Labor Operation : Remove and install rear emblem	66 51 19 00 = 20 TU	
Labor Operation : Remove and install rear letterings	66 50 19 00 = 20 TU	
Labor Operation : Wax body	51 01 75 00 = 30 TU	
Labor Operation : Repair Boot Lid	55 59 63 00 = 20 TU	
Labor Operation : Bond Anti Chafing foil	55 59 49 99 = 20 TU	
Labor Operation : Replace Trim Strip	66 02 55 00 = 30 TU	
<u>Refinish Labor</u>		
Labor Operation: Prepare painting	51 01 71 73 = 160 TU	Multiply claim time units x warranty labor rate. Enter in SAGA under Outside Labor Operation: L00#0000* *Please see warranty table for proper labor operation
Labor Operation: Paint lift gate	55 59 87 53 = 90 TU	
<u>Outside Materials</u>		
Labor Operation: Paint tail gate	6 MU	Multiply claim material units x \$12.00. Enter in SAGA under Outside Materials: LACKMATF

* Rear lid replacement should be considered if the total repair cost will exceed 80% of the total replacement cost.

Refer to the Reimbursement Policy section of the *Warranty Policies and Procedure Manual*. This section provides important guidelines when considering component repair vs. replacement options (the “ 80% rule”).