

ATTENTION:

- GENERAL MANAGER
- PARTS MANAGER
- CLAIMS PERSONNEL
- SERVICE MANAGER

IMPORTANT - All Service Personnel Should Read and Initial in the boxes provided, right.



QUALITY DRIVEN® SERVICE

SERVICE BULLETIN

APPLICABILITY: All Models Equipped with a CD Changer/Player or Navigation System/CD Audio Unit **NUMBER:** 15-120-07R
DATE: 03/07/07
SUBJECT: Compact Disc Precautions **REVISED:** 02/11/14

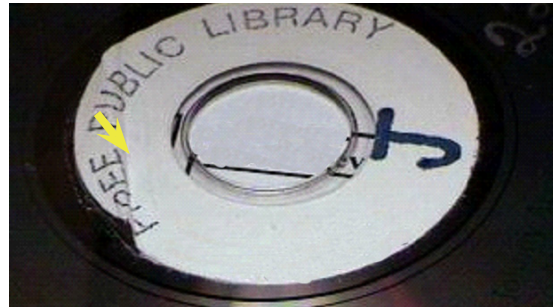
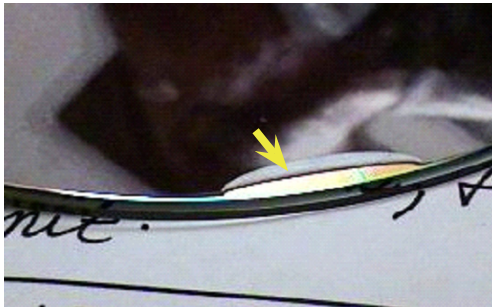
INTRODUCTION

This bulletin provides precautions concerning compact discs. There has been an increasing number of CD-equipped audio units being replaced under warranty. A significant number of the failures result from using damaged CDs, non-compatible user-created CDs with stick-on labels and in some cases, multiple CDs inserted at the same time jamming the mechanism. The resultant damage to the unit is generally not detected until after the audio exchange has been completed and the returned component inspected.

NOTE: Customers reporting CD-related issues should be reminded at the time of the unit exchange that the use of non-compatible CDs as described in this bulletin is a potential cause of their concern. In addition, damage of CD-equipped audio units resulting from the use of compact discs as described in this bulletin is not a matter for warranty.

We encourage you to make a copy of page 3 of this bulletin and provide it to your customers when an exchange unit is installed.

EXAMPLES OF PEELING LABELS



Continued...

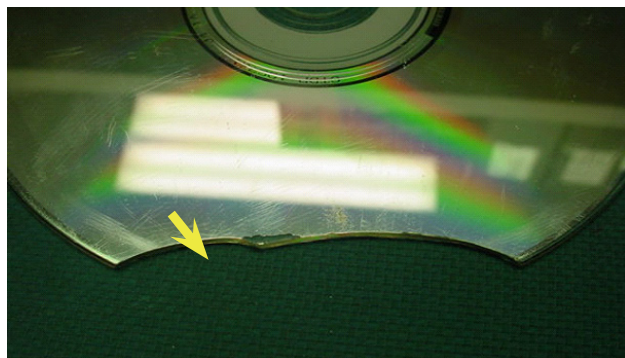
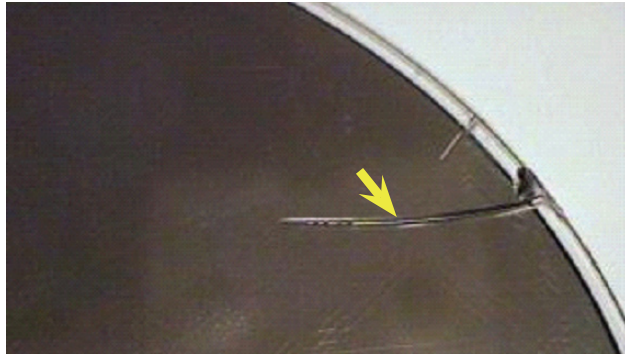
CAUTION: VEHICLE SERVICING PERFORMED BY UNTRAINED PERSONS COULD RESULT IN SERIOUS INJURY TO THOSE PERSONS OR TO OTHERS.

Subaru Service Bulletins are intended for use by professional technicians ONLY. They are written to inform those technicians of conditions that may occur in some vehicles, or to provide information that could assist in the proper servicing of the vehicle. Properly trained technicians have the equipment, tools, safety instructions, and know-how to do the job correctly and safely. If a condition is described, DO NOT assume that this Service Bulletin applies to your vehicle, or that your vehicle will have that condition.

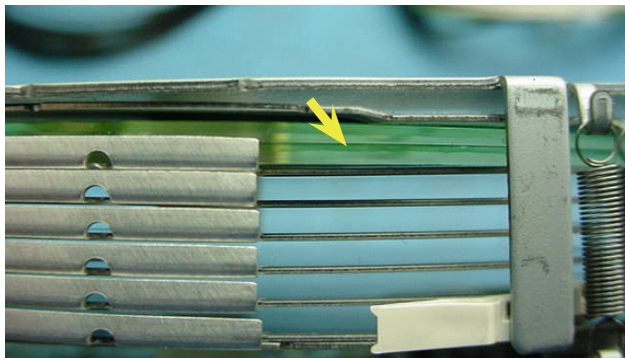
SUBARU OF AMERICA, INC. IS "ISO 14001 COMPLIANT"

The international standard for excellence in Environmental Management Systems. Please recycle or dispose of automotive products in a manner that is friendly to our environment and in accordance with all local, state and federal laws and regulations.

EXAMPLES OF BROKEN/CRACKED DISCS



EXAMPLE OF DOUBLE-DISC INSERTION



EXAMPLE OF ODD-SHAPED DISC



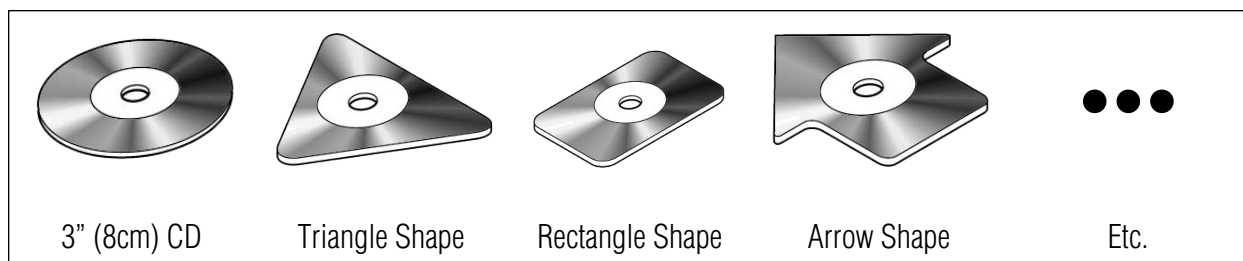
Continued...

In-dash compact disc (CD) players are a great way to enjoy crystal-clear music in your Subaru. Subaru CD players are designed to play standard 4 3/4 inch diameter CDs, which carry the “Compact Disc Digital Audio” logo.

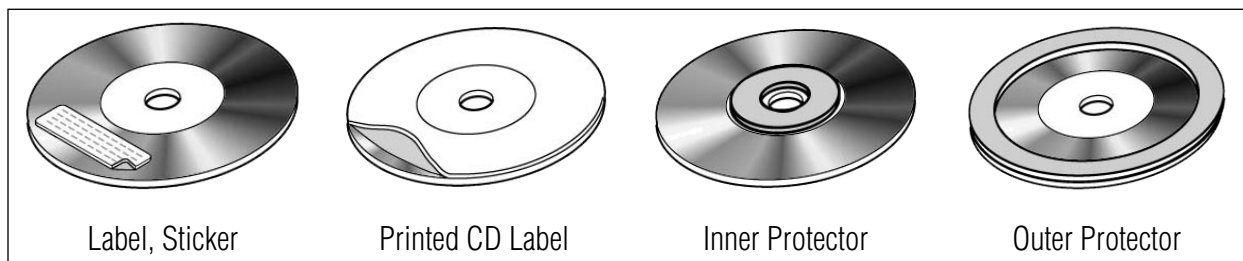


The following CDs may cause problems when loading, playing, or ejecting due to the complexity of your CD player’s internal mechanisms.

1. Small size, irregularly shaped discs.



2. Excessively thick discs.



3. Damaged Discs

4. Poor quality discs.

