

A PDF of this newsletter and previous ones can be found by logging in to ServiceNet and clicking on the [Elsa Newsletter](#) section in the Technician References menu.

VW Elsa Newsletter



Das Auto.

Edition 99: August 18, 2014

Content

- [Technical Bulletins](#)
- [Pending Service Solutions](#)
- [Tech Tips](#)
- [Campaigns](#)
- [Updates](#)
- [Suggestions](#)



Technical Bulletins

30 14 03 - 2028714 Supersedes T. B. V301401 dated February 6, 2014 to update warranty table service number.

Tip: This Technical Bulletin is for fault code P2711 ONLY, if any other faults appear with this code, perform normal GFF processes and diagnoses.

Model(s)	Year	All	Trans. Code	VIN Range From	VIN Range To
A5 Jetta Wagon, A5 Golf	2009	All	DSG (02E)	All	All
A5 Jetta Wagon	2009-2010	All	DSG (02E)	All	All
A6 Jetta SportWagen, Golf Wagon	2010-2012	All	DSG (02E)	All	All
A6 Jetta SportWagen,	2009-2012	All	DSG (02E)	All	All

Golf Wagon					
Passat	2012	All	DSG (02E)	All	All

DTC as described may cause shifting concerns and/or a lack of mobility upon initial startup. For example, the selector is moved to Drive or Reverse and the transmission does not engage the selected gear.

Production Solution: Updated clutch installed as of March 12, 2010.

**91 14 06 - 2031434 Supersedes Technical Bulletin V911322 dated September 25, 2013 to update software level.
RNS 850 Radio Software Update**

Model(s)	Year	Eng. Code	Trans. Code	VIN Range From	VIN Range To
Touareg	2011–2013	All	All	All	All

Customer may report one of the following concerns:

- HD Radio does not play back in stereo (plays in mono)
 - Intermittent erratic display problems
- Displayed radio station does not match the station being played

Production Solution: Improved software.

**46 14 07 - 2033247 Supersedes Technical Bulletin V461404 dated April 15, 2014 to update the text in the "YES" answer of step 1 of Lower Control Arm Inspection.
Front Brake Judder And / Or Vibration**

Model(s)	Year	Eng. Code	Trans. Code	VIN Range From	VIN Range To
Routan	2011–2012	All	All	All	All

Vehicle owners may feel brake pedal pulsation, steering wheel shake and/or floor pan vibration.

Note: This bulletin applies to vehicles built before March 30th 2012 with PR codes 1LA – 1LB for 16 inch brake systems. Vehicles with PR 1LC have 17 inch brakes and are not applicable to this technical bulletin.

Production Solution: New improved brake pads and lower control arms introduced March 30, 2012.

Pending Service Solutions

No new Pending Service Solutions this week.

[Back to top](#)

Tech Tips

66-14-01 Replacing the Side Spoilers (Flaps) 2015 GTI

Model(s)	Year	Eng.Code	Trans.Code
GTI	2015	All	All



Required Parts:	Part number:	Alternative "("")
Spoiler (left)	5G6 805 945 C 041	
Spoiler (right)	5G6 805 946 C 041	
Cleaning solution	D 009 401 04 *	3M 38983 general purpose adhesive remover
Glass Primer	D 177 500 A1 **	3M 06396 adhesion promoter

Note: This document shows how to replace the spoiler (flap) on one side only; we recommend replacing the spoilers on both sides.

1. Remove the spoilers (flaps) following the steps in the ELSA repair manual: **Body → 66 Exterior equipment → Spoiler → Removing and installing side spoiler.**
2. Remove the (tape) residue from the windshield and clean it thoroughly with **cleaning solution D 009.401.04***.
3. Using a dry microfiber cloth, wipe the window dry and wait **5 minutes** before proceeding with the next step.
4. Apply **one** layer of glass primer (**D 177.500.A1****), apply the primer in **one direction** only (Figure 1 and 2).

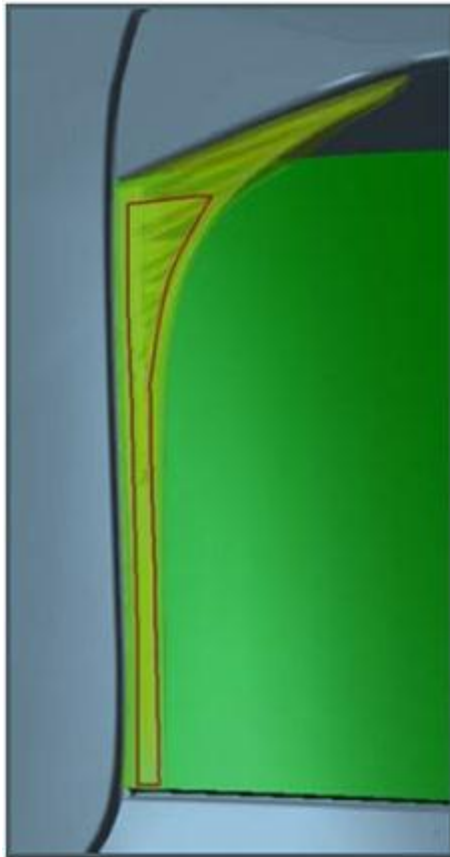


Figure 1: Primed area in yellow

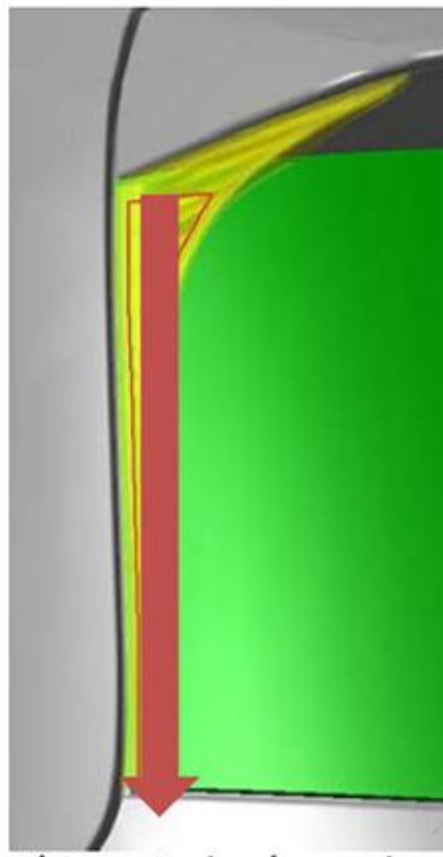


Figure 2: Apply primer and wipe in one direction

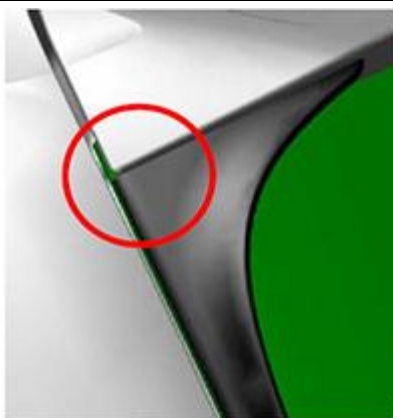
5. Directly after applying the primer, use a microfiber cloth to wipe off the primed surface in one swipe as shown in Figure 2 (**wipe in one direction only**).
6. Again wait **5 minutes** before proceeding to the next step.

* Alternatively use 3M 38983 general purpose adhesive remover or other VOC-compliant alternative, as regulated by your local VOC restrictions

** Alternatively use 3M 06396 adhesion promoter or other VOC-compliant alternative, as regulated by your local VOC restrictions

→ **(only use an alternative for this product if the recommended product is restricted in your area)**

7. Remove the protective film from the **upper part** of the flap and install the flap by aligning it to the **edge of the rear spoiler** as shown in Figure 3.



8. Remove the protective film from the **long side** of the flap and Install the flap to the window glass by aligning the **lower side of the flap with the edge of the window glass** as shown in Figure 4.



9. Firmly press the flap (**over the entire length**).

[Back to top](#)

Campaigns

No new campaigns this week.

Updates

No new updates this week.

Suggestions

Please send comments or suggestions to: ywoa.workshopinformation@vw.com

[Back to top](#)

© 2014 Volkswagen of America, Inc. All rights reserved. Information contained in this document is based on the latest information available at the time of printing and is subject to the copyright and other intellectual property rights of Volkswagen of America, Inc., its affiliated companies and its licensors. All rights are reserved to make changes at any time without notice. No part of this document may be reproduced, stored in a retrieval system, or transmitted in any form or by any means, electronic, mechanical, photocopying, recording, or otherwise, nor may these materials be modified or reposted to other sites, without the prior expressed written permission of the publisher.