



NUMBER: 23-029-14

GROUP: Body

DATE: October 11, 2014

This bulletin is supplied as technical information only and is not an authorization for repair. No part of this publication may be reproduced, stored in a retrieval system, or transmitted, in any form or by any means, electronic, mechanical, photocopying, or otherwise, without written permission of Chrysler Group LLC.

SUBJECT:

Front Passenger Seat High Effort To Adjust Fore/Aft

OVERVIEW:

This bulletin involves applying MOPAR grease to the contact points between the inner and outer seat tracks to reduce adjustment effort.

MODELS:

2014 (JK) Wrangler

NOTE: This bulletin applies to vehicles built on or after May 4, 2014 (MDH 0504XX) and on or before June 3, 2014 (MDH 0603XX) equipped with Two Door (sales codes 5ZS).

SYMPTOM/CONDITION:

High effort to adjust the front passenger seat in the fore/aft direction.

DIAGNOSIS:

If the customer describes the symptom, perform the Repair Procedure.

PARTS REQUIRED:

Qty.	Part No.	Description
1 (AR)	05019059AA	Oil Lubricant, Krytox Grease
1 (AR)	68136846AA	FRAME, Front Seat Cushion

NOTE: Each tube of Oil Lubricant, Krytox Grease will service approximately 10 vehicles.

REPAIR PROCEDURE:

- Adjust the passenger seat to the full forward and full rearward position. Was the effort abnormally high, more than approximately 30 lbf (13.6 Kgf)?
 - YES>>> Continue with the Repair Procedure.
 - NO>>> This Bulletin does not apply. Further diagnosis is required.
- Slide the passenger seat to the full rearward position to expose the front portion of the seat tracks.

NOTE: Target grease quantity for one track is the size of a pea. Do not leave excess lubricant accumulation on any portion of the outside of the track profile.

3. Using an applicator such as a small brush or Q-Tip (1), apply Krytox grease to the exposed front portion of both seat tracks on the inside of the track teeth as far as the applicator will reach (2) and along the outside of the track teeth (3) on both sides of the lower track profile (4) (Fig. 1) and (Fig. 2).
4. Slide the passenger seat to the full forward position to expose the rear portion of the seat tracks.
5. As previously instructed in [Step #3](#), apply Krytox grease to rear exposed portion of both seat tracks.

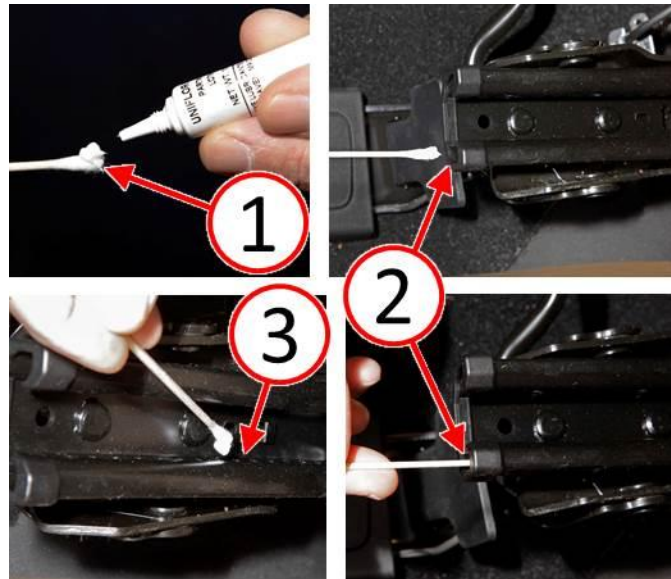


Fig. 1 Grease Application

- 1 - Place Small Quantity Of Grease On Applicator
 - 2 - Apply Grease On Inside Of Track Teeth
 - 3 - Apply Grease On Outside Of Track Teeth
-

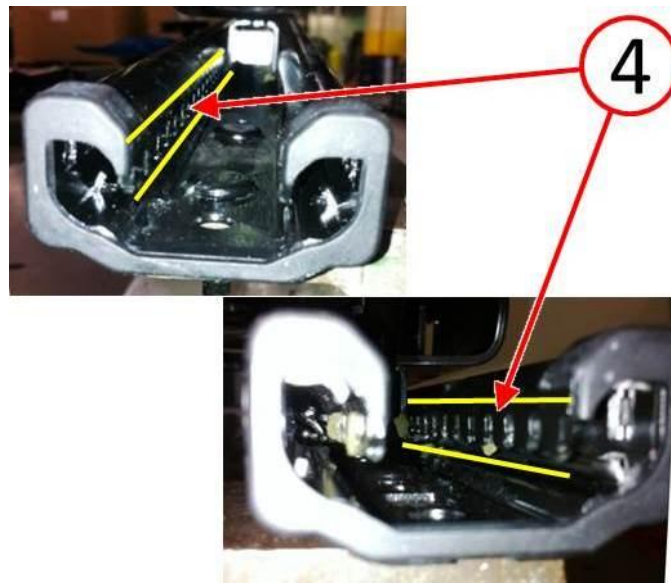


Fig. 2 Application Area

4 - Specific Grease Application Area

-
6. Cycle the seat track to the full rearward and the full forward position ten times.
 7. Adjust the passenger seat to the full forward and full rearward position. Was a smooth, easy travel noted in both directions with effort less than approximately 30 lbf (13.6 Kgf)?
 - a. YES>>> Repair is completed, return the vehicle to the customer.
 - b. NO>>> Continue to [Step #8](#).
 8. Replace the front seat cushion frame which includes the seat track. Refer to the detailed service procedures available in DealerCONNECT> TechCONNECT under: Service Info> 23 - Body> Seats> SEAT, Front> Removal/Installation and 23 - Body> Seats> COVER, Seat Cushion, Front> Removal/Installation.

POLICY:

Reimbursable within the provisions of the warranty.

TIME ALLOWANCE:

Labor Operation No:	Description	Skill Category	Amount
23-13-36-99	Inspect Front Passenger Seat Track Effort (1 - Semi-Skilled)	6 - Electrical and Body Systems	0.2 Hrs.
23-13-36-9A	Inspect and Lubricate Front Passenger Seat Track (1 - Semi-Skilled)	6 - Electrical and Body Systems	0.3 Hrs.
23-13-36-9B	Replace Front Passenger Seat Cushion Frame (1 - Semi-Skilled)	6 - Electrical and Body Systems	1.0 Hrs.

FAILURE CODE:

ZZ	Service Action
----	----------------

PART REIMBURSEMENT DETAIL:

Part No:	Description
NPN	1/10 Of Oil Lubricant, Krytox Grease

NOTE: This part number is for reimbursement only and will need to be claimed for 1/10 of Dealer Net of Part No. 05019059AA or it will be rejected.