



NUMBER: 18-054-14

GROUP: Vehicle Performance

DATE: October 08, 2014

This bulletin is supplied as technical information only and is not an authorization for repair. No part of this publication may be reproduced, stored in a retrieval system, or transmitted, in any form or by any means, electronic, mechanical, photocopying, or otherwise, without written permission of Chrysler Group LLC.

SUBJECT:

Intermittent Extended Crank, Long Crank Time.

OVERVIEW:

This bulletin involves inspecting the Bank 1 Camshaft Position Sensor serial number and if necessary, replacing the sensor.

MODELS:

2014	(DS)	Ram 1500
2014	(DX)	Ram 1500 (Mexico)
2014	(JC)	Journey
2014	(JK)	Wrangler
2014	(JS)	200/Avenger
2014	(KL)	Cherokee
2014	(LC)	Challenger
2014	(LD)	Charger
2014	(LX)	300
2014	(RT)	Town & Country/Grand Caravan
2014	(VF)	Promaster
2014	(WD)	Durango
2014	(WK)	Grand Cherokee

NOTE: This bulletin applies vehicles equipped with a 3.6L engine (sales code ERB) or 3.2L engine (sales code EHB), built on or after February 03, 2014 (MDH 0203XX) and on or before July 18, 2014 (MDH 0718XX).

SYMPTOM/CONDITION:

A small number of customers may experience an intermittent 1 to 5 second extended crank condition when starting their vehicle. No DTCs will be present when this occurs.

DIAGNOSIS:

Using a Scan Tool (wiTECH) with the appropriate Diagnostic Procedures available in TechCONNECT, verify all engine systems are functioning as designed. If DTCs are present, record them on the repair order and repair as necessary before proceeding further with this bulletin.

PARTS REQUIRED:

Qty.	Part No.	Description	Engine Application
1 (AR)	05149141AF	Sensor, Camshaft Position - Bank 1	3.2L EHB 3.6L ERB

REPAIR PROCEDURE:

1. Open the hood and remove the engine cover.
2. Locate the Bank 1 Camshaft Position Sensor located in the top rear of the valve cover. See (Fig. 1).



Fig. 1 Camshaft Position Sensor Location

1 - Camshaft Position Sensor

3. Inspect and record the serial number stamped on the top of the sensor. See (Fig. 2).

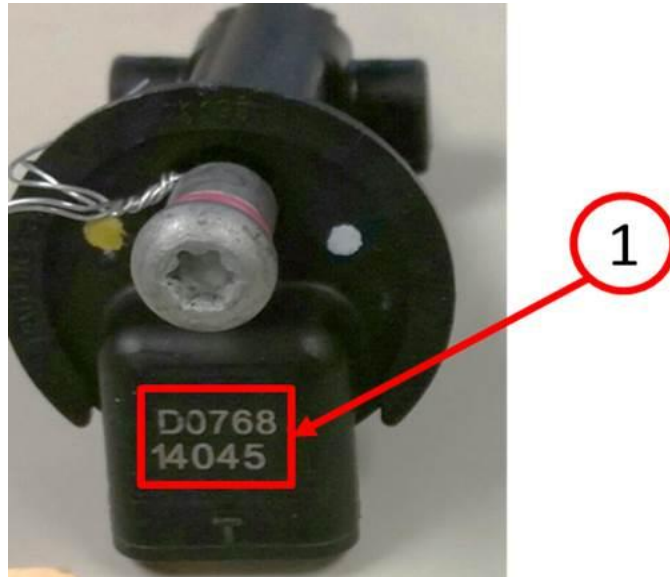


Fig. 2 Camshaft Position Sensor

1 - Camshaft Position Sensor Serial Number

4. Does the serial number begin with the letter "D"?
 - a. Yes>>> Replace the camshaft position sensor per published service procedures in Tech Connect Service Information Section 08 - Electrical>8I - Ignition Control>Sensor, Camshaft Position>Removal/Installation, and proceed to .
 - b. No>>> This bulletin does not apply. Further diagnostics are required.
5. Using WiTECH perform the Cam/Crank Variation Relearn procedure and follow the on screen instructions.
6. The bulletin is now complete.

POLICY:

Reimbursable within the provisions of the warranty.

TIME ALLOWANCE:

Labor Operation No:	Description	Skill Category	Amount
08-15-79-95	Sensor, Camshaft Position Bank 1 - Inspect (All Models) (2 - Skilled)	8 - Engine Performance	0.2 Hrs.
08-15-79-96	Sensor, Camshaft Position Bank 1 - Inspect and Replace (LC, LD, LX, WD, WK, JK Only) (2 - Skilled)	8 - Engine Performance	0.3 Hrs.
08-15-79-96	Sensor, Camshaft Position Bank 1 - Inspect and Replace (RT, KL Only) (2 - Skilled)	8 - Engine Performance	0.4 Hrs.
08-15-79-96	Sensor, Camshaft Position Bank 1 - Inspect and Replace (JS, JC, VF, DS, DX Only) (2 - Skilled)	8 - Engine Performance	0.5 Hrs.

FAILURE CODE:

ZZ	Service Action
----	----------------