



NUMBER: 08-092-14

GROUP: Electrical

DATE: October 24, 2014

This bulletin is supplied as technical information only and is not an authorization for repair. No part of this publication may be reproduced, stored in a retrieval system, or transmitted, in any form or by any means, electronic, mechanical, photocopying, or otherwise, without written permission of Chrysler Group LLC.

SUBJECT:

Electronic Pedestrian Protection System Enhancement

OVERVIEW:

This bulletin involves modifying the Electronic Pedestrian Protection System. Improved calibration for an extended range of driving condition.

MODELS:

2012 - 2013 (JC) Journey (International Only)

NOTE: This bulletin applies to vehicles built on or before July 3, 2013 (MDH 0703XX) equipped with Active Pedestrian Protection (sales code XK8).

SYMPTOM/CONDITION:

Electronic Pedestrian Protection System Enhancement to provide better behavior of the system in any type of driving condition.

DIAGNOSIS:

If the customer reports system dissatisfaction, perform the Repair Procedure.

PARTS REQUIRED:

| Qty. | Part No. | Description |
|------|------------|-------------|
| 1 | 68238432AC | Service Kit |

REPAIR PROCEDURE:

- Using a Scan Tool (wiTECH™) with the appropriate Diagnostic Procedures available in TechCONNECT, verify the presence of the DTC's B276AC-13 or/and B276B-13 set in active status under the EPP (Electronic Pedestrian Protection Module) unit. If DTC's are present record them on the repair order and repair as necessary before proceeding further with this bulletin.
- Disconnect the battery negative cable.
- Remove the front fascia. Follow the detailed procedures available in DealerCONNECT/TECHCONNECT, Refer To 13- Frame and Bumpers- Bumpers- Fascia Front- >REMOVAL.
- Un-install the Pedestrian Protection Sensor jumper harness from front bumper beam(Fig. 1). Disconnect from pedestrian protection bumper mounted acceleration sensors and FEM harness.(Fig. 2).

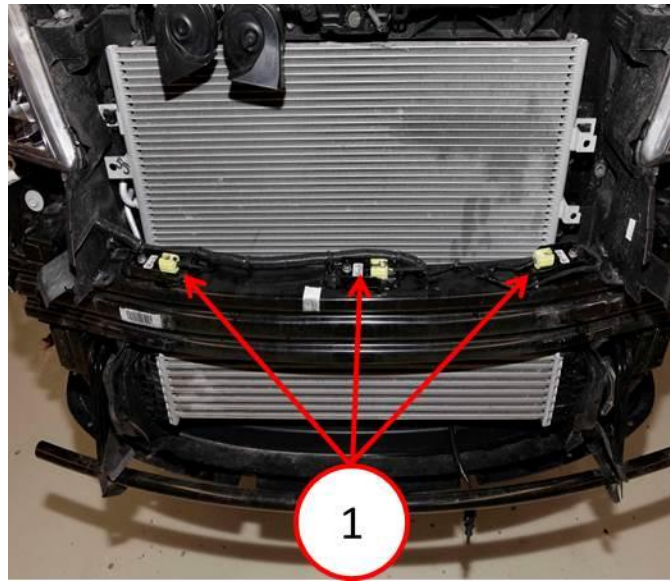


Fig. 1 Pedestrian Protection Sensor Jumper Harness

1 - 3 front bumper beam accelerometers.

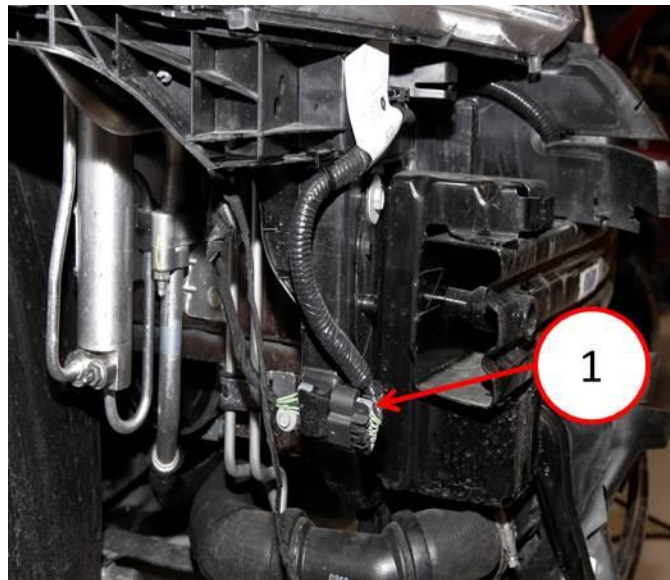


Fig. 2 FEM Harness

1 - FEM connector.

5. Install new Pedestrian Protection Sensor jumper harness. Connect the three bumper beam mounted Pedestrian Protection sensors and the FEM connector. The remaining two 4-pin connectors are for the two added sensors. They are going to be connected during fascia re-installation([Fig. 3](#)).

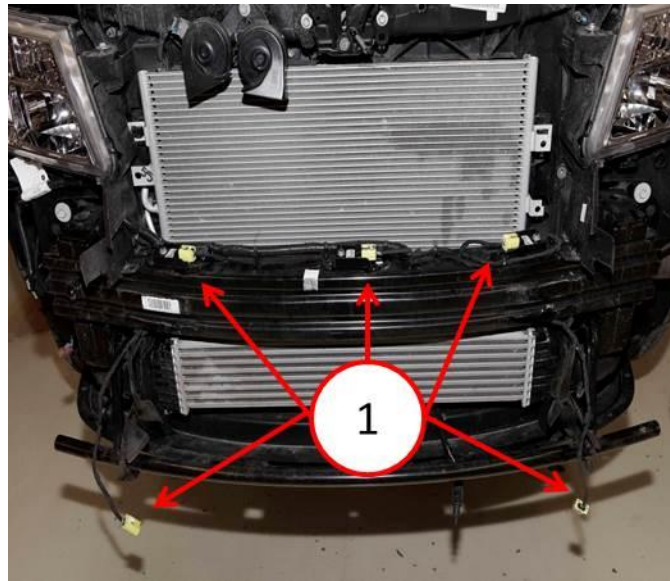


Fig. 3 New Pedestrian Protection Sensor Jumper Harness

1 - 5 sensor connectors.

-
6. Identify attachment location for left and right sensor brackets on the back side of the fascia. They are located left and right of the grill(Fig. 4).

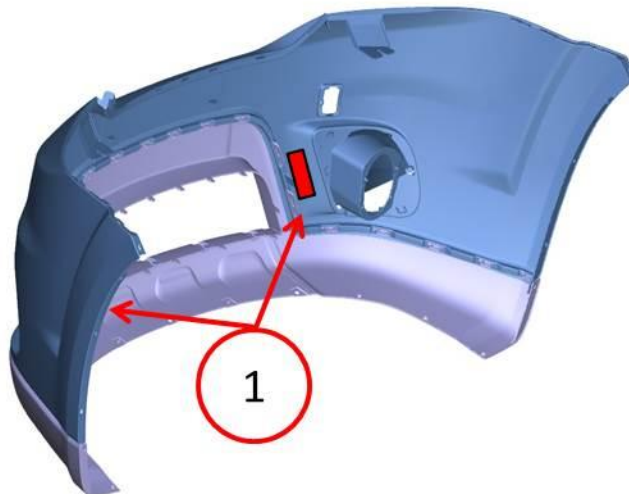


Fig. 4 Front Fascia

1 - Attachment location for left and right sensor brackets.

-
7. Clean dirt and debris from attachment areas with damp cloth.

- Use an abrasion pad or fine grit sand paper to remove paint over spray in the sensor bracket attachments areas([Fig. 5](#)).



Fig. 5 Cleaning Procedure - Abrasion Pad Application

-
- Wipe away debris and clean thoroughly with an alcohol wipe the areas.
 - Mark right and left sensor bracket locations 5 mm below reference location on fascia([Fig. 6](#)).



Fig. 6 Safety Sensor Bracket

1 - 5 mm

-
- Identify left and right sensor bracket looking the RH or LH markers([Fig. 7](#)).

NOTE: Use the LH marked bracket to install the left sensor looking the fascia from the driver prospective and the RH market bracket to install the right sensor.

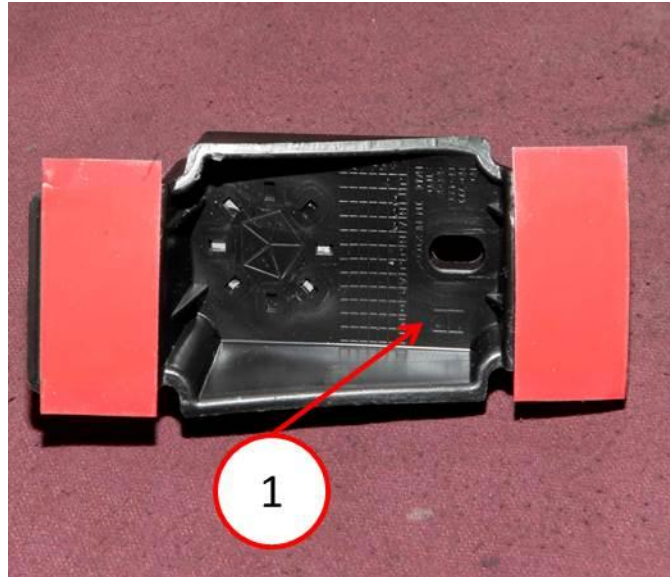


Fig. 7 Safety Sensor Bracket

1 - LH or RH marker location.

-
12. Clean the sensor bracket mounting tabs with alcohol wipe and let dry.
 13. Identify Adhesion promoter from the service kit. Apply a thin layer of adhesion promoter to the back of each sensor bracket mounting tabs (both left and right brackets)([Fig. 8](#)).



Fig. 8 Adhesive Promoter Application

-
14. Apply a thin layer of adhesion promoter to the prepared mounting surfaces on the back side of the fascia (both left and right mounting surfaces)([Fig. 9](#)).



Fig. 9 Adhesion Promoter Application

-
15. Allow at least 30 seconds for adhesive promoter to dry.
16. Identify pad containing four pieces of two sided tape from the service kit.
17. Carefully apply the tape pieces to each of the sensor bracket mounting tabs. Centering each piece to cover the entire mounting tab. Do not remove the opposing protective backing from the tape pieces until ready to install brackets to the fascia([Fig. 7](#)) and ([Fig. 10](#)).

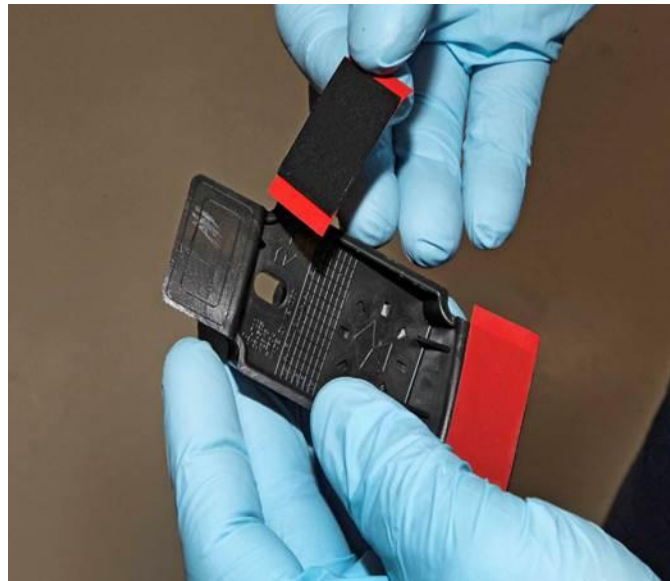


Fig. 10 Tape Application

-
18. Using pull tab, remove protective backing from tape on the right sensor bracket tabs.
 19. Orientate sensor bracket with fastening bolt up relative to top of fascia (Fig. 11).
 20. Align the bottom sensor mounting tab with the location marker. Align sensor bracket vertically with the edge of fascia and firmly press into place (Fig. 11) and (Fig. 12). The bolt on the bracket is toward the top of the fascia, toward the foam.

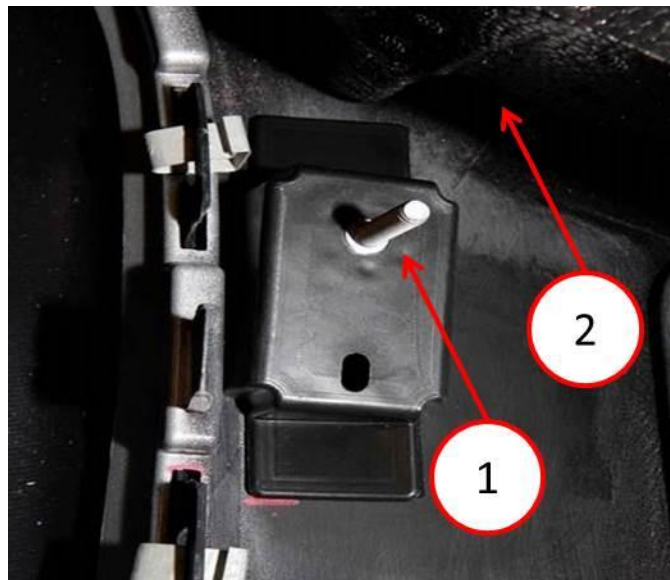


Fig. 11 Right Bracket Correct Installation

- 1 - Fastening Bolt
 - 2 - Foam Material
-



Fig. 12 Bracket Installation

-
21. Repeat steps [Step #18](#), [Step #19](#), [Step #20](#) for the left sensor bracket.
 22. Fasten sensors to each brackets using supplied nuts. Torque to 5+/- 0.5 Nm ([Fig. 13](#)).



Fig. 13 Safety Sensor Installation

-
23. Remove the edge biters installed on the two new sensors jumper harnesses ([Fig. 14](#)). Biters are not going to be used.



Fig. 14 Edge Biter

-
24. Prior to installing the front fascia, secure the jumper harnesses to the frame using two zip ties as shown into the picture (Fig. 15) and connect the jumpers 4-pin connectors to the left and right sensors previously installed (Fig. 16).



Fig. 15 Zip Tie Clip Location

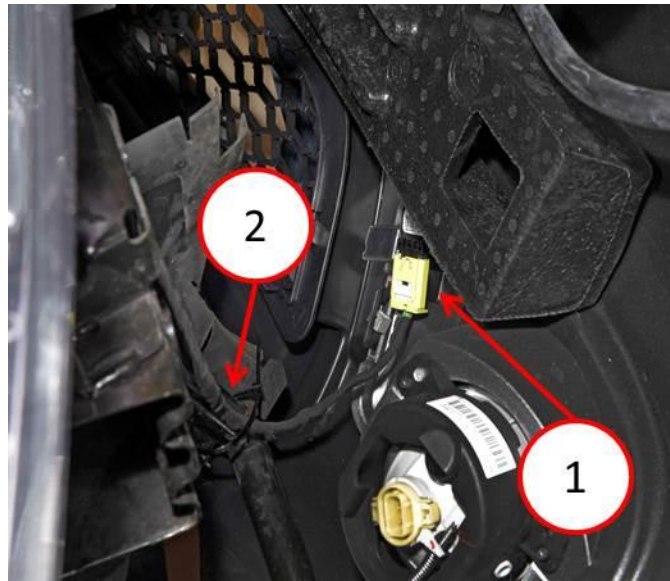


Fig. 16 Sensor Connector

- 1 - Right sensor connector
- 2 - Right zip tie location

- 25. Re-install the front fascia. Follow the detailed procedures available in DealerCONNECT/TECHCONNECT, Refer To 13- Frame and Bumpers- Bumpers- Fascia Front- >INSTALLATION.
- 26. Replace the EPPM module. Follow the detailed procedures available in DealerCONNECT/TECHCONNECT, Refer To 10- Restrains- Actuator, Electronic Pedestrian Protection Hood Hinge- >REMOVAL and INSTALLATION.
- 27. Reconnect the battery and check /clear fault codes.

POLICY:

Reimbursable within the provisions of the warranty.

TIME ALLOWANCE:

| Labor Operation No: | Description | Skill Category | Amount |
|---------------------|--|---------------------------------|----------|
| 08-45-29-90 | Service Upgrade Kit, Pedestrian Protection System, (2 - Skilled) | 6 - Electrical and Body Systems | 1.3 Hrs. |

FAILURE CODE:

| | |
|----|----------------|
| ZZ | Service Action |
|----|----------------|

FAILURE CODE:

| | |
|----|-----|
| ZZ | XXX |
|----|-----|